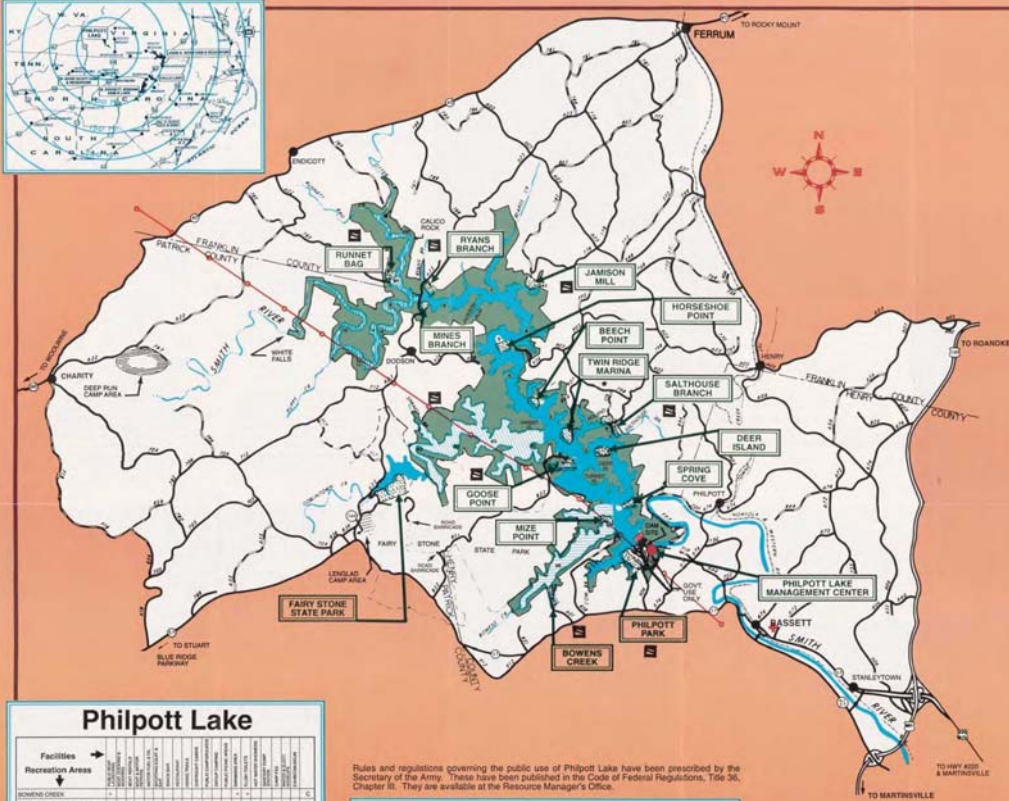
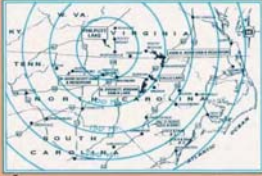


Appendix F Historic Maps of Philpott Lake



Philpott Lake

Facilities	Runnet Bag	Ryans Branch	Jamison Mill	Horseshoe Point	Mines Branch	Beech Point	Twin Ridge Marina	Salthouse Branch	Deer Island	Spring Cove	Philpott Park	Bowens Creek	Fairy Stone State Park
BOONVILLE CREEK													
FAIRY STONE STATE PARK													
BOONVILLE POINT													
HORSESHOE POINT													
PHILPOTT PARK & ENVIRONMENT													
PHILPOTT BRANCH													
SALTHOUSE BRANCH													
TWIN RIDGE MARINA, INC.													
JAMISON MILL													
SPRING COVE													
DEER ISLAND PONDING AREA													
DEER ISLAND CAMP AREA													
DEER ISLAND													
MINE BRANCH CAMP AREA													
PHILPOTT CAMP AREA													
DEER ISLAND CAMP AREA													

F ACCESSIBLE BY WATER ONLY
 F GROUP CAMPING BY RESERVATION ONLY
 A OPERATED BY OTHERS
 B OPERATED BY CONCESSIONAIRE
 C OPERATED BY CORPS OF ENGINEERS

For additional information on recreation facilities contact Resource Manager.

Rules and regulations governing the public use of Philpott Lake have been prescribed by the Secretary of the Army. These have been published in the Code of Federal Regulations, Title 36, Chapter 65. They are available at the Resource Manager's Office.

LEGEND

- U.S. Route No.
- State Route No. (Priority 2 or 3)
- Gravel Surface Road
- Project Boundary
- Normal Power Pool (SL 194-0)
- Public Recreation Areas
- Restricted Area
- 800 Launching Facilities (Showing Side of low end of Ramp)
- Waterskiing Prohibited
- Shoreline Marker (Miles from Dam)
- Commercial Boat Docks
- Rescue Squad
- High Voltage Transmission Line
- Ballways Prohibited
- Project Operation Levels

Highway Miles to Dam

Danville, VA	45
Roanoke, VA	50
Greensboro, NC	60
Winston Salem, NC	60
Wynchville, VA	80
Raleigh, NC	130
Richmond, VA	180
Norfolk, VA	240
Wilmington, NC	258



For Your Safety
RECOGNIZE & OBEY ALL BOOYS & MARKERS

U.S. ARMY CORPS OF ENGINEERS

Emergency Phone Number: 911
EMERGENCY PHONE NUMBERS ARE POSTED ON BULLETIN BOARDS IN RECREATION AREAS.

Wear Your Life Vest.

Philpott Lake

VIRGINIA

DEPARTMENT OF THE ARMY
WILMINGTON DISTRICT, CORPS OF ENGINEERS
WILMINGTON, NORTH CAROLINA

77-480-163

63122, 19 883, 1994, 3/85