



HOW CAN YOU CONTRIBUTE?



- *Welcome to the Neuse River Basin Flood Risk Management Feasibility Study Public Involvement Meeting*
- *<https://www.facebook.com/usace.wilmington>*
- Submit questions via the chat function in FACEBOOK Livestream
- Questions can also be submitted:
 - By Email: CESAW-Neuse River Basin FRM@usace.army.mil
using the subject line “Neuse River Basin Study – Scoping Comment”

- By mail:

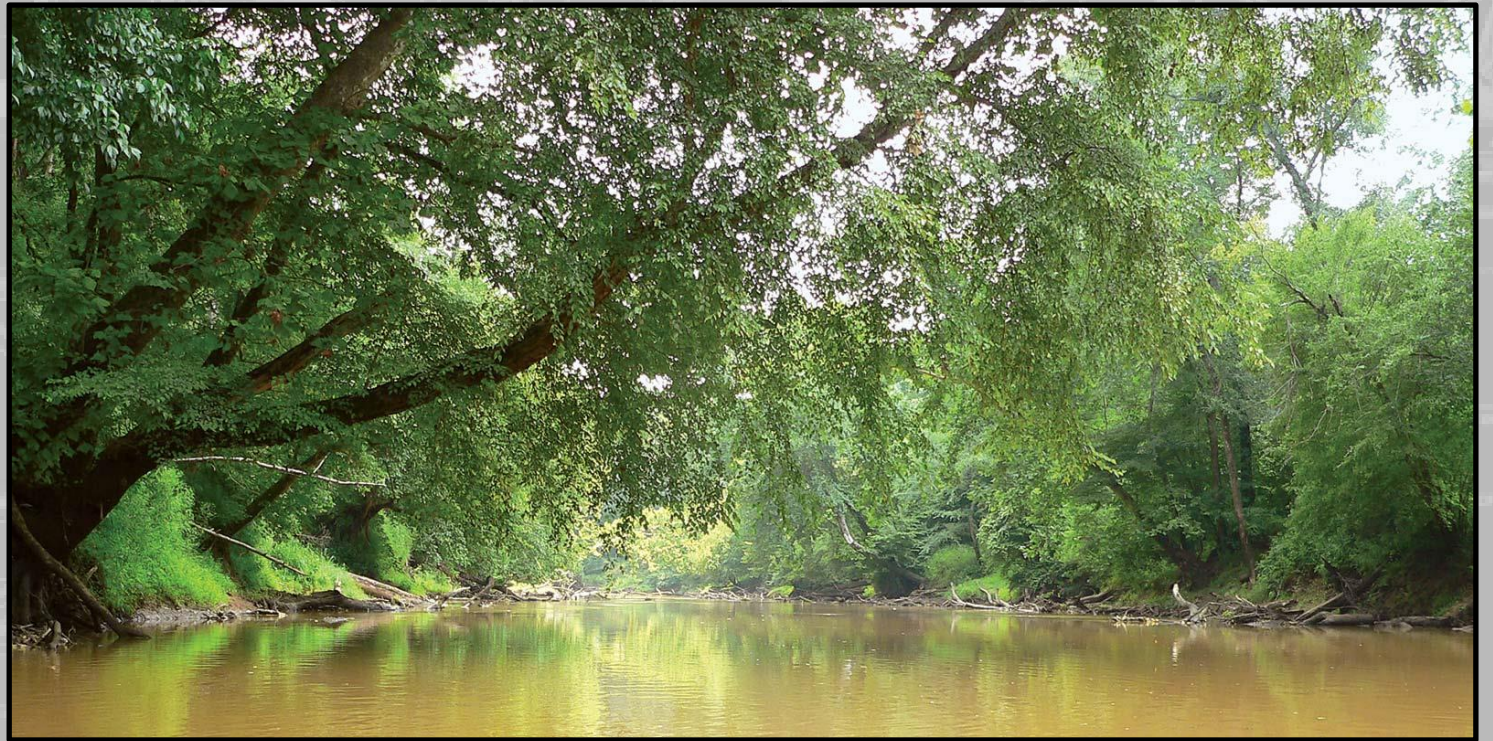
U.S. Army Corps of Engineers, Wilmington District
c/o: Neuse River Basin FRM Project, ATTN: CESAW-PM-DJ
69 Darlington Ave
Wilmington, N.C. 28403

NEUSE RIVER BASIN FLOOD RISK MANAGEMENT FEASIBILITY STUDY

PUBLIC INVOLVEMENT MEETING

Eastern Basin Region:
Pamlico, Craven and Jones Counties
New Bern, Pollocksville
and Trenton

March 29, 2021



US Army Corps
of Engineers®





AGENDA



- Why are we here today?
- What and where are we studying?
- What are the problems?
- How are we conducting the study?
- How can we address the problems?
- What is the study schedule?
- How can you contribute?





WHY ARE WE HERE?





WHERE AND WHAT ARE WE STUDYING?

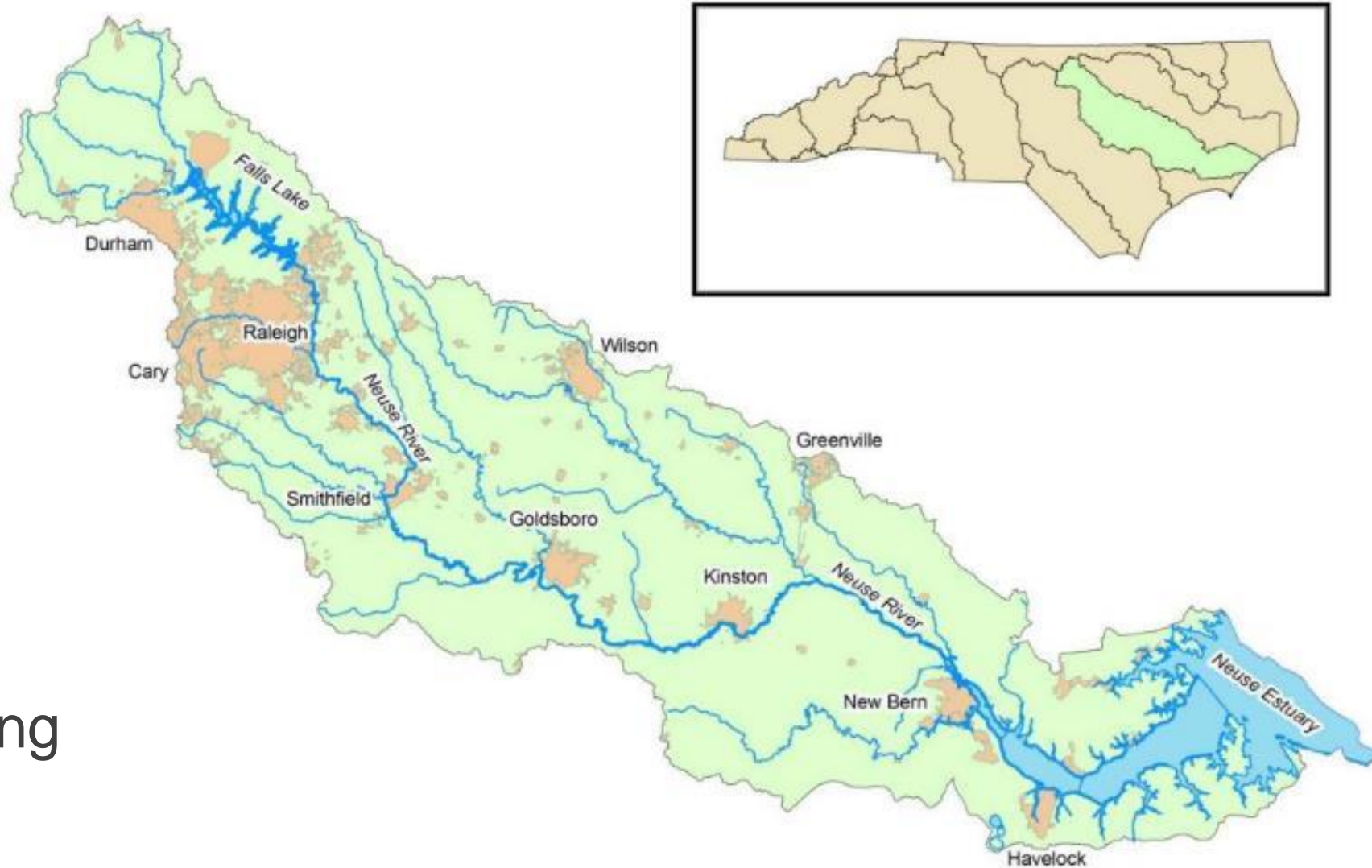


Neuse River Basin

- Population >1.4 million
- 18 counties >8 population centers

Flood Risks

- Riverine and tributary flooding





WHAT ARE THE PROBLEMS?



1. Economic damages
 - Residential and commercial structures
 - Impacts to industry and commerce
 - Public infrastructure
 - Traffic delays and detours
 - Environmental remediation



2. Life safety risks
 - Inundation of structures
 - Loss of evacuation routes
 - Access to critical facilities/recovery aid
 - Inundation of occupied vehicles
 - Impacts to critical infrastructure





HOW ARE WE CONDUCTING THE STUDY?



Planning Process

Identify
problems &
opportunities

- Charrette
- Information gathering meetings (2020)
- *Public meetings (March-April 2021)*



HOW ARE WE CONDUCTING THE STUDY?



Planning Process

Identify
problems &
opportunities

Inventory &
forecast
conditions

- Charrette
- Information gathering meetings (2020)
- *Public meetings (March-April 2021)*

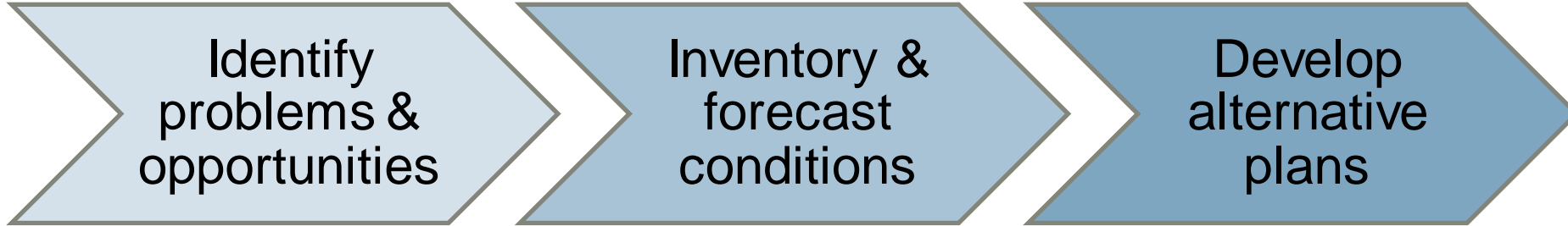
- Hydrologic & hydraulic models
- Economic models
- Environmental conditions
- Current & future conditions



HOW ARE WE CONDUCTING THE STUDY?



Planning Process



- Charrette
- Information gathering meetings (2020)
- *Public meetings (March-April 2021)*

- Hydrologic & hydraulic models
- Economic models
- Environmental conditions
- Current & future conditions

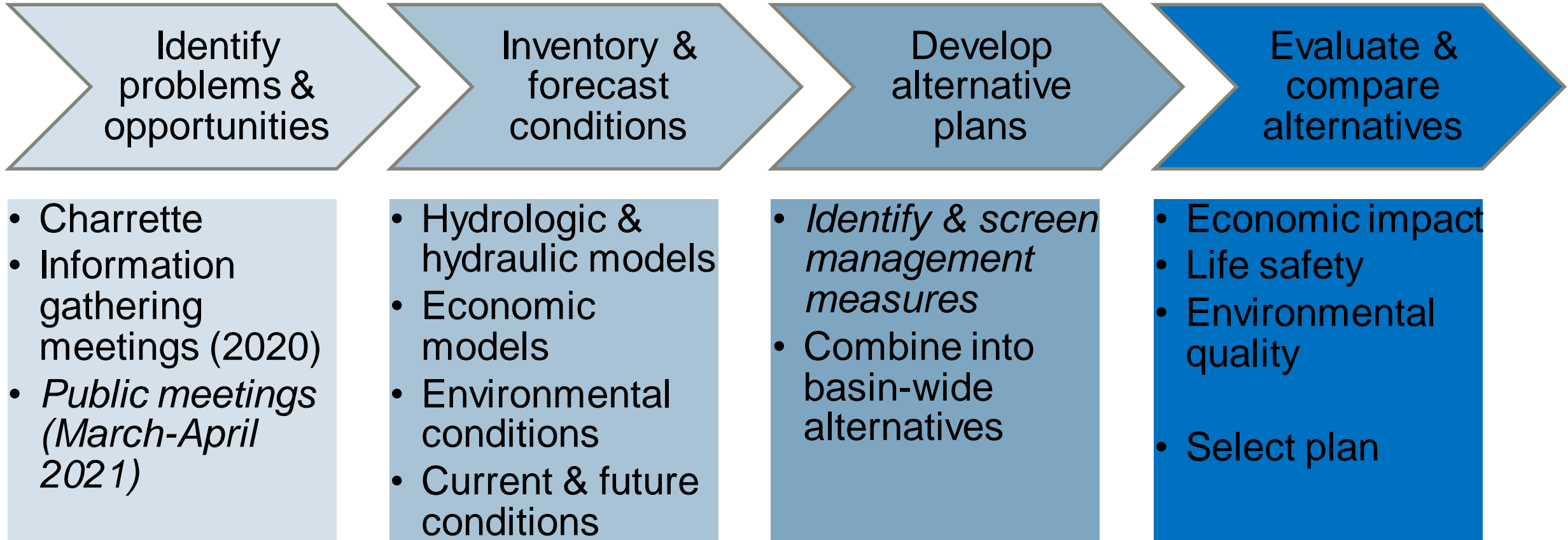
- *Identify & screen management measures*
- Combine into basin-wide alternatives



HOW ARE WE CONDUCTING THE STUDY?



Planning Process



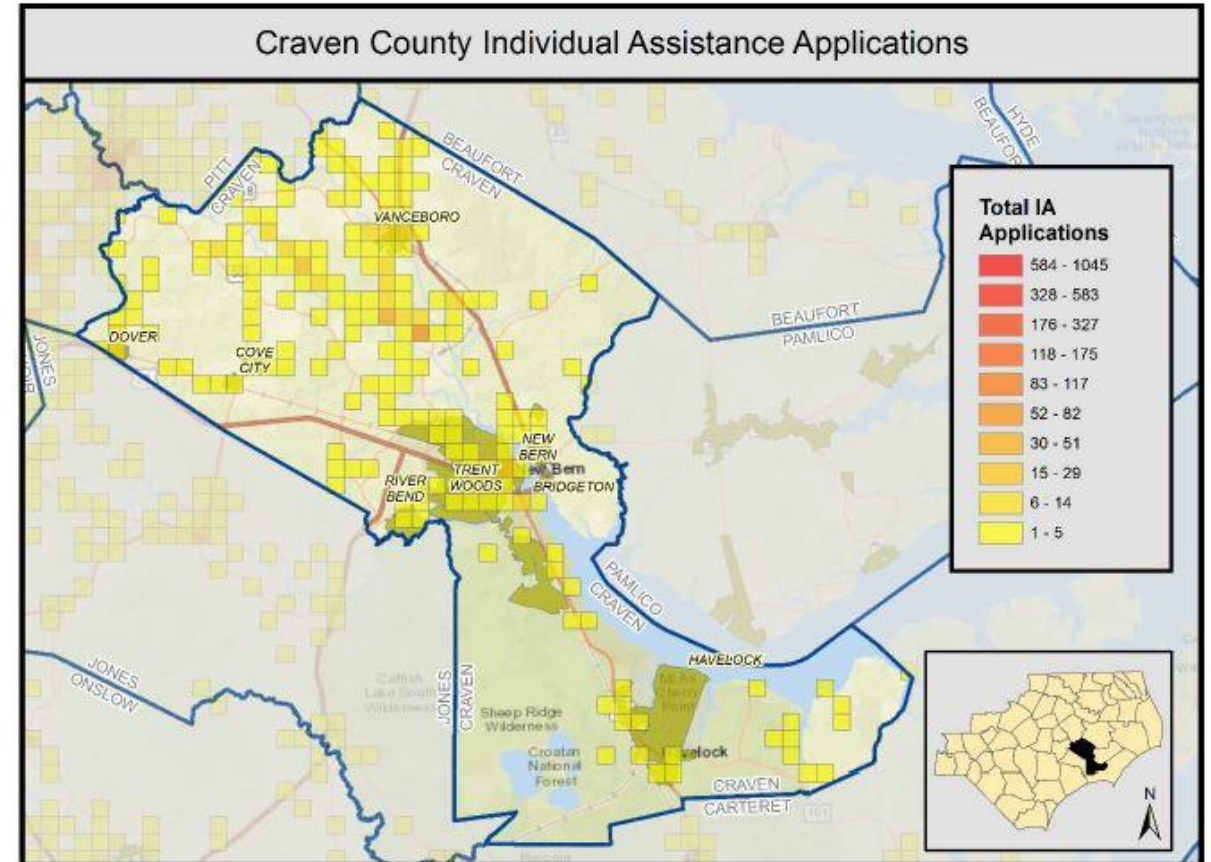
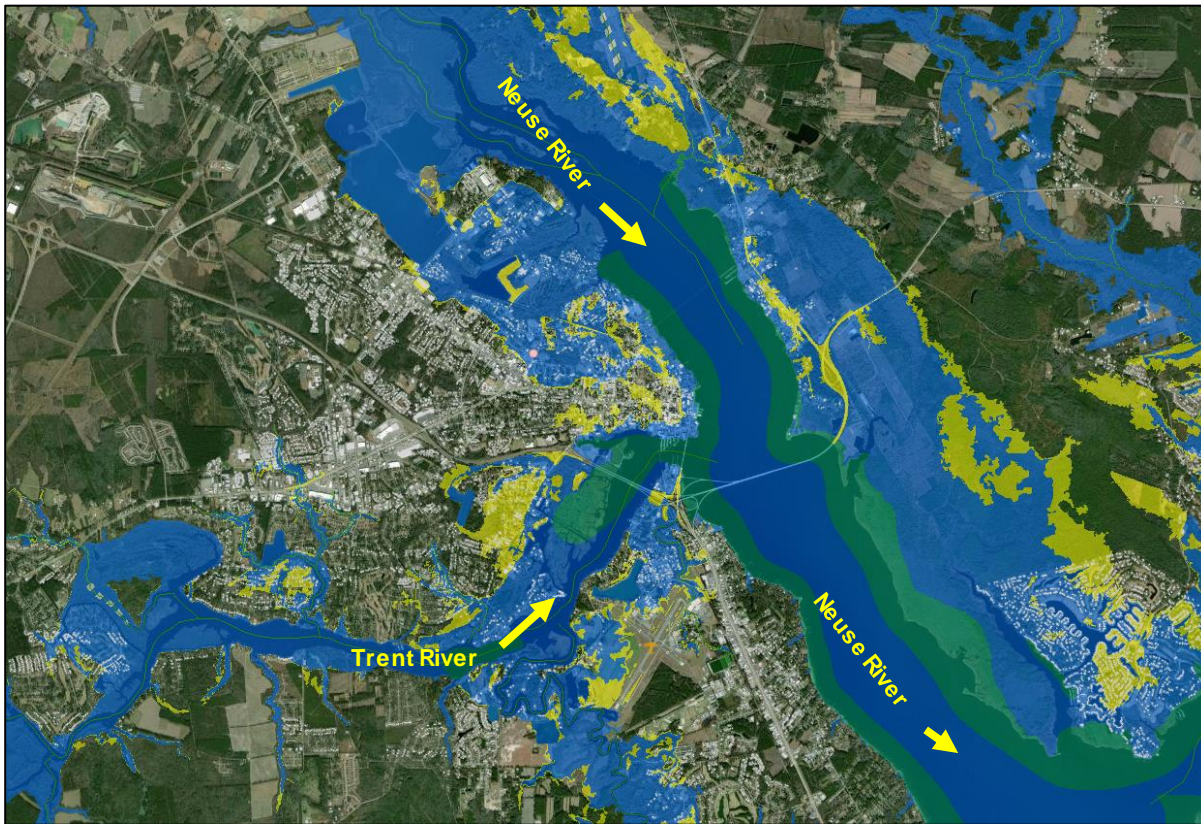


HOW CAN WE ADDRESS THE PROBLEMS?



New Bern/Craven County

County Flood Areas (Matthew Info)



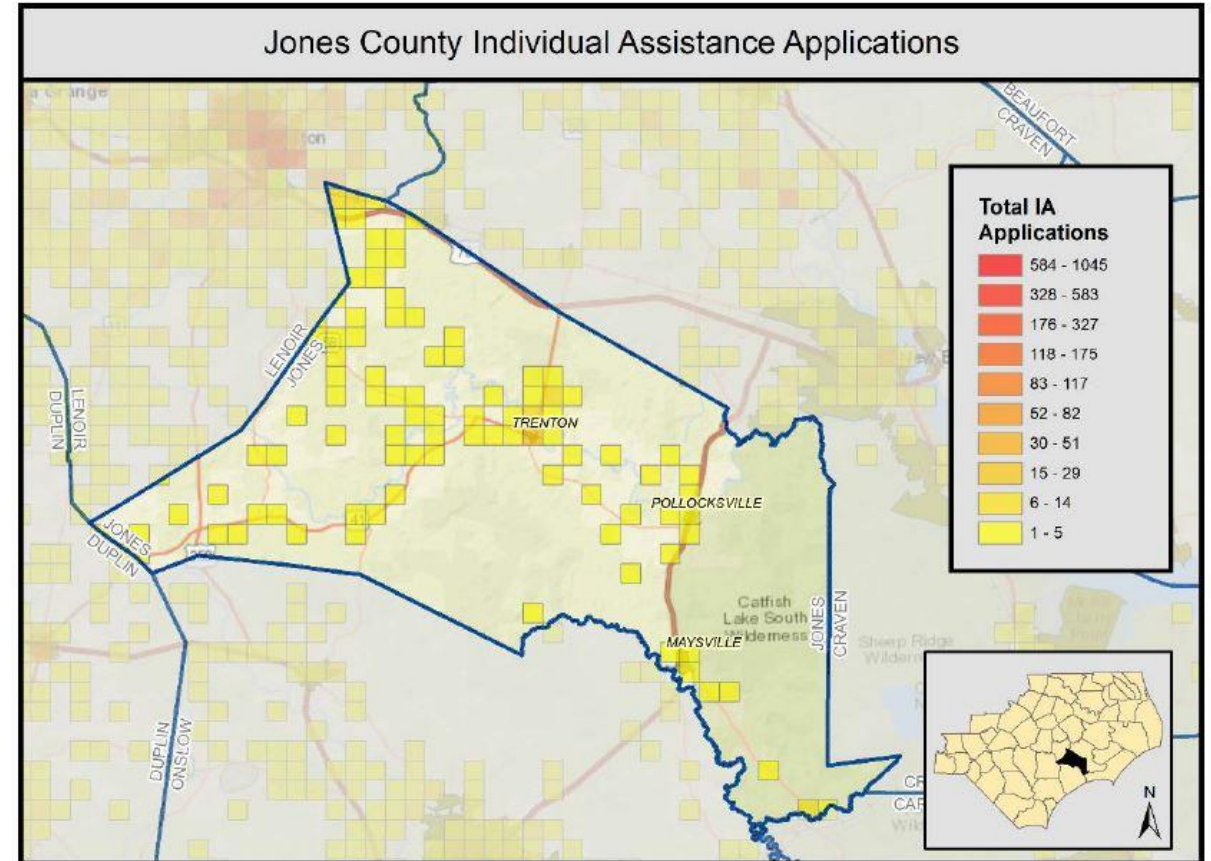
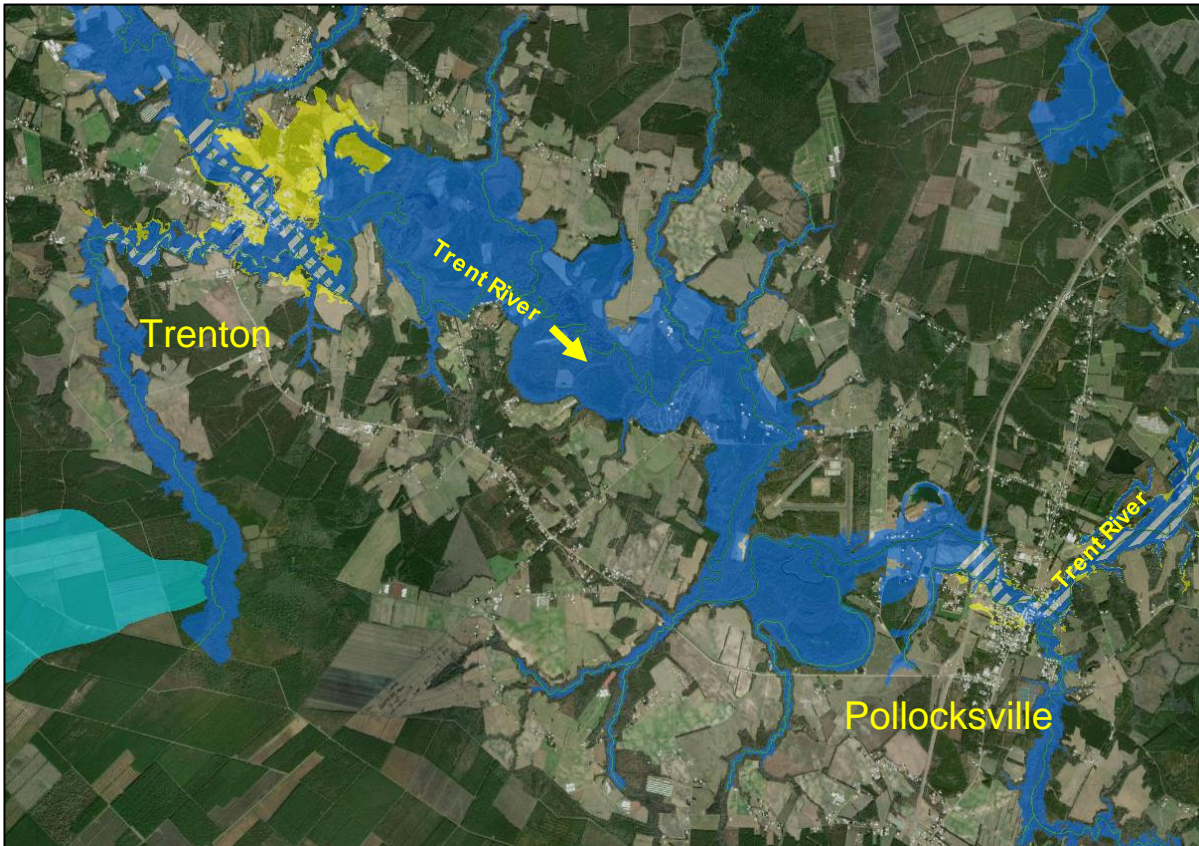


HOW CAN WE ADDRESS THE PROBLEMS?



Pollocksville/Trenton/Jones County

County Flood Areas (Matthew Info)



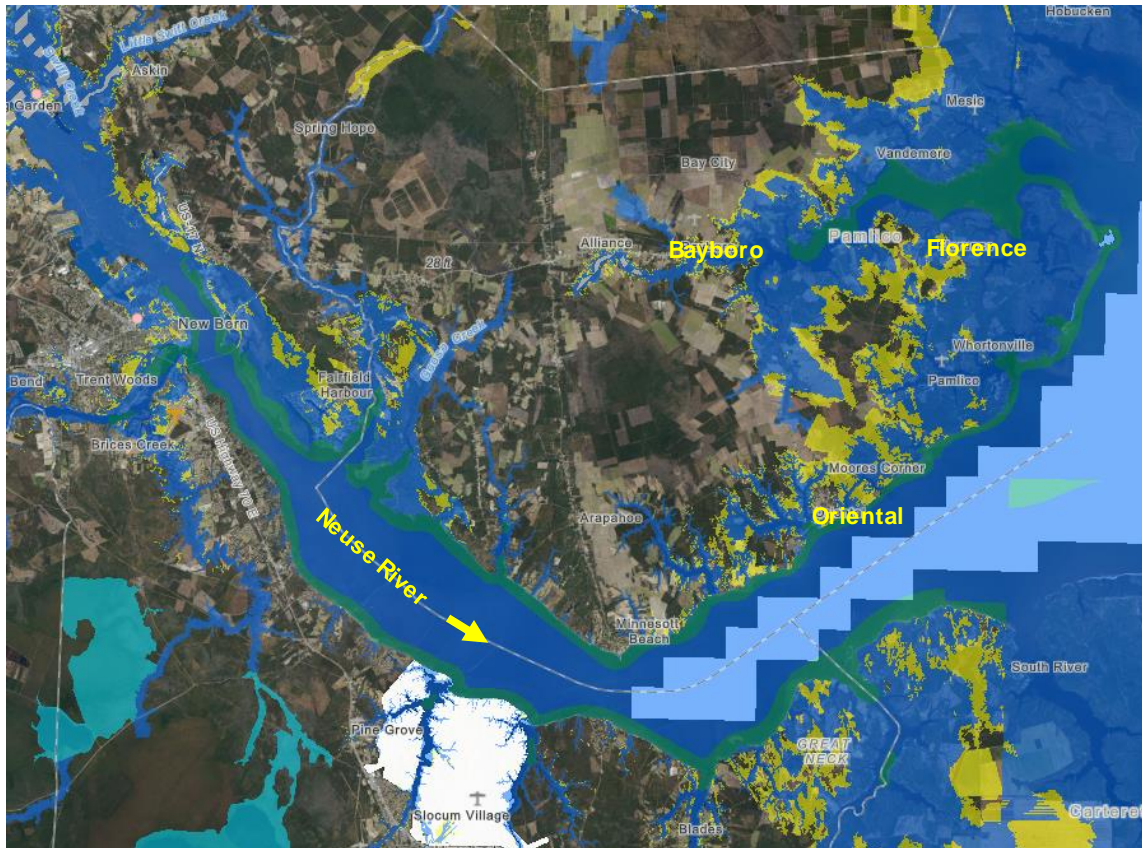


HOW CAN WE ADDRESS THE PROBLEMS?



Pamlico County

County Flood Areas (Matthew)



<https://www.rebuild.nc.gov/resiliency/hurricane-matthew-resilient-redevelopment-plans>

Basin-scale potential management measures

1. Upstream detention/reservoir

- Reservoir: permanent pool
- Detention basin: stores water during peak flows



2. Dispersed water management

- Storage of water on public/private property
- Property owners are compensated
- “Water farming”



3. Floating debris management





Nonstructural potential management measures

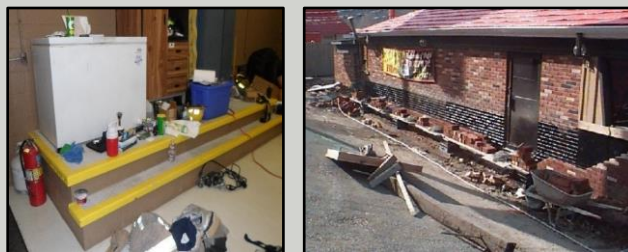
1. Acquisition/
relocation



2. Structure
elevation



3. Floodproofing
 - Wet floodproofing
 - Dry floodproofing



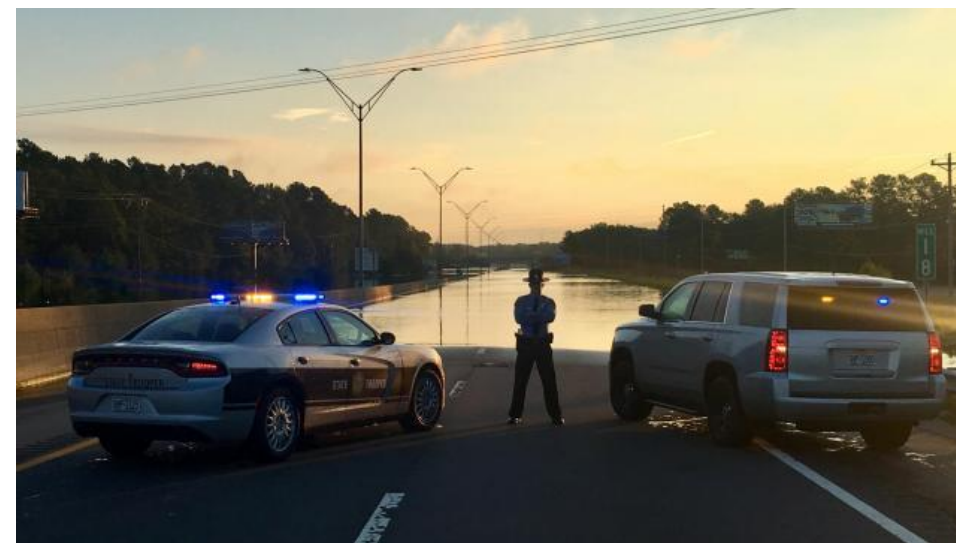
4. Planning &
preparedness

- Flood warning
- Emergency evacuation planning
- Floodplain management
- Flood awareness/education

Transportation

Local modifications to infrastructure that:

- Improve evacuation
- Improve access to critical facilities
- Reduce significant life safety concerns





HOW CAN WE ADDRESS THE PROBLEMS?

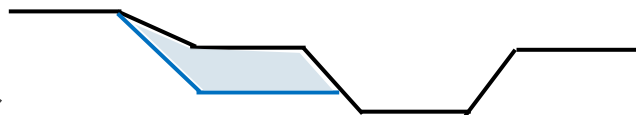


New Bern/Craven County – Potential Management Measures

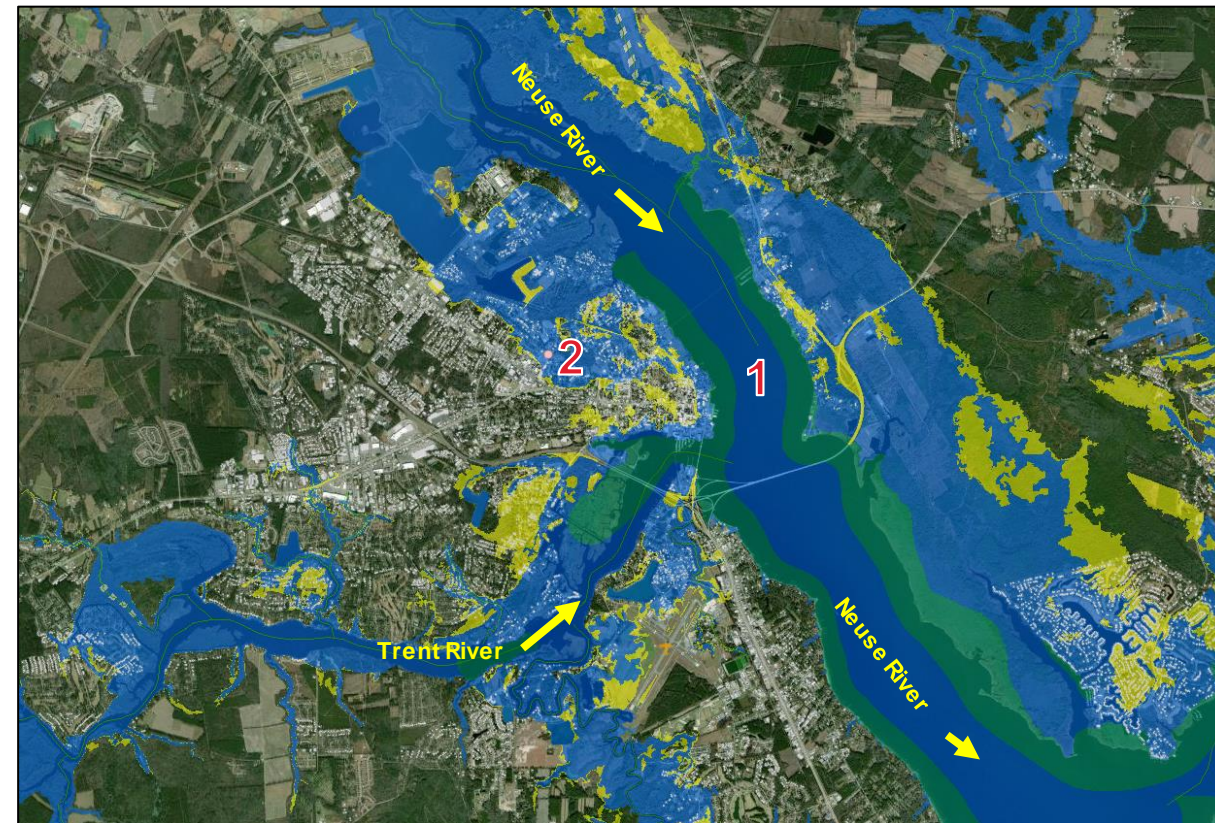
- 1. Levees / floodwalls



- 2. Channel modification & detention



Nonstructural



Note: Measures shown are not based on final analyses. Thus, applicability and locations of measures are subject to change.



HOW CAN WE ADDRESS THE PROBLEMS?



Pollocksville/Trenton/Jones County – Potential Management Measures

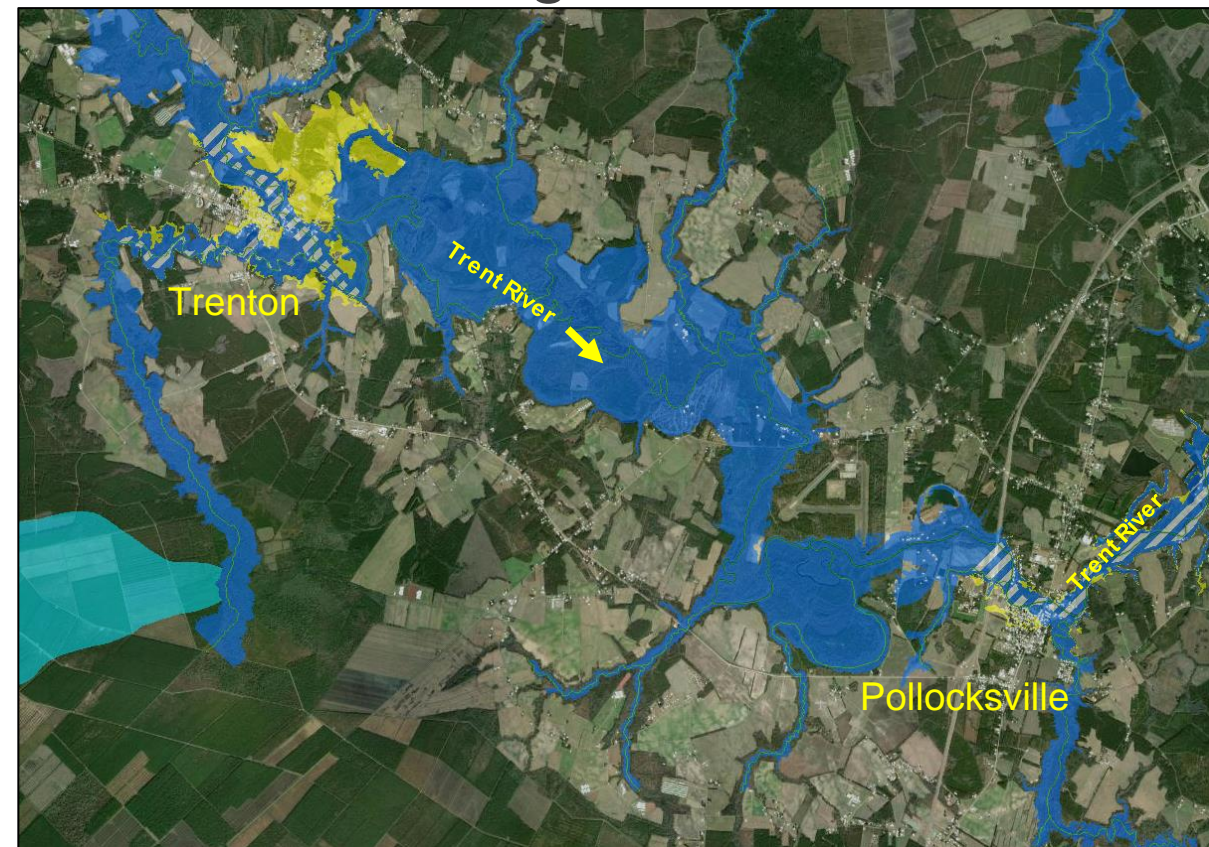
Building modification



Acquisition or relocation



Flood warning and awareness



Note: Measures shown are not based on final analyses. Thus, applicability and locations of measures are subject to change.



HOW CAN WE ADDRESS THE PROBLEMS?

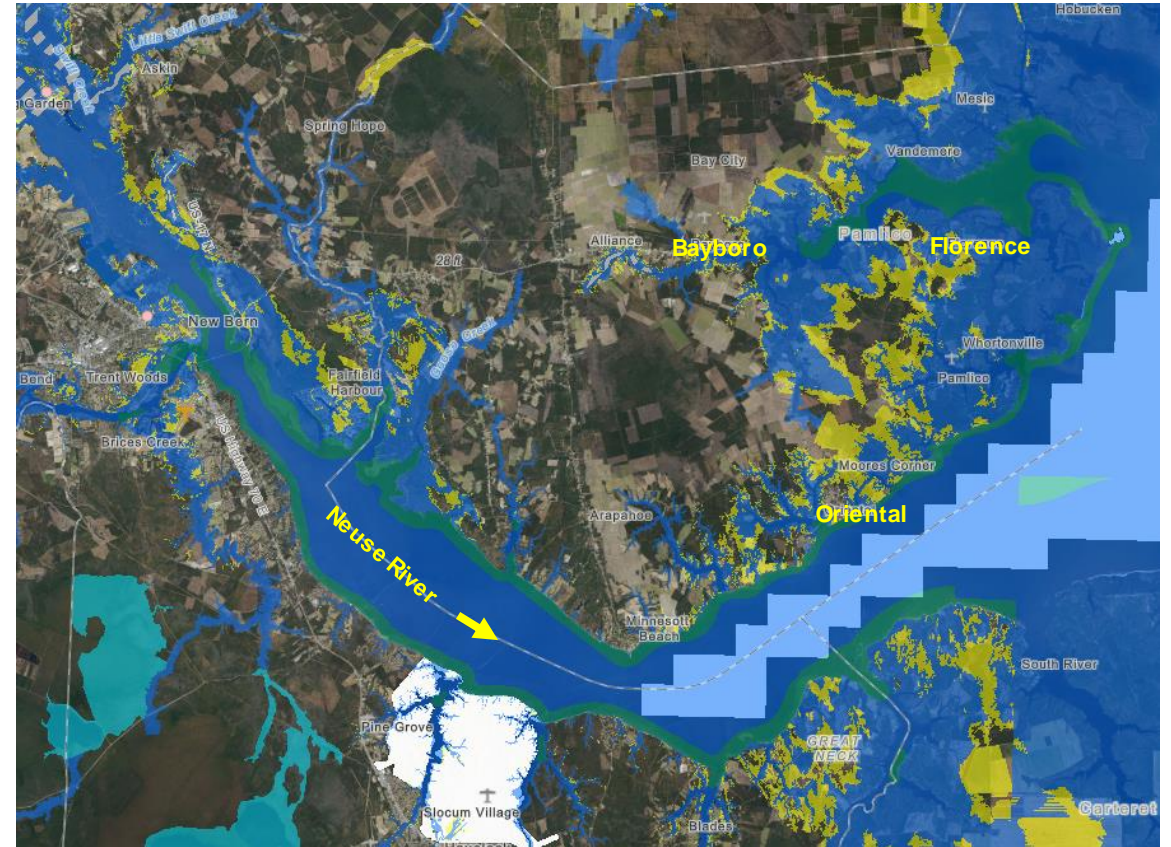


Pamlico County – Potential Management Measures

Building modification



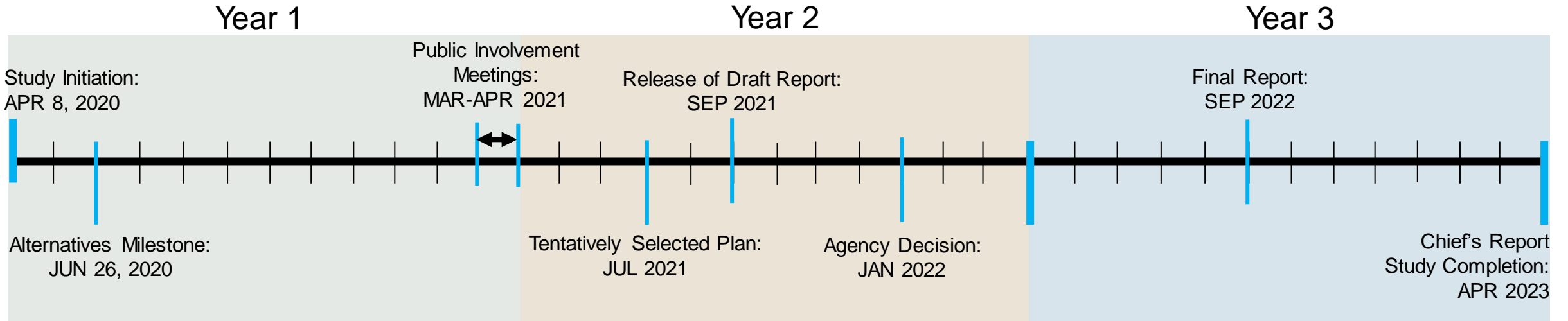
Acquisition or relocation



Note: Measures shown are not based on final analyses. Thus, applicability and locations of measures are subject to change.



TENTATIVE SCHEDULE AND PLANNING PROCESS



Washington-level review



HOW CAN YOU CONTRIBUTE?



We'd like for you to tell us:

- What impacts have you experienced because of the floods?
- What concerns do you have with this study?
- Which of the proposed measures would you prefer and why?
- What critical local resources do we need to be aware of to protect or avoid?
- What else we should know about?



HOW CAN YOU CONTRIBUTE?



- *Welcome to the Neuse River Basin Flood Risk Management Feasibility Study Public Involvement Meeting*
- *<https://www.facebook.com/usace.wilmington>*
- Submit questions via the chat function in FACEBOOK Livestream
- Questions can also be submitted:
 - By Email: CESAW-Neuse River Basin FRM@usace.army.mil
using the subject line “Neuse River Basin Study – Scoping Comment”

- By mail:

U.S. Army Corps of Engineers, Wilmington District
c/o: Neuse River Basin FRM Project, ATTN: CESAW-PM-DJ
69 Darlington Ave
Wilmington, N.C. 28403