



**US Army Corps
of Engineers**®
Wilmington District

CESAW-OPS

9 April 2021

PUBLIC NOTICE

EMERGENCY DREDGING ACTION
BIG FOOT SLOUGH CHANNEL
Portion of Silver Lake Harbor Project, Ocracoke NC

TO WHOM IT MAY CONCERN:

The U.S. Army Corps of Engineers, Wilmington District (Corps), has determined that emergency conditions exist in the subject section of the Big Foot Slough Channel Project (vicinity of Silver Lake Harbor) that poses an immediate threat to navigation (Figure 1). Emergency action is needed between buoy locations 12 and 10A, which requires the immediate removal of approximately 10,000 cubic yards of fine-grained sandy material from within the Federal Navigation Channel and the bypass channel to the west (Figure 2).

Big Foot Slough is used by the North Carolina Ferry System to transport supplies and residents to and from Ocracoke Island. On April 7, the North Carolina Department of Transportation Ferry Division suspended ferry operations due to unsafe conditions. Safe transit for the ferry system and its passengers and cargo is essential to this area and disruption of this system has significant economic and safety impacts. The Big Foot Slough channel is also used by the U.S. Coast Guard (USCG) navigational aid vessel and for search and rescue missions, and the channel is used by the fishing industry, including trawlers, recreational fishermen and seafood houses.

Current controlling depths in the channel are approximately -3 feet mean low low water (mllw) and the authorized depth is -12 mllw +2 feet overdepth. Emergency dredging will only be performed to a depth of -10 feet + 2 feet overdepth to allow the safe passage of vessels to and from Silver Lake Harbor. Work will be performed by the Government-owned shallow draft sidecast dredge MERRITT and the special purpose hopper dredge MURDEN (for 10 to 15 days) to establish a southwestwardly bypass channel alignment. Dredged material will be sidecast by the Merritt adjacent to the proposed bypass channel to the west of the project area. Material dredged by the Murden will be placed in deep water within the channel, to the southeast (Figure 2). No Submerged Aquatic Vegetation (SAV) has been identified in the area of sidecasting. SAV has been identified approximately 500 feet to the east of the deep-water placement area and should not be affected by the project. Work could commence as early as 10 April 2021.

The procedures outlined in the December 1986 Memorandum of Agreement between the State of North Carolina Division of Environmental Quality and the U.S. Army Corps of Engineers, Wilmington District, were followed to obtain all necessary clearances for the emergency action to take place.

This public notice is being distributed to all known interested persons for informational purposes only. For further information, please contact Ms. Jenny Owens, telephone (910) 251-4757.

This public notice satisfies the notification requirements of Executive Order 11988 and Sections 401 and 404 of the Clean Water Act.

Daniel Brown
Chief, Operations Division

Ocracoke Island and Vicinity, North Carolina



Pamlico Sound

Rollinson Channel

Hatteras Ferry Channels

Hatteras

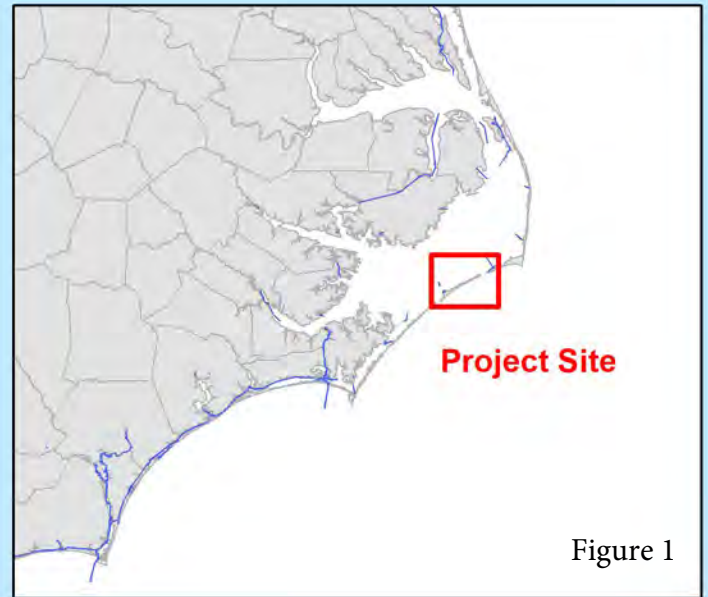
Dredging Location

Big Foot Slough

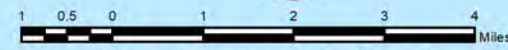
Silver Lake Harbor

Ocracoke

Teaches Hole

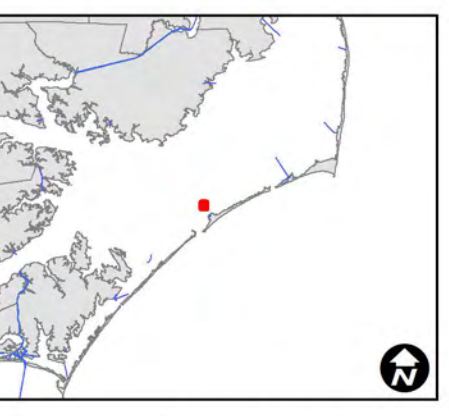
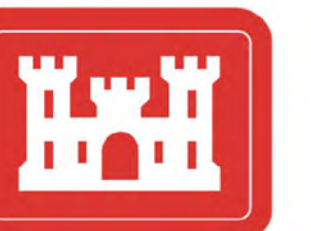


Project Site

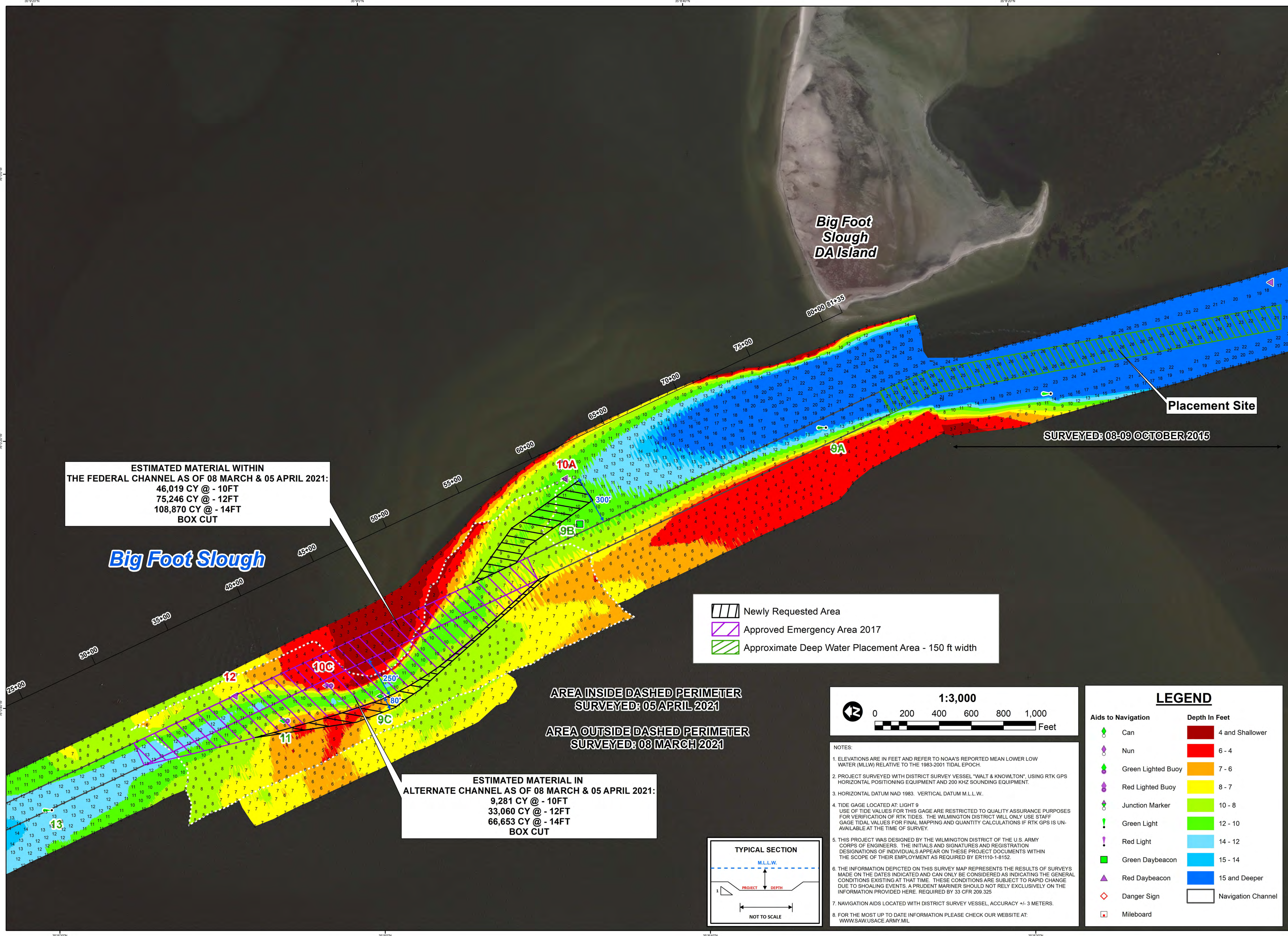


Map # sawnavgis-21-11

Figure 1



SURVEY DATE: 08 MARCH & 05 APRIL 2021	SURVEYED BY: CRP, RW, SSS, JD
MAP DATE: 08 APRIL 2021	MAPPED BY: K7OPNLAC
MAP SCALE: 1:3,000	PROCESSED BY: K7OPNLAC
IMAGERY DATE: 16 FEBRUARY 2021	MAP FILE NAME: SL_04_BIG_20210405_CS
© 2021 DIGITALGLOBE NEXTVIEW LICENSE	



ESTIMATED MATERIAL WITHIN THE FEDERAL CHANNEL AS OF 08 MARCH & 05 APRIL 2021:
 46,019 CY @ - 10FT
 75,246 CY @ - 12FT
 108,870 CY @ - 14FT
 BOX CUT

Placement Site

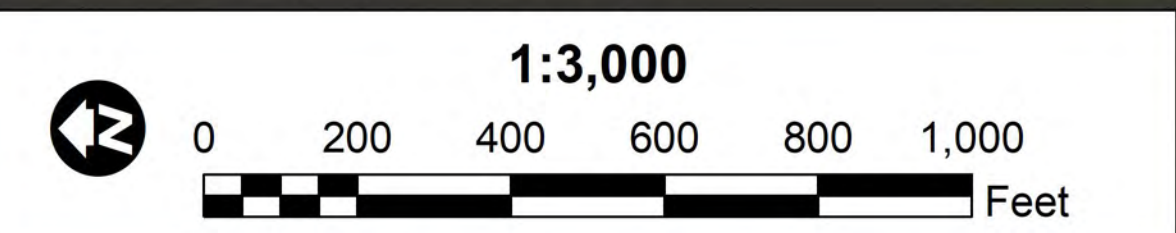
SURVEYED: 08-09 OCTOBER 2015

- Newly Requested Area
- Approved Emergency Area 2017
- Approximate Deep Water Placement Area - 150 ft width

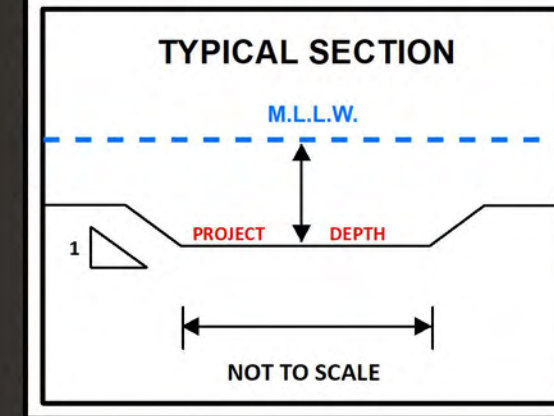
AREA INSIDE DASHED PERIMETER
SURVEYED: 05 APRIL 2021

AREA OUTSIDE DASHED PERIMETER
SURVEYED: 08 MARCH 2021

ESTIMATED MATERIAL IN ALTERNATE CHANNEL AS OF 08 MARCH & 05 APRIL 2021:
 9,281 CY @ - 10FT
 33,060 CY @ - 12FT
 66,653 CY @ - 14FT
 BOX CUT



- NOTES:
- ELEVATIONS ARE IN FEET AND REFER TO NOAA'S REPORTED MEAN LOWER LOW WATER (MLLW) RELATIVE TO THE 1983-2001 TIDAL EPOCH.
 - PROJECT SURVEYED WITH DISTRICT SURVEY VESSEL "WALT & KNOWLTON", USING RTK GPS HORIZONTAL POSITIONING EQUIPMENT AND 200 KHZ SOUNDING EQUIPMENT.
 - HORIZONTAL DATUM NAD 1983. VERTICAL DATUM M.L.L.W.
 - TIDE GAGE LOCATED AT: LIGHT 9
USE OF TIDE VALUES FOR THIS GAGE ARE RESTRICTED TO QUALITY ASSURANCE PURPOSES FOR VERIFICATION OF RTK TIDES. THE WILMINGTON DISTRICT WILL ONLY USE STAFF GAGE TIDAL VALUES FOR FINAL MAPPING AND QUANTITY CALCULATIONS IF RTK GPS IS UNAVAILABLE AT THE TIME OF SURVEY.
 - THIS PROJECT WAS DESIGNED BY THE WILMINGTON DISTRICT OF THE U.S. ARMY CORPS OF ENGINEERS. THE INITIALS AND SIGNATURES AND REGISTRATION DESIGNATIONS OF INDIVIDUALS APPEAR ON THESE PROJECT DOCUMENTS WITHIN THE SCOPE OF THEIR EMPLOYMENT AS REQUIRED BY ER1110-1-8152.
 - THE INFORMATION DEPICTED ON THIS SURVEY MAP REPRESENTS THE RESULTS OF SURVEYS MADE ON THE DATES INDICATED AND CAN ONLY BE CONSIDERED AS INDICATING THE GENERAL CONDITIONS EXISTING AT THAT TIME. THESE CONDITIONS ARE SUBJECT TO RAPID CHANGE DUE TO SHOALING EVENTS. A PRUDENT MARINER SHOULD NOT RELY EXCLUSIVELY ON THE INFORMATION PROVIDED HERE. REQUIRED BY 33 CFR 209.325
 - NAVIGATION AIDS LOCATED WITH DISTRICT SURVEY VESSEL, ACCURACY +/- 3 METERS.
 - FOR THE MOST UP TO DATE INFORMATION PLEASE CHECK OUR WEBSITE AT: WWW.SAV.USACE.ARMY.MIL



LEGEND	
Aids to Navigation	Depth In Feet
Can	4 and Shallower
Nun	6 - 4
Green Lighted Buoy	7 - 6
Red Lighted Buoy	8 - 7
Junction Marker	10 - 8
Green Light	12 - 10
Red Light	14 - 12
Green Daybeacon	15 - 14
Red Daybeacon	15 and Deeper
Danger Sign	Navigation Channel
Mileboard	