

Predicted MHHW



9-yr Predicted MHHW Shoreline, Alternative # 3

Mapping Limit, Predicted Habitat Areas

Subtidal = 194.1 (+7.2)

Wet Beach = 21.8 (+1.0)

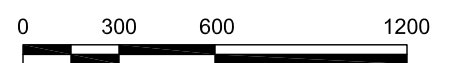
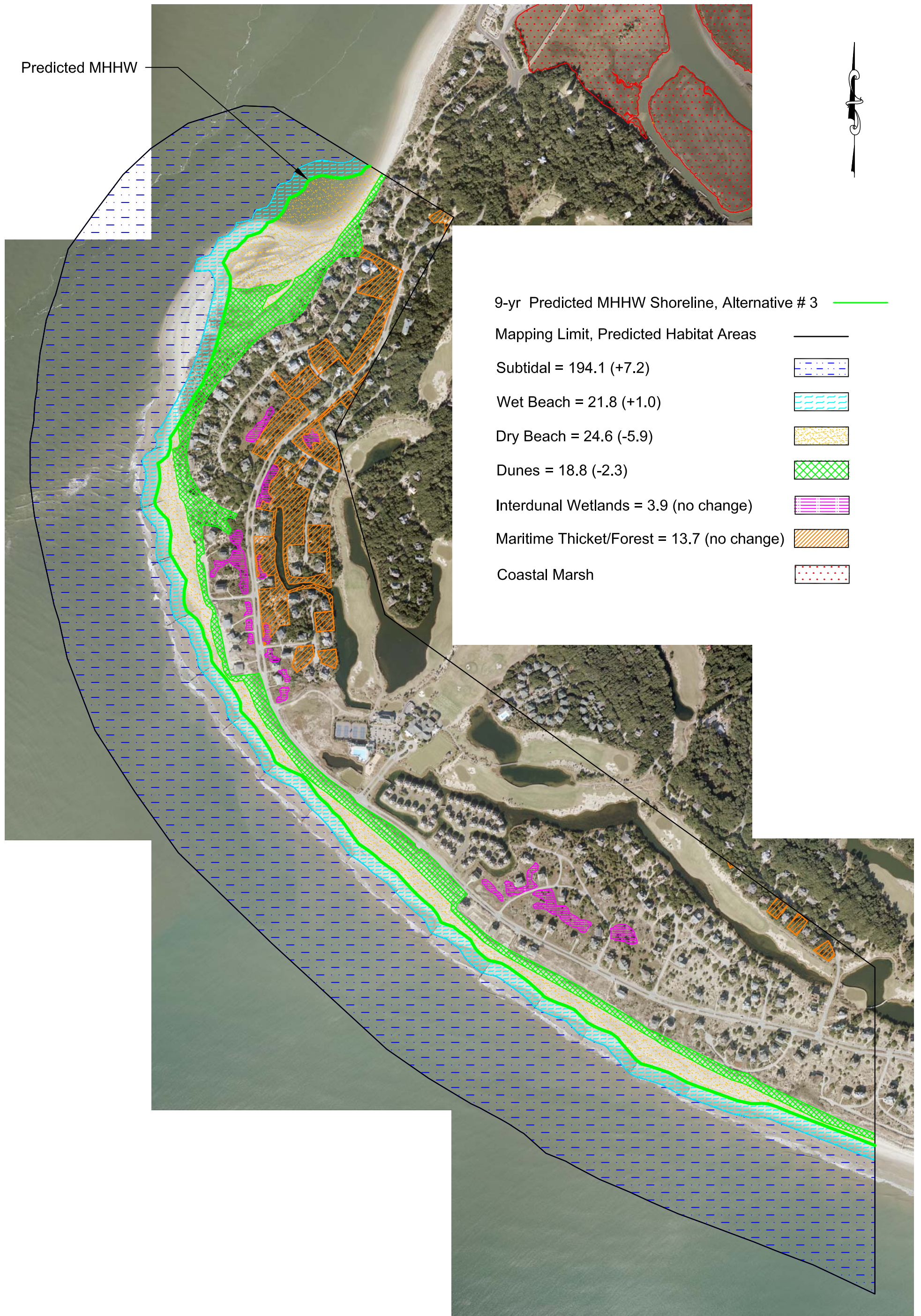
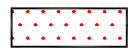
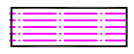
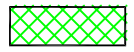
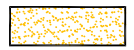
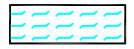
Dry Beach = 24.6 (-5.9)

Dunes = 18.8 (-2.3)

Interdunal Wetlands = 3.9 (no change)

Maritime Thicket/Forest = 13.7 (no change)

Coastal Marsh



Aerial photography is dated 12/14/2012.



Post Office Box 2522
Wilmington, North Carolina 28402
Telephone: 910-452-0001

Project: **Village of Bald Head Island Shoreline Protection Project Draft Environmental Impact Statement**

Title: **9-yr MHHW Alternative # 3 Predicted Habitat Areas**

Date: 4/8/2013

Scale: **1"=600'**

Drawn By:

Revision Date: NA

Job Number: 40-11-238

Sheet Number: **Figure 5.18**