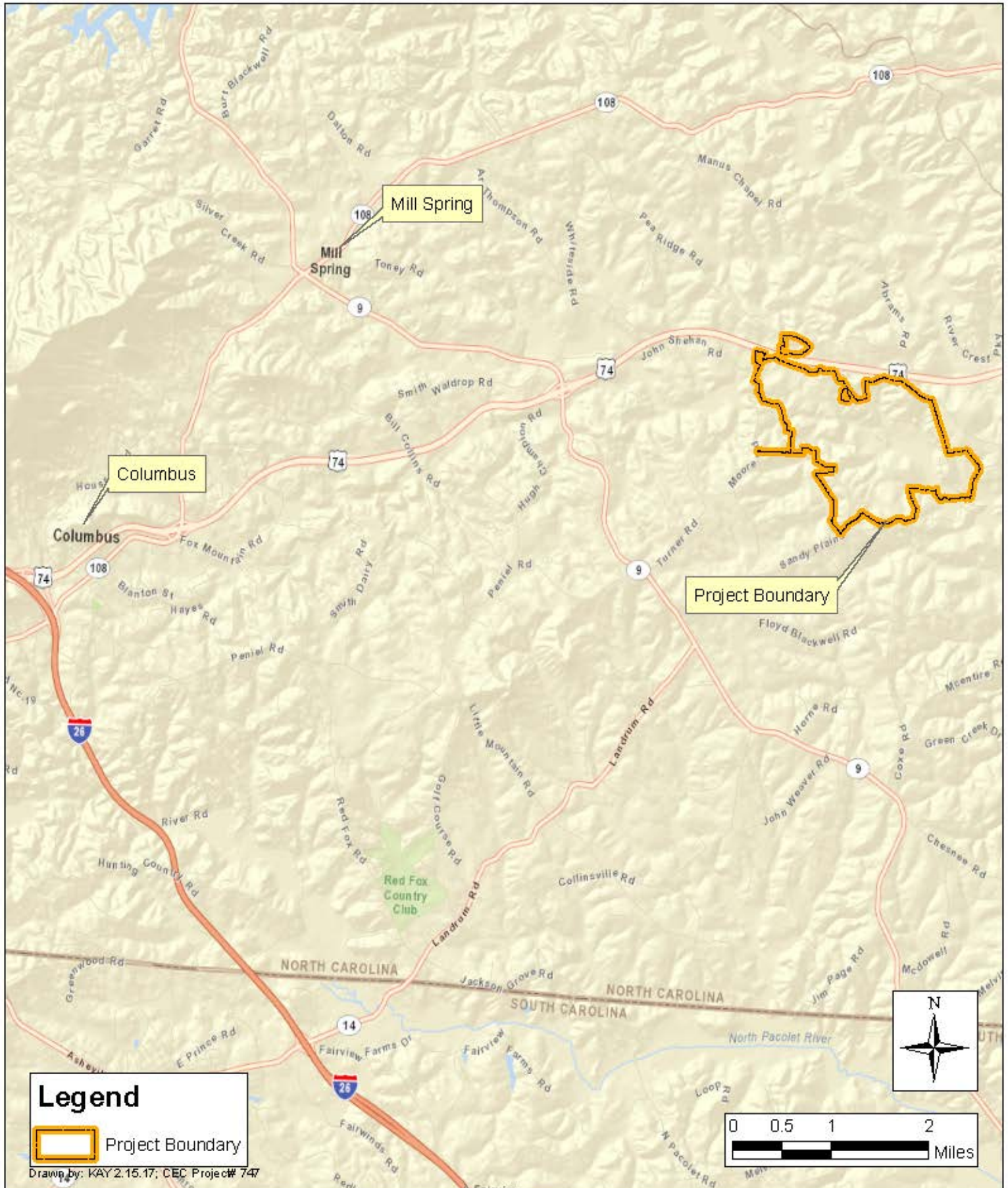


# Tryon International Equestrian Center (+/- 1,405 AC)



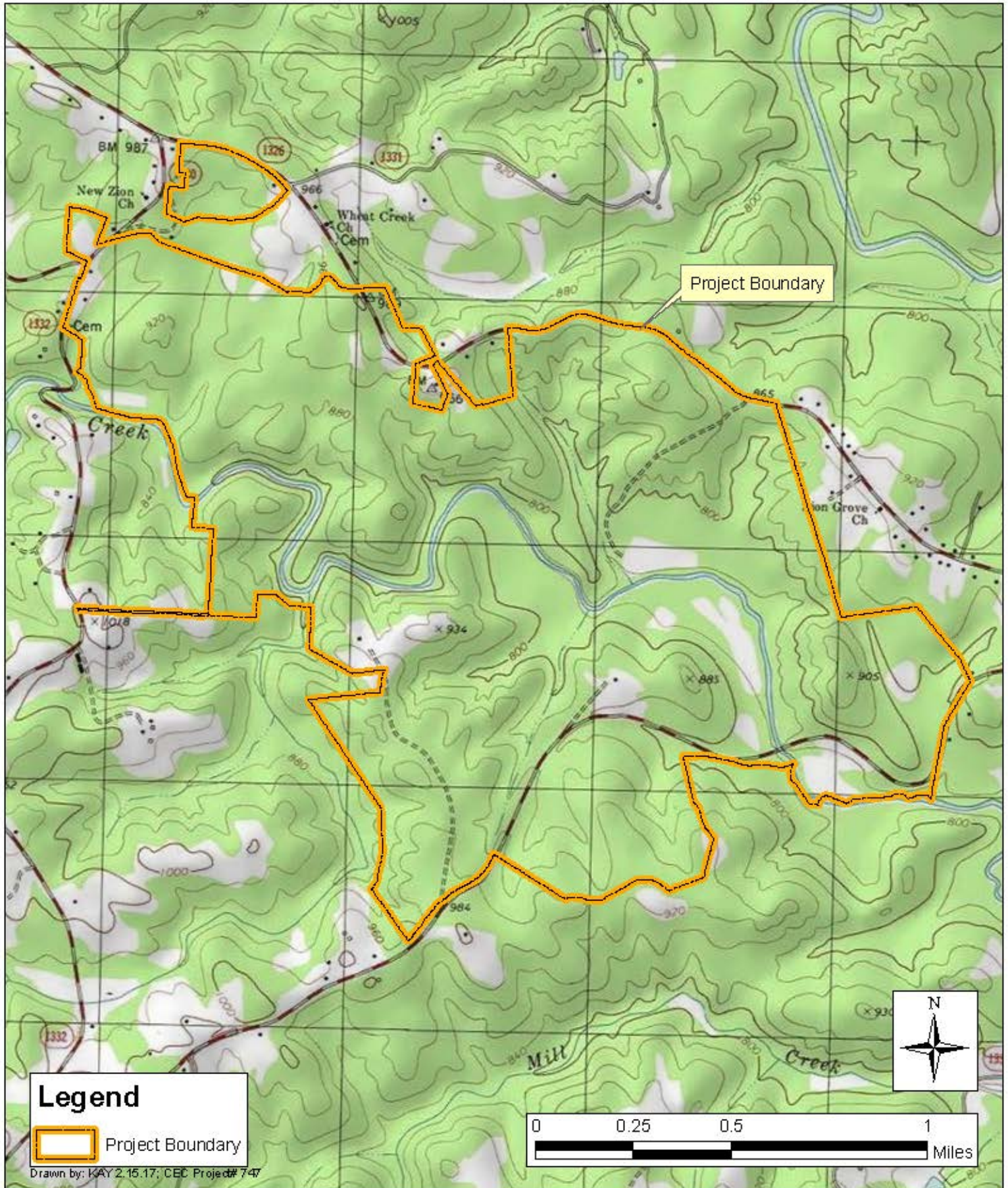
Polk County,  
North Carolina

**ClearWater**

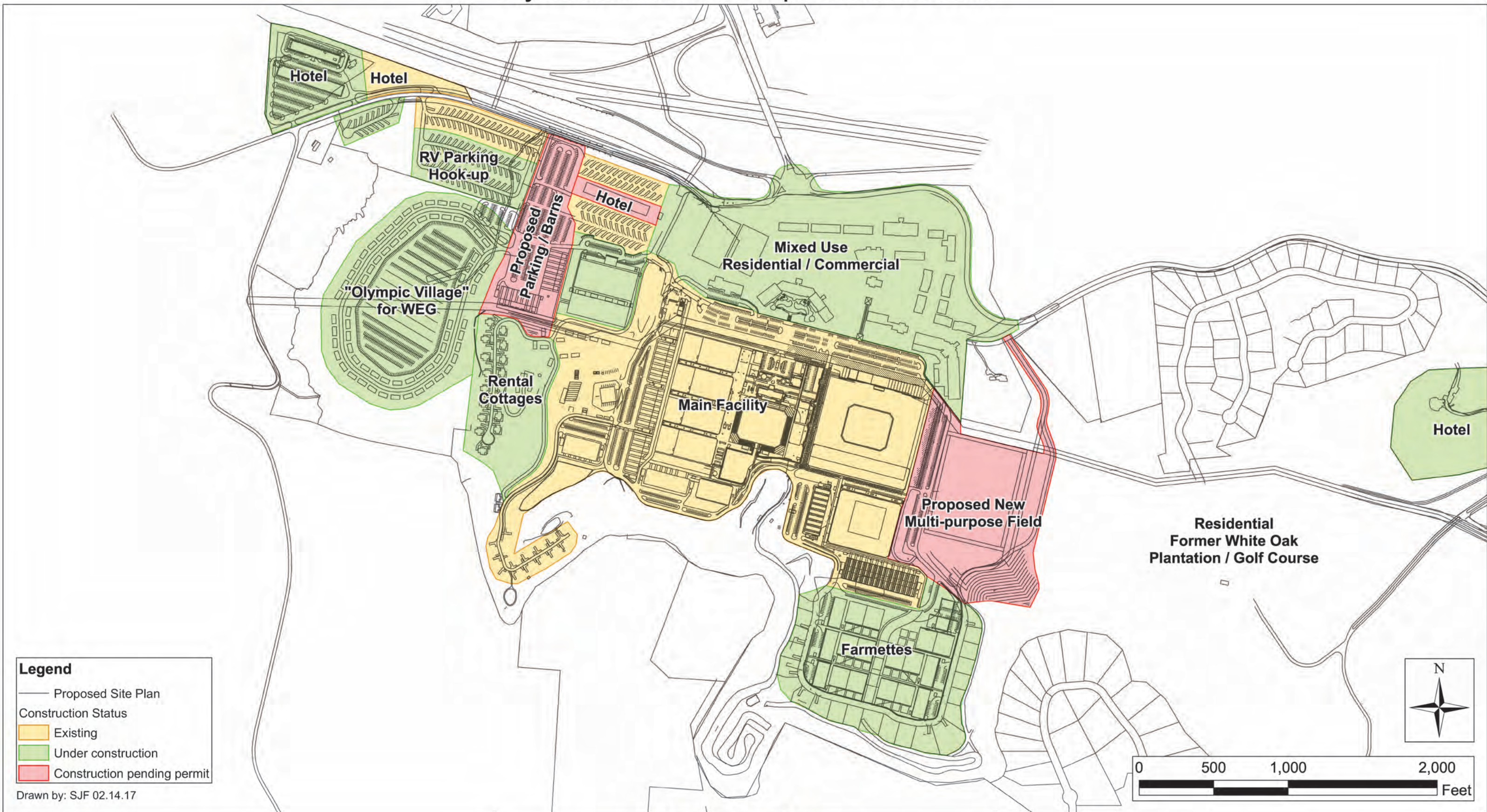
32 Clayton Street  
Asheville, North Carolina 28801

Site Vicinity  
Figure 1

# Tryon International Equestrian Center (+/- 1,405 AC)



# Tryon International Equestrian Center



Polk County,  
North Carolina

**ClearWater**

32 Clayton Street  
Asheville, North Carolina 28801

Figure 4.  
Tryon International Equestrian Center  
Existing Conditions Programming Map

# Tryon International Equestrian Center

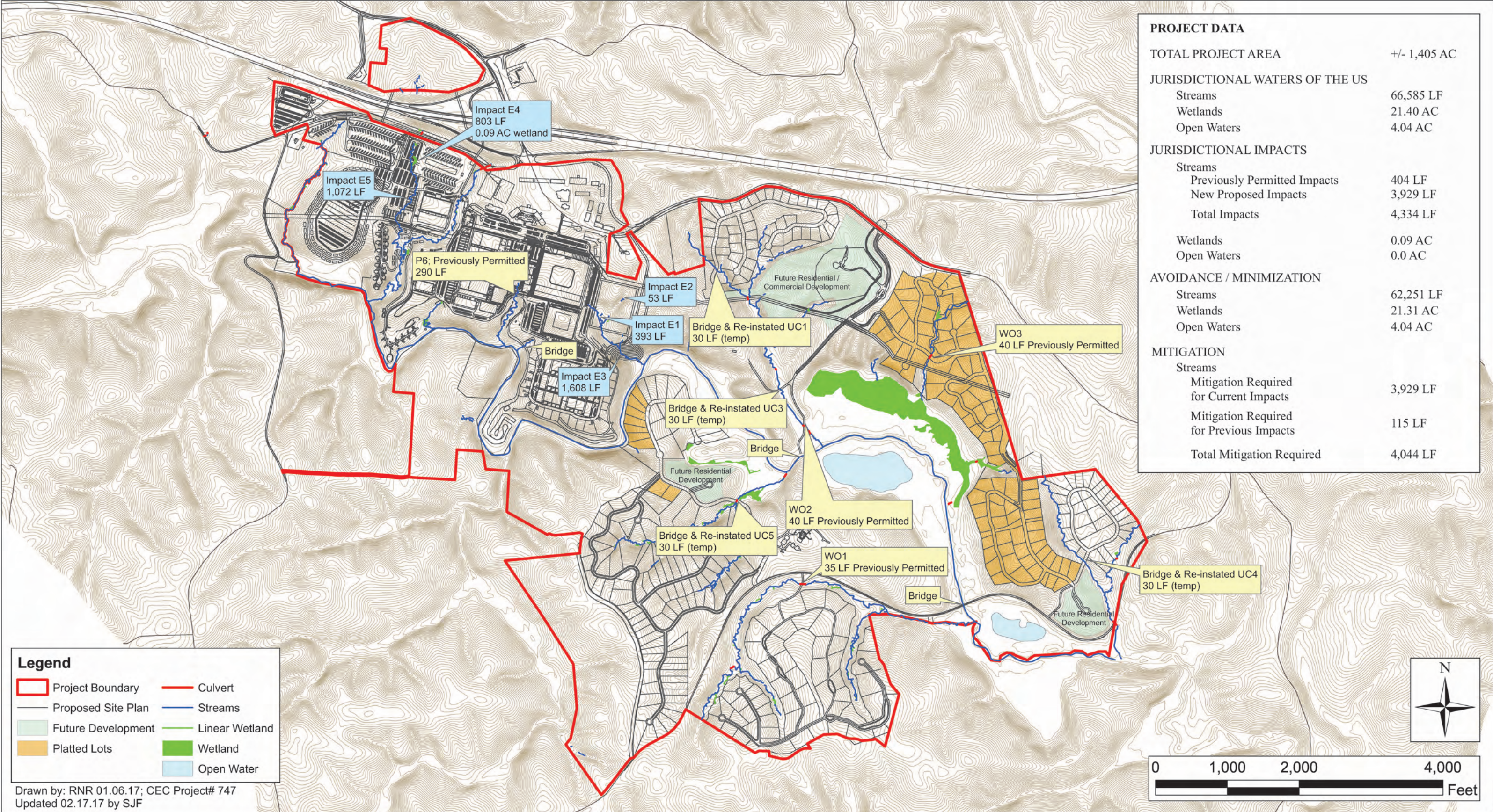


Polk County  
North Carolina

**ClearWater**  
32 Clayton Street  
Asheville, North Carolina 28801

Figure 5  
Tryon International Equestrian Center  
Existing Conditions Aerial Map

# Tryon International Equestrian Center (+/- 1,405 AC)



PROJECT DATA	
TOTAL PROJECT AREA	+/- 1,405 AC
JURISDICTIONAL WATERS OF THE US	
Streams	66,585 LF
Wetlands	21.40 AC
Open Waters	4.04 AC
JURISDICTIONAL IMPACTS	
Streams	
Previously Permitted Impacts	404 LF
New Proposed Impacts	3,929 LF
<b>Total Impacts</b>	<b>4,334 LF</b>
Wetlands	
Open Waters	0.09 AC
0.0 AC	
AVOIDANCE / MINIMIZATION	
Streams	
Wetlands	62,251 LF
Open Waters	21.31 AC
4.04 AC	
MITIGATION	
Streams	
Mitigation Required for Current Impacts	3,929 LF
Mitigation Required for Previous Impacts	115 LF
<b>Total Mitigation Required</b>	<b>4,044 LF</b>



**Odom**  
Engineering  
PLLC

169 Oak Street, Forest City, N.C. 28043  
ph: 828.247.4495 fax: 828.247.4498  
P-0880



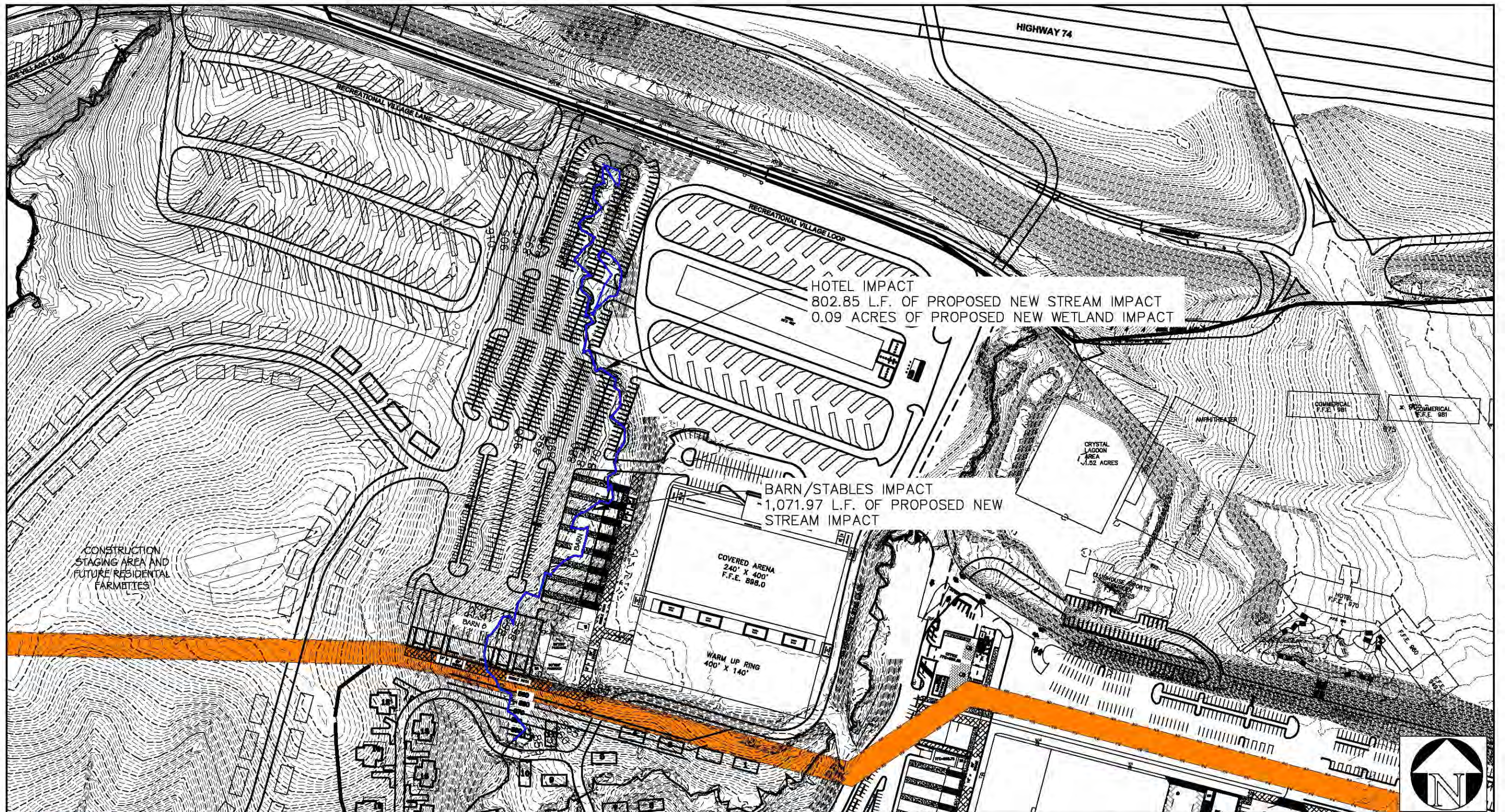
JOB NAME: TRYON INTERNATIONAL EQUESTRIAN CENTER  
OVERALL AREAS

LOCATION: TRYON, N.C.

DESCRIPTION: OVERALL PLAN

SCALE: 1" = 200'	DRAWN BY: JCW
DATE: 02/10/17	CHECKED BY: DWO
	PROJECT MGR: DWO

PROJECT NUMBER	SHEET
16120	FIGURE 7A



**Odom**  
Engineering  
PLLC

169 Oak Street, Forest City, N.C. 28043  
ph: 828.247.4495 fax: 828.247.4498  
P-0880



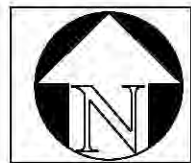
JOB NAME: TRYON INTERNATIONAL EQUESTRIAN CENTER  
AREA A

LOCATION: TRYON, N.C.

DESCRIPTION: AREA A: HOTEL AND BARN/STABLES  
PROPOSED IMPACTS

SCALE: 1" = 200'	DRAWN BY: JCW
DATE: 02/10/17	CHECKED BY: DWO
	PROJECT MGR: DWO

PROJECT NUMBER	SHEET
16120	FIGURE 7B



**Odom**  
Engineering  
PLLC

169 Oak Street, Forest City, N.C. 28043  
ph: 828.247.4495 fax: 828.247.4498  
P-0880



JOB NAME: TRYON INTERNATIONAL EQUESTRIAN CENTER  
AREA B

LOCATION: TRYON, N.C.

DESCRIPTION: AREA B: RENTAL COTTAGES

SCALE: 1" = 200'

DRAWN BY: JCW

DATE: 02/10/17

CHECKED BY: DWO

PROJECT MGR: DWO

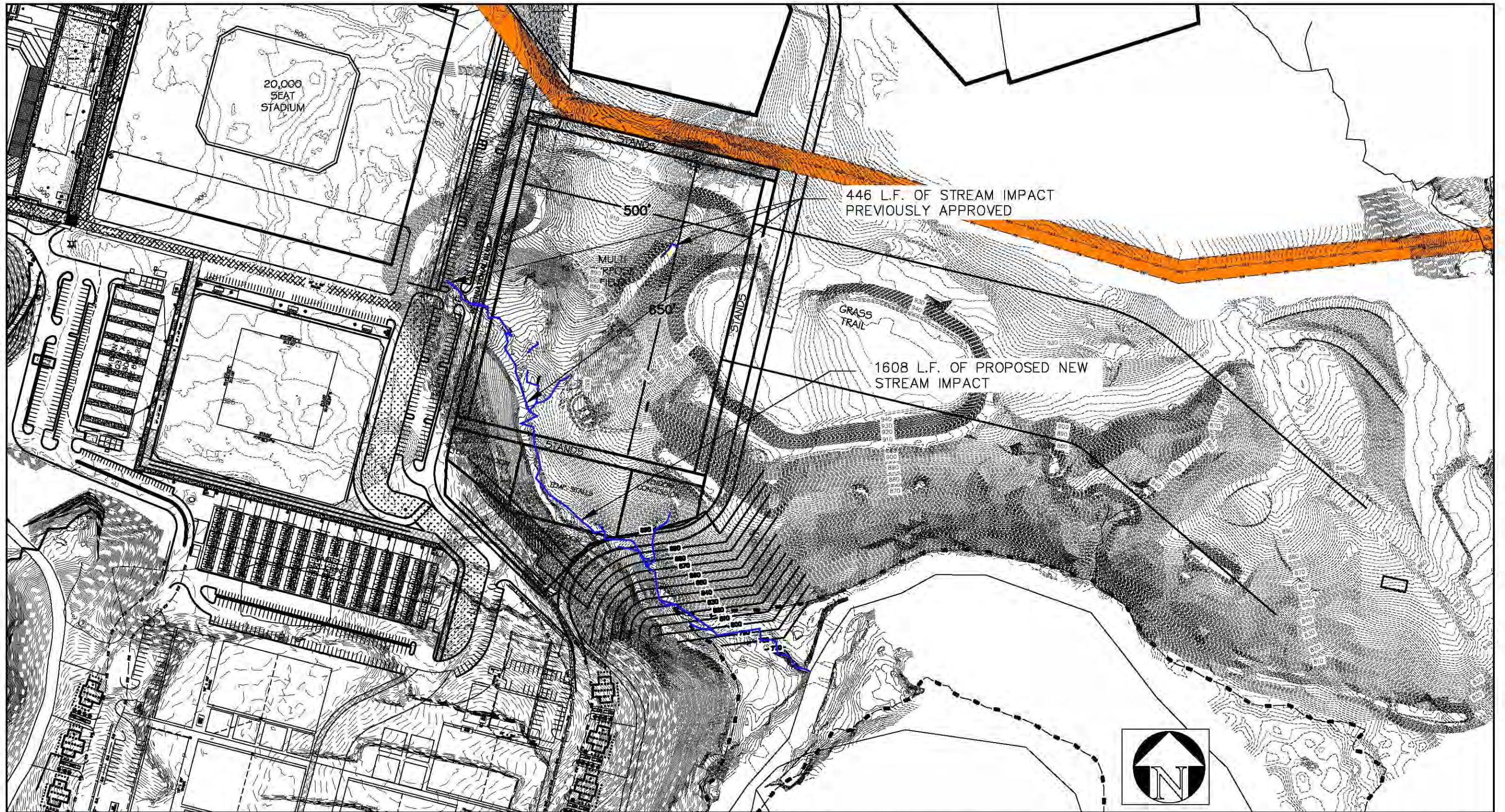
PROJECT NUMBER

SHEET

16120

FIGURE 7C





**Odom**  
Engineering  
PLLC

169 Oak Street, Forest City, N.C. 28043  
ph: 828.247.4495 fax: 828.247.4498  
P-0880



JOB NAME: TRYON INTERNATIONAL EQUESTRIAN CENTER  
AREA C

LOCATION: TRYON, N.C.

DESCRIPTION: AREA C: MULTIPURPOSE FIELD PROPOSED  
IMPACTS

SCALE: 1" = 200'

DRAWN BY: JCW

DATE: 02/10/17

CHECKED BY: DWO

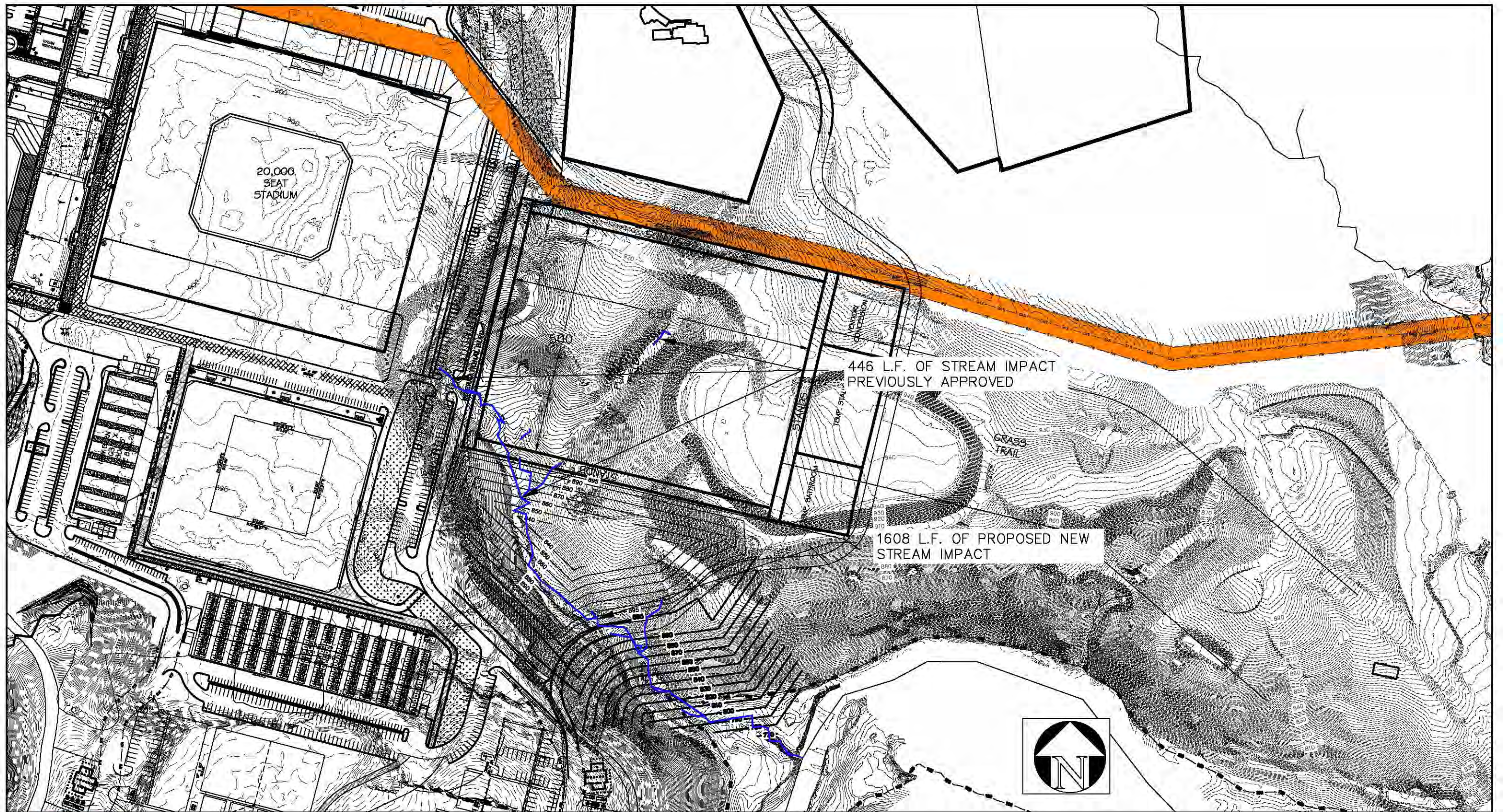
PROJECT MGR: DWO

PROJECT NUMBER

SHEET

16120

**FIGURE 7D**



**Odom**  
Engineering  
PLLC

169 Oak Street, Forest City, N.C. 28043  
ph: 828.247.4495 fax: 828.247.4498  
P-0880



JOB NAME: TRYON INTERNATIONAL EQUESTRIAN CENTER  
MULTI PURPOSE FIELD ALTERNATIVE #2

LOCATION: TRYON, N.C.

DESCRIPTION: AREA C: ALTERNATIVE CONFIGURATION FOR  
MULTIPURPOSE FIELD #2

SCALE: 1" = 200'

DATE: 02/10/17

PROJECT NUMBER

16120

DRAWN BY: JCW

CHECKED BY: DWO

PROJECT MGR: DWO

SHEET

**FIGURE 7E**