




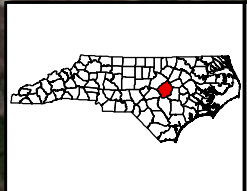


Legend

-  Proposed Roadway or Ramp
-  Stream
-  Pond
-  Wetland
-  Study Area



N

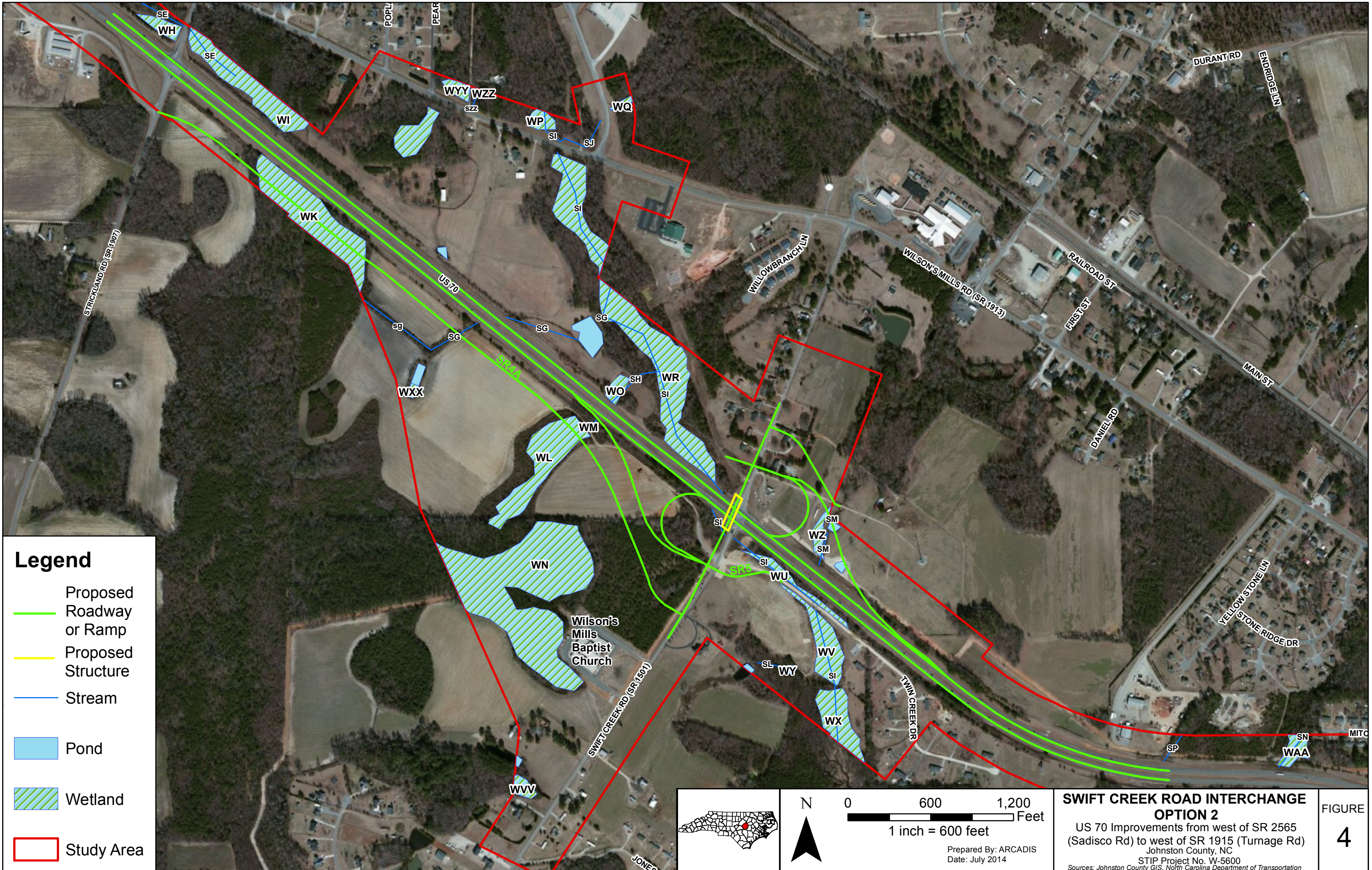
0 600 1,200 Feet

1 inch = 600 feet

Prepared By: ARCADIS
Date: August 2014

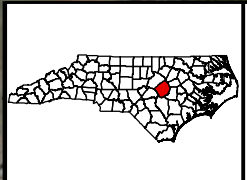
SERVICE ROADS 1, 2, 3
 US 70 Improvements from west of SR 2565 (Sadisco Rd) to west of SR 1915 (Turnage Rd)
 Johnston County, NC
 STIP Project No. W-5600
 Sources: Johnston County GIS, North Carolina Department of Transportation

FIGURE
3A



Legend

- Proposed Roadway or Ramp
- Proposed Structure
- Stream
- Pond
- Wetland
- Study Area



N

0 600 1,200
 Feet

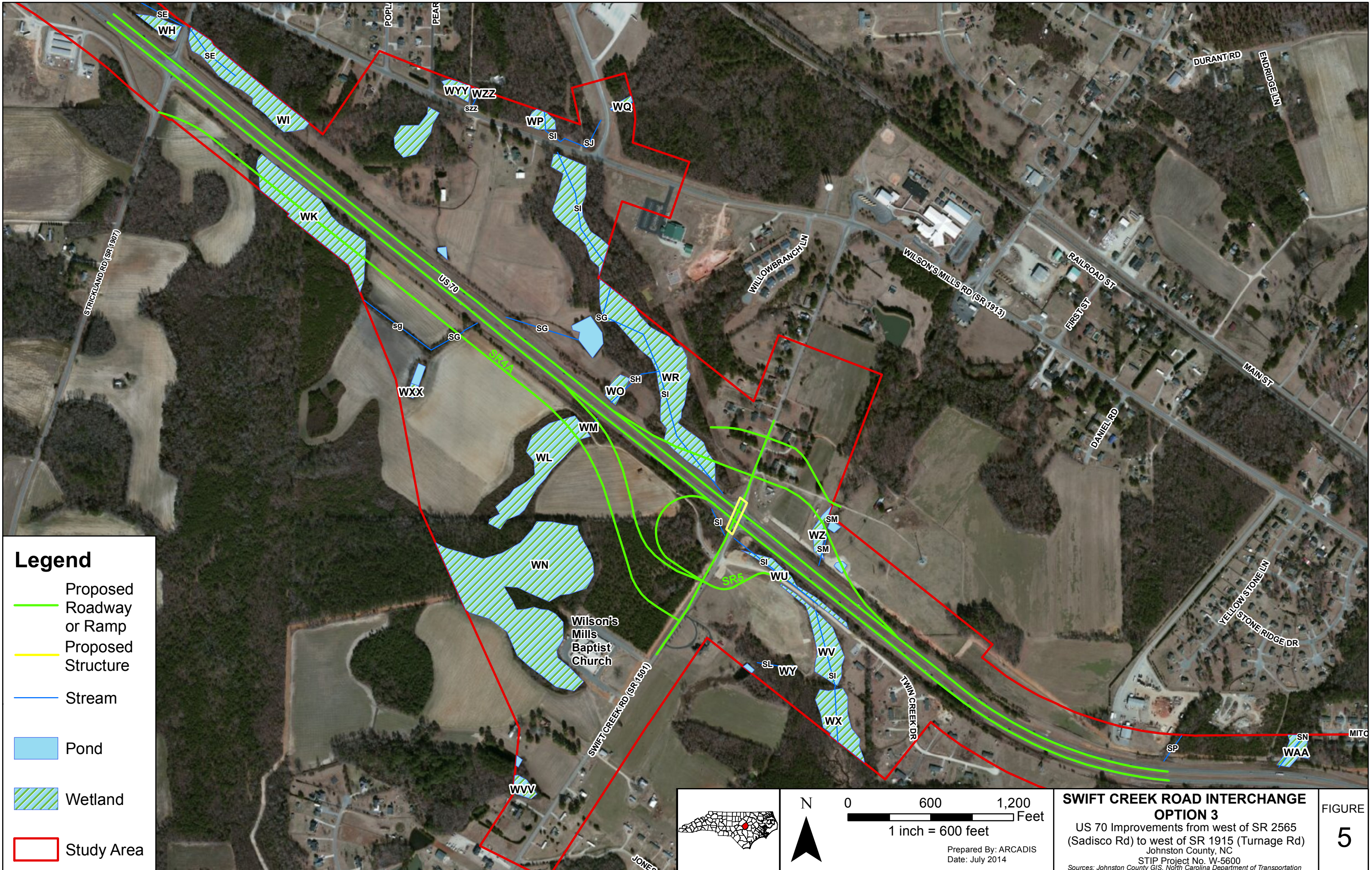
1 inch = 600 feet

Prepared By: ARCADIS
 Date: July 2014




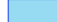


**SWIFT CREEK ROAD INTERCHANGE
 OPTION 2**

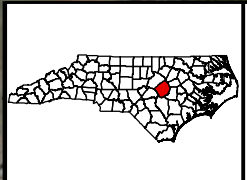
US 70 Improvements from west of SR 2565
 (Sadisco Rd) to west of SR 1915 (Turnage Rd)
 Johnston County, NC
 STIP Project No. W-5600
 Sources: Johnston County GIS, North Carolina Department of Transportation

**FIGURE
 4**



Legend

-  Proposed Roadway or Ramp
-  Proposed Structure
-  Stream
-  Pond
-  Wetland
-  Study Area



N

0 600 1,200 Feet

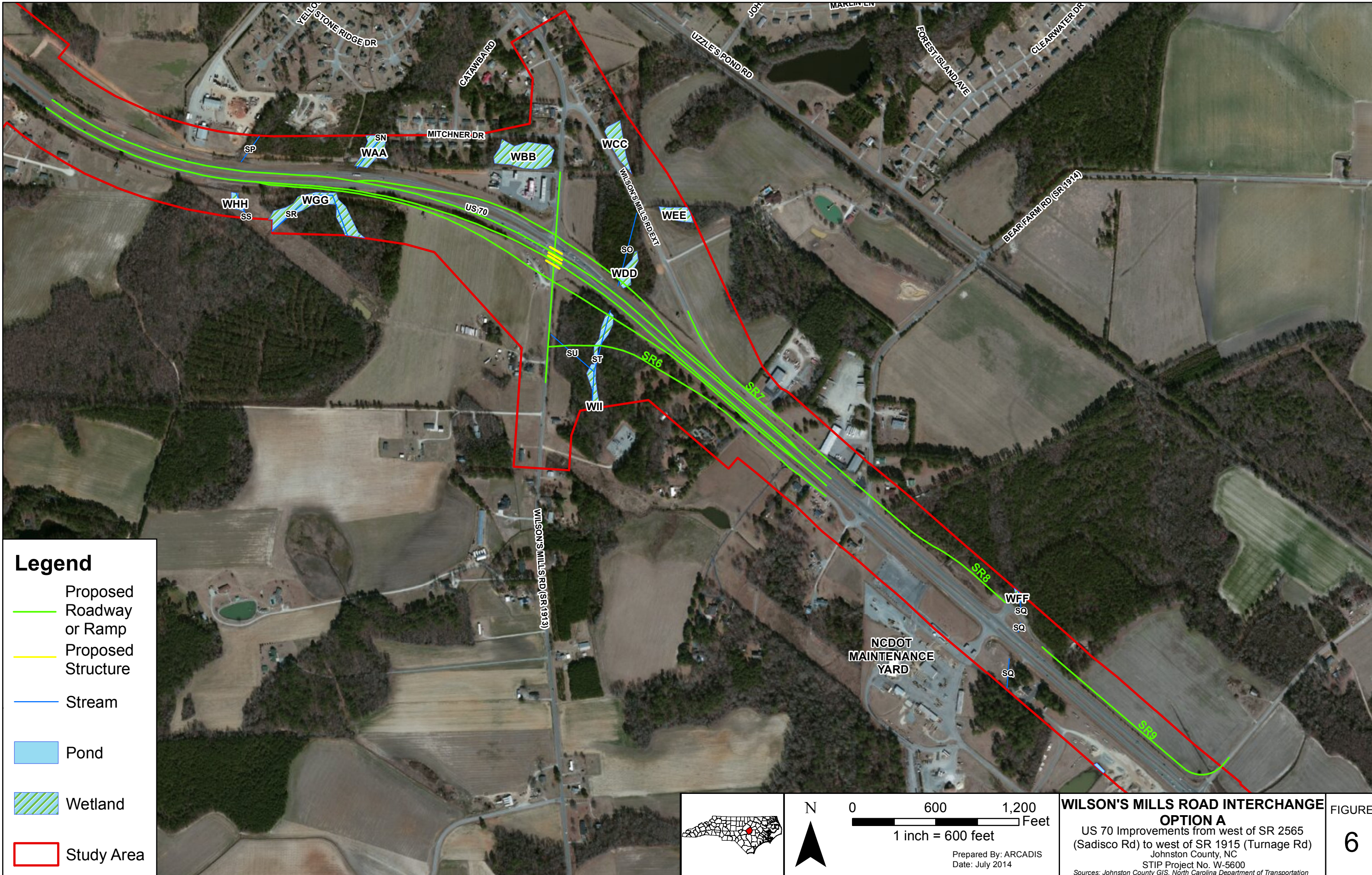
1 inch = 600 feet

Prepared By: ARCADIS
Date: July 2014

**SWIFT CREEK ROAD INTERCHANGE
OPTION 3**

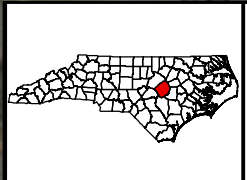
US 70 Improvements from west of SR 2565 (Sadisco Rd) to west of SR 1915 (Turnage Rd)
Johnston County, NC
STIP Project No. W-5600
Sources: Johnston County GIS, North Carolina Department of Transportation

FIGURE
5



Legend

- Proposed Roadway or Ramp
- Proposed Structure
- Stream
- Pond
- Wetland
- Study Area



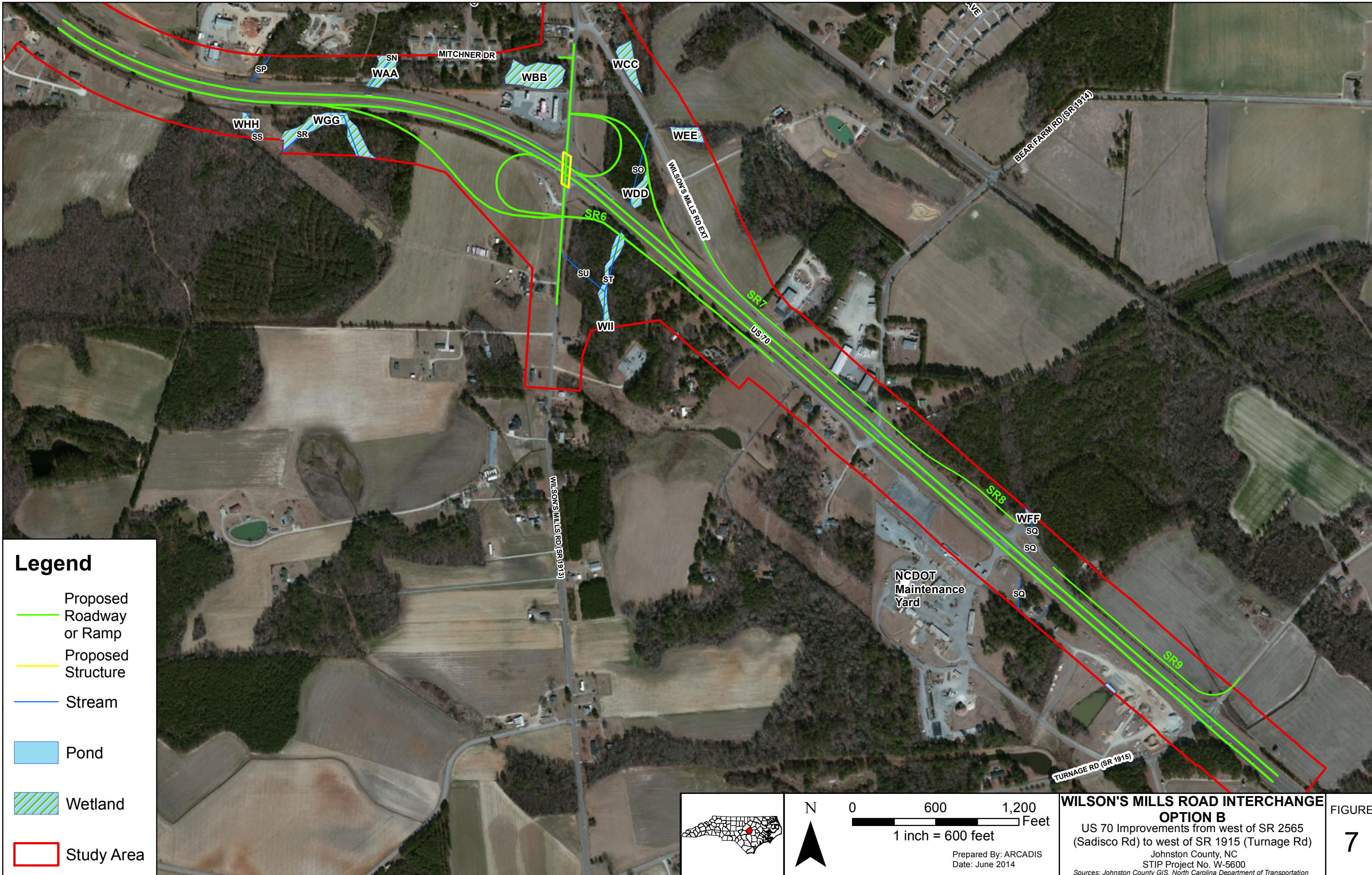
N

0 600 1,200
 Feet




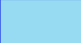


1 inch = 600 feet

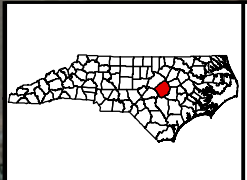
Prepared By: ARCADIS
 Date: July 2014

WILSON'S MILLS ROAD INTERCHANGE
OPTION A
 US 70 Improvements from west of SR 2565
 (Sadisco Rd) to west of SR 1915 (Turnage Rd)
 Johnston County, NC
 STIP Project No. W-5600
 Sources: Johnston County GIS, North Carolina Department of Transportation



Legend

-  Proposed Roadway or Ramp
-  Proposed Structure
-  Stream
-  Pond
-  Wetland
-  Study Area



0 600 1,200 Feet
1 inch = 600 feet

Prepared By: ARCADIS
Date: June 2014

**WILSON'S MILLS ROAD INTERCHANGE
OPTION B**
US 70 Improvements from west of SR 2565 (Sadisco Rd) to west of SR 1915 (Turnage Rd)
Johnston County, NC
STIP Project No. W-5600
Sources: Johnston County GIS, North Carolina Department of Transportation

FIGURE
7