

- Legend**

  - Study Area
  - STIP Project I-4400
  - STIP Project I-4700
  - Church
  - Cemetery
  - School
  - National Register Structure
  - Airport
  - Fire Station
  - Park Ridge Hospital
  - Environmental Site
  - Interstate
  - US Highway
  - NC Highway
  - Road
  - Railroad
  - Blue Ridge Parkway
  - Mountains-to-Sea Trail
  - Bent Creek Lake Julian
  - Greenway Preferred Alignment
  - Delineated Stream
  - 303(d) List Stream
  - Stream
  - Delineated Wetland
  - Delineated Pond
  - Water Body
  - FEMA Flood Zone
    - Zone A, 100-year Floodplain
    - Zone AE, 100-year Floodplain
    - 500-year Floodplain
  - National Register of Historic Places Property
  - Pisgah National Forest
  - Municipal Park
  - Voluntary Agriculture District
  - Property Boundary
  - County Boundary
  - Asheville
  - Biltmore Forest
  - Flat Rock
  - Fletcher
  - Hendersonville
  - Laurel Park
  - Mills River
  - Saluda

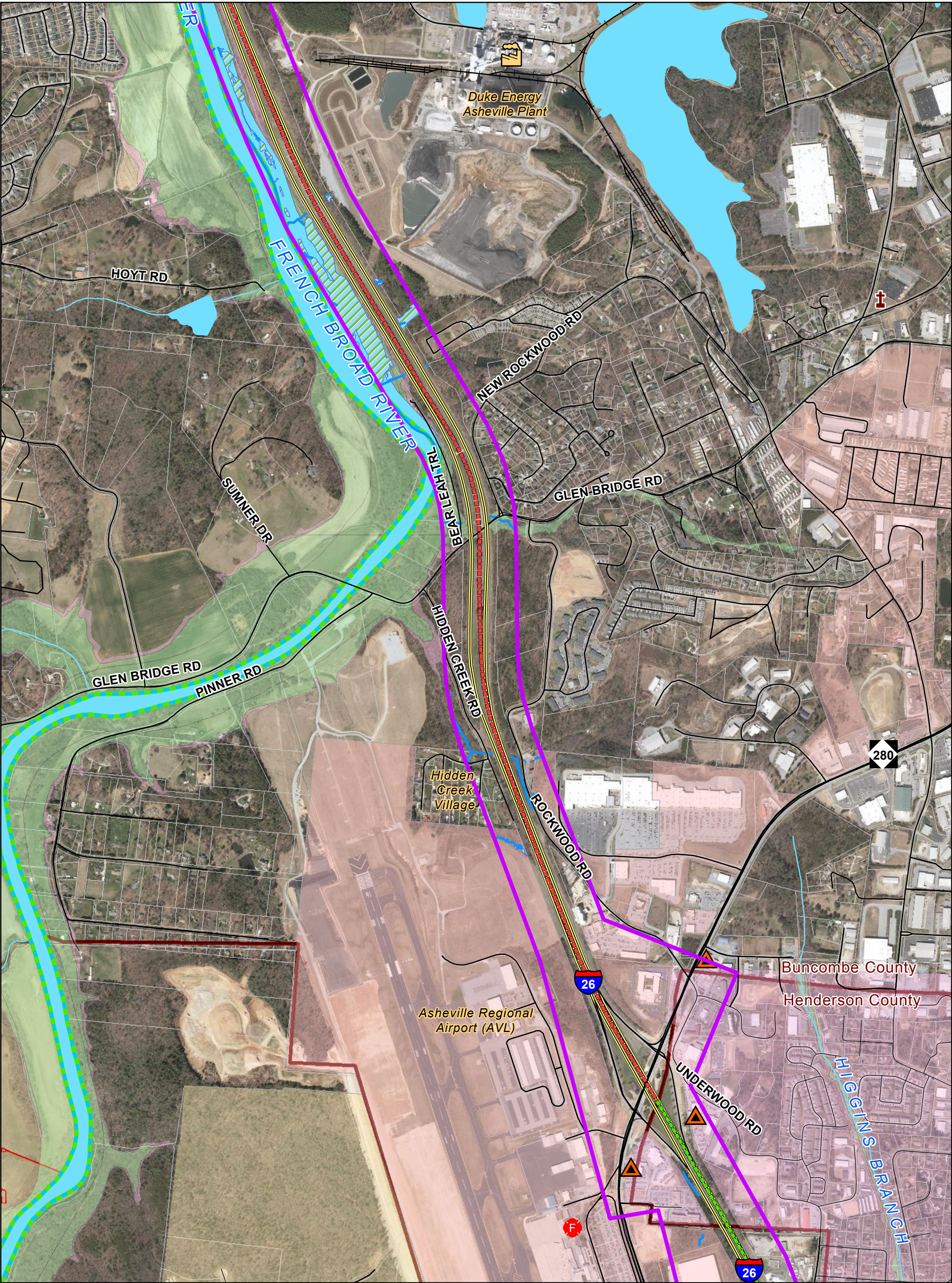
Figure 6E - Environmental Features  
STIP Project No. I-4400/I-4700  
I-26 Widening  
Buncombe and Henderson Counties

0 500 1,000 2,000  
Feet

1 inch = 1,000 feet







**Legend**

Study Area

STIP Project I-4400

STIP Project I-4700

Church

Cemetery

School

National Register Structure

Airport

Fire Station

Park Ridge Hospital

Environmental Site

Interstate

US Highway

NC Highway

Road

Railroad

Blue Ridge Parkway

Mountains-to-Sea Trail

Bent Creek Lake Julian Greenway Preferred Alignment

Delineated Stream

303(d) List Stream

Stream

Delineated Wetland

Delineated Pond

Water Body

FEMA Flood Zone

Zone A, 100-year Floodplain

Zone AE, 100-year Floodplain

500-year Floodplain

National Register of Historic Places Property

Pisgah National Forest

Municipal Park

Voluntary Agriculture District

Property Boundary

County Boundary

Asheville

Biltmore Forest

Flat Rock

Fletcher

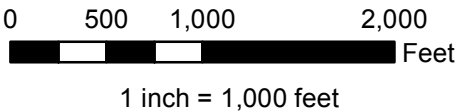
Hendersonville

Laurel Park

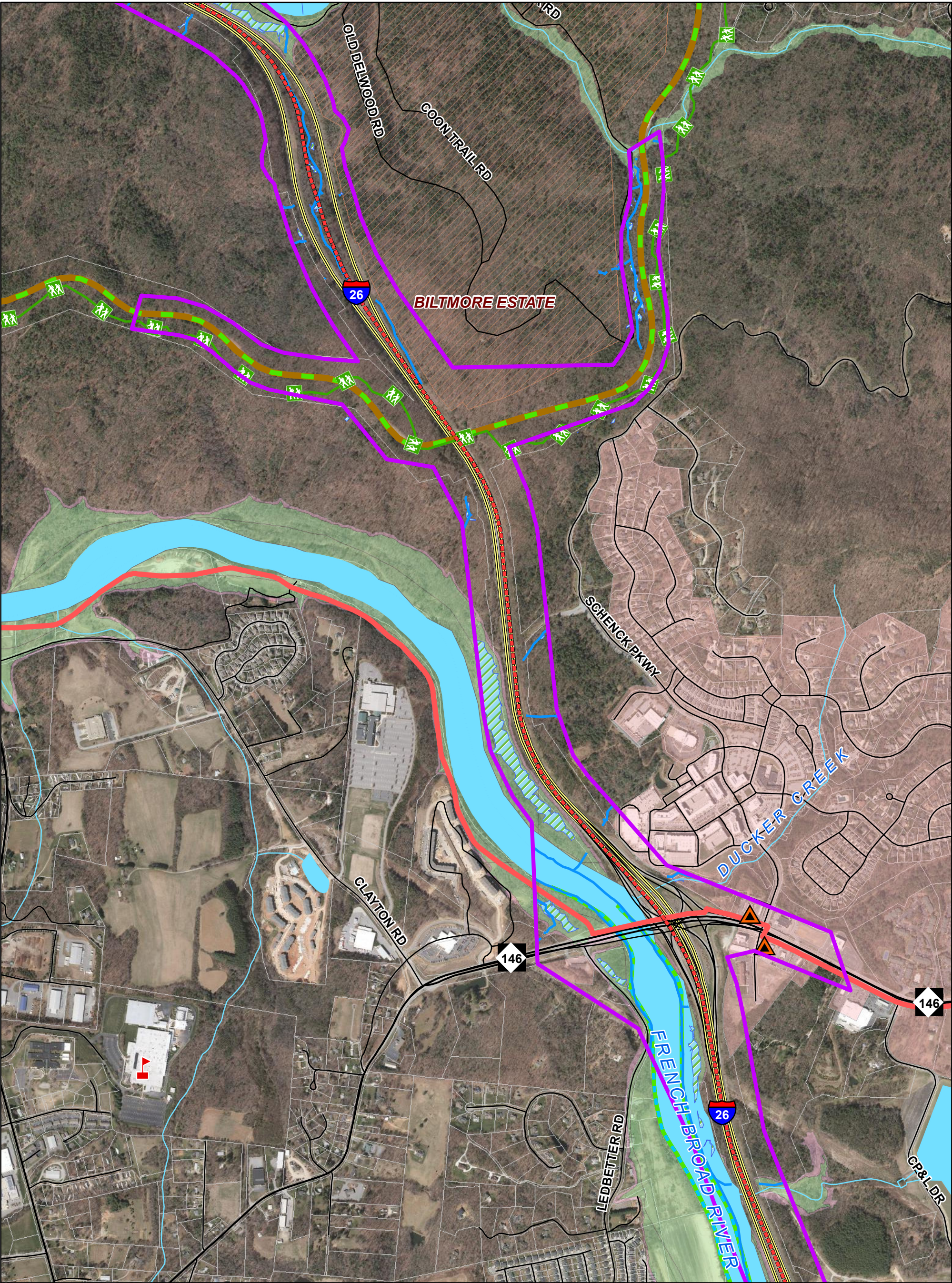
Mills River

Saluda

**Figure 6F - Environmental Features**  
**STIP Project No. I-4400/I-4700**  
**I-26 Widening**  
**Buncombe and Henderson Counties**



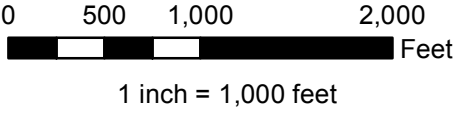




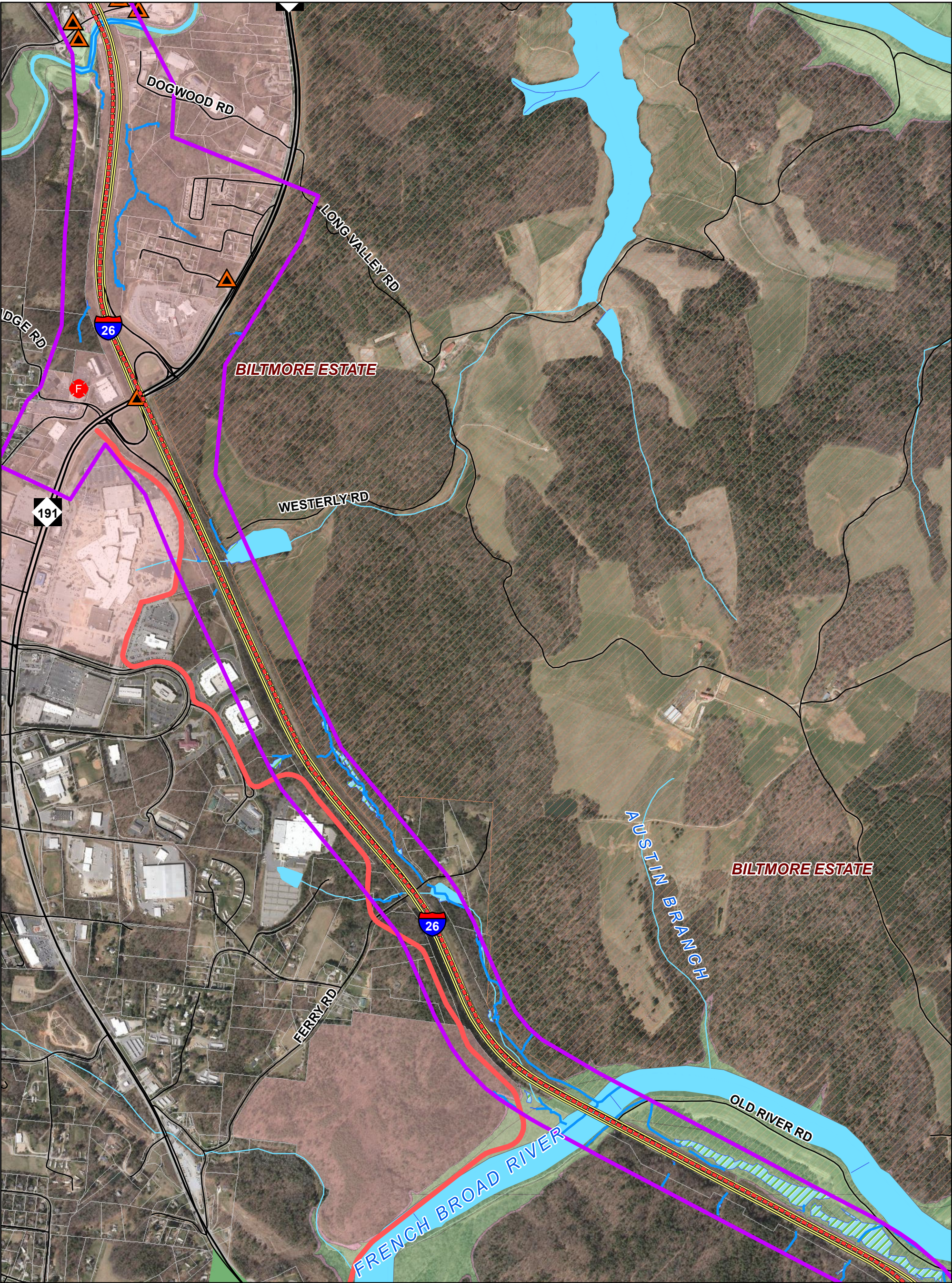
Legend

- |                             |                     |   |                                |
|-----------------------------|---------------------|---|--------------------------------|
| Study Area                  | Fire Station        | Bent Creek Lake Julian                        | Pisgah National Forest         |
| STIP Project I-4400         | Park Ridge Hospital | Delineated Stream                             | Municipal Park                 |
| STIP Project I-4700         | Environmental Site  | 303(d) List Stream                            | Voluntary Agriculture District |
| Church                      | Interstate          | Stream  | Property Boundary              |
| Cemetery                    | US Highway          | Delineated Wetland                            | County Boundary                |
| School                      | NC Highway          | Delineated Pond                               | Asheville                      |
| National Register Structure | Road                | Water Body                                    | Biltmore Forest                |
| Airport                     | Railroad            | FEMA Flood Zone                               | Flat Rock                      |
| Mountains-to-Sea Trail      | Blue Ridge Parkway  | Zone A, 100-year Floodplain                   | Fletcher                       |
|                             |                     | Zone AE, 100-year Floodplain                  | Hendersonville                 |
|                             |                     | 500-year Floodplain                           | Laurel Park                    |
|                             |                     | National Register of Historic Places Property | Mills River                    |
|                             |                     |   | Saluda                         |

Figure 6G - Environmental Features  
STIP Project No. I-4400/I-4700  
I-26 Widening  
Buncombe and Henderson Counties



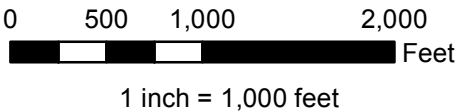




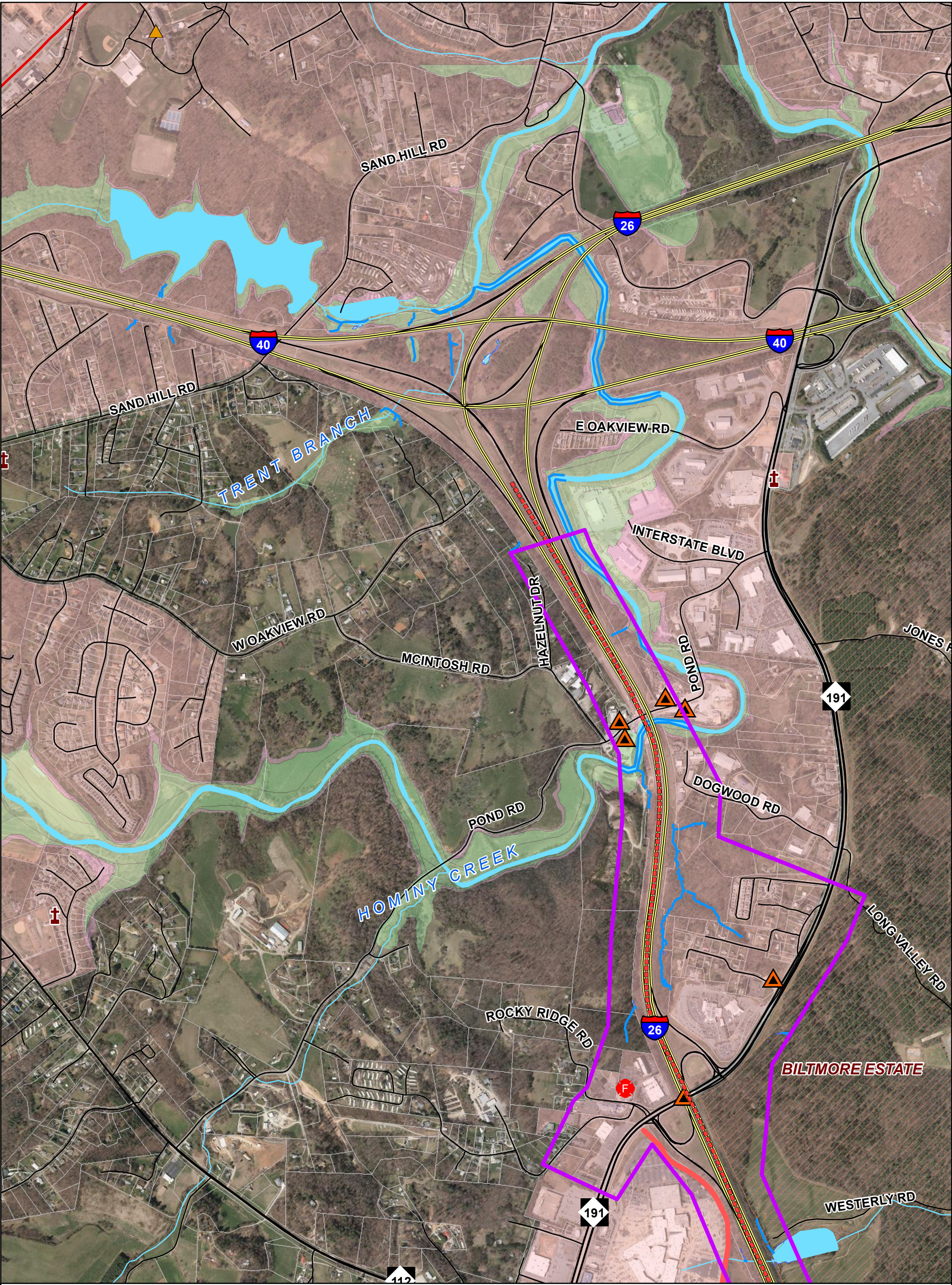
- Legend**

  - Study Area
  - STIP Project I-4400
  - STIP Project I-4700
  - Church
  - Cemetery
  - School
  - National Register Structure
  - Airport
  - Fire Station
  - Park Ridge Hospital
  - Environmental Site
  - Interstate
  - US Highway
  - NC Highway
  - Road
  - Railroad
  - Blue Ridge Parkway
  - Mountains-to-Sea Trail
  - Bent Creek Lake Julian
  - Greenway Preferred Alignment
  - Delineated Stream
  - 303(d) List Stream
  - Stream
  - Delineated Wetland
  - Delineated Pond
  - Water Body
  - FEMA Flood Zone
    - Zone A, 100-year Floodplain
    - Zone AE, 100-year Floodplain
    - 500-year Floodplain
  - National Register of Historic Places Property
  - Pisgah National Forest
  - Municipal Park
  - Voluntary Agriculture District
  - Property Boundary
  - County Boundary
  - Asheville
  - Biltmore Forest
  - Flat Rock
  - Fletcher
  - Hendersonville
  - Laurel Park
  - Mills River
  - Saluda

**Figure 6H - Environmental Features**  
**STIP Project No. I-4400/I-4700**  
**I-26 Widening**  
**Buncombe and Henderson Counties**







Legend

- Study Area

STIP Project I-4400

STIP Project I-4700

Church

Cemetery

School

National Register Structure

Airport

Fire Station

Park Ridge Hospital

Environmental Site

Interstate

US Highway

NC Highway

Road

Railroad

Blue Ridge Parkway

Mountains-to-Sea Trail

Bent Creek Lake Julian

Greenway Preferred Alignment

Delineated Stream

303(d) List Stream

Stream

Delineated Wetland

Delineated Pond

Water Body

FEMA Flood Zone

Zone A, 100-year Floodplain

Zone AE, 100-year Floodplain

500-year Floodplain

National Register of Historic Places Property

Pisgah National Forest

Municipal Park

Voluntary Agriculture District

Property Boundary

County Boundary

Asheville

Biltmore Forest

Flat Rock

Fletcher

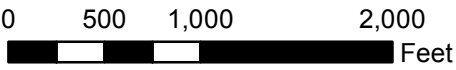
Hendersonville

Laurel Park

Mills River

Saluda

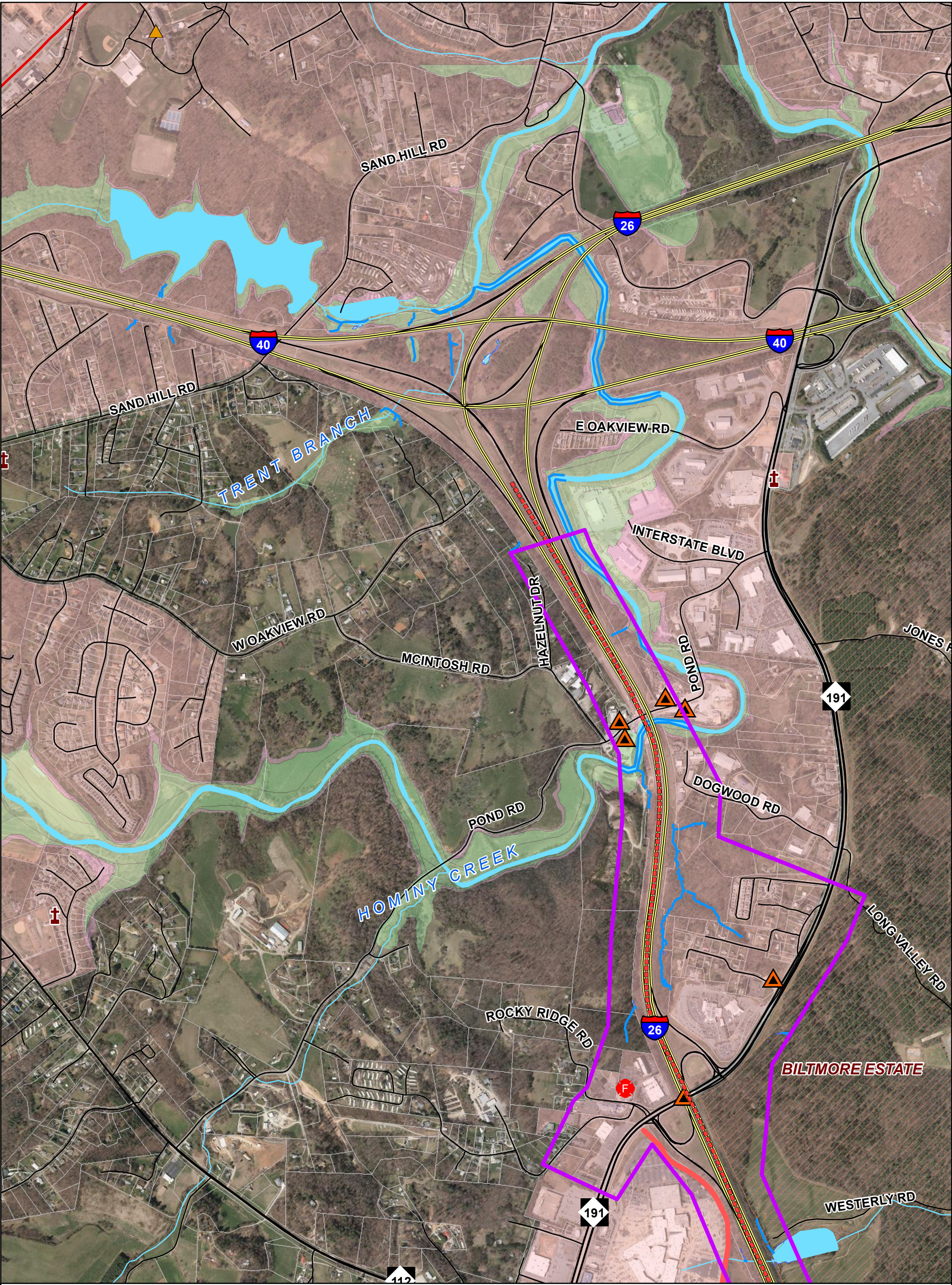
Figure 6I - Environmental Features  
STIP Project No. I-4400/I-4700  
I-26 Widening  
Buncombe and Henderson Counties



1 inch = 1,000 feet







Legend

- |                             |                     |   |                                |
|-----------------------------|---------------------|---|--------------------------------|
| Study Area                  | Fire Station        | Bent Creek Lake Julian Greenway Preferred Alignment | Pisgah National Forest         |
| STIP Project I-4400         | Park Ridge Hospital | Delineated Stream                                   | Municipal Park                 |
| STIP Project I-4700         | Environmental Site  | 303(d) List Stream                                  | Voluntary Agriculture District |
| Church                      | Interstate          | Stream  | Property Boundary              |
| Cemetery                    | US Highway          | Delineated Wetland                                  | County Boundary                |
| School                      | NC Highway          | Delineated Pond                                     | Asheville                      |
| National Register Structure | Road                | Water Body  | Biltmore Forest                |
| Airport                     | Railroad            | FEMA Flood Zone                                     | Flat Rock                      |
| Mountains-to-Sea Trail      | Blue Ridge Parkway  | Zone A, 100-year Floodplain                         | Fletcher                       |
|                             |                     | Zone AE, 100-year Floodplain                        | Hendersonville                 |
|                             |                     | 500-year Floodplain                                 | Laurel Park                    |
|                             |                     | National Register of Historic Places Property       | Mills River                    |
|                             |                     |   | Saluda                         |

Figure 6I - Environmental Features  
STIP Project No. I-4400/I-4700  
I-26 Widening  
Buncombe and Henderson Counties

0 500 1,000 2,000  
Feet

1 inch = 1,000 feet

