

RECEIVED

Brickhaven Mine (+/- 332 AC)

FEB 18 2015

RALEIGH REGULATORY
FIELD OFFICE

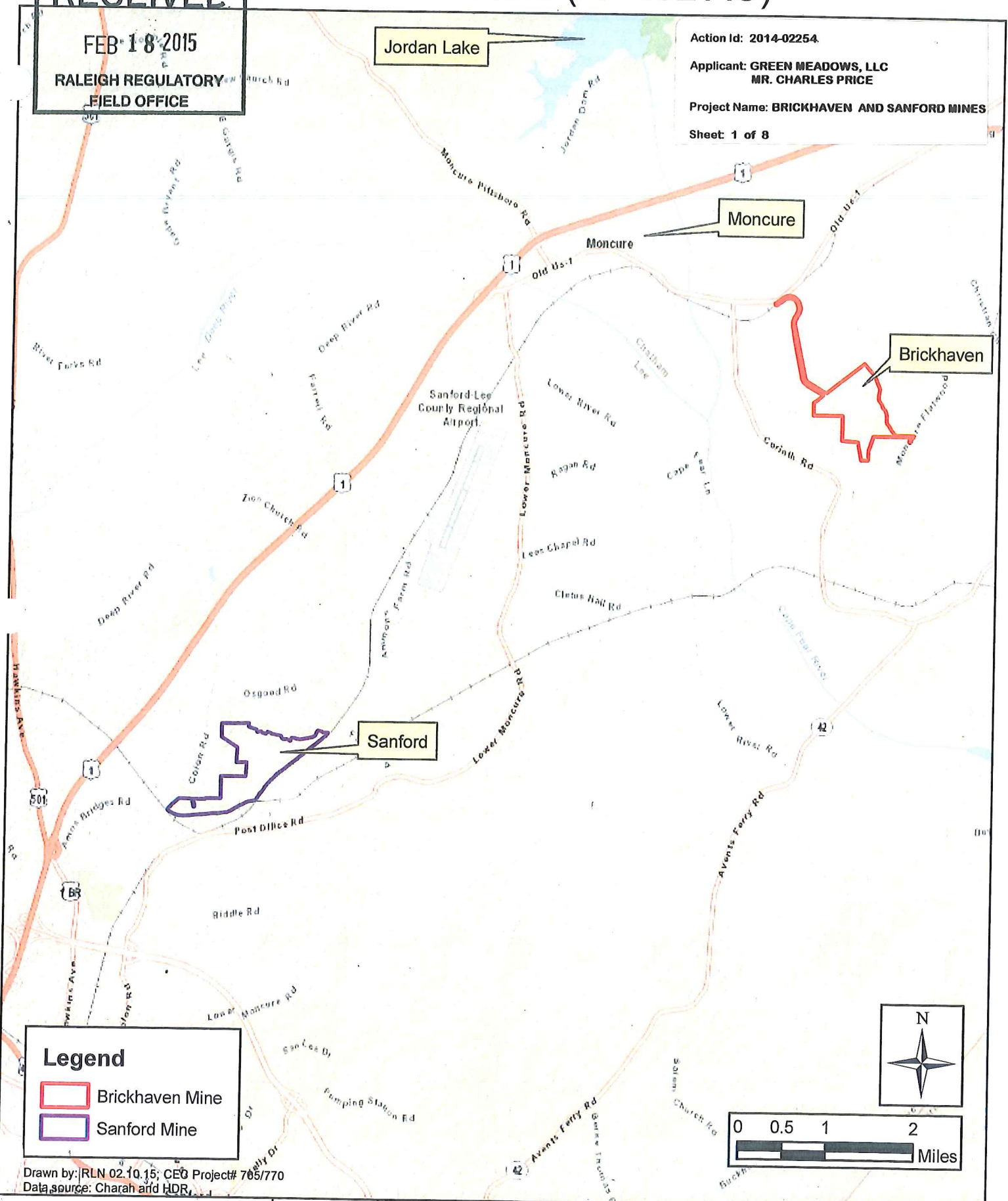
Jordan Lake

Action Id: 2014-02254

Applicant: GREEN MEADOWS, LLC
MR. CHARLES PRICE

Project Name: BRICKHAVEN AND SANFORD MINES

Sheet: 1 of 8



Legend

- Brickhaven Mine
- Sanford Mine

Drawn by: RLN 02.10.15; CEO Project# 705/770
Data source: Charah and HDR

Chatham County,
North Carolina

ClearWater

224 South Grove Street, Suite F
Hendersonville, North Carolina 28792

Site Vicinity
Figure 1b

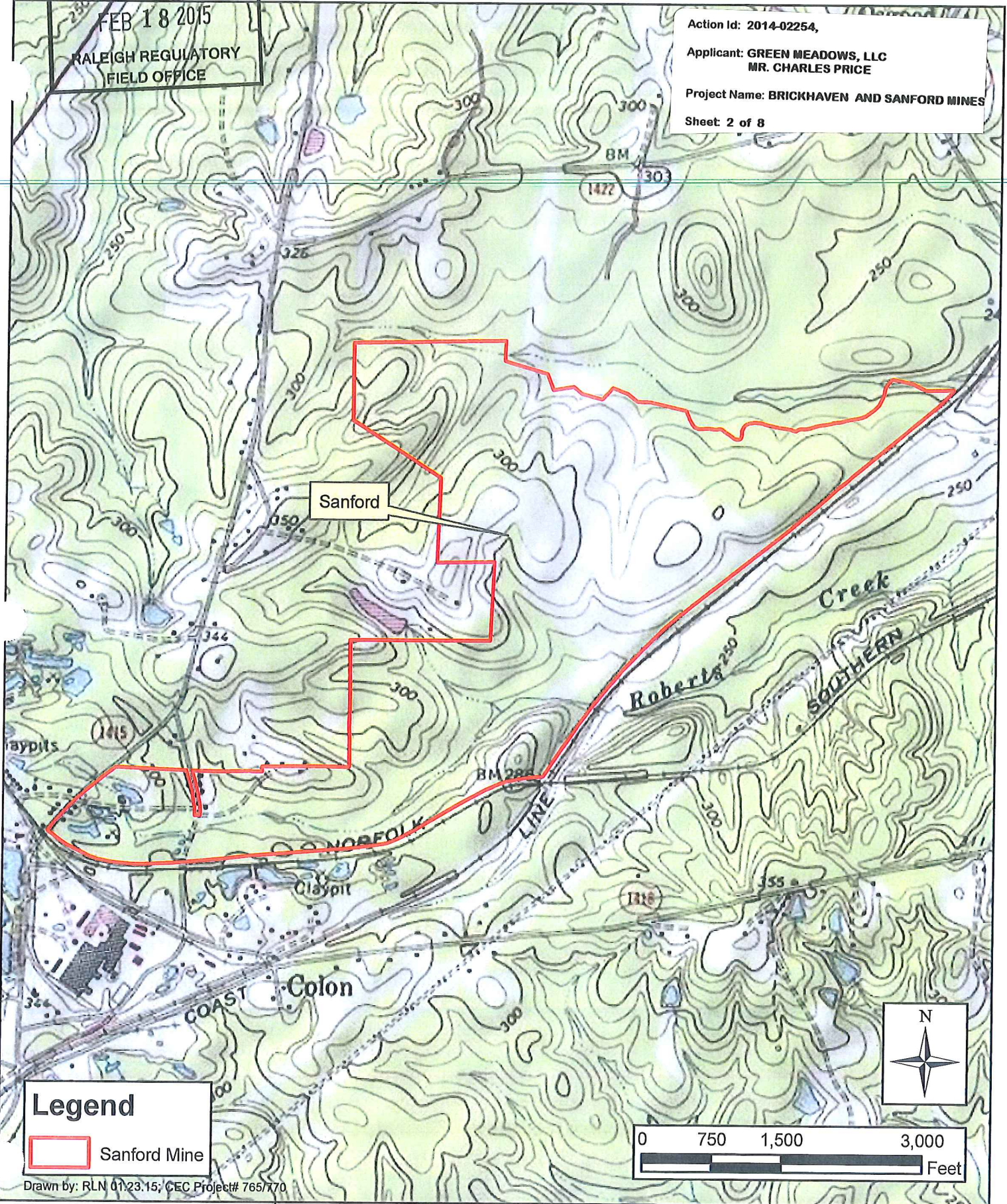
RECEIVED

Sanford Mine (+/- 425 AC)

FEB 18 2015

RALEIGH REGULATORY
FIELD OFFICE

Action Id: 2014-02254,
Applicant: GREEN MEADOWS, LLC
MR. CHARLES PRICE
Project Name: BRICKHAVEN AND SANFORD MINES
Sheet: 2 of 8



Legend
[Red Outline] Sanford Mine

Drawn by: RLN 01/23/15; CEC Project# 765/770

Lee County,
North Carolina

ClearWater

224 South Grove Street, Suite F
Hendersonville, North Carolina 28792

USGS Topographic Map
Colon Quad
Figure 2a

RECEIVED

Brickhaven Mine (+/- 332 AC)

FEB 18 2015

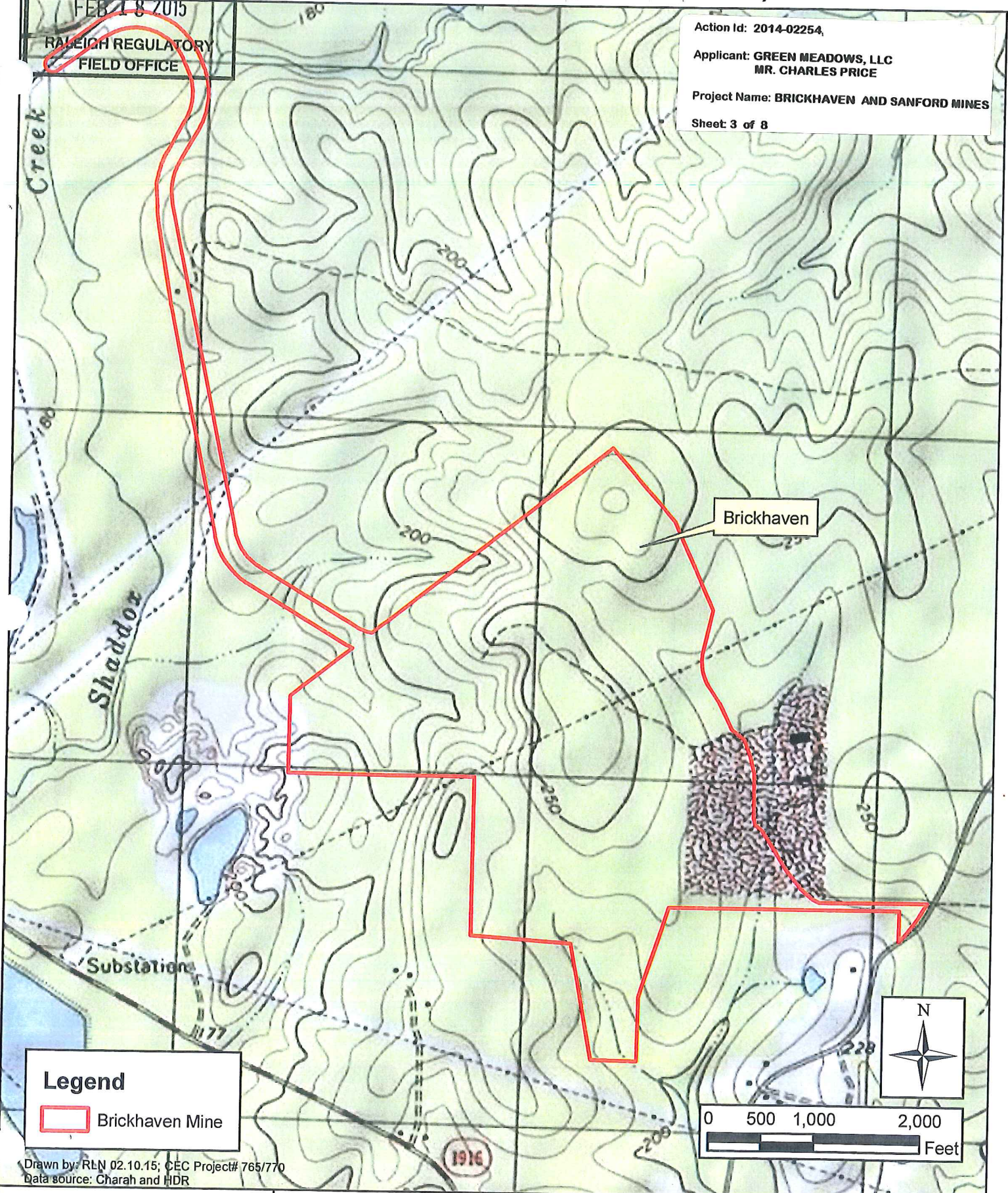
RALEIGH REGULATORY
FIELD OFFICE

Action Id: 2014-02254,

Applicant: GREEN MEADOWS, LLC
MR. CHARLES PRICE

Project Name: BRICKHAVEN AND SANFORD MINES

Sheet 3 of 8



Legend

Brickhaven Mine

Drawn by: RLN 02.10.15; CEC Project# 765/770
Data source: Charah and HDR

Chatham County,
North Carolina

ClearWater

224 South Grove Street, Suite F
Hendersonville, North Carolina 28792

USGS Topographic Map
Moncure Quad
Figure 2b

RECEIVED

FEB 18 2015

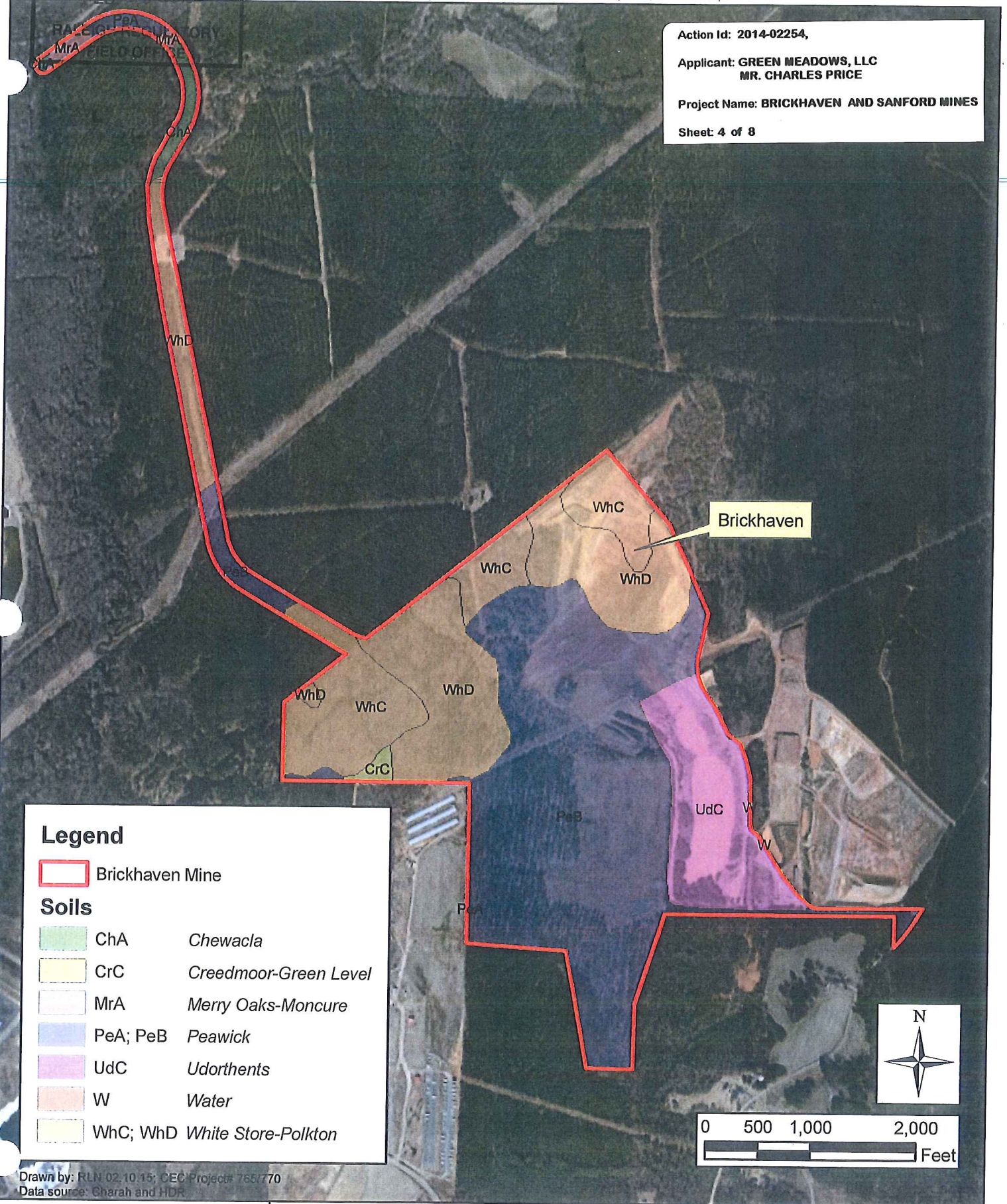
Brickhaven Mine (+/- 332 AC)

Action Id: 2014-02254,

Applicant: GREEN MEADOWS, LLC
MR. CHARLES PRICE

Project Name: BRICKHAVEN AND SANFORD MINES

Sheet: 4 of 8



Legend

Brickhaven Mine

Soils

- ChA *Chewacla*
- CrC *Creedmoor-Green Level*
- MrA *Merry Oaks-Moncure*
- PeA; PeB *Peawick*
- UdC *Udorthents*
- W *Water*
- WhC; WhD *White Store-Polkton*

Drawn by: RLN 02.10.15; CEC Project# 765/770
Data source: Charah and HDR

Chatham County,
North Carolina

ClearWater

224 South Grove Street, Suite F
Hendersonville, North Carolina 28792

USDA Soils Map
Figure 3b

Sanford (Colon) Mine - Permit Map

Action Id: 2014-02254

Applicant: GREEN MEADOWS, LLC
MR. CHARLES PRICE

Project Name: BRICKHAVEN AND SANFORD MINES

Sheet: 5 of 8

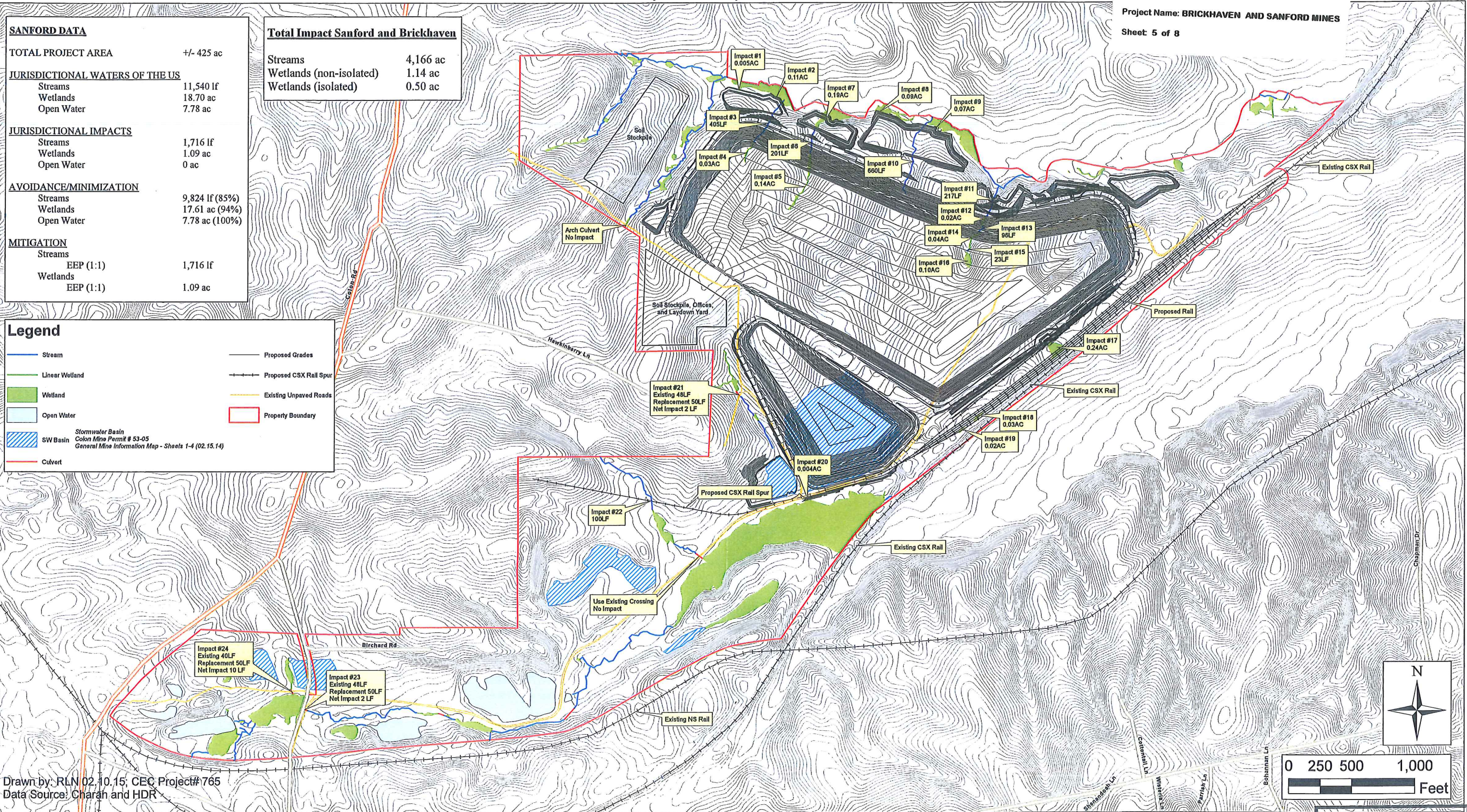
SANFORD DATA	
TOTAL PROJECT AREA	+/- 425 ac
JURISDICTIONAL WATERS OF THE US	
Streams	11,540 lf
Wetlands	18.70 ac
Open Water	7.78 ac
JURISDICTIONAL IMPACTS	
Streams	1,716 lf
Wetlands	1.09 ac
Open Water	0 ac
AVOIDANCE/MINIMIZATION	
Streams	9,824 lf (85%)
Wetlands	17.61 ac (94%)
Open Water	7.78 ac (100%)
MITIGATION	
Streams	
EEP (1:1)	1,716 lf
Wetlands	
EEP (1:1)	1.09 ac

Total Impact Sanford and Brickhaven	
Streams	4,166 ac
Wetlands (non-isolated)	1.14 ac
Wetlands (isolated)	0.50 ac

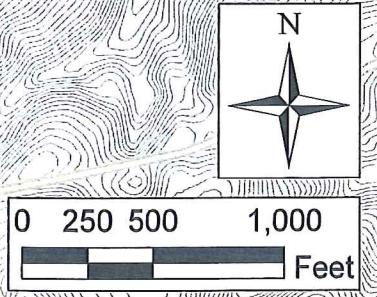
Legend

- Stream
- Linear Wetland
- Wetland
- Open Water
- Stormwater Basin
- SW Basin
- Culvert
- Proposed Grades
- Proposed CSX Rail Spur
- Existing Unpaved Roads
- Property Boundary

Stormwater Basin
Colon Mine Permit # 53-05
General Mine Information Map - Sheets 1-4 (02.15.14)



Drawn by: RLN 02.10.15; CEC Project# 765
Data Source: Charah and HDR



Lee County,
North Carolina

ClearWater
224 South Grove Street, Suite F
Hendersonville, North Carolina 28792

Site Plan and Impact Map
Figure 4a

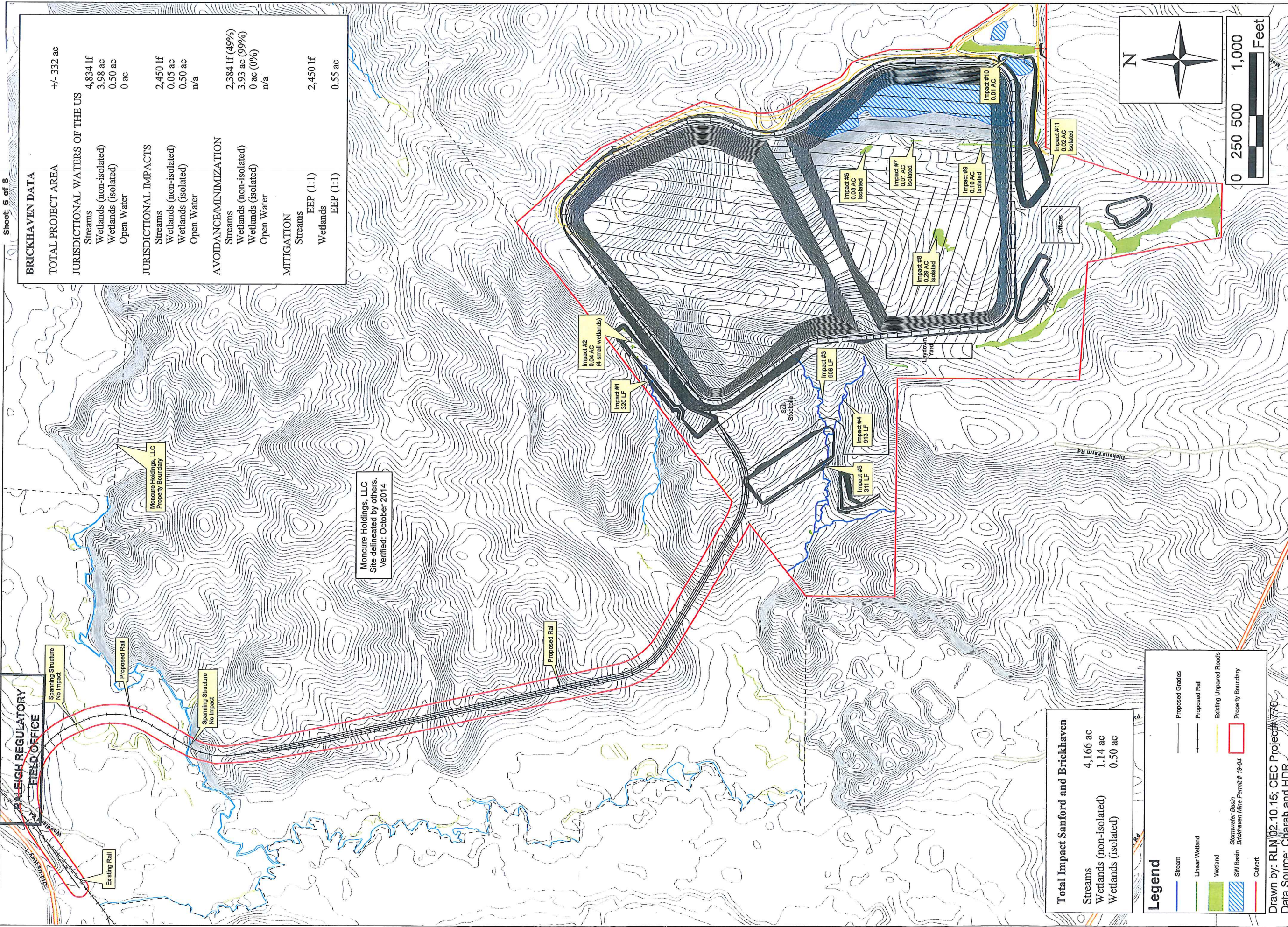
RECEIVED
FEB 18 2015
RALEIGH REGULATORY
FIELD OFFICE

Brickhaven Mine -Permit Map

RECEIVED

FEB 18 2015

RALEIGH REGULATORY
FIELD OFFICE



BRICKHAVEN DATA	
TOTAL PROJECT AREA	+/- 332 ac
JURISDICTIONAL WATERS OF THE US	
Streams	4,834 lf
Wetlands (non-isolated)	3.98 ac
Wetlands (isolated)	0.50 ac
Open Water	0 ac
JURISDICTIONAL IMPACTS	
Streams	2,450 lf
Wetlands (non-isolated)	0.05 ac
Wetlands (isolated)	0.50 ac
Open Water	n/a
AVOIDANCE/MINIMIZATION	
Streams	2,384 lf (49%)
Wetlands (non-isolated)	3.93 ac (99%)
Wetlands (isolated)	0 ac (0%)
Open Water	n/a
MITIGATION	
Streams	2,450 lf
Wetlands	EEP (1:1)
Wetlands	EEP (1:1)

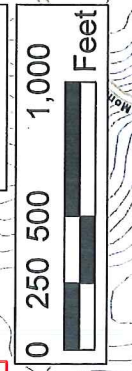
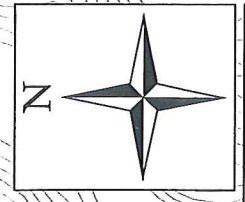
Total Impact Sanford and Brickhaven

Streams	4,166 ac
Wetlands (non-isolated)	1.14 ac
Wetlands (isolated)	0.50 ac

Legend

Stream	Proposed Grades
Linear Wetland	Proposed Rail
Wetland	Existing Unpaved Roads
Stormwater Basin Brickhaven Mine Permit # 19-04	Property Boundary
SW Basin	Culvert

Drawn by: RLN 02.10.15; CEC Project# 770
Data Source: Charah and HDR



Chatham County,
North Carolina

ClearWater

224 South Grove Street, Suite F
Hendersonville, North Carolina 28792

Site Plan and Impact Map
Figure 4b

RECEIVED

Sanford Mine (+/- 425 AC)

FEB 18 2015

RALEIGH REGULATORY
FIELD OFFICE

Action Id: 2014-02254

Applicant: GREEN MEADOWS, LLC
MR. CHARLES PRICE

Project Name: BRICKHAVEN AND SANFORD MINES

Sheet 7 of 8

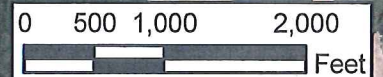
Sanford

Surveyed 100-Year Floodplain

FEMA 100-Year Floodplain

Legend

-  Sanford Mine
- 100-Year Floodplain (FEMA)
-  100-Year Floodplain (As Surveyed)



Drawn by: RLN 01.26.16; CEC Project#: 7651776
Data source: CH2M and HDR

Lee County,
North Carolina

ClearWater

224 South Grove Street, Suite F
Hendersonville, North Carolina 28792

FEMA 100-Year
Floodplain Map
Figure 5a

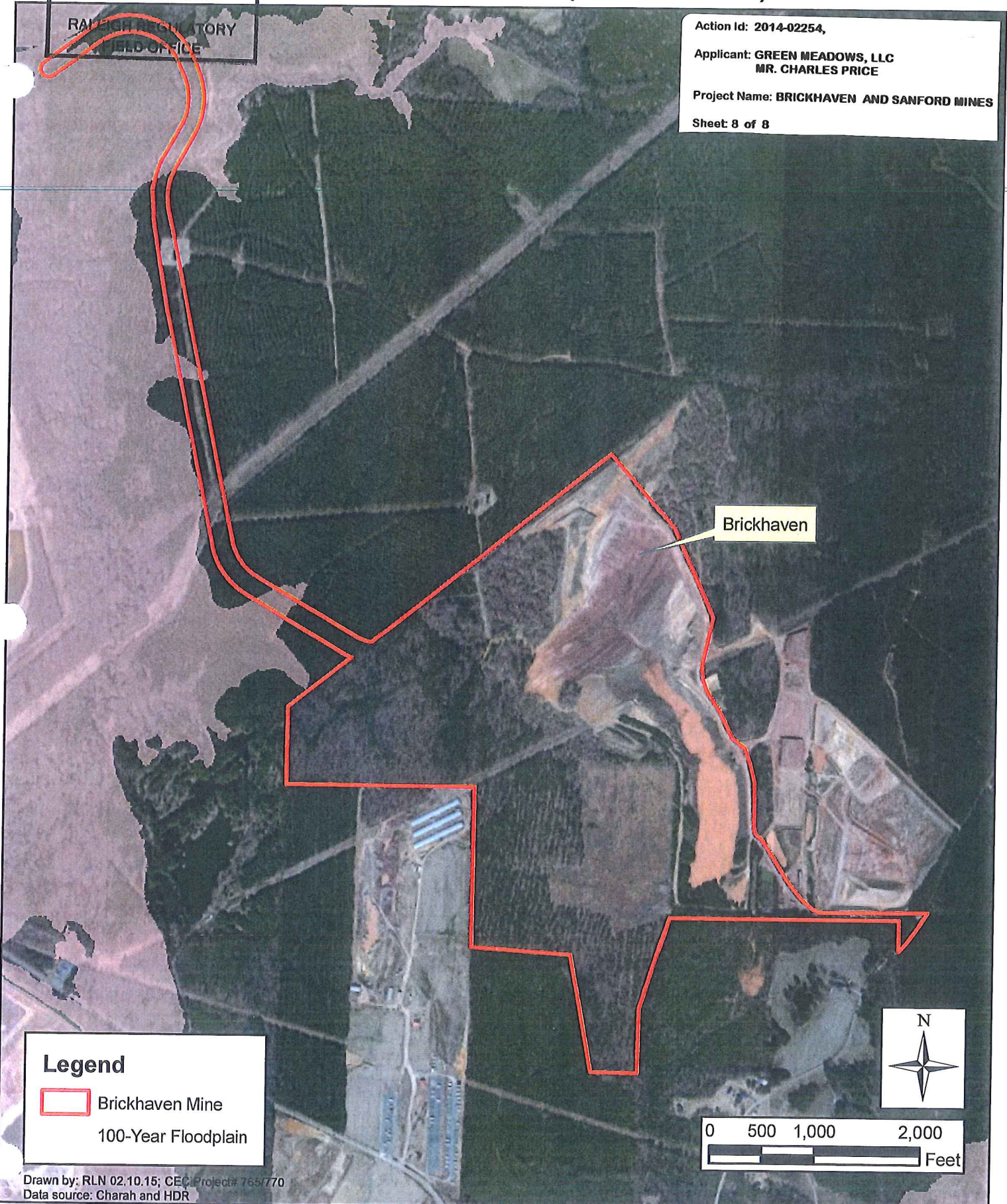
RECEIVED

FEB 18 2015

Brickhaven Mine (+/- 332 AC)

RALEIGH REGULATORY
FIELD OFFICE

Action Id: 2014-02254,
Applicant: GREEN MEADOWS, LLC
MR. CHARLES PRICE
Project Name: BRICKHAVEN AND SANFORD MINES
Sheet 8 of 8



Legend

- Brickhaven Mine
- 100-Year Floodplain

Drawn by: RLN 02.10.15; CEC Project# 765/770
Data source: Charah and HDR

Chatham County,
North Carolina



224 South Grove Street, Suite F
Hendersonville, North Carolina 28792

FEMA 100-Year
Floodplain Map
Figure 5b