

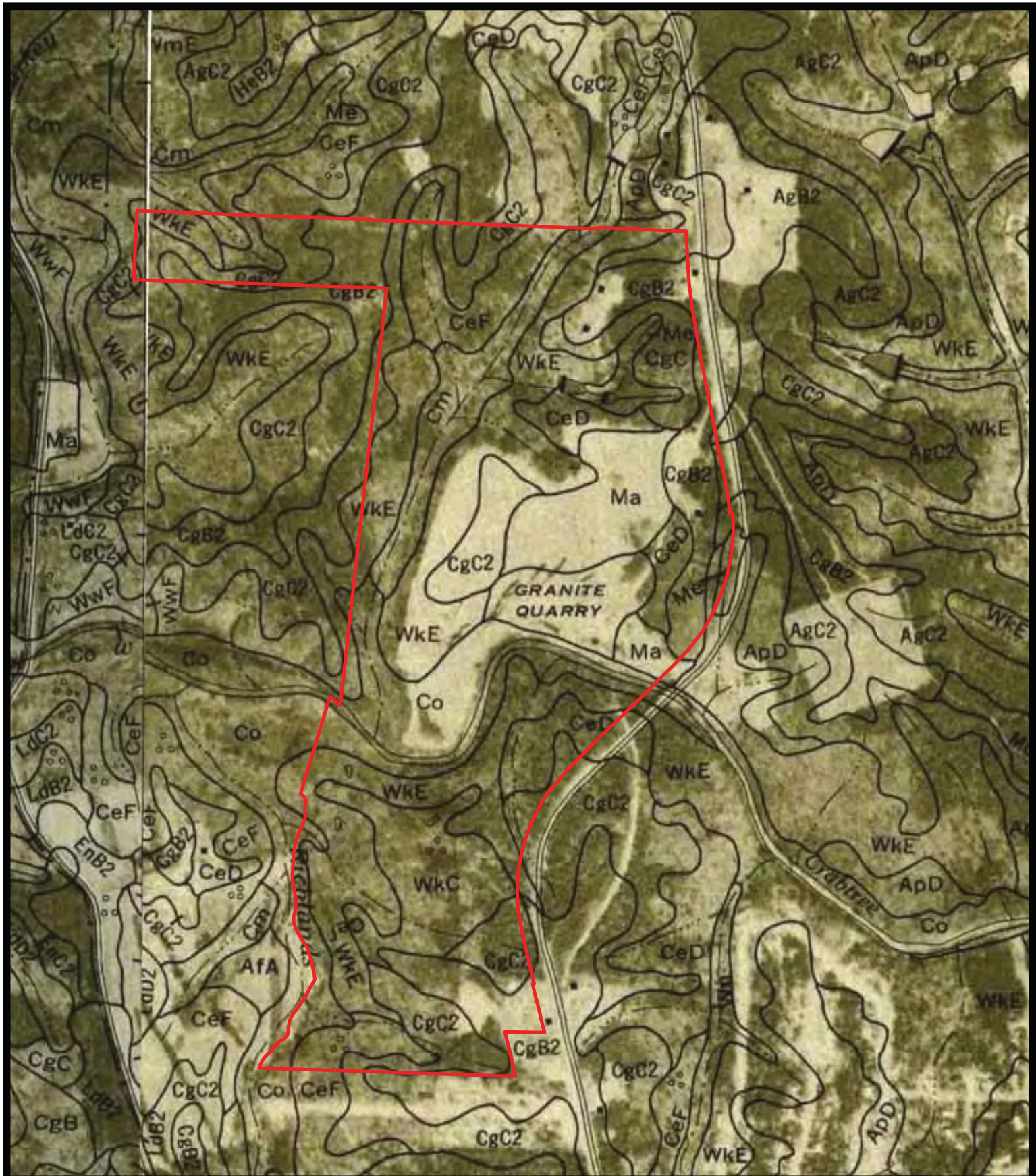
Project Number:	11282
Project Manager:	PKS
Scale:	1" = 750'
Date:	6/11/15

Map Title:
Figure 2 - Topographic Map
 Hanson Crabtree Quarry
 Wake County, NC

Source: Wake County GIS
 2013 USGS Raleigh West quad

0 750 1,500
 Feet

S&EC
Soil & Environmental Consultants, PA
 8412 Falls of Neuse Road, Suite 104, Raleigh, NC 27615 • Phone: (919) 846-5900 • Fax: (919) 846-9467
 sandec.com



Project Number:
11282

Project Manager:
PKS

Scale:
1" = 750'

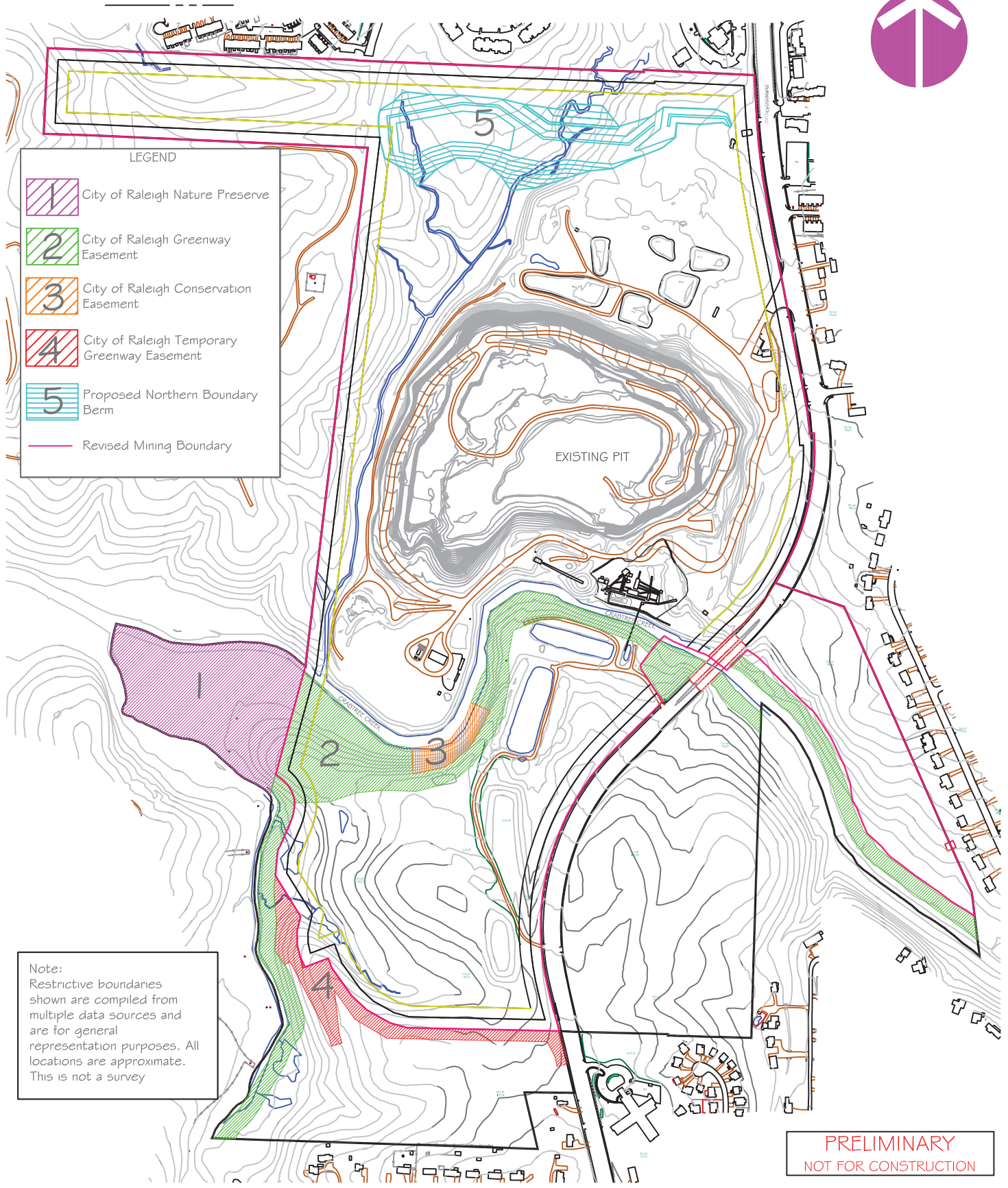
Date:
6/11/15

Map Title:
Soil Survey Map
Hanson Crabtree Quarry
Wake County, NC

Source: Wake County GIS
USGS Raleigh West quad

0 750 1,500
Feet

S&EC Soil & Environmental Consultants, PA
8412 Falls of Neuse Road, Suite 104, Raleigh, NC 27615 • Phone: (919) 846-5900 • Fax: (919) 846-9467
sandec.com



LEGEND

- 1 City of Raleigh Nature Preserve
- 2 City of Raleigh Greenway Easement
- 3 City of Raleigh Conservation Easement
- 4 City of Raleigh Temporary Greenway Easement
- 5 Proposed Northern Boundary Berm
- Revised Mining Boundary

Note:
Restrictive boundaries shown are compiled from multiple data sources and are for general representation purposes. All locations are approximate. This is not a survey

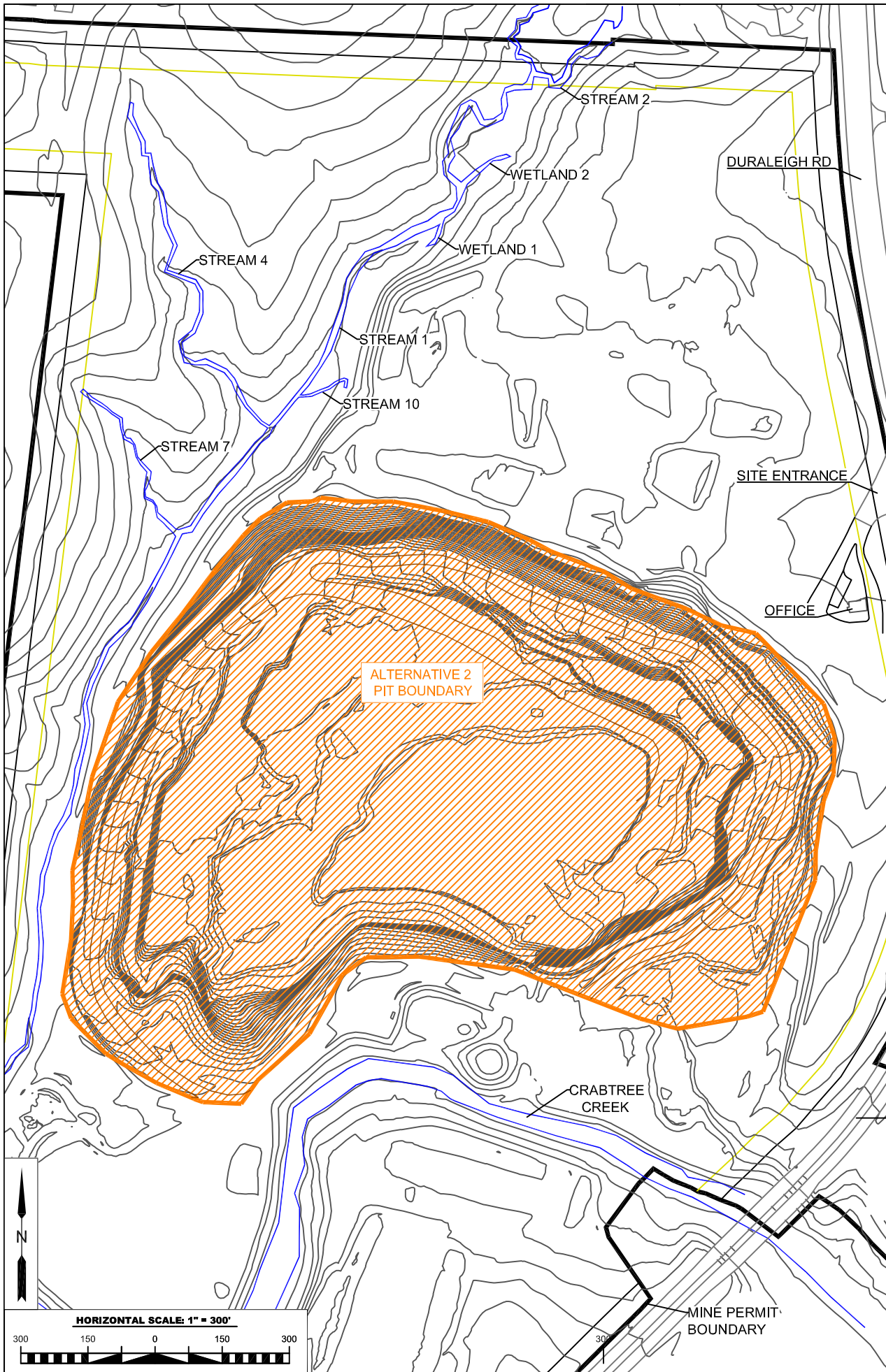
PRELIMINARY
NOT FOR CONSTRUCTION

Project: CRABTREE QUARRY EXPANSION	
Location: WAKE CO., NC	Client: HANSON AGGREGATES SOUTHEAST, LLC
Sheet Title: OVERALL CONDITIONS	

Project No.: 11282.D2
Proj. Mgr.: PKS
Scale: 1:600
Sheet No.: FIGURE X



Soil & Environmental Consultants, PA
8412 Falls of Neuse Rd., Suite 104 Raleigh, North Carolina 27615
Phone: (919) 846-5900 • Fax: (919) 846-9467
www.SandEC.com



Leigh Hanson
 300 E. JOHN CARPENTER Fwy
 IRVING, TEXAS 75062
 TEL: 800-572-2032

Leigh Hanson
 Environmental & Construction Group

PRINT DATE:
 FLIGHT DATE:

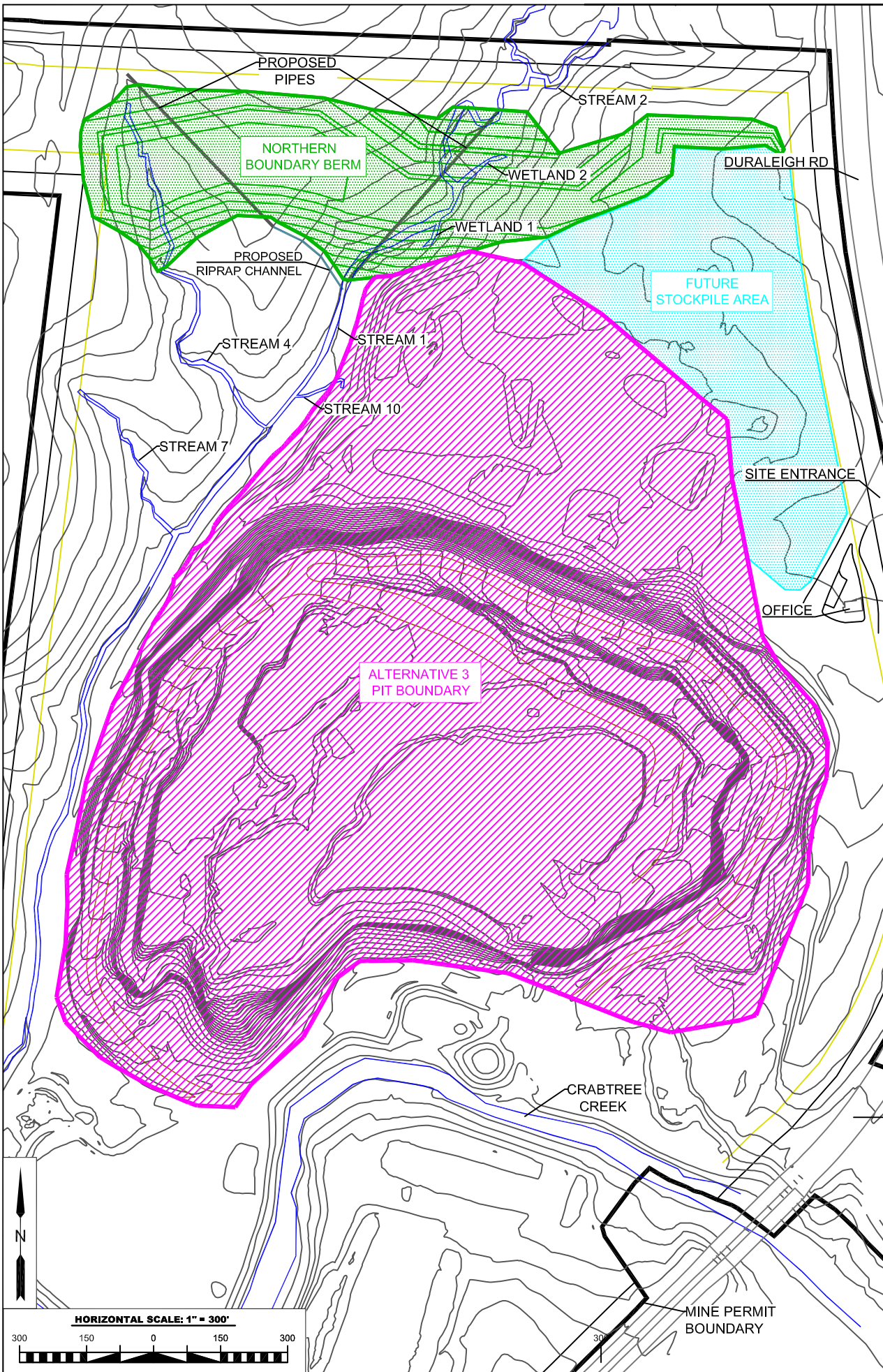
**LEIGH HANSON
 SOUTHEAST
 CRABTREE QUARRY
 WAKE COUNTY, NC**

**ALTERNATIVE 2
 ON SITE AVOIDANCE -
 EXISTING PIT**

DESIGNED:
 DRAWN: MAB
 CHECKED:
 DATE: 07/08/15
 REGION: SOUTHEAST
 LOCATION: CRABTREE
 DWG FILE:

SCALE
 HORIZONTAL:
 1" = 300'
 VERTICAL:
 1" = 300'

SHEET NO:
 2 OF 5



Lehigh Hanson
 300 E. JOHN CASPER Fwy
 WAKE COUNTY, NC 27742
 TEL: 919-453-6500
 TEL: 800-672-2982

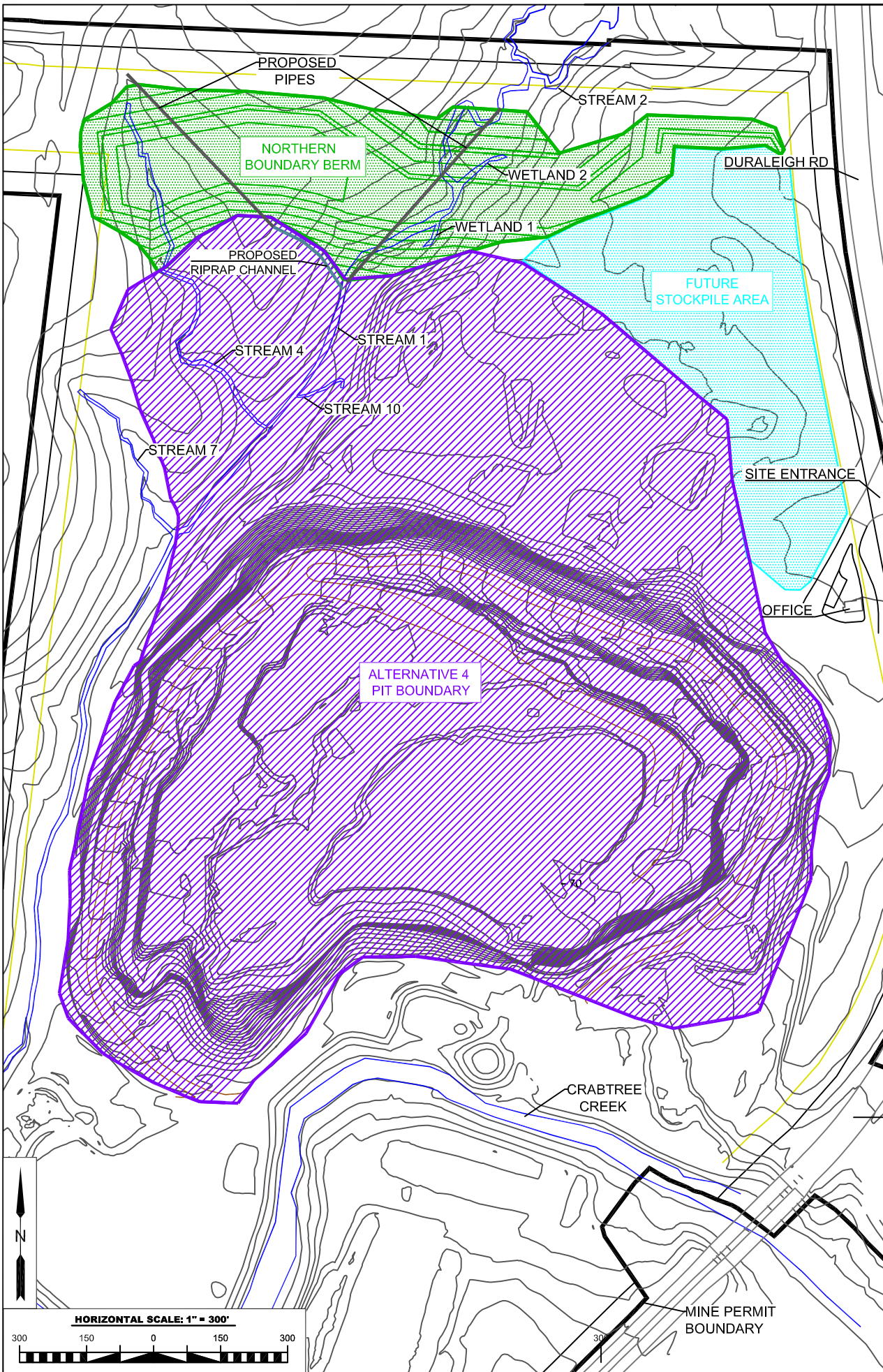
Lehigh Hanson
 MINERAL CONSTRUCTION GROUP

PRINT DATE:
 FLIGHT DATE:

LEHIGH HANSON
SOUTHEAST
CRABTREE QUARRY
WAKE COUNTY, NC

ALTERNATIVE 3
MINIMIZATION PLAN -
EASTERN PIT MINE PLAN
(NOT PROPOSED)

DESIGNED:	
DRAWN:	MAB
CHECKED:	
DATE:	07/09/15
REGION:	SOUTHEAST
LOCATION:	CRABTREE
DWG FILE:	
SCALE:	
HORIZONTAL:	1" = 300'
VERTICAL:	1" = 300'
SHEET NO.:	
	3 OF 5



Lehigh Hanson
 300 E. JOHN CASPER PIKE
 SUITE 200
 TEL: 972-553-5500
 TEL: 800-672-2982

Lehigh Hanson
 MINERAL MANAGEMENT GROUP

PRINT DATE:
 FLIGHT DATE:

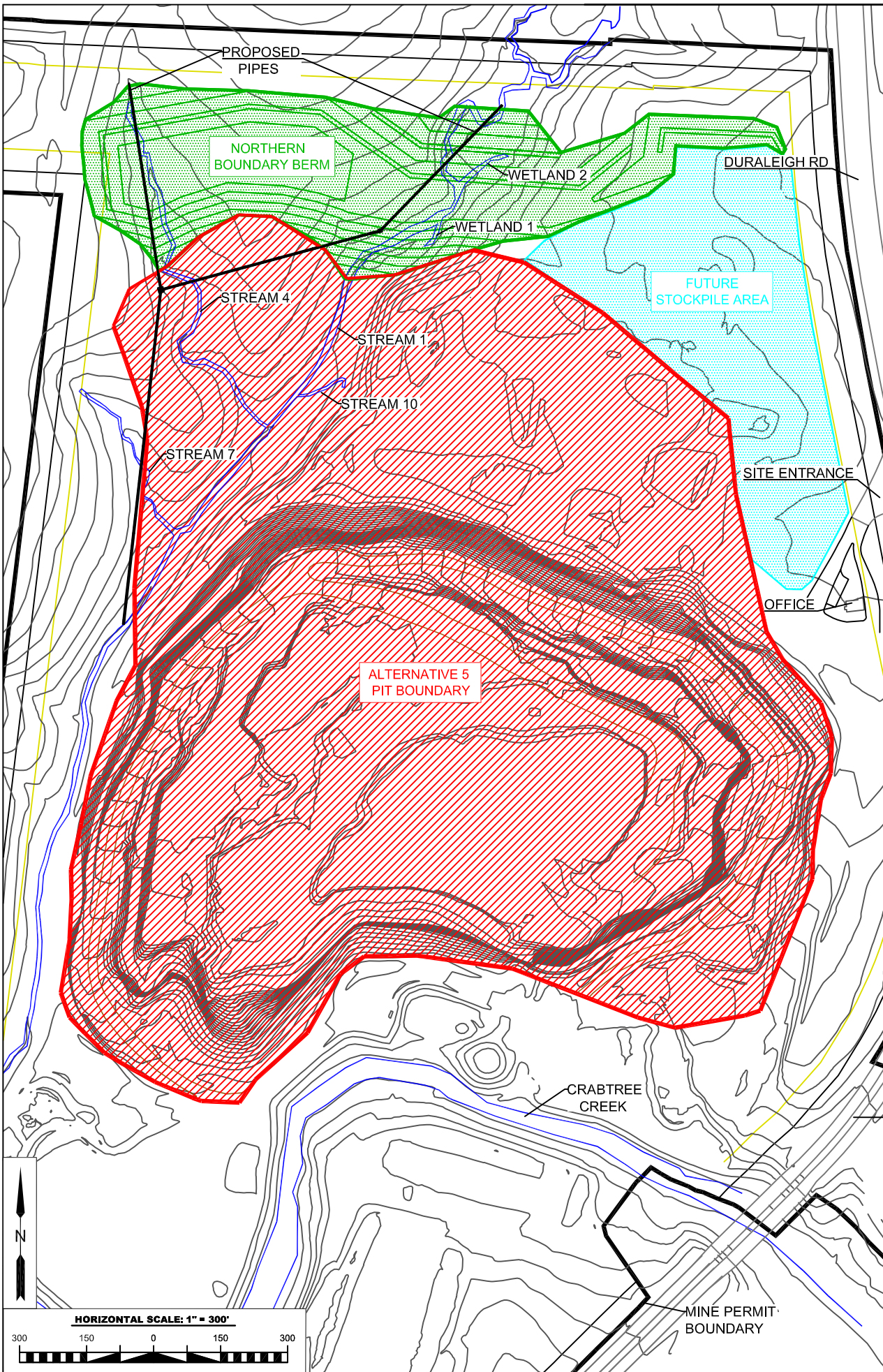
LEHIGH HANSON
SOUTHEAST
CRABTREE QUARRY
WAKE COUNTY, NC

ALTERNATIVE 4
MINIMIZATION PLAN -
PROPOSED MINE PLAN

DESIGNED:
 DRAWN: MAB
 CHECKED:
 DATE: 07/09/15
 REGION: SOUTHEAST
 LOCATION: CRABTREE
 DWG FILE:

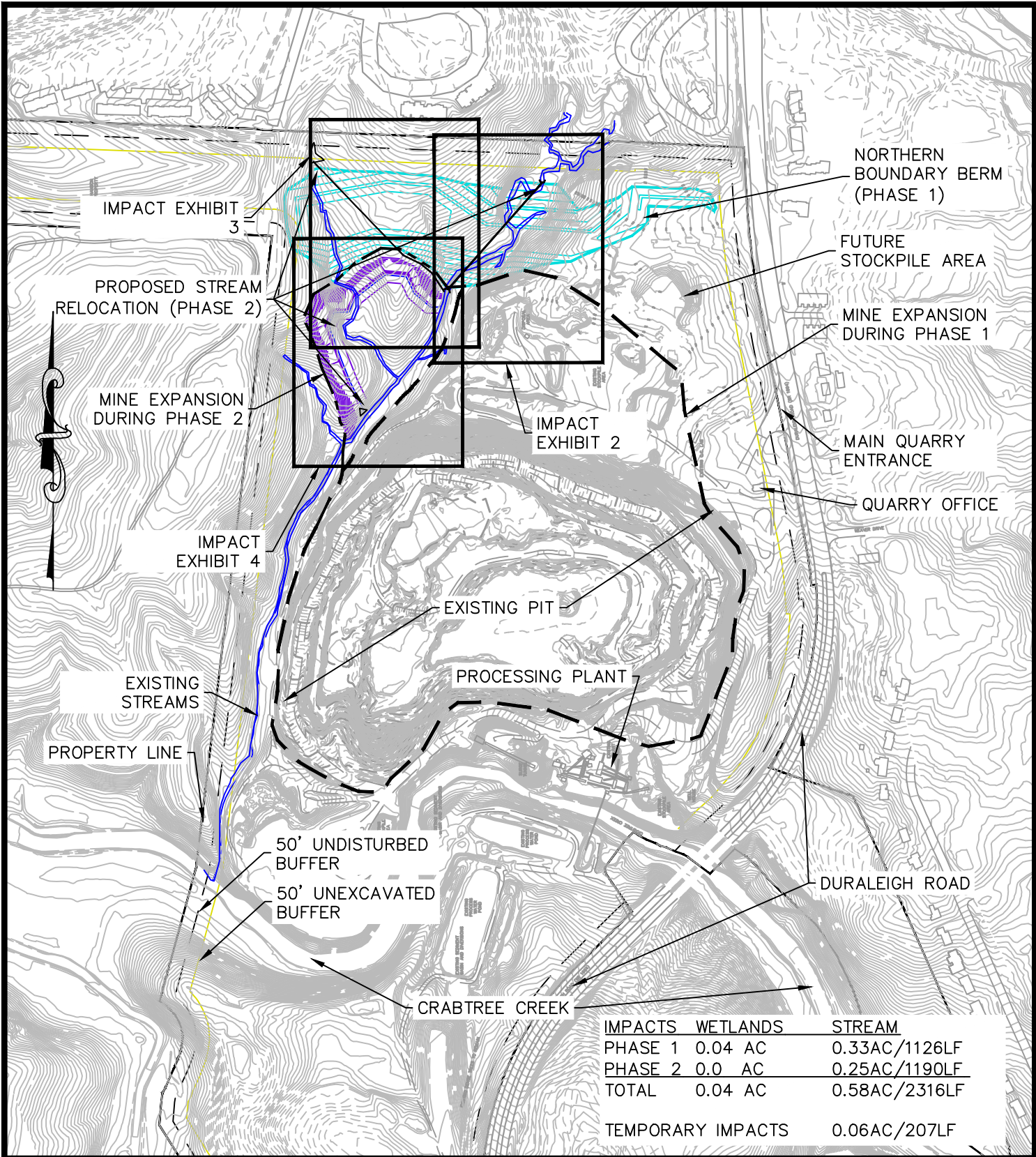
SCALE:
 HORIZONTAL:
 1" = 300'
 VERTICAL:
 1" = 300'

SHEET NO.:
 4 OF 5



Lehigh Hanson 300 E. JOHN CARPENTER Fwy WAKE COUNTY, NC 27709 TEL: 919-433-6500 TEL: 800-474-2362	
Lehigh Hanson MINERAL CONSTRUCTION GROUP	
PRINT DATE: FLIGHT DATE:	
LEHIGH HANSON SOUTHEAST CRABTREE QUARRY WAKE COUNTY, NC	
ALTERNATIVE 5 ENTIRE AREA MINE PLAN (NOT PROPOSED)	
DESIGNED:	
DRAWN: MAB	
CHECKED:	
DATE: 07/09/15	
REGION: SOUTHEAST	
LOCATION: CRABTREE	
DWG FILE:	
SCALE:	
HORIZONTAL: 1" = 300'	
VERTICAL: 1" = 300'	
SHEET NO.:	
5	OF 5


P:\R14126N\R14126N-01G\CAD\R14126N-01G-SITE.dwg July 14, 2015 2:33:01 PM



IMPACTS	WETLANDS	STREAM
PHASE 1	0.04 AC	0.33AC/1126LF
PHASE 2	0.0 AC	0.25AC/1190LF
TOTAL	0.04 AC	0.58AC/2316LF
TEMPORARY IMPACTS		0.06AC/207LF

HANSON CRABTREE QUARRY EXPANSION - OVERALL IMPACT EXHIBIT
 HANSON CRABTREE QUARRY STREAM RELOCATION
 RALEIGH, NC

SCALE: 1" = 500'
 PROJECT: R14126N-01G



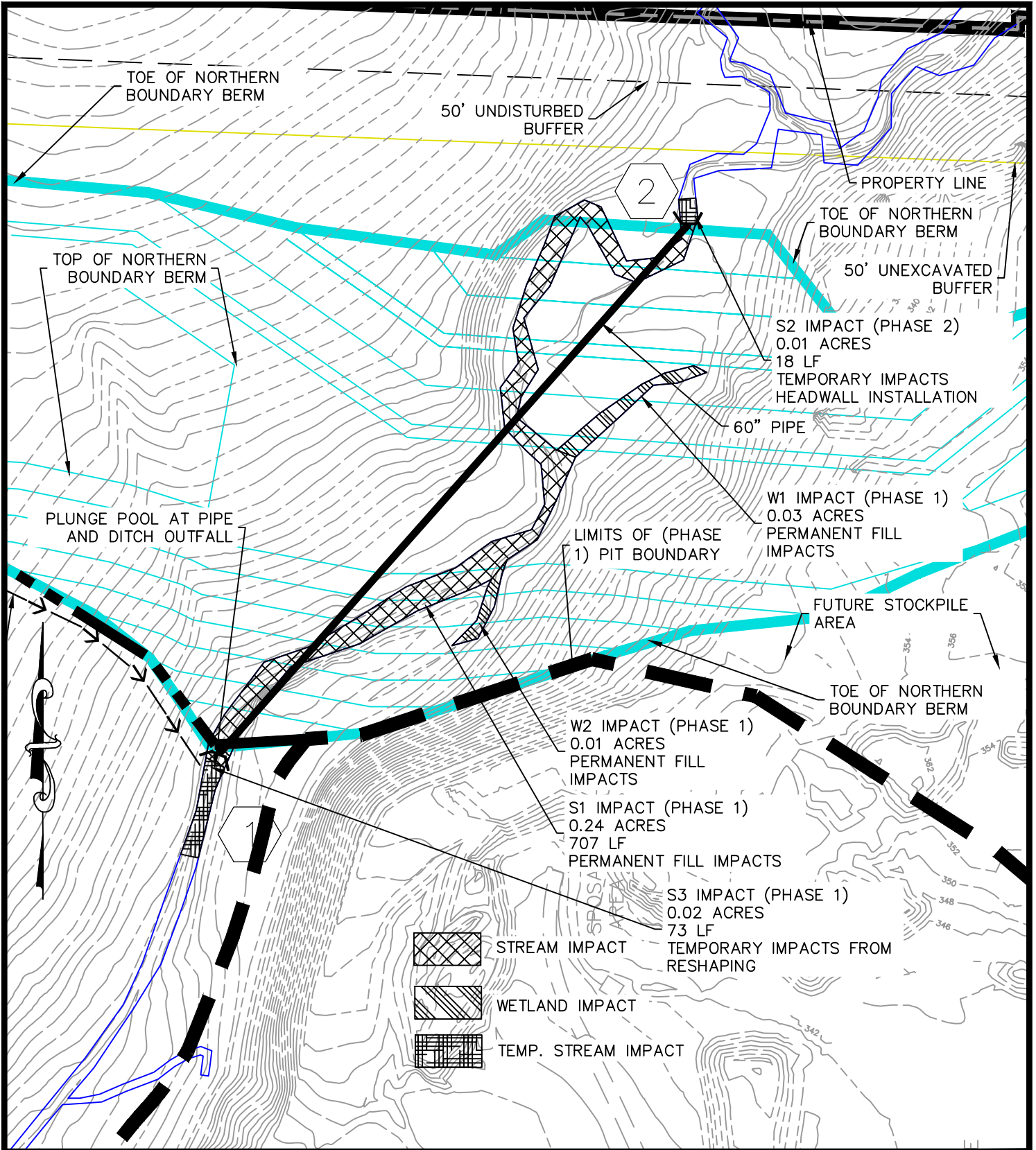
Draper Aden Associates
Engineering • Surveying • Environmental Services
 46 W. Washington Street
 Coats, NC 27521 Firm # C-0861
 910-897-7070 Fax: 910-897-6767

Blacksburg, VA
 Richmond, VA
 Charlottesville, VA
 Hampton Roads, VA

DESIGNED APM
 DRAWN APM
 CHECKED CTC JR
 DATE 6.12.15


IMPACT EXHIBIT
 1

P:\R14126N\R14126N-01G\CAD\R14126N-01G-IMPACTS.dwg July 14, 2015 2:33:20 PM



S1-S3 AND W1-W2 IMPACT (PHASE 1)
HANSON CRABTREE QUARRY STREAM RELOCATION
RALEIGH, NC

SCALE: 1" = 100'
PROJECT: R14126N-01G



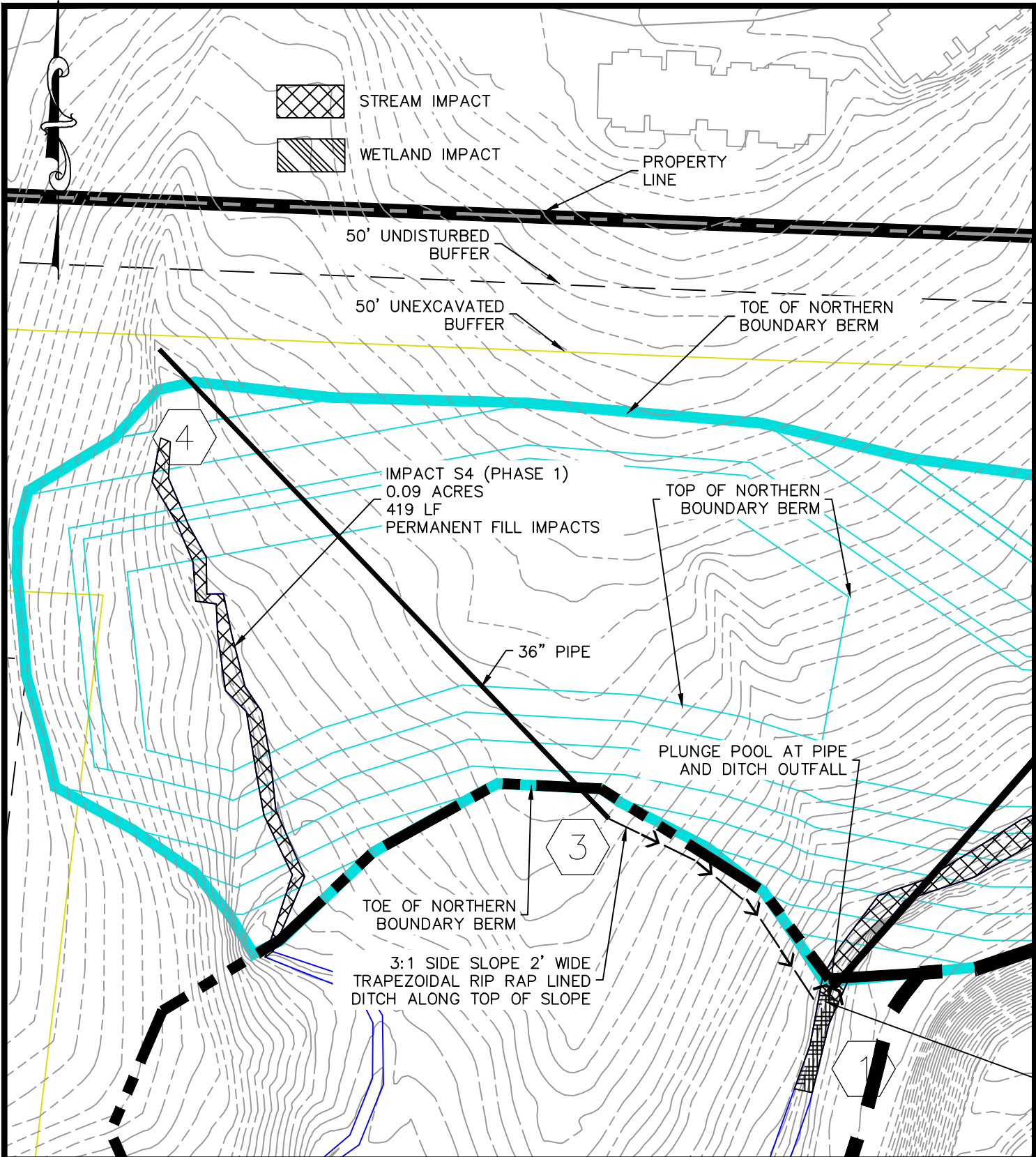
Draper Aden Associates
Engineering • Surveying • Environmental Services
 46 W. Washington Street
 Coats, NC 27521 Firm # C-0861
 910-897-7070 Fax: 910-897-6767

Blacksburg, VA
 Richmond, VA
 Charlottesville, VA
 Hampton Roads, VA

DESIGNED APM
 DRAWN APM
 CHECKED CTC JR
 DATE 6.12.15

IMPACT EXHIBIT
2

P:\R14100\R14126N\R14126N-01G\CAD\R14126N-01G\IMPACTS.dwg July 14, 2015 2:33:24 PM



S4 IMPACT (PHASE 1)
HANSON CRABTREE QUARRY STREAM RELOCATION
RALEIGH, NC

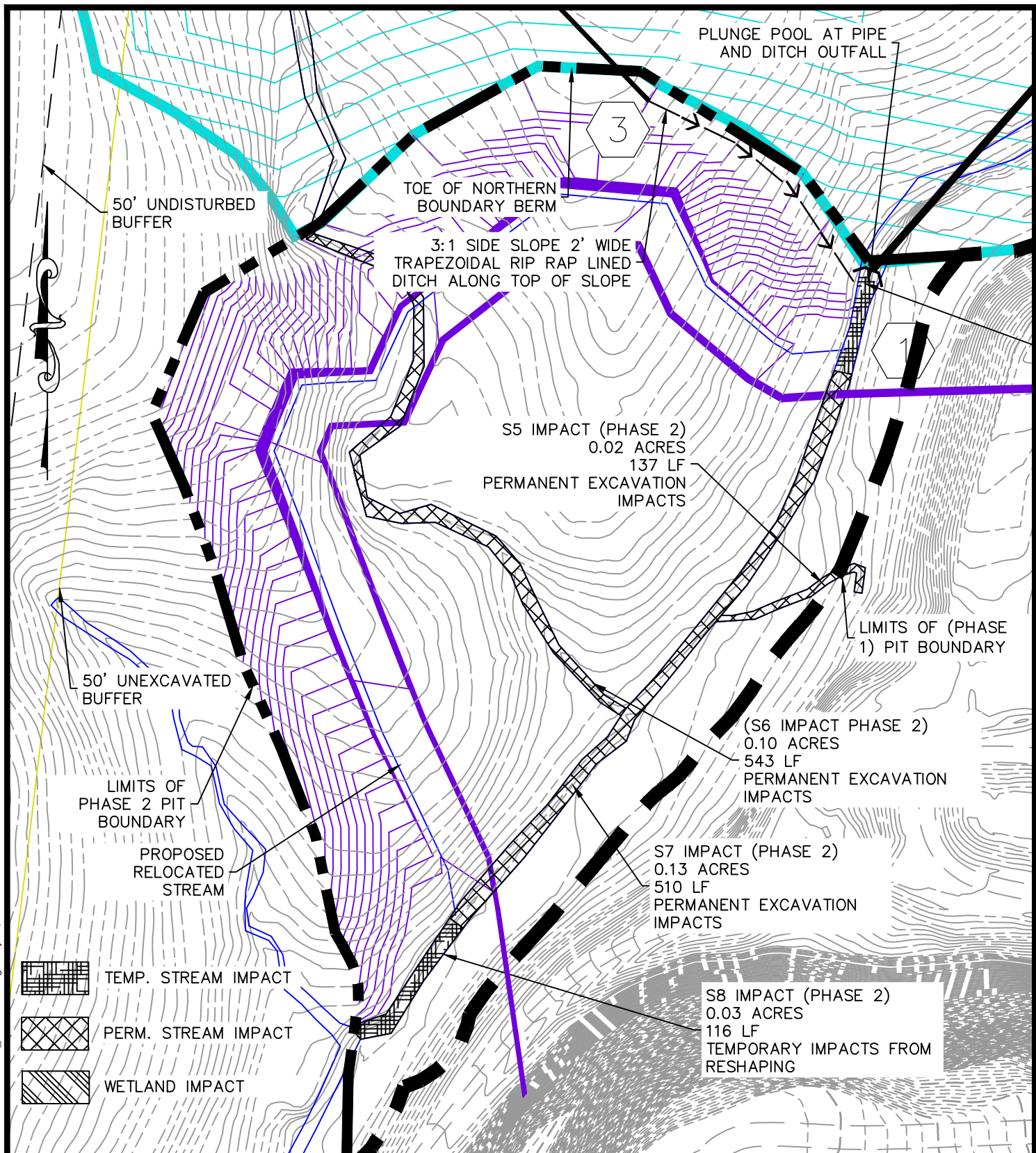
SCALE: 1" = 100'
PROJECT: R14126N-01G



Draper Aden Associates
Engineering • Surveying • Environmental Services
 46 W. Washington Street
 Coats, NC 27521 Firm # C-0861
 910-897-7070 Fax: 910-897-6767

DESIGNED APM
 DRAWN APM
 CHECKED CTC JR
 DATE 6.12.15

IMPACT EXHIBIT
3



S5-S8 IMPACTS (PHASE 2)
HANSON CRABTREE QUARRY STREAM RELOCATION
RALEIGH, NC

SCALE: 1" = 100'
PROJECT: R14126N-01G



Draper Aden Associates

Engineering • Surveying • Environmental Services

46 W. Washington Street
Coats, NC 27521 Firm # C-0861
910-897-7070 Fax: 910-897-6767

Blacksburg, VA
Richmond, VA
Charlottesville, VA
Hampton Roads, VA

DESIGNED APM
DRAWN APM
CHECKED CTC JR
DATE 6.12.15

IMPACT
EXHIBIT
4