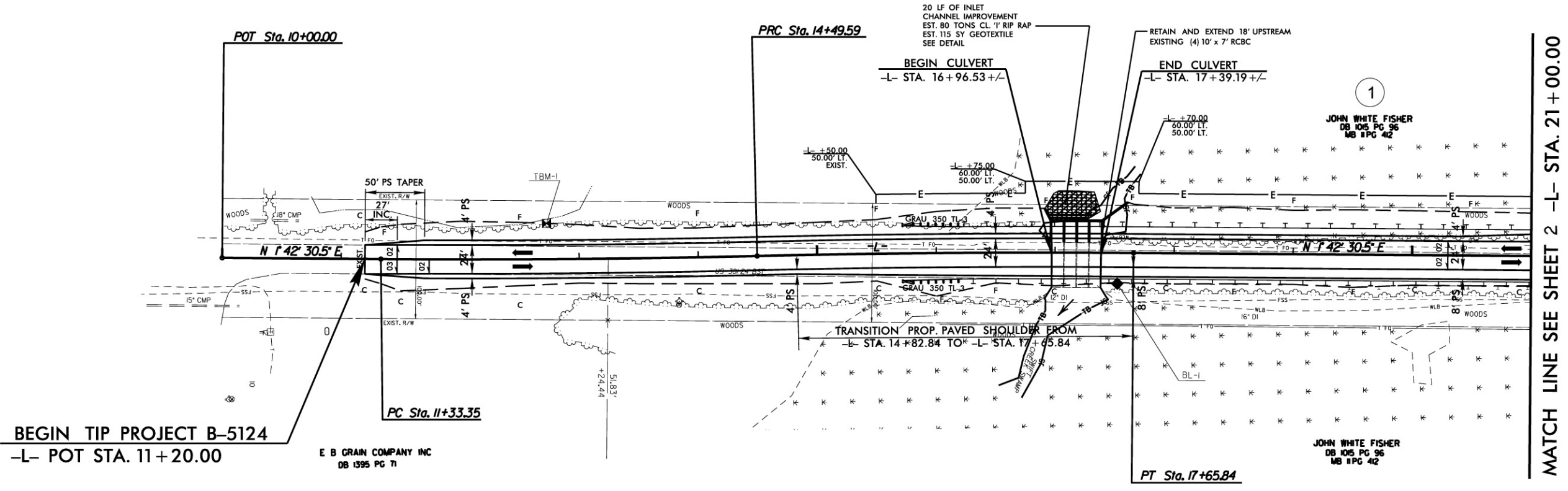




10

15

20

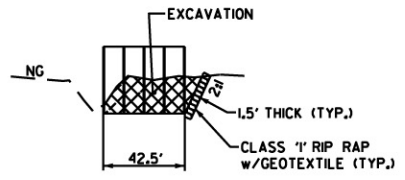


MATCH LINE SEE SHEET 2 -L- STA. 21+00.00

BEGIN TIP PROJECT B-5124  
-L- POT STA. 11+20.00


E B GRAIN COMPANY INC  
DB 1395 PG 71

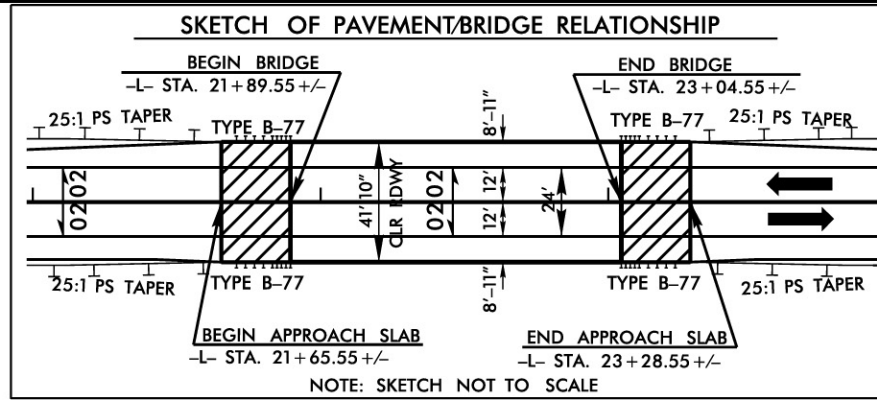
JOHN WHITE FISHER  
DB 105 PG 96  
MB #PG 412



EST. DDE 240 CY

**CULVERT 70 INLET CHANNEL**  
(LOOKING DOWNSTREAM)  
(NOT TO SCALE)

	NORTH CAROLINA DEPARTMENT OF TRANSPORTATION DIVISION OF HIGHWAYS PROJECT DEVELOPMENT AND ENVIRONMENTAL ANALYSIS UNIT
	NASH COUNTY BRIDGE Nos. 85, 141, 151 and CULVERT No. C70 ON US 301 OVER SWIFT CREEK and CULVERT No. C161 ON US 301 OVER LANE SWAMP
<b>B-5124</b>	
FIGURE 2	SHEET 1 OF 6

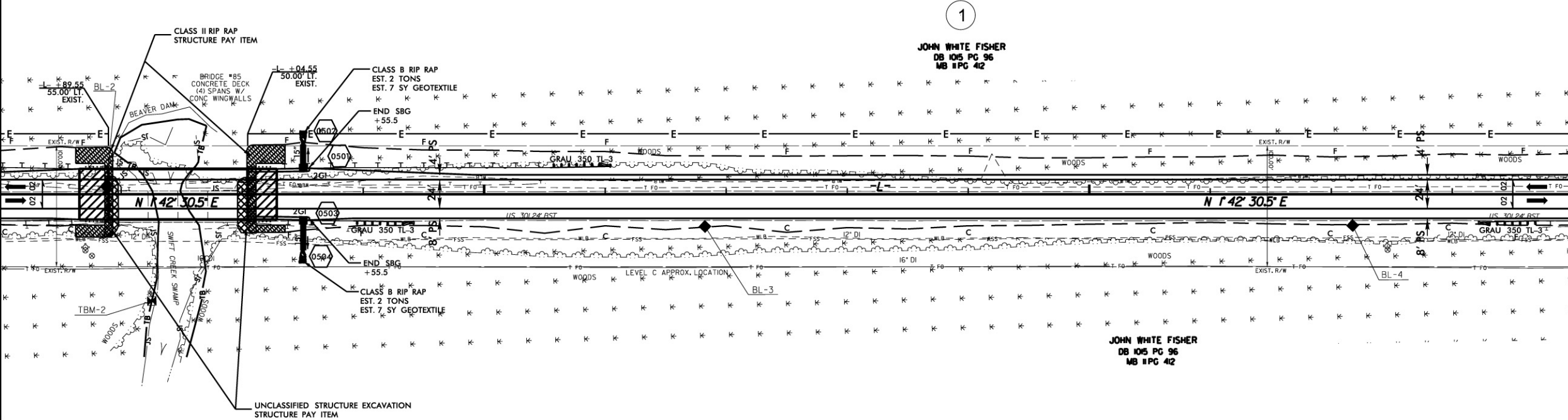


25

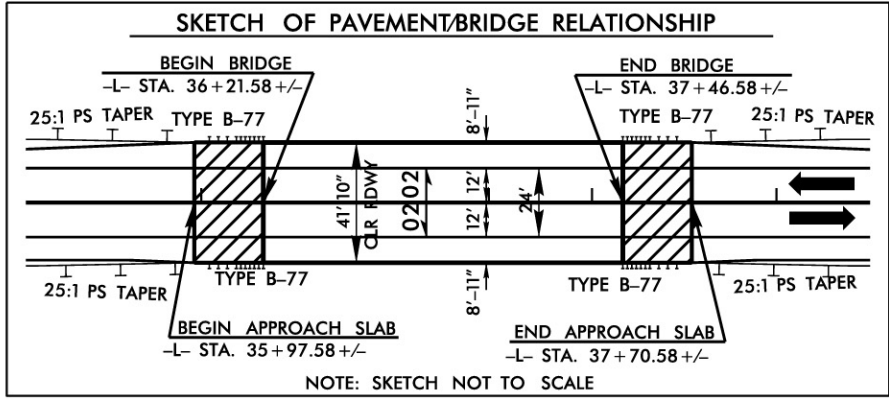
30

MATCH LINE SEE SHEET 1 -L- STA. 21+00.00

MATCH LINE SEE SHEET 3 -L- STA. 34+00.00



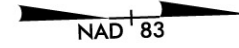
	NORTH CAROLINA DEPARTMENT OF TRANSPORTATION DIVISION OF HIGHWAYS PROJECT DEVELOPMENT AND ENVIRONMENTAL ANALYSIS UNIT
	NASH COUNTY BRIDGE Nos. 85, 141, 151 and CULVERT No. C70 ON US 301 OVER SWIFT CREEK and CULVERT No. C161 ON US 301 OVER LANE SWAMP B-5124
FIGURE 2	SHEET 2 OF 6



35

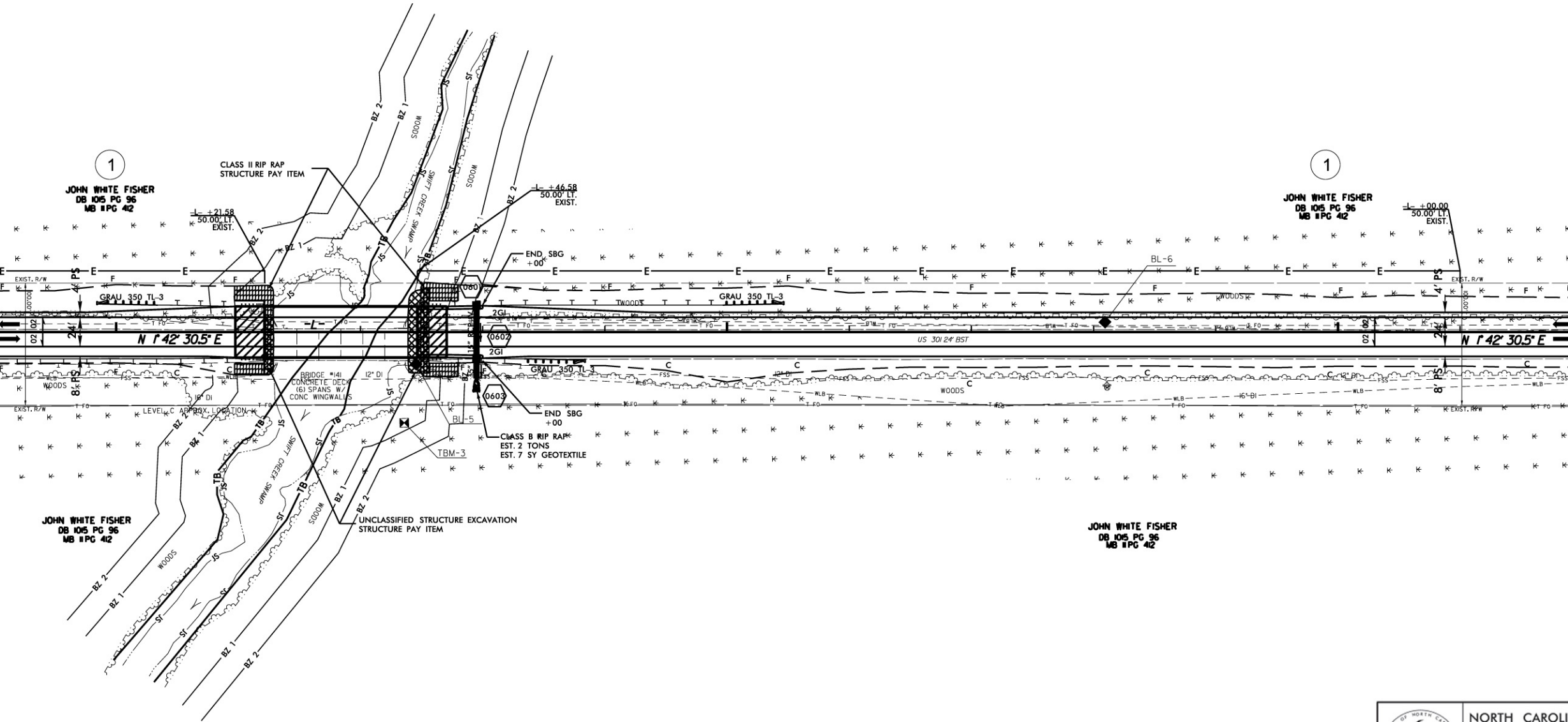
40


45



MATCH LINE SEE SHEET 2 -L- STA. 34 + 00.00

MATCH LINE SEE SHEET 4 -L- STA. 47 + 00.00

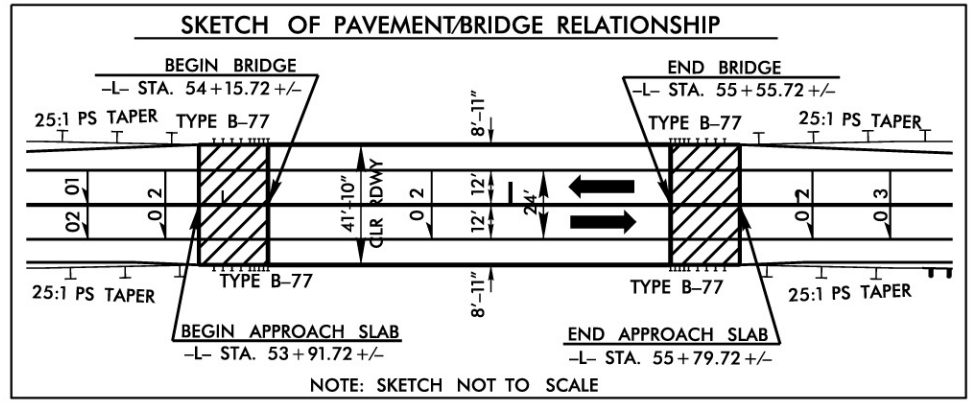
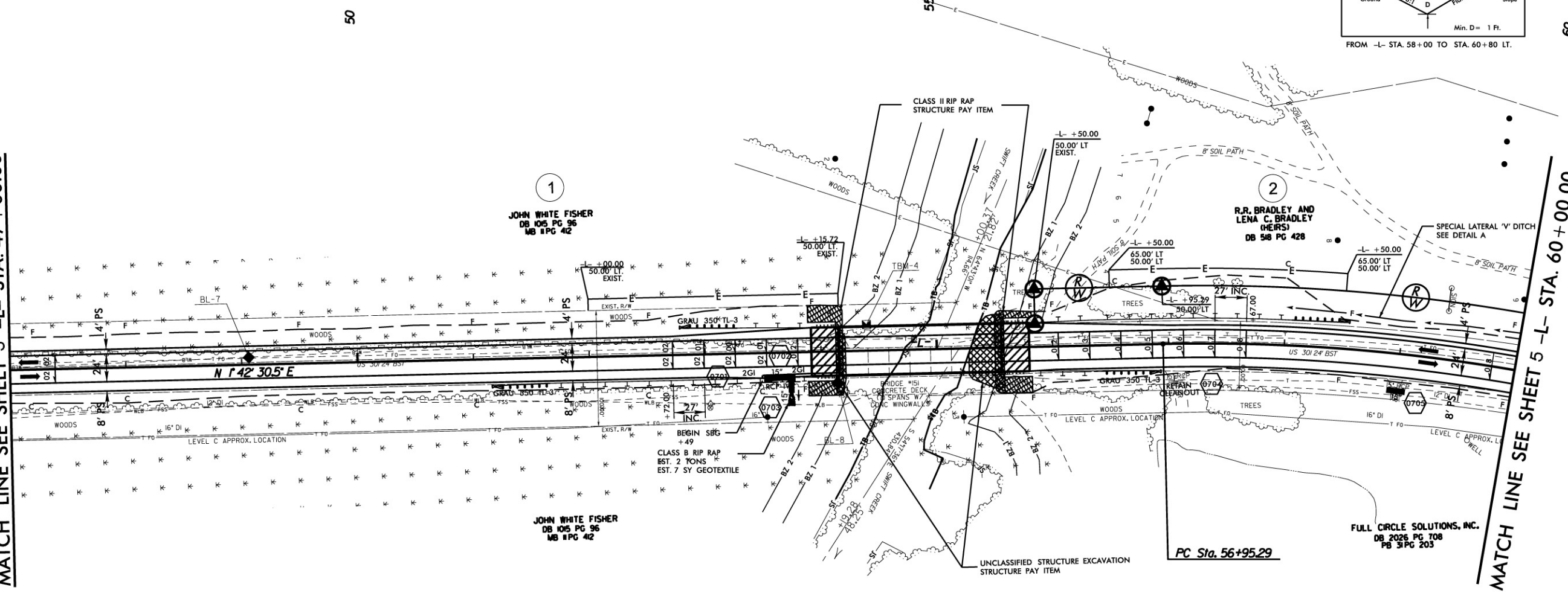
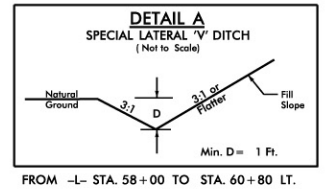


	NORTH CAROLINA DEPARTMENT OF TRANSPORTATION DIVISION OF HIGHWAYS PROJECT DEVELOPMENT AND ENVIRONMENTAL ANALYSIS UNIT
	NASH COUNTY BRIDGE Nos. 85, 141, 151 and CULVERT No. C70 ON US 301 OVER SWIFT CREEK and CULVERT No. C161 ON US 301 OVER LANE SWAMP B-5124

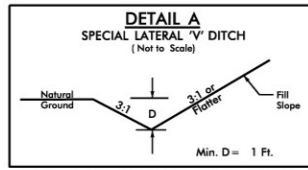
MATCH LINE SEE SHEET 3 -L- STA. 47+00.00

MATCH LINE SEE SHEET 5 -L- STA. 60+00.00

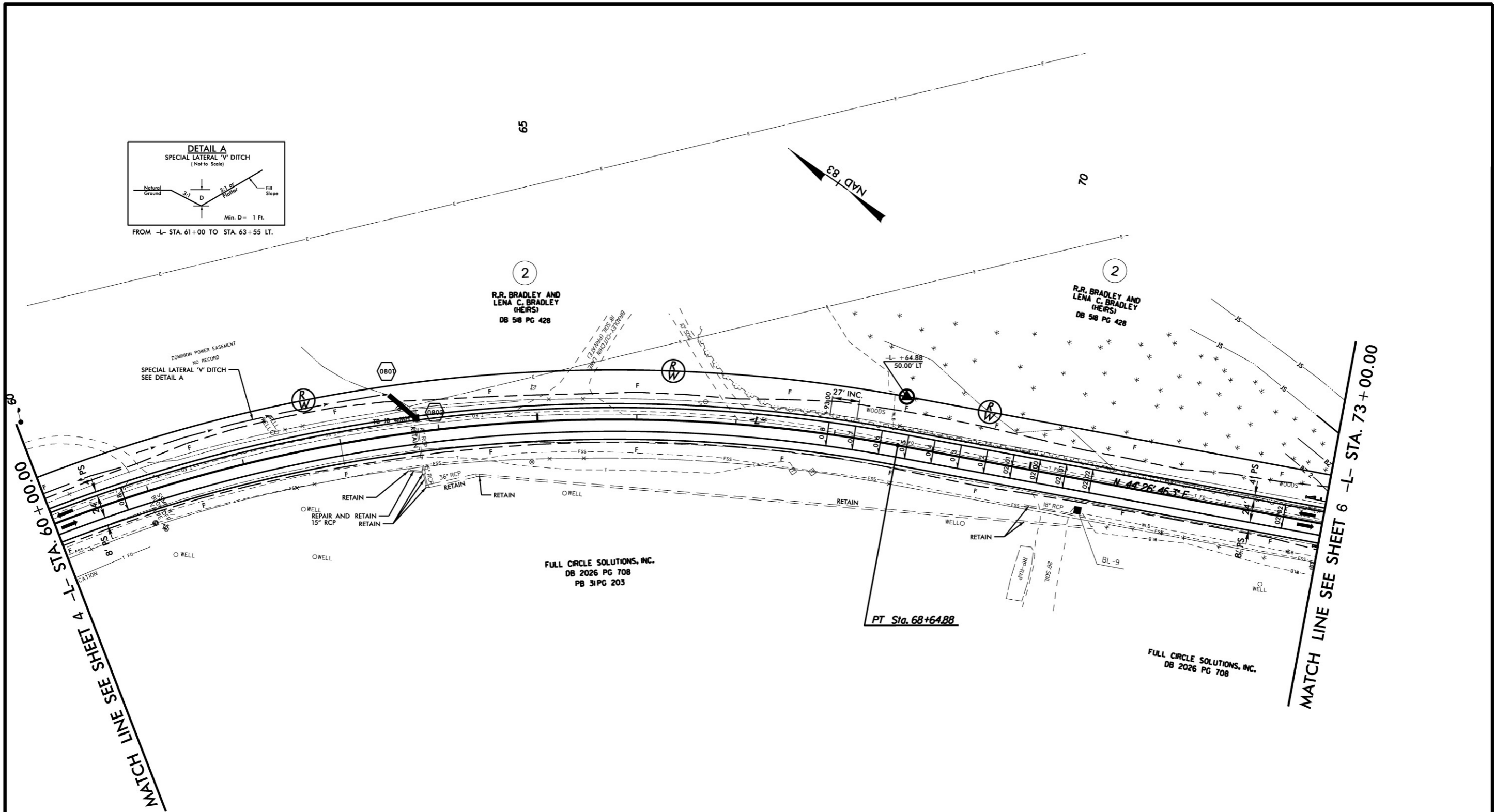
NAD 83



	NORTH CAROLINA DEPARTMENT OF TRANSPORTATION DIVISION OF HIGHWAYS PROJECT DEVELOPMENT AND ENVIRONMENTAL ANALYSIS UNIT
	NASH COUNTY BRIDGE Nos. 85, 141, 151 and CULVERT No. C70 ON US 301 OVER SWIFT CREEK and CULVERT No. C161 ON US 301 OVER LANE SWAMP B-5124
FIGURE 2	SHEET 4 OF 6



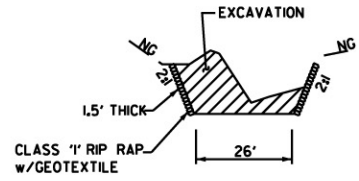
FROM -L- STA. 61+00 TO STA. 63+55 LT.



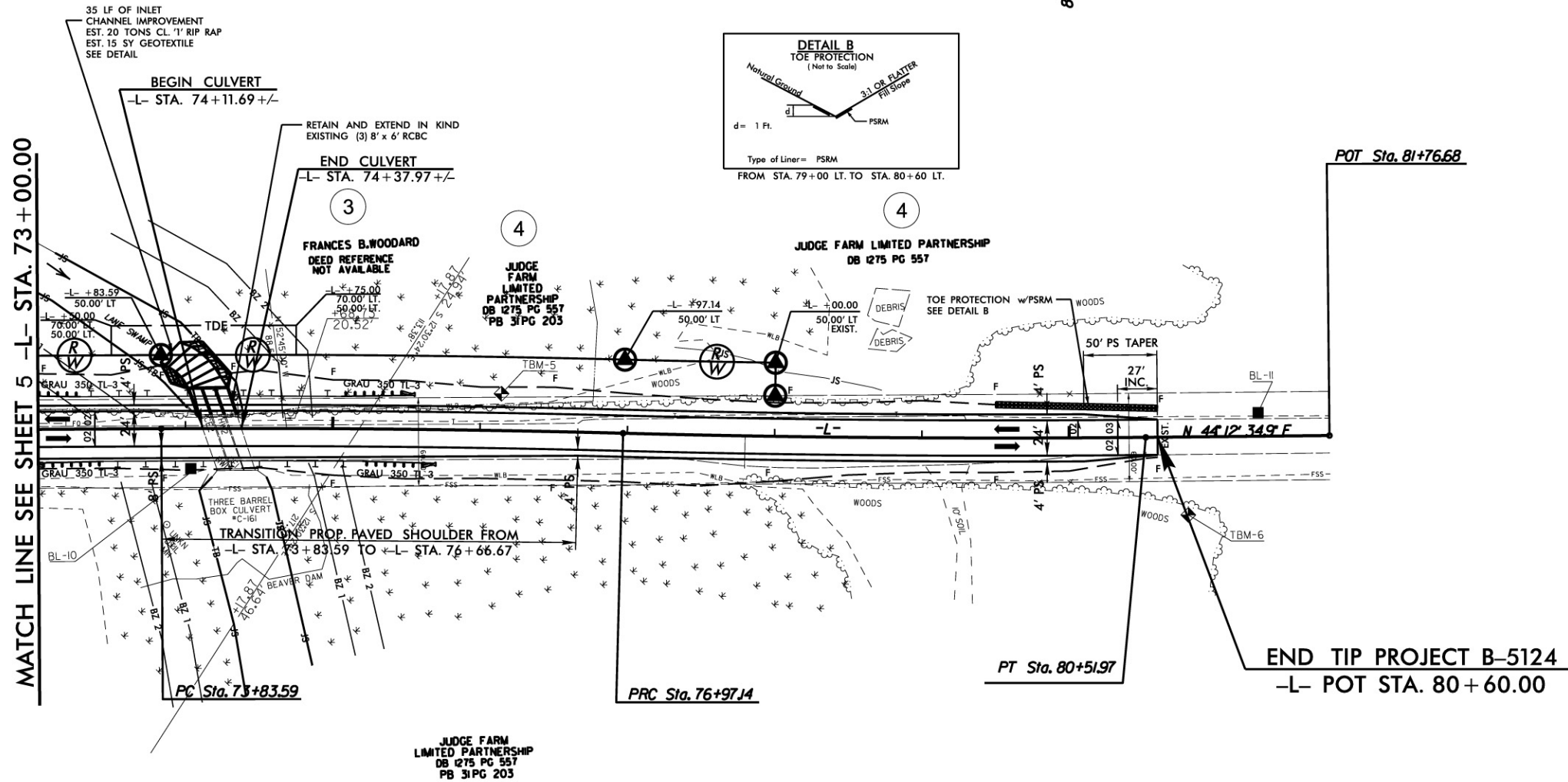
MATCH LINE SEE SHEET 4 -L- STA. 69+00.00


MATCH LINE SEE SHEET 6 -L- STA. 73+00.00

	NORTH CAROLINA DEPARTMENT OF TRANSPORTATION DIVISION OF HIGHWAYS PROJECT DEVELOPMENT AND ENVIRONMENTAL ANALYSIS UNIT
	NASH COUNTY BRIDGE Nos. 85, 141, 151 and CULVERT No. C70 ON US 301 OVER SWIFT CREEK and CULVERT No. C161 ON US 301 OVER LANE SWAMP  B-5124
FIGURE 2	SHEET 5 OF 6



**CULVERT 161 INLET CHANNEL**  
(LOOKING DOWNSTREAM)  
(NOT TO SCALE)



	<p>NORTH CAROLINA DEPARTMENT OF TRANSPORTATION DIVISION OF HIGHWAYS PROJECT DEVELOPMENT AND ENVIRONMENTAL ANALYSIS UNIT</p>
	<p>NASH COUNTY BRIDGE Nos. 85, 141, 151 and CULVERT No. C70 ON US 301 OVER SWIFT CREEK and CULVERT No. C161 ON US 301 OVER LANE SWAMP</p> <p><b>B-5124</b></p>
<p>FIGURE 2</p>	<p>SHEET 6 OF 6</p>