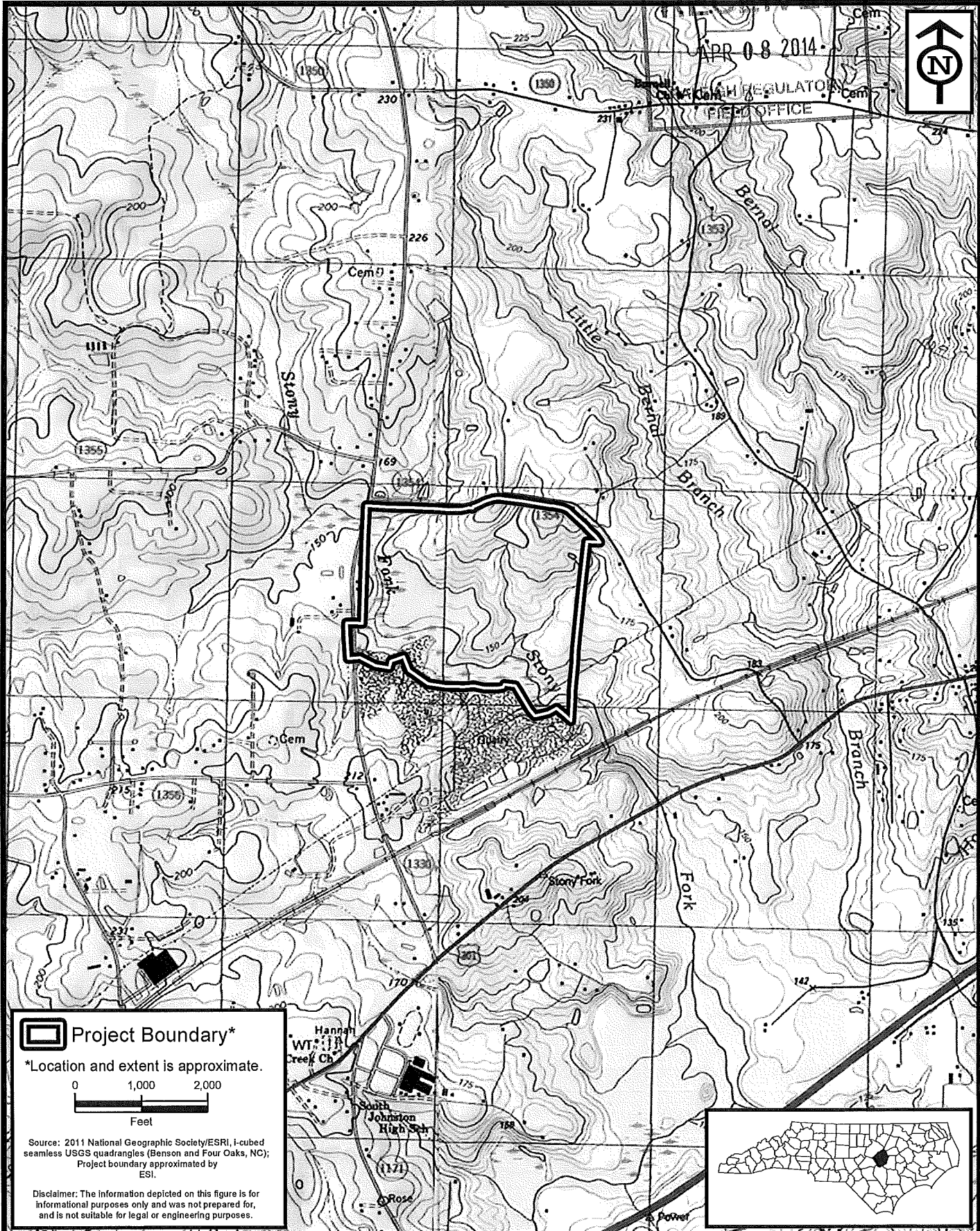



RECEIVED  
 APR 08 2014  
 ENVIRONMENTAL REGULATORY  
 FIELD OFFICE



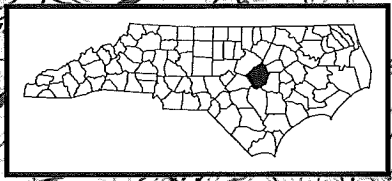
 **Project Boundary\***

\*Location and extent is approximate.

0 1,000 2,000  
 Feet

Source: 2011 National Geographic Society/ESRI, I-cubed seamless USGS quadrangles (Benson and Four Oaks, NC); Project boundary approximated by ESI.

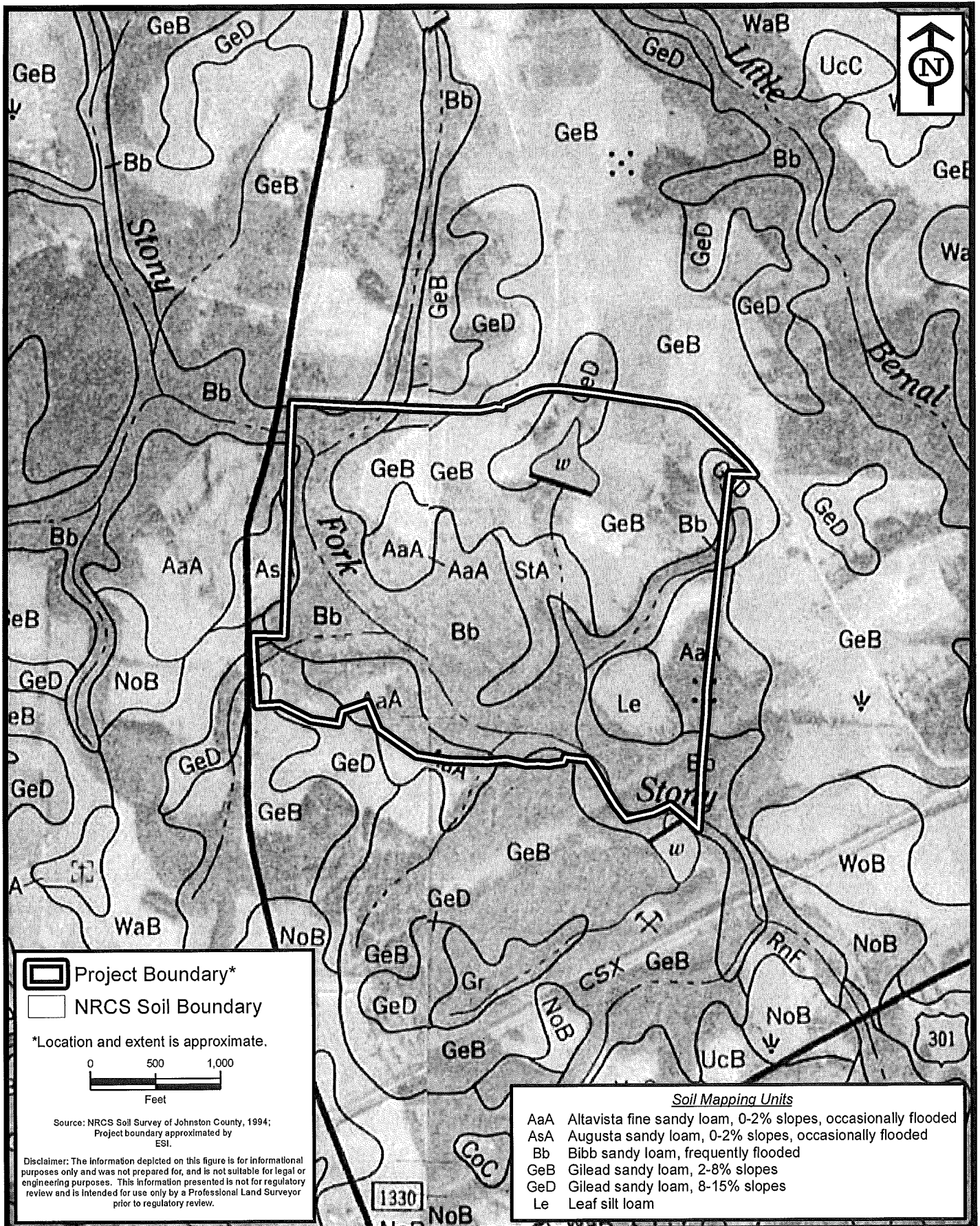
Disclaimer: The information depicted on this figure is for informational purposes only and was not prepared for, and is not suitable for legal or engineering purposes.






**ENVIRONMENTAL SERVICES, INC.**  
 524 S. New Hope Road  
 Raleigh, North Carolina 27610  
 (919) 212-1760  
 (919) 212-1707 FAX  
 www.environmentalservicesinc.com

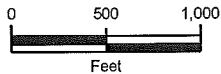
Project Location  
**Benson Quarry**  
 Johnston County, North Carolina

Project:	ER12191.00
Date:	Mar 2014
Drwn/Chkd:	KT/RT
Figure:	1



 Project Boundary\*  
 NRCS Soil Boundary

\*Location and extent is approximate.



Source: NRCS Soil Survey of Johnston County, 1994;  
 Project boundary approximated by  
 ESI.

Disclaimer: The information depicted on this figure is for informational purposes only and was not prepared for, and is not suitable for legal or engineering purposes. This information presented is not for regulatory review and is intended for use only by a Professional Land Surveyor prior to regulatory review.

Soil Mapping Units	
AaA	Altavista fine sandy loam, 0-2% slopes, occasionally flooded
AsA	Augusta sandy loam, 0-2% slopes, occasionally flooded
Bb	Bibb sandy loam, frequently flooded
GeB	Gilead sandy loam, 2-8% slopes
GeD	Gilead sandy loam, 8-15% slopes
Le	Leaf silt loam



**ENVIRONMENTAL SERVICES, INC.**  
 524 S. New Hope Road  
 Raleigh, North Carolina 27610  
 (919) 212-1760  
 (919) 212-1707 FAX  
 www.environmentalservicesinc.com

NRCS Soils  
**Benson Quarry**  
 Johnston County, North Carolina

Project:	ER12191.00
Date:	Mar 2014
Drwn/Chkd:	KT/RT
Figure:	2



RECEIVED

APR 08 2014

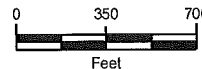
RALEIGH REGULATORY  
FIELD OFFICE



POTENTIAL STORAGE:  
991,011 yds@elev.260'

STRIPPING: 897,103 yds

RESERVES: 6,765,536 tons  
Less '11, 12, & 13 Prod 1,258,063 tons  
5,507,473 tons



Source: Image and Features provided by Martin Marietta  
Materials.

Disclaimer: The information depicted on this figure is for informational purposes  
only and was not prepared for, and is not suitable for legal or engineering purposes.



**ENVIRONMENTAL  
SERVICES, INC.**

524 S. New Hope Road  
Raleigh, North Carolina 27610  
(919) 212-1760  
(919) 212-1707 FAX

[www.environmentalservicesinc.com](http://www.environmentalservicesinc.com)

3.1.1 No Action Alternative  
**Benson Quarry**  
Johnston County, North Carolina

Project: ER12191.01

Date: Mar 2014

Drwn/Chkd: KT/RT

Figure: 1.1

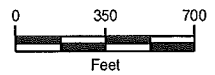


POTENTIAL STORAGE:  
3,139,164 yds@elev.260'

POTENTIAL STORAGE:  
3,201,373 yds@elev.320'

STRIPPING: 2,478,716 yds  
600,000 yds settling fines  
3,078,716 yds

RESERVES: 13,549,152 tons  
Less '11,12 & 13 Prod 1,258,063 tons  
12,291,089 tons



Source: Image and Features provided by Martin Marietta Materials.

Disclaimer: The Information depicted on this figure is for informational purposes only and was not prepared for, and is not suitable for legal or engineering purposes.



**ENVIRONMENTAL SERVICES, INC.**  
524 S. New Hope Road  
Raleigh, North Carolina 27610  
(919) 212-1780  
(919) 212-1797 FAX  
[www.environmentalservicesinc.com](http://www.environmentalservicesinc.com)

3.1.2 Removal of Existing Waste Pile  
**Benson Quarry**  
Johnston County, North Carolina

Project:	ER12191.01
Date:	Mar 2014
Drwn/Chkd:	KT/RT
Figure:	1.2

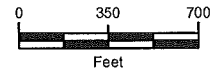




**TOTAL STORAGE: 6,340,539 yds**

**STRIPPING:** 549,098 yds  
**STRIPPING TO DATE:** 3,078,716 yds  
**TOTAL:** 3,627,814 yds

**RESERVES:** 6,237,600 tons  
**RESERVES TO DATE:** 12,291,063 tons  
**TOTAL:** 18,528,663 tons



Source: Image and Features provided by Martin Marietta Materials.

Disclaimer: The information depicted on this figure is for informational purposes only and was not prepared for, and is not suitable for legal or engineering purposes.



**ENVIRONMENTAL SERVICES, INC.**  
624 S. New Hope Road  
Raleigh, North Carolina 27610  
(919) 212-1760  
(919) 212-1707 FAX  
[www.environmentalservicesinc.com](http://www.environmentalservicesinc.com)

3.1.3 Relocation of Primary Crushing Station

**Benson Quarry**

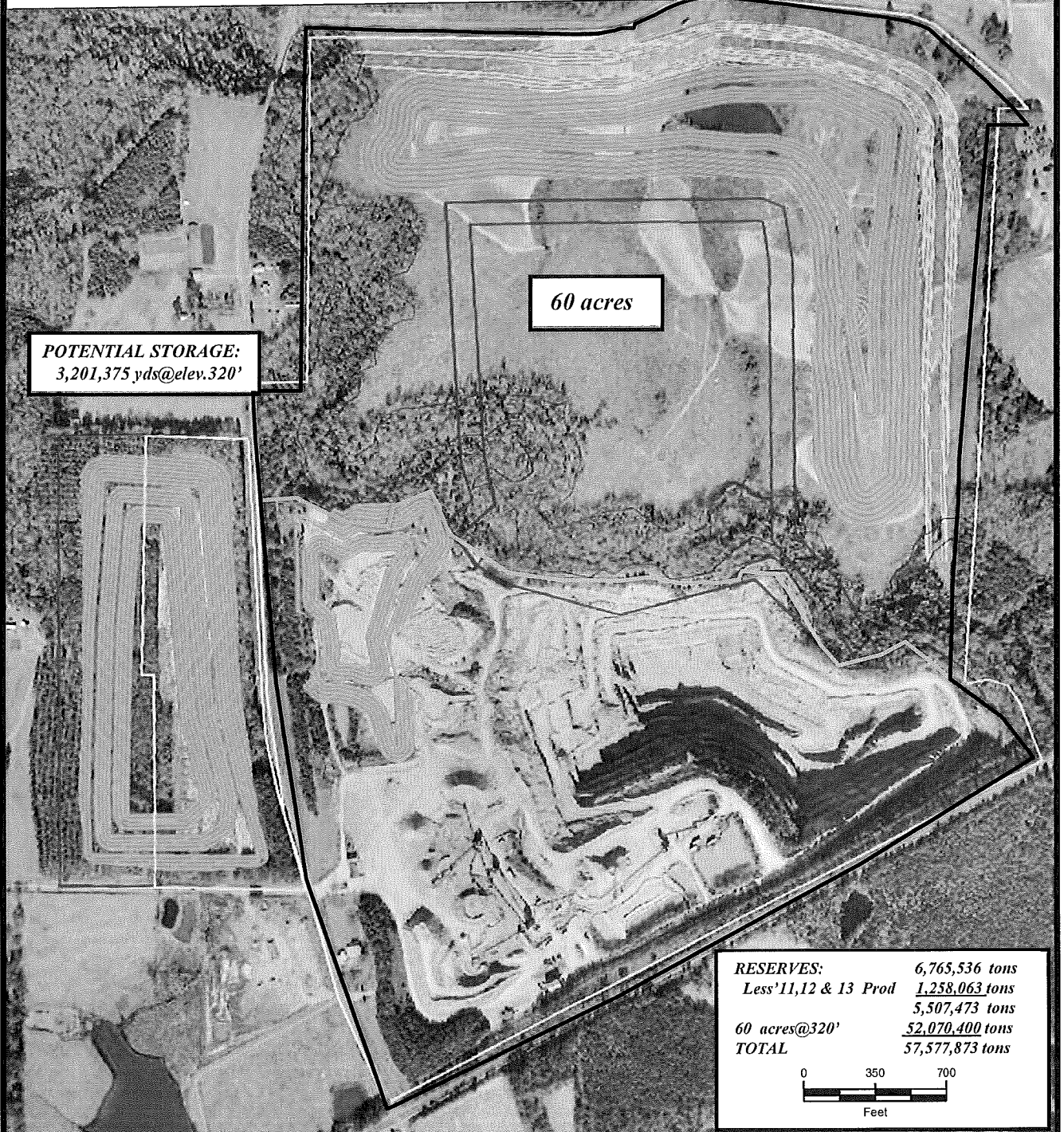
Johnston County, North Carolina

Project:	ER12191.01
Date:	Mar 2014
Drwn/Chkd:	KT/RT
Figure:	1.3

**STRIPPING:** 897,103 yds.  
**Channel:** 785,660 yds.  
**North Pit:** 7,948,057 yds.  
**TOTAL STRIPPING:** 9,630,820 yds.

**POTENTIAL STORAGE:**  
 3,139,164 yds@elev.260'

**TOTAL STORAGE:**  
 7,331,550 yds.



Source: Image and Features provided by Martin Marietta Materials.

Disclaimer: The Information depicted on this figure is for informational purposes only and was not prepared for, and is not suitable for legal or engineering purposes.



**ENVIRONMENTAL SERVICES, INC.**  
 524 S. Naw Hope Road  
 Raleigh, North Carolina 27610  
 (919) 212-1760  
 (919) 212-1707 FAX  
 www.environmentalservicesinc.com

3.1.4 Pit Expansion Through Wetlands  
 with Diversion Channel North of Overburden Pile

**Benson Quarry**

Johnston County, North Carolina

Project: ER12191.01

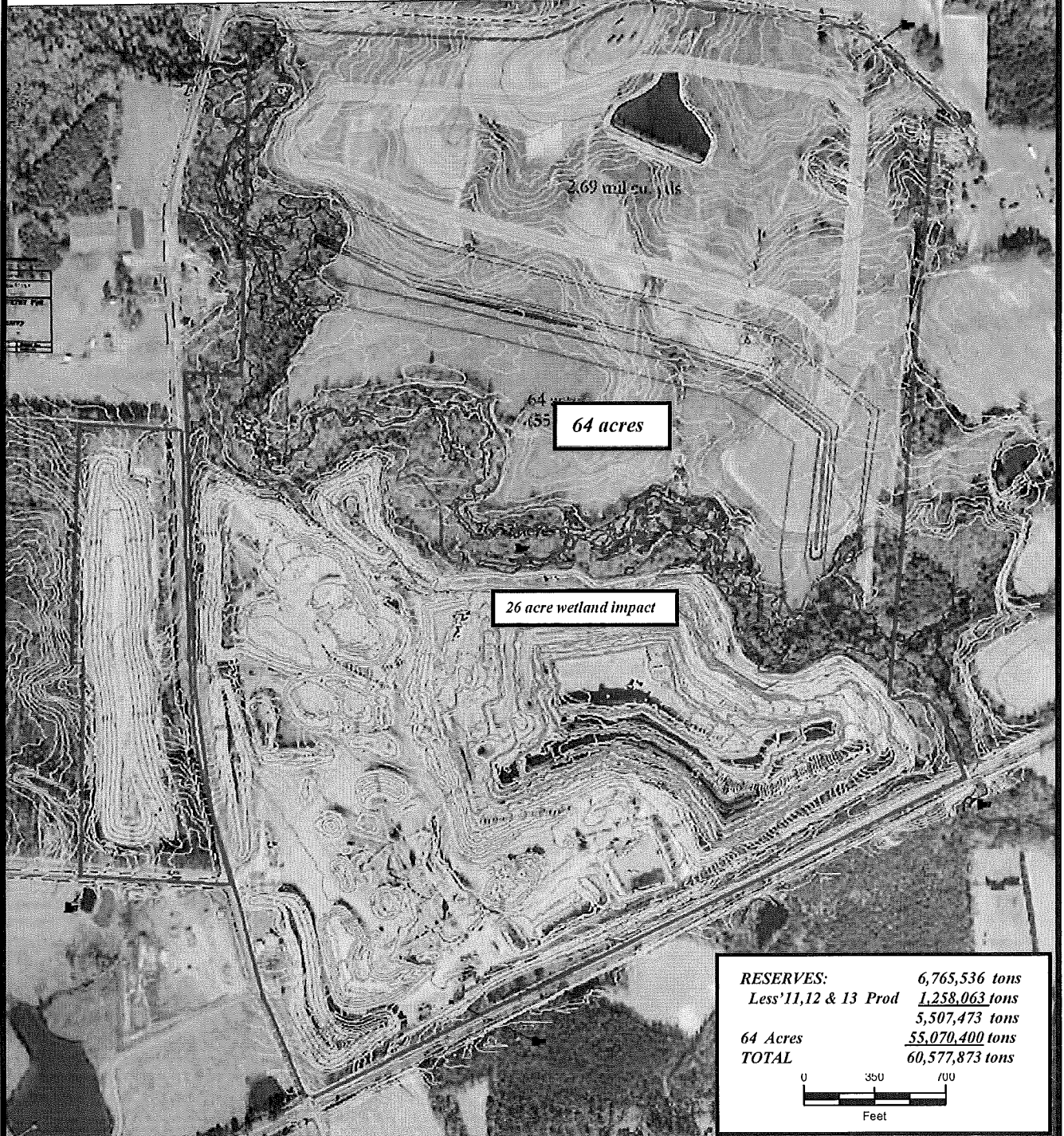
Date: Mar 2014

Drwn/Chkd: KT/RT

Figure: 1.4



**POTENTIAL STORAGE:**  
2,700,000 yds<sup>3</sup>



Source: Image and Features provided by Martin Marietta Materials.

Disclaimer: The Information depicted on this figure is for informational purposes only and was not prepared for, and is not suitable for legal or engineering purposes.



**ENVIRONMENTAL SERVICES, INC.**

524 S. New Hope Road  
Raleigh, North Carolina 27610  
(919) 212-1760  
(919) 212-1707 FAX

[www.environmentalservicesinc.com](http://www.environmentalservicesinc.com)

3.1.5 Pit Expansion Through Wetlands with Diversion Channel South of Overburden Pile (Preferred Alternative)

**Benson Quarry**

Johnston County, North Carolina

Project: ER12191.01

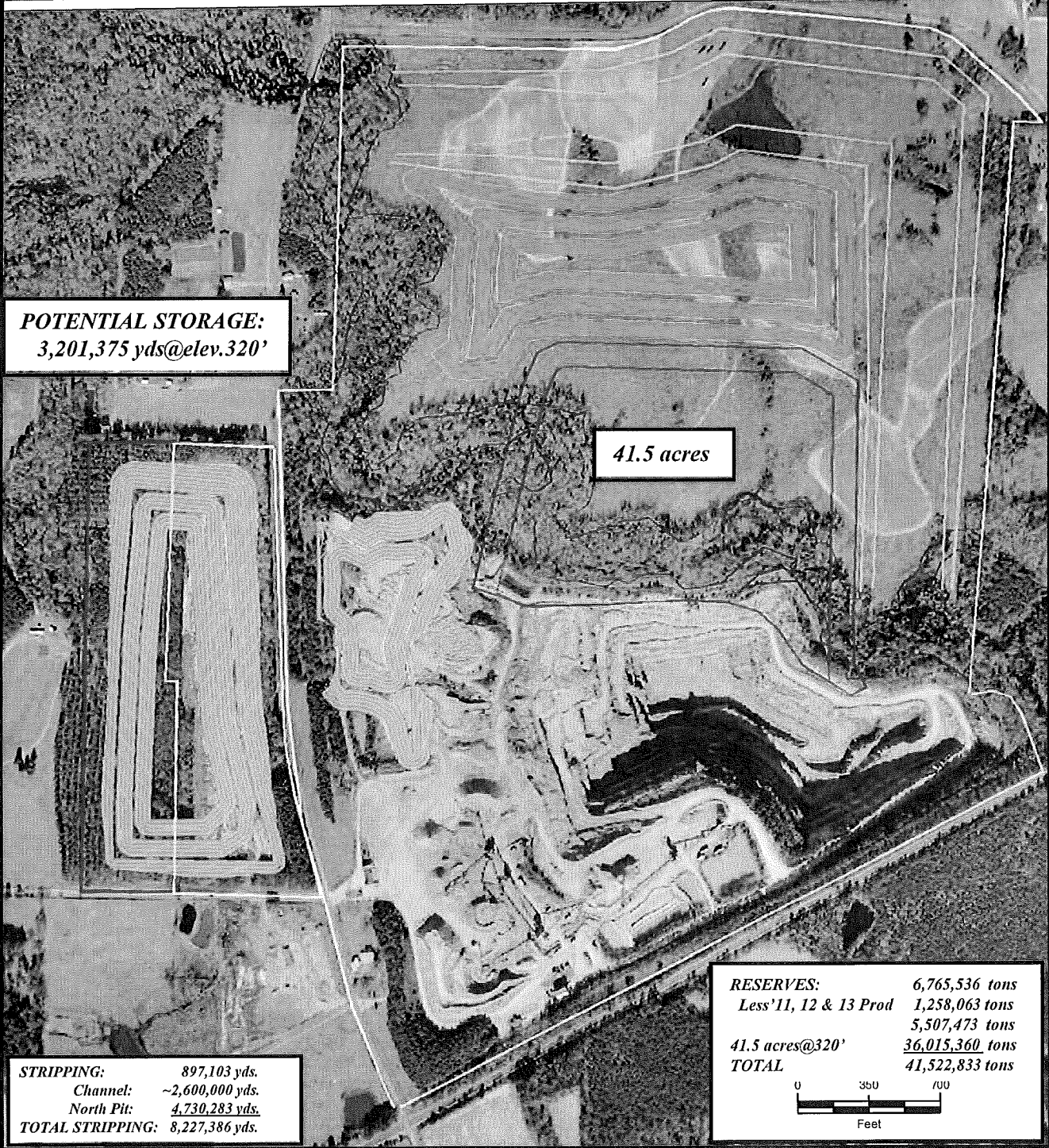
Date: Mar 2014

Drwn/Chkd: KT/RT

Figure: 1.5

**TOTAL STORAGE:**  
8,144,186 yds.

**POTENTIAL STORAGE:**  
3,951,800 yds.



**POTENTIAL STORAGE:**  
3,201,375 yds@elev.320'

**41.5 acres**

**STRIPPING:** 897,103 yds.  
Channel: ~2,600,000 yds.  
North Pit: 4,730,283 yds.  
**TOTAL STRIPPING:** 8,227,386 yds.

**RESERVES:** 6,765,536 tons  
Less '11, 12 & 13 Prod 1,258,063 tons  
5,507,473 tons  
41.5 acres@320' 36,015,360 tons  
**TOTAL** 41,522,833 tons



Source: Image and Features provided by Martin Marietta Materials.

Disclaimer: The information depicted on this figure is for informational purposes only and was not prepared for, and is not suitable for legal or engineering purposes.

**ENVIRONMENTAL SERVICES, INC.**  
524 S. New Hope Road  
Raleigh, North Carolina 27610  
(919) 212-1760  
(919) 212-1707 FAX  
www.environmentalservicesinc.com

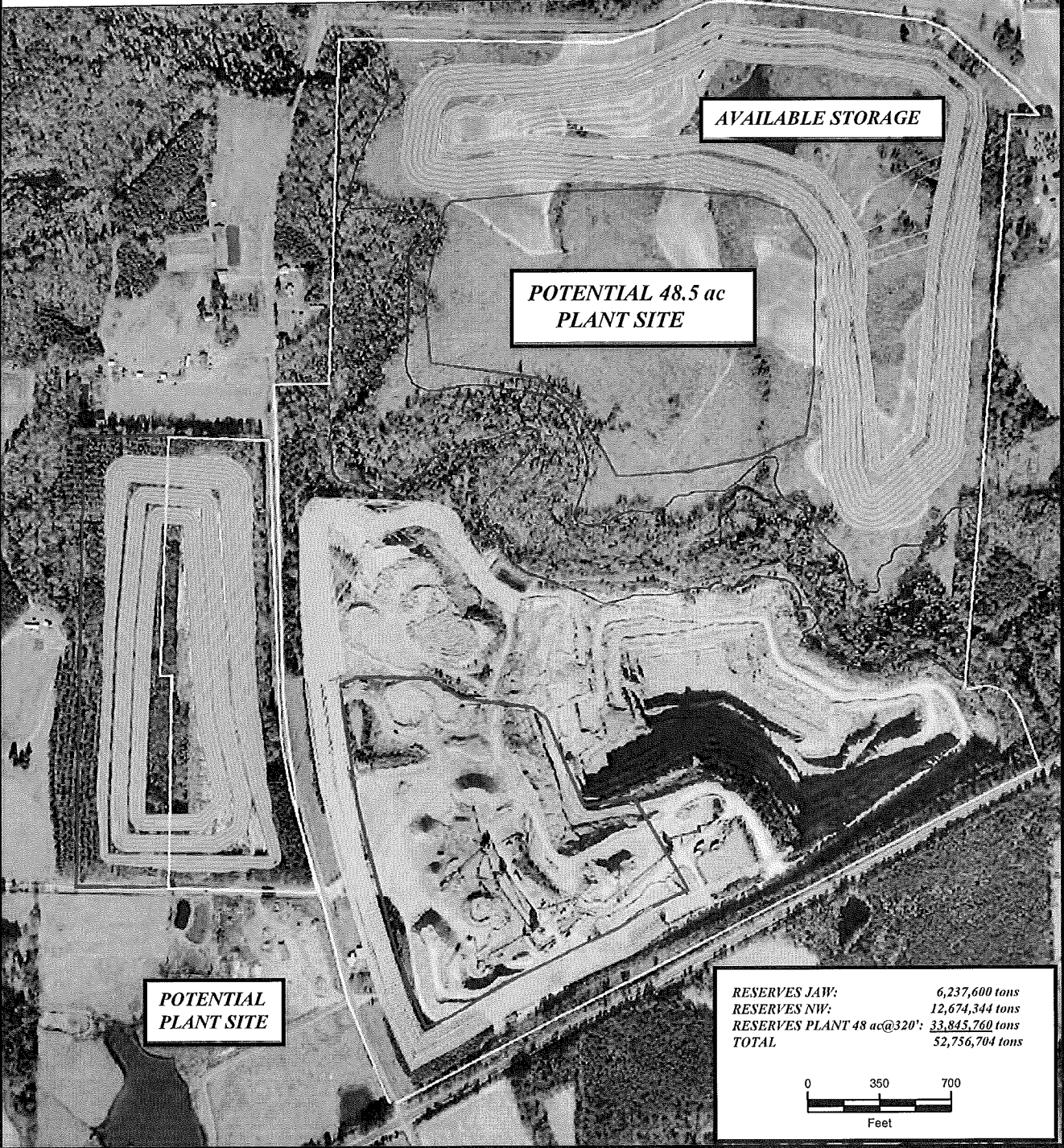
3.1.6 Narrow Pit Expansion through Wetlands  
**Benson Quarry**  
Johnston County, North Carolina

Project: ER12191.01  
Date: Mar 2014  
Drwn/Chkd: KT/RT  
Figure: 1.6

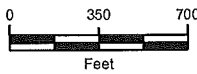


RESERVES JAW: 6,237,600 tons  
 RESERVES NW: 12,674,344 tons  
 RESERVES PLANT 48 ac@320': 33,845,760 tons  
 TOTAL 52,756,704 tons

**TOTAL STORAGE: 8,737,477 yds**



RESERVES JAW: 6,237,600 tons  
 RESERVES NW: 12,674,344 tons  
 RESERVES PLANT 48 ac@320': 33,845,760 tons  
 TOTAL 52,756,704 tons



Source: Image and Features provided by Martin Marietta Materials.

Disclaimer: The information depicted on this figure is for informational purposes only and was not prepared for, and is not suitable for legal or engineering purposes.



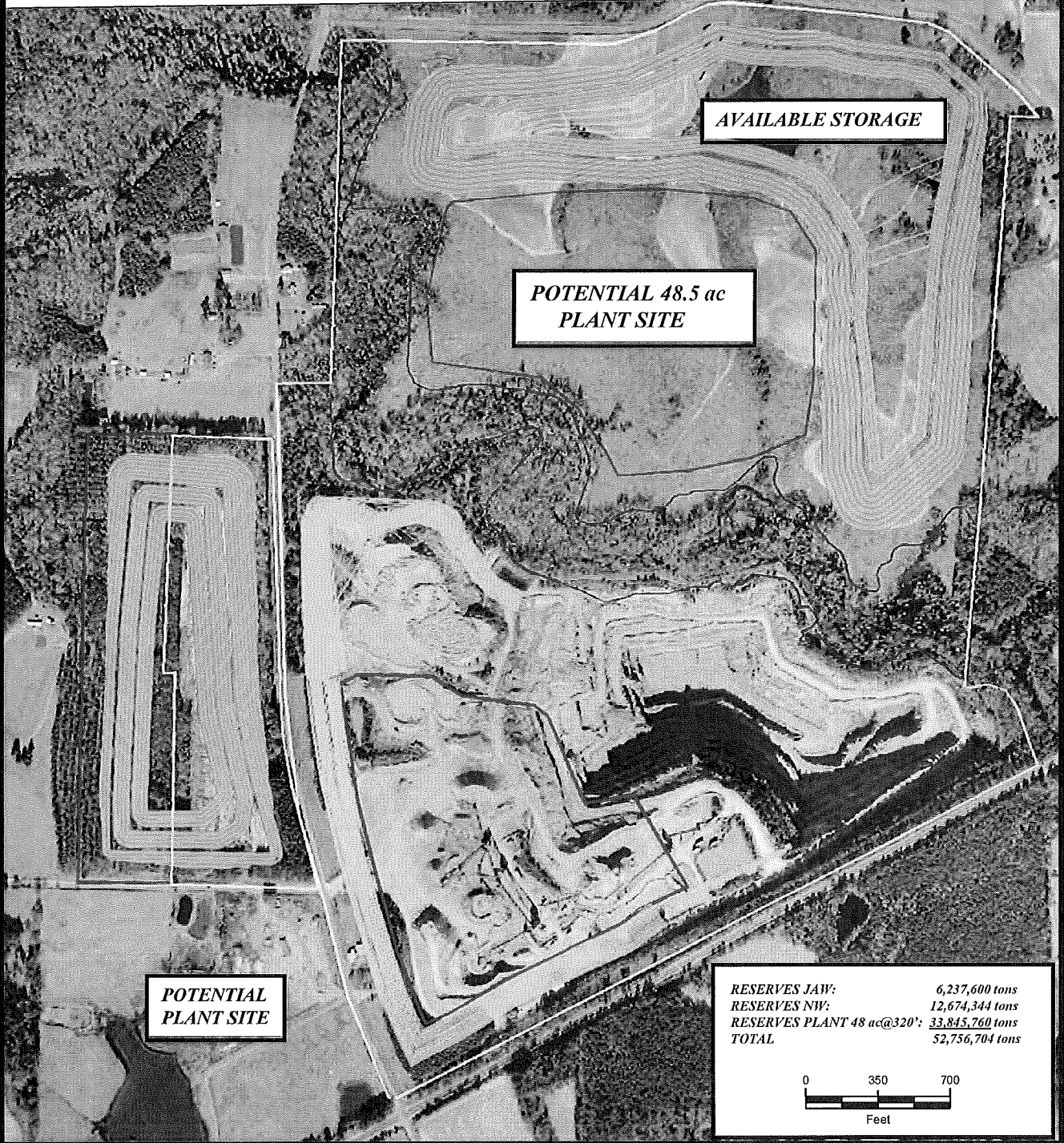
**ENVIRONMENTAL SERVICES, INC.**  
 524 S. New Hope Road  
 Raleigh, North Carolina 27610  
 (819) 212-1760  
 (919) 212-1707 FAX  
 www.environmentalservicesinc.com

3.1.7 New Pit on Johnson Property  
**Benson Quarry**  
 Johnston County, North Carolina

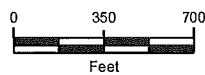
Project: ER12191.01  
 Date: Mar 2014  
 Drwn/Chkd: KT/RT  
 Figure: 1.7

RESERVES JAW: 6,237,600 tons  
 RESERVES NW: 12,674,344 tons  
 RESERVES PLANT 48 ac@320': 33,845,760 tons  
 TOTAL 52,756,704 tons

**TOTAL STORAGE: 8,737,477 yds**



RESERVES JAW: 6,237,600 tons  
 RESERVES NW: 12,674,344 tons  
 RESERVES PLANT 48 ac@320': 33,845,760 tons  
 TOTAL 52,756,704 tons



Source: Image and Features provided by Martin Marietta Materials.

Disclaimer: The information depicted on this figure is for informational purposes only and was not prepared for, and is not suitable for legal or engineering purposes.

**ENVIRONMENTAL SERVICES, INC.**  
 524 S. New Hope Road  
 Raleigh, North Carolina 27610  
 (919) 212-1780  
 (919) 212-1707 FAX  
[www.environmentalservicesinc.com](http://www.environmentalservicesinc.com)

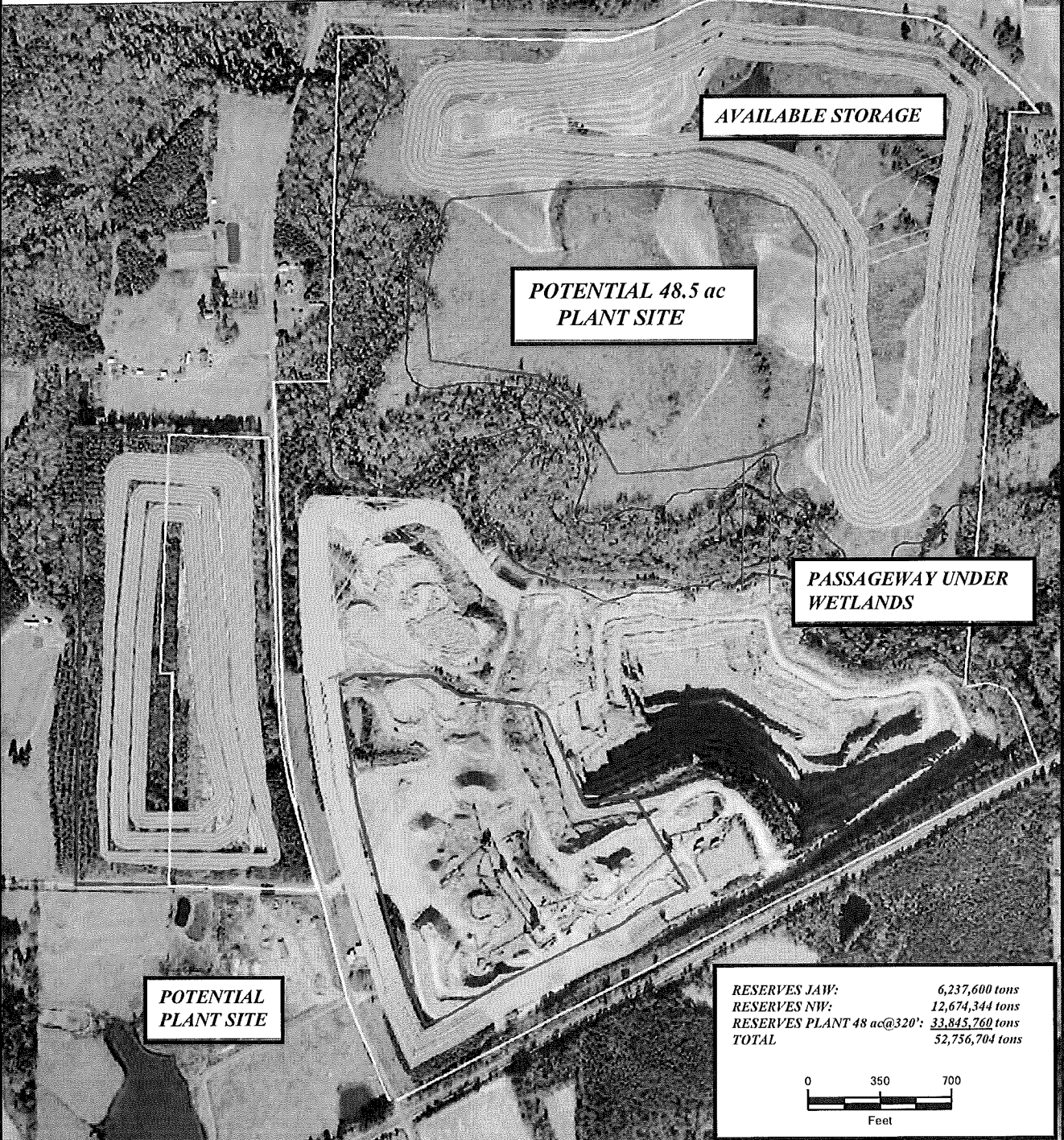
3.1.8 Relocation of Plant to Johnson Property  
**Benson Quarry**  
 Johnston County, North Carolina

Project:	ER12191.01
Date:	Mar 2014
Drwn/Chkd:	KT/RT
Figure:	1.8

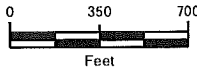


RESERVES JAW: 6,237,600 tons  
 RESERVES NW: 12,674,344 tons  
 RESERVES PLANT 48 ac@320': 33,845,760 tons  
 TOTAL 52,756,704 tons

**TOTAL STORAGE: 8,737,477 yds**



RESERVES JAW: 6,237,600 tons  
 RESERVES NW: 12,674,344 tons  
 RESERVES PLANT 48 ac@320': 33,845,760 tons  
 TOTAL 52,756,704 tons



Source: Image and Features provided by Martin Marietta Materials.

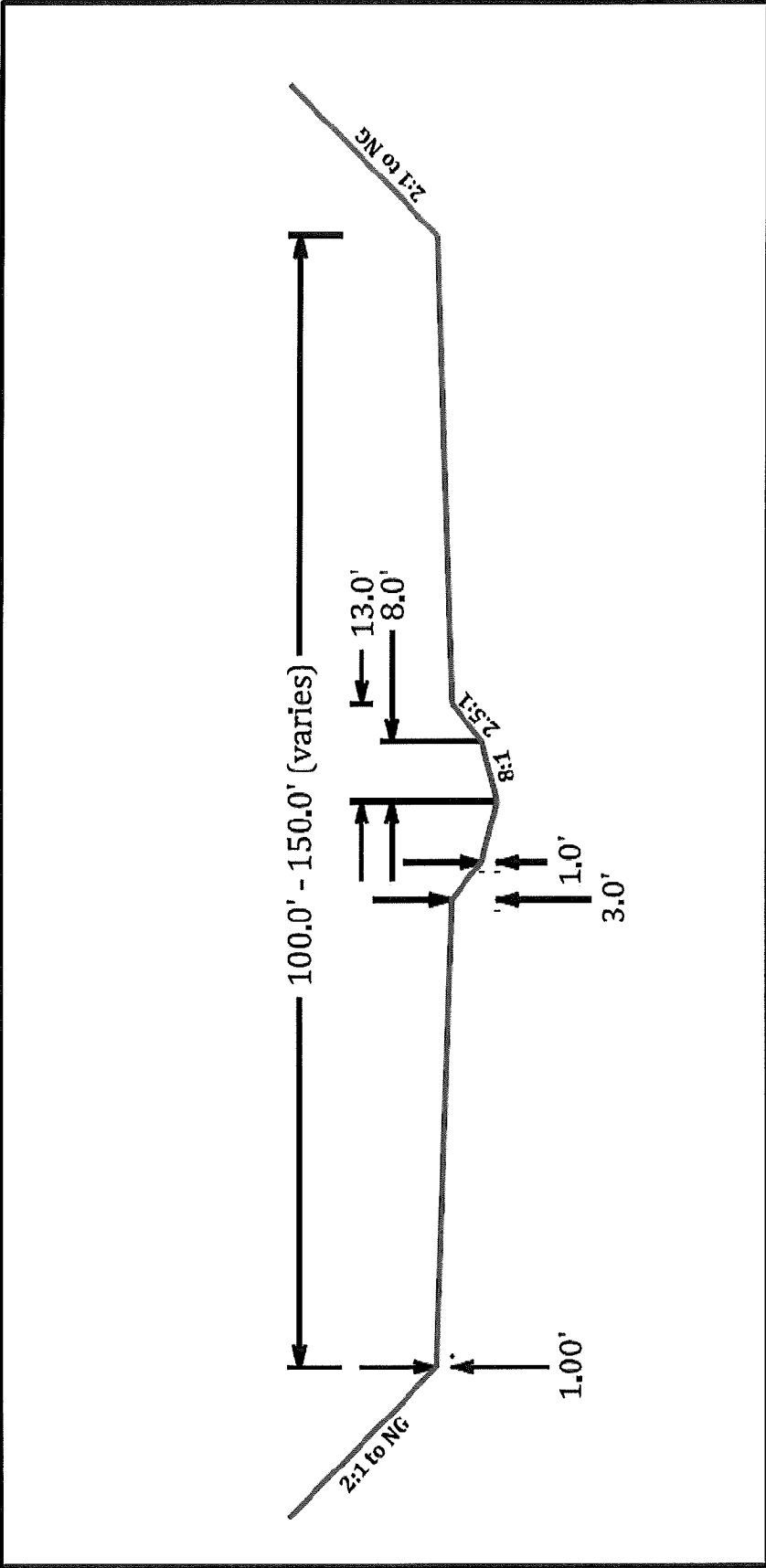
Disclaimer: The information depicted on this figure is for informational purposes only and was not prepared for, and is not suitable for legal or engineering purposes.

**ENVIRONMENTAL SERVICES, INC.**  
 524 S. New Hope Road  
 Raleigh, North Carolina 27610  
 (919) 212-1760  
 (919) 212-1707 FAX  
 www.environmentalservicesinc.com

3.1.9 Passageway Under Wetlands  
**Benson Quarry**  
 Johnston County, North Carolina

Project:	ER12191.01
Date:	Mar 2014
Drwn/Chkd:	KT/RT
Figure:	1.9

RECEIVED  
APR 08 2014  
RALEIGH REGULATORY  
FIELD OFFICE

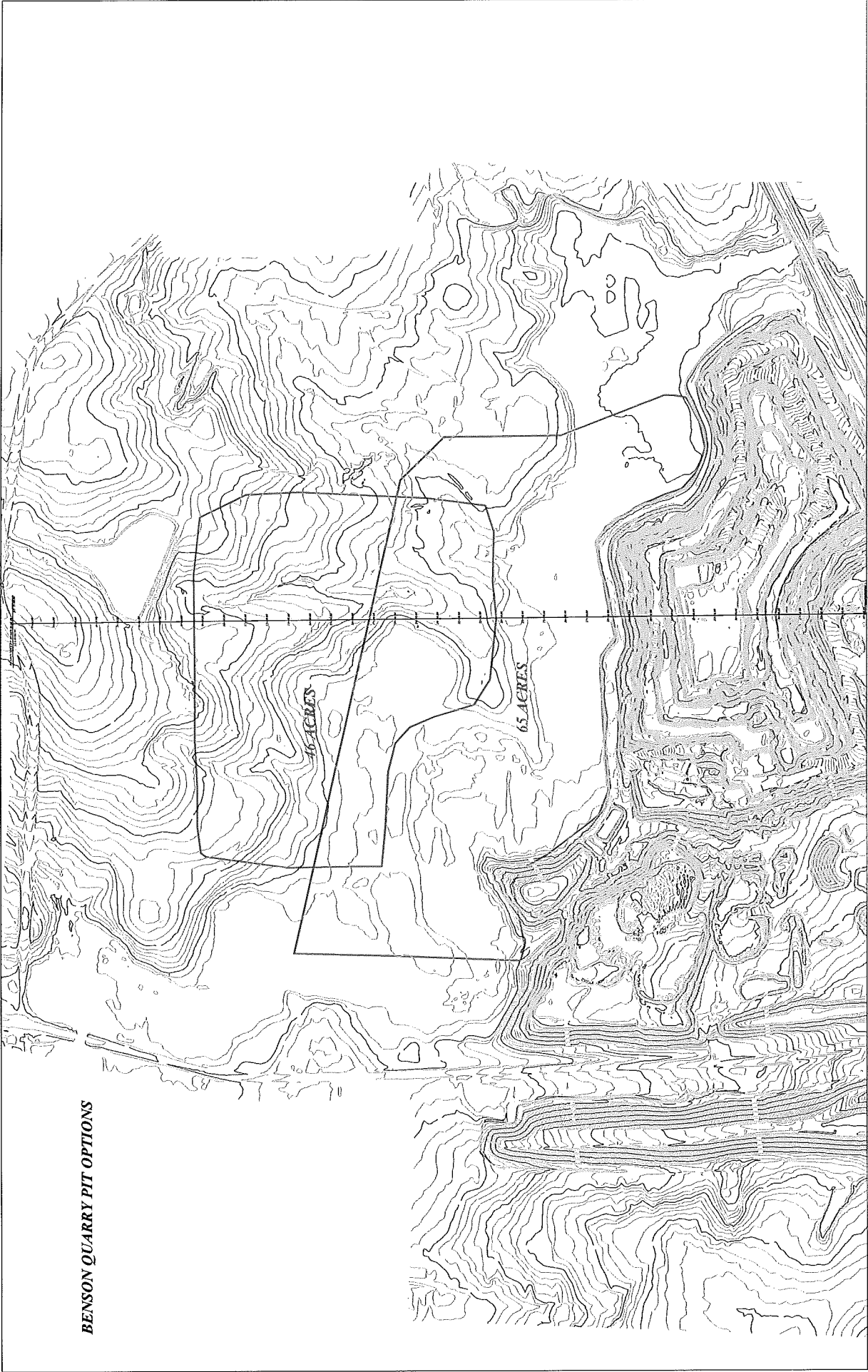


Stony Fork Diversion Channel  
Typical Section



CROSS-SECTION No. 1





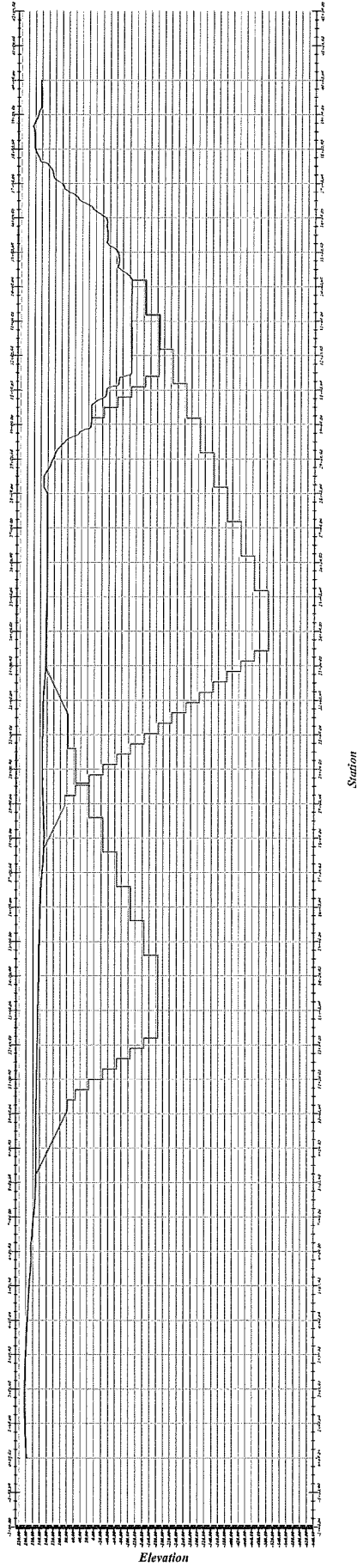
**BENSON QUARRY PIT OPTIONS**

**CROSS-SECTION No. 2A**

# BENSON QUARRY PIT OPTIONS

PIT 1 NEW PIT

PIT 2 MINE THRU



CROSS-SECTION No. 2B

