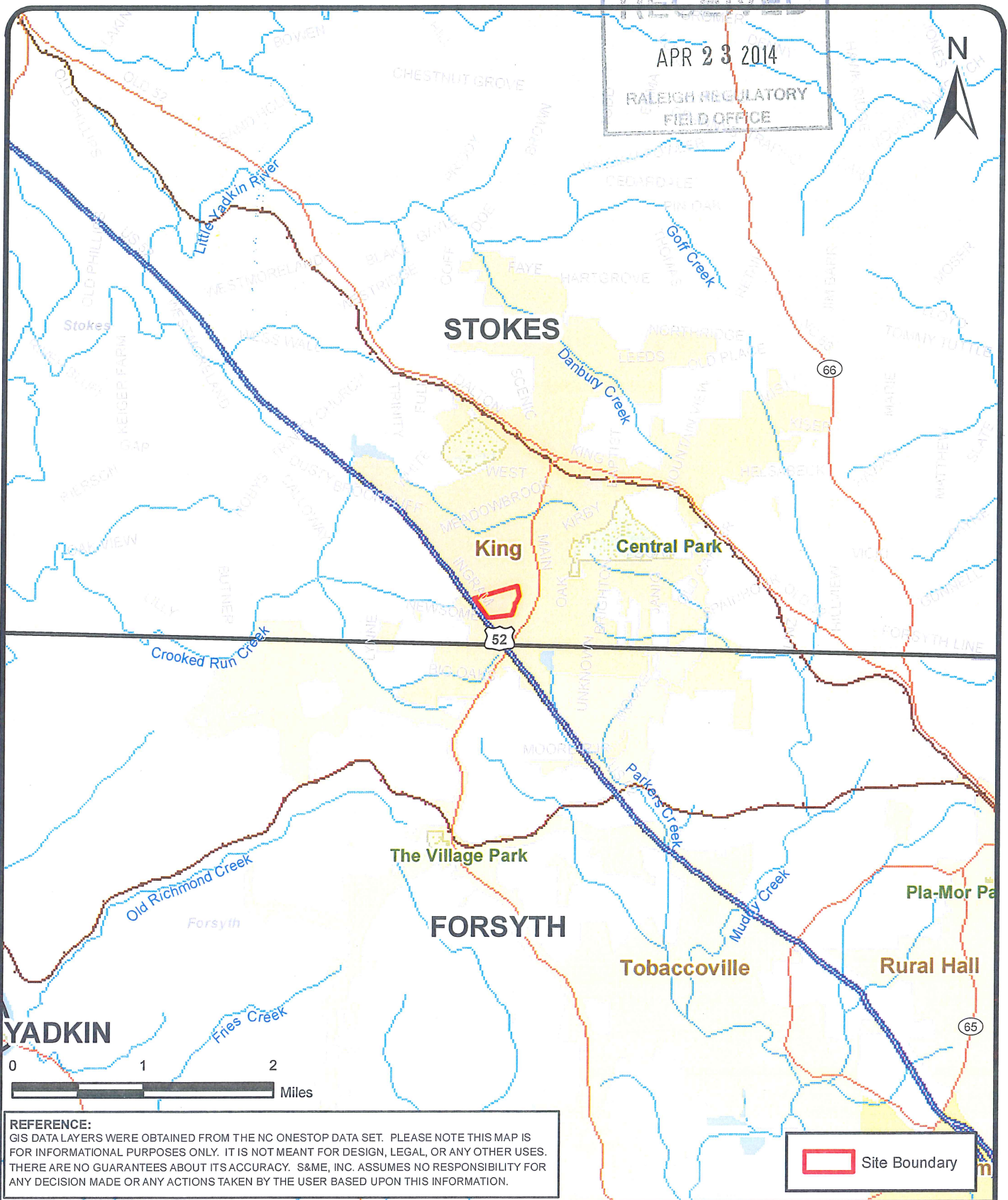



RECEIVED
APR 23 2014
RALEIGH REGULATORY
FIELD OFFICE



REFERENCE:
GIS DATA LAYERS WERE OBTAINED FROM THE NC ONESTOP DATA SET. PLEASE NOTE THIS MAP IS FOR INFORMATIONAL PURPOSES ONLY. IT IS NOT MEANT FOR DESIGN, LEGAL, OR ANY OTHER USES. THERE ARE NO GUARANTEES ABOUT ITS ACCURACY. S&ME, INC. ASSUMES NO RESPONSIBILITY FOR ANY DECISION MADE OR ANY ACTIONS TAKEN BY THE USER BASED UPON THIS INFORMATION.

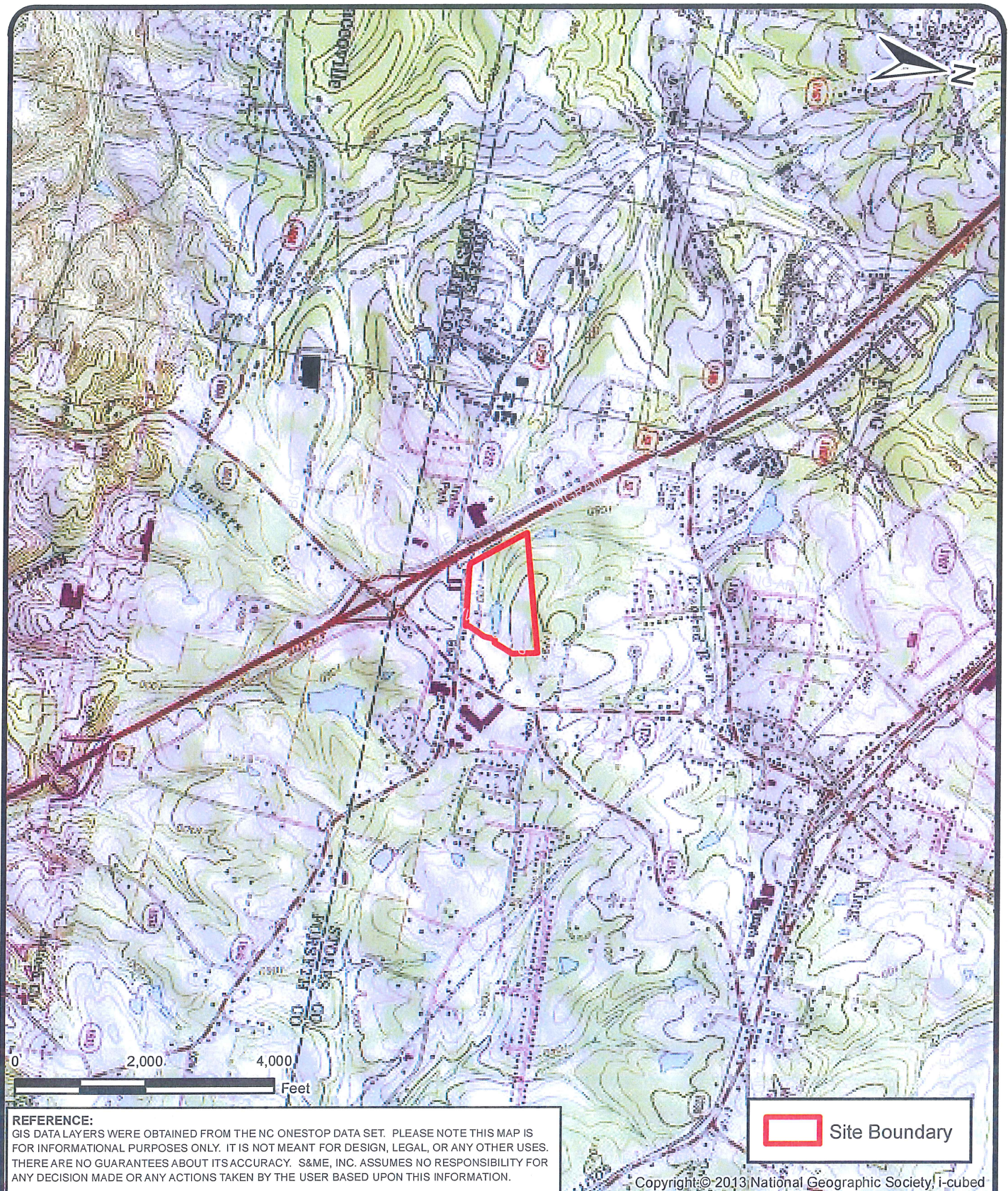
 Site Boundary

SCALE: 1 inch = 1 mile
DATE: 03.10.14
DRAWN BY: hac
PROJECT NO: 1357-13-024

 **S&ME**
WWW.SMEINC.COM
ENGINEERING LICENSE NO: F-0176

SITE VICINITY MAP
39-Acre Property
King, N.C.

FIGURE NO.
1



SCALE: 1 inch = 2000 feet

DATE: 03.10.14

DRAWN BY: hac

PROJECT NO: 1357-13-024

S&ME
 WWW.SMEINC.COM

ENGINEERING LICENSE NO: F-0176

USGS TOPOGRAPHIC MAP

39-Acre Property
 King, N.C.

FIGURE NO.

2



REFERENCE:

GIS DATA LAYERS WERE OBTAINED FROM THE NC ONESTOP DATA SET. PLEASE NOTE THIS MAP IS FOR INFORMATIONAL PURPOSES ONLY. IT IS NOT MEANT FOR DESIGN, LEGAL, OR ANY OTHER USES. THERE ARE NO GUARANTEES ABOUT ITS ACCURACY. S&ME, INC. ASSUMES NO RESPONSIBILITY FOR ANY DECISION MADE OR ANY ACTIONS TAKEN BY THE USER BASED UPON THIS INFORMATION.

ri, DigitalGlobe, GeoEye, i-cubed, g, Aerogrid, IGN, IGP, swisstopo, a

- Site Boundary
- Streams

SCALE: 1 inch = 250 feet

DATE: 03.10.14

DRAWN BY: hac

PROJECT NO: 1357-13-024



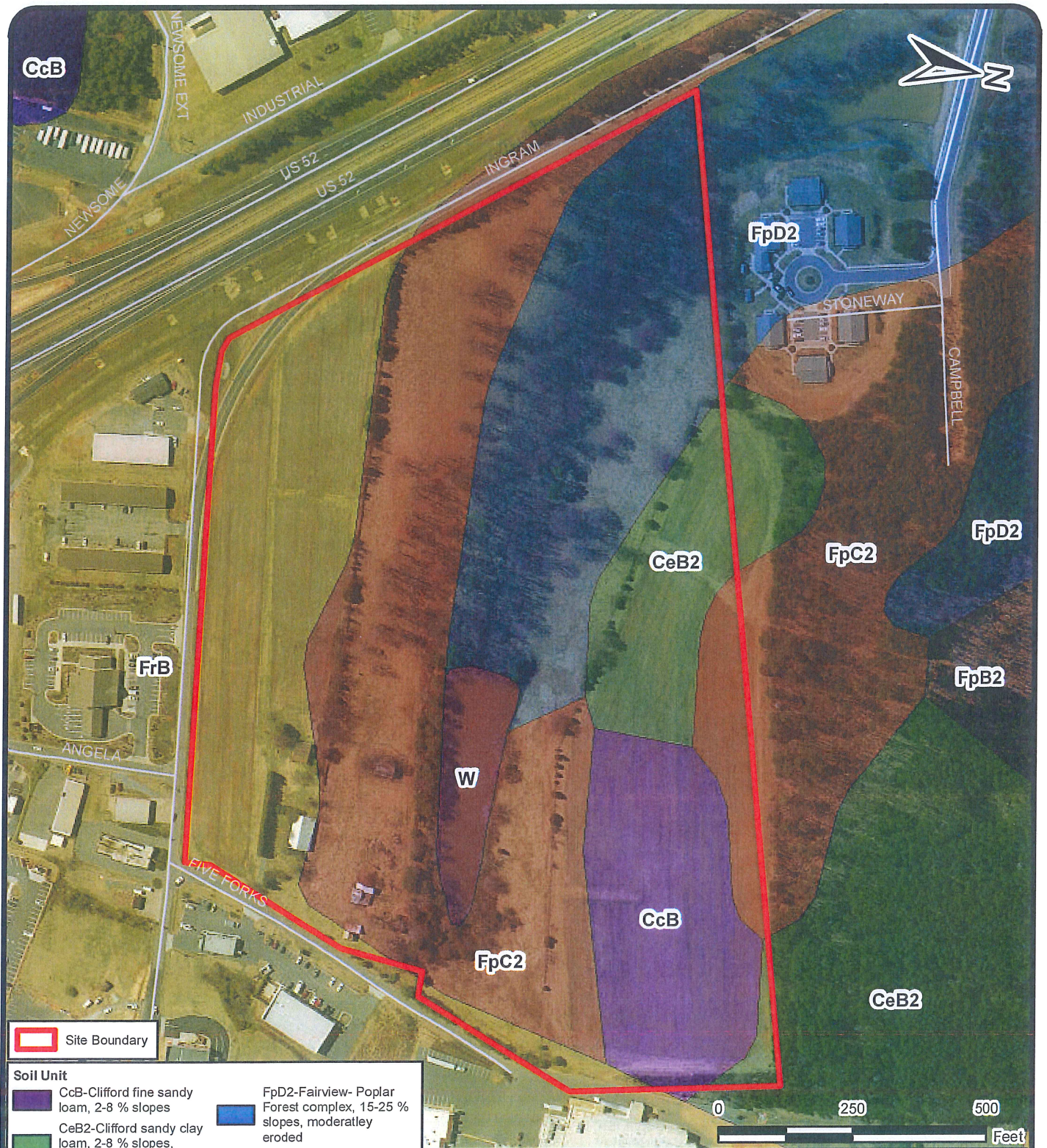
ENGINEERING LICENSE NO: F-0176

2012 AERIAL PHOTOGRAPH

**39-Acre Property
King, N.C.**

FIGURE NO.

3



SCALE: 1 inch = 250 feet

DATE: 03.10.14

DRAWN BY: hac

PROJECT NO: 1357-13-024



ENGINEERING LICENSE NO: F-0176

STOKES COUNTY SOIL SURVEY

39-Acre Property
King, N.C.

FIGURE NO.

4