



Prepared for:



Project:

**ANN STREET
LANDFILL
DELINEATION**

Cumberland County, NC

Title:

LOCATION

Notes:

1. Background imagery sources: Fayetteville, NC (1997), and Vander, NC (1997) 7.5-minute topographic quadrangles (lower inset and primary map frame), and Fayetteville, NC (1986) 30-minute by 60-minute topographic quadrangle (middle inset) provided by the U.S. Geological Survey.

Drawn by: SGD

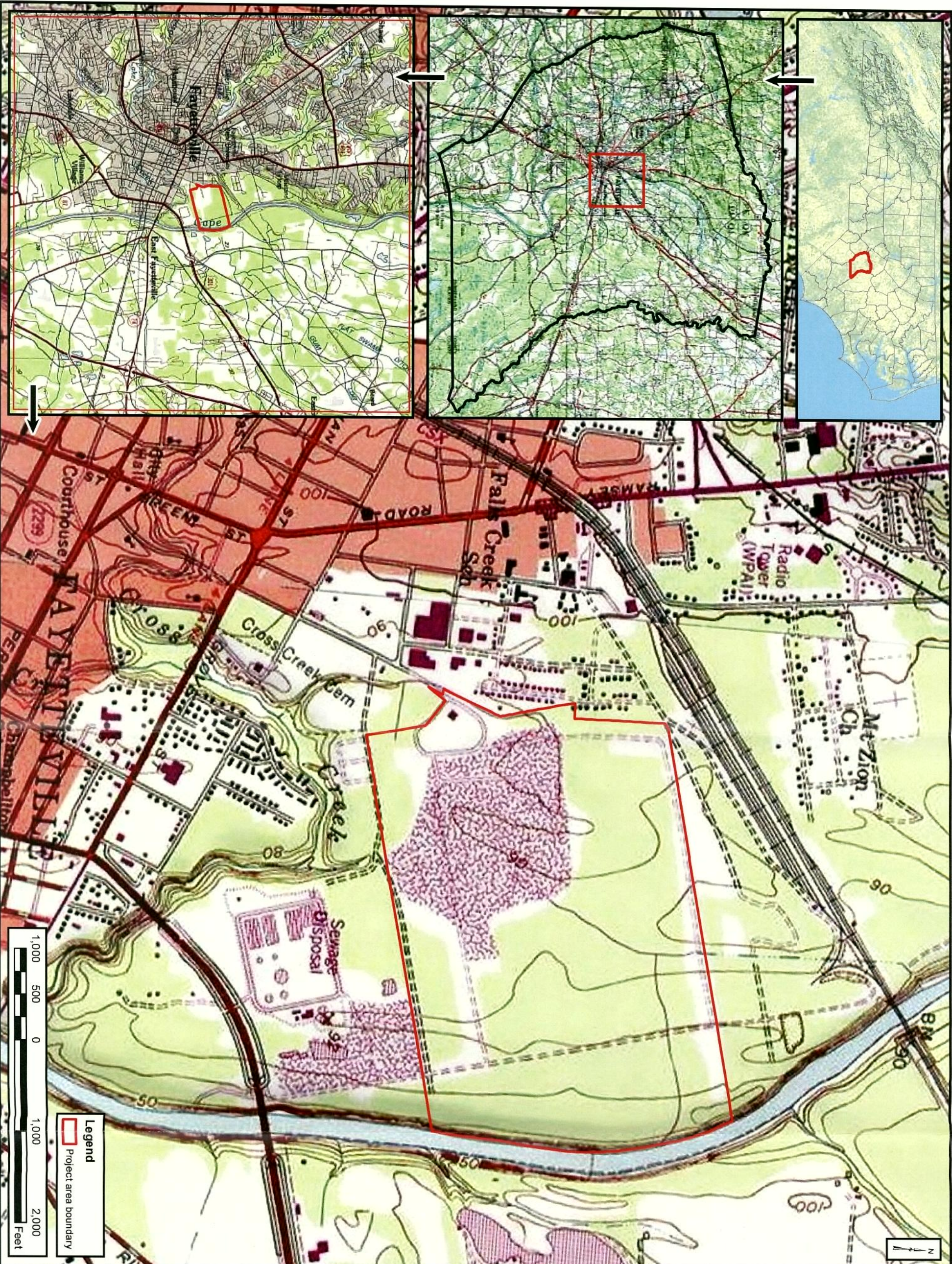
Date: Aug 2013

Scale: 1:12,000

Project No.: 13-016

FIGURE

A-1





Prepared for:



Project:

ANN STREET
LANDFILL
DELINEATION

Cumberland County, NC

Title:

JURISDICTIONAL
AREAS

Notes:

1. Background imagery source: 2010 aerial photography provided by the NC OneMap Program (online, supported by the NC Geographic Coordination Council).
2. 2-foot elevation contours are provided by the NCDOT (online) and derived from 2007 Light Distance and Ranging (LIDAR) data generated by the NC Floodplain Mapping Program.

Drawn by: SGD

Date: Aug 2013

Scale: 1:4800

Project No.: 13-016

FIGURE

A-2