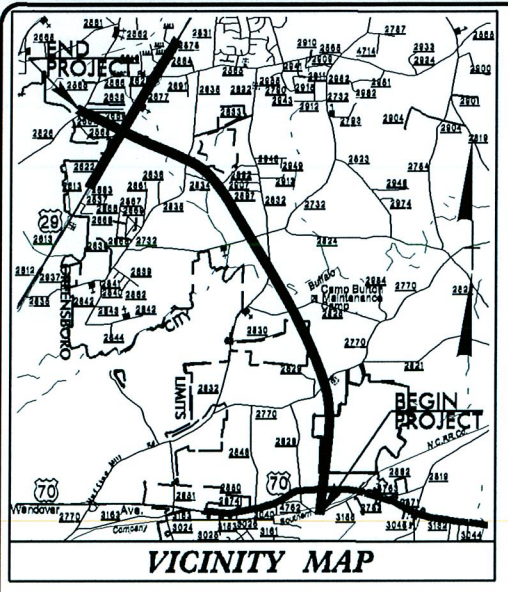


TIP PROJECT: U-2525B



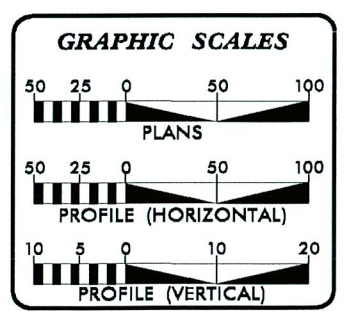
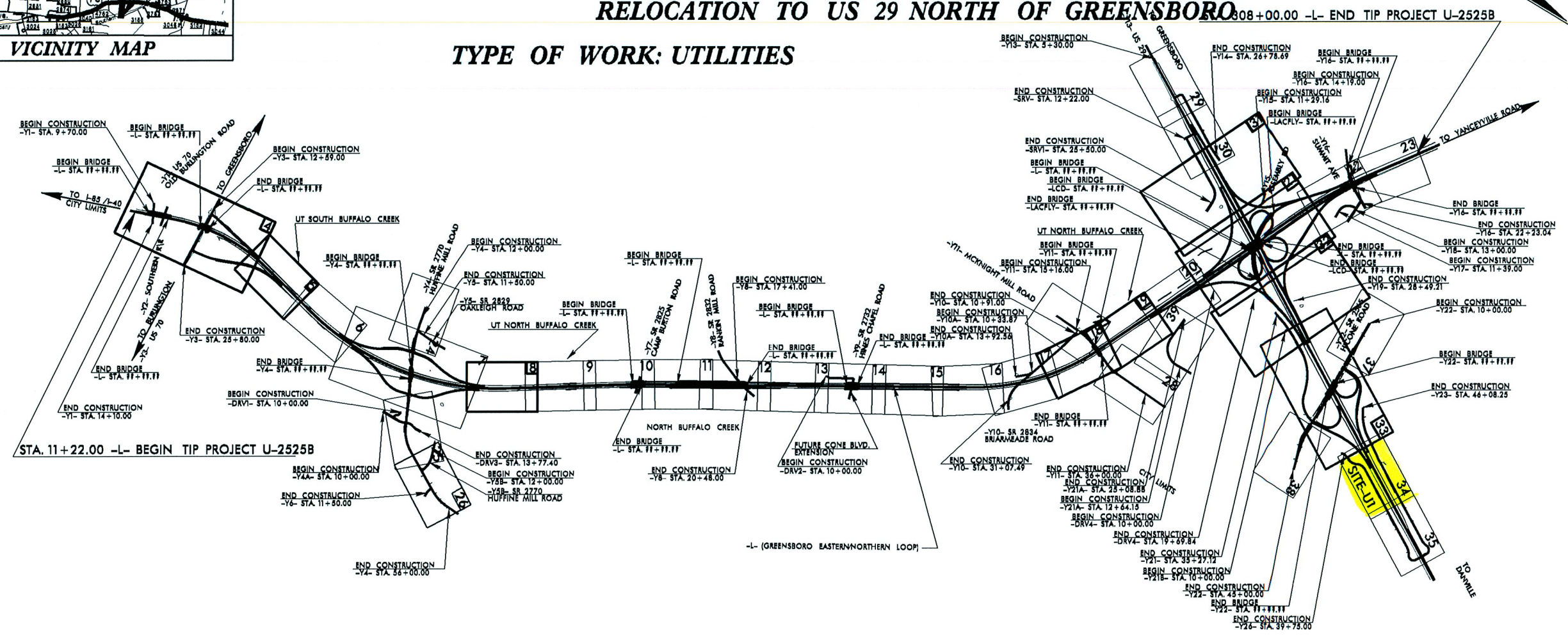
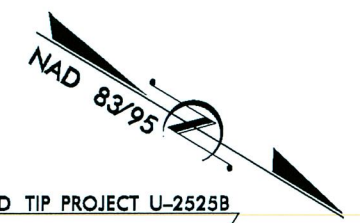
STATE OF NORTH CAROLINA
DIVISION OF HIGHWAYS

**UTILITY ENVIROMENTAL PLANS
GUILFORD COUNTY**

**LOCATION: GREENSBORO EASTERN LOOP FROM NORTH OF US 70
RELOCATION TO US 29 NORTH OF GREENSBORO**

TYPE OF WORK: UTILITIES


T.I.P. NO.	SHEET NO.
U-2525B	UEP-1



INDEX OF SHEETS

SHEET NO.	DESCRIPTION
UEP-1	TITLE SHEET
UEP-2	UTILITY IMPACT SITE 1

Utility Permit Drawing
Sheet 1 of 3



PREPARED IN THE OFFICE OF:
**DIVISION OF HIGHWAYS
UTILITIES UNIT
UTILITIES ENGINEERING**

1555 MAIL SERVICES CENTER
RALEIGH, NC 27699-1555
PHONE (919) 707-6690
FAX (919) 250-4151

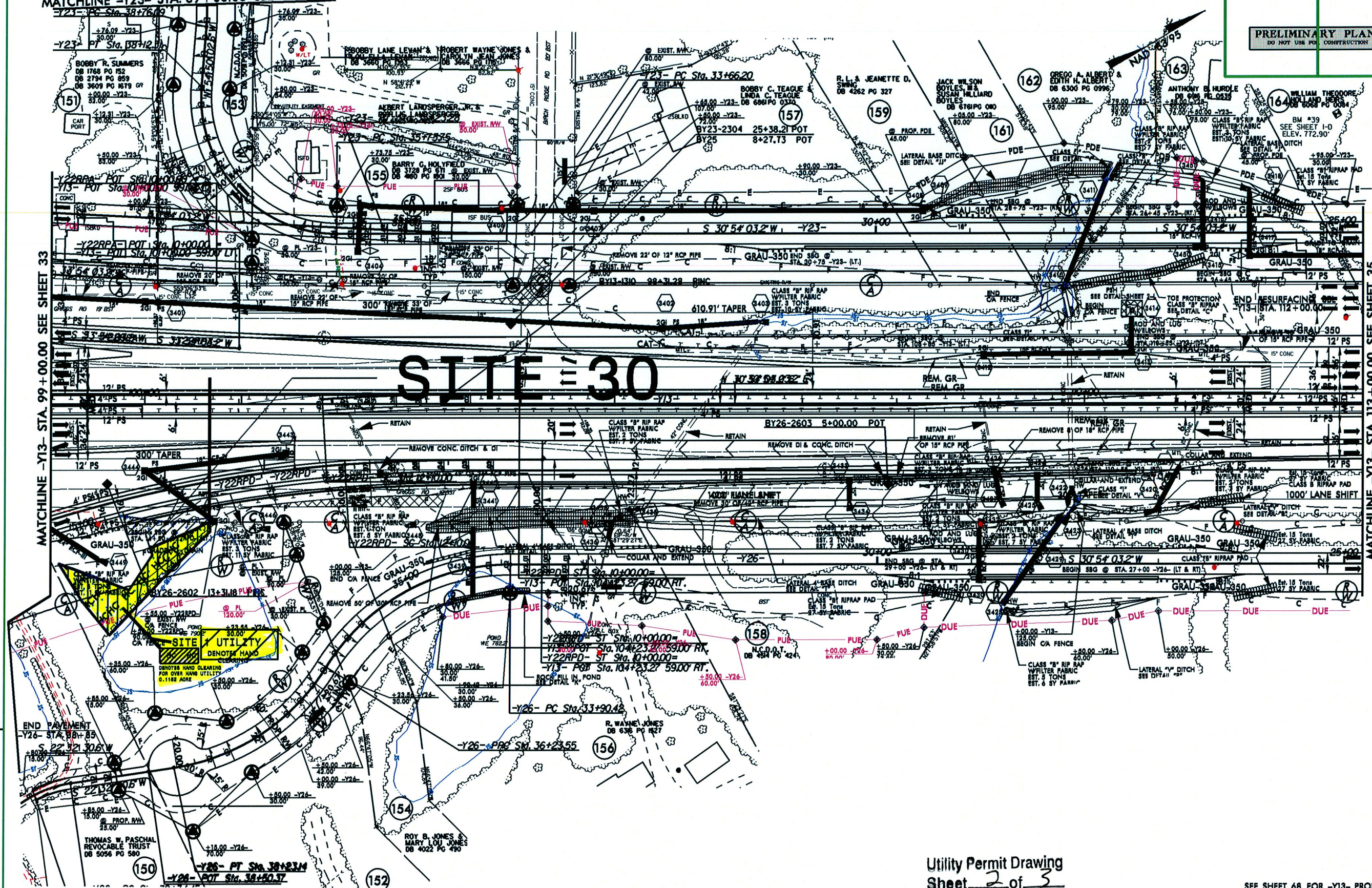
Roger Worthington, P.E. UTILITIES SECTION ENGINEER
Steve McKee, P.E. UTILITIES SQUAD LEADER PROJECT ENGINEER
Jamshid Hafshejani UTILITIES PROJECT DESIGNER

18-OCT-2013 10:55
RA\Utilities\Engineering\NEU\Permit Plans and Narrative\U-2525b_Ut-UCI_tsh.dgn
\$\$\$\$\$USER\$NAME\$\$\$\$\$

5/14/99

PROJECT REFERENCE NO. U-2525B	SHEET NO. UEP-2
RW SHEET NO.	
ROADWAY DESIGN ENGINEER	HYDRAULICS ENGINEER
PRELIMINARY PLANS DO NOT USE FOR CONSTRUCTION	

MATCHLINE -Y23- STA. 39+00.00 SEE SHEET 37



06-24-13 R/W REVISION (DWG) - REVISED THE TCE TO INCLUDE THE POND ON PARCEL 150 (THOMAS W. PASCHAL AND PARCEL 152 (JANICE J. WILES). ADDED DUE AT -Y23- STA. 26+68.00 RT. ON PARCEL 163 (ANTHONY B. HURDLE), REVISED PUE TO TCE FROM -Y26- STA. 34+80.00 TO STA. 38+15.00 LT. ON PARCEL 156 (R. WAYNE JONES), PARCEL 154 (ROY B. JONES & MARY LOU JONES), AND PARCEL 152 (JANICE J. WILES).

SEE SHEET 68 FOR -Y13- PROFILE
 SEE SHEET 82 FOR -Y22RPA- PROFILE
 SEE SHEET 83 FOR -Y22RPD- PROFILE
 SEE SHEET 85 FOR -Y23- PROFILE
 SEE SHEET 87 FOR -Y26- PROFILE

