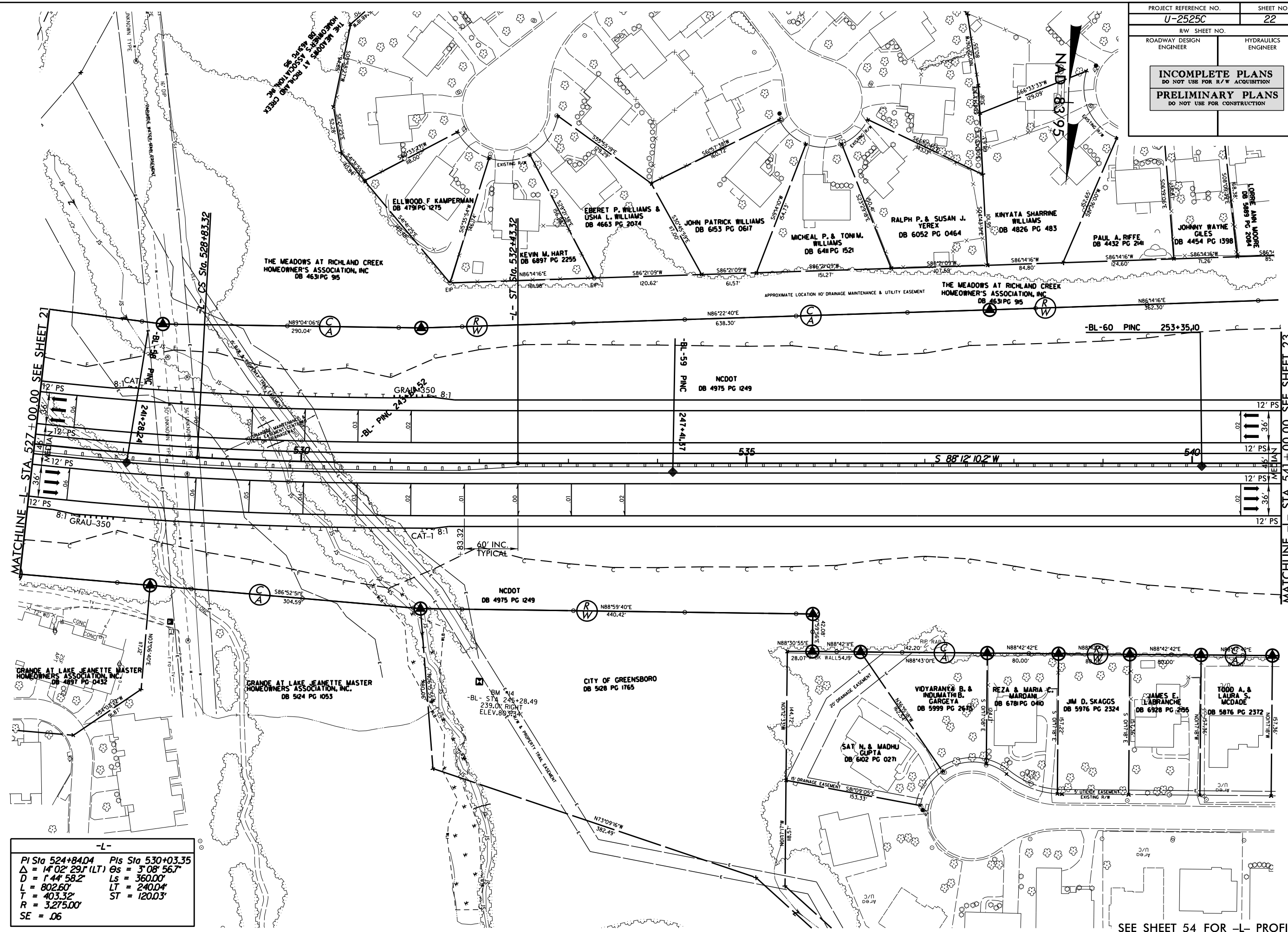


5/14/99
13-MAY-2013 08:13
P:\PROJECTS\U-2525C-rdy_psh22.dgn

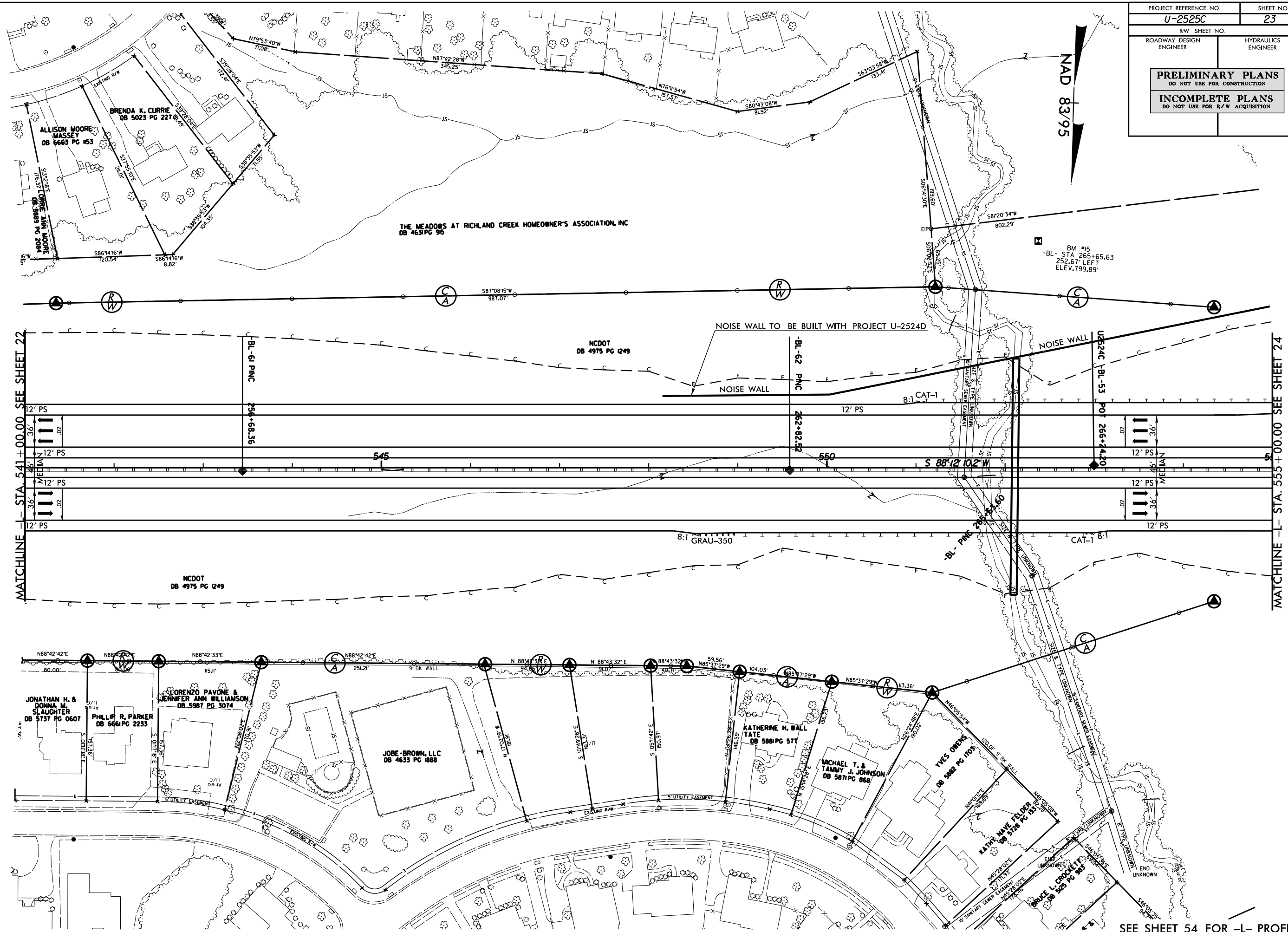


-L-	
PI Sta 524+84.04	Pis Sta 530+03.35
$\Delta = 14^{\circ} 02' 29''$ (LT)	$\theta_s = 3^{\circ} 08' 56.7''$
$D = 144' 58.2''$	$L_s = 360.00'$
$L = 802.60'$	$LT = 240.04'$
$T = 403.32'$	$ST = 120.03'$
$R = 3,275.00'$	
$SE = .06$	

SEE SHEET 54 FOR -L- PROFILE

5/14/19

PROJECT REFERENCE NO.	U-2525C	SHEET NO.	23
ROADWAY DESIGN ENGINEER	RW SHEET NO.		HYDRAULICS ENGINEER
PRELIMINARY PLANS DO NOT USE FOR CONSTRUCTION			
INCOMPLETE PLANS DO NOT USE FOR R/W ACQUISITION			

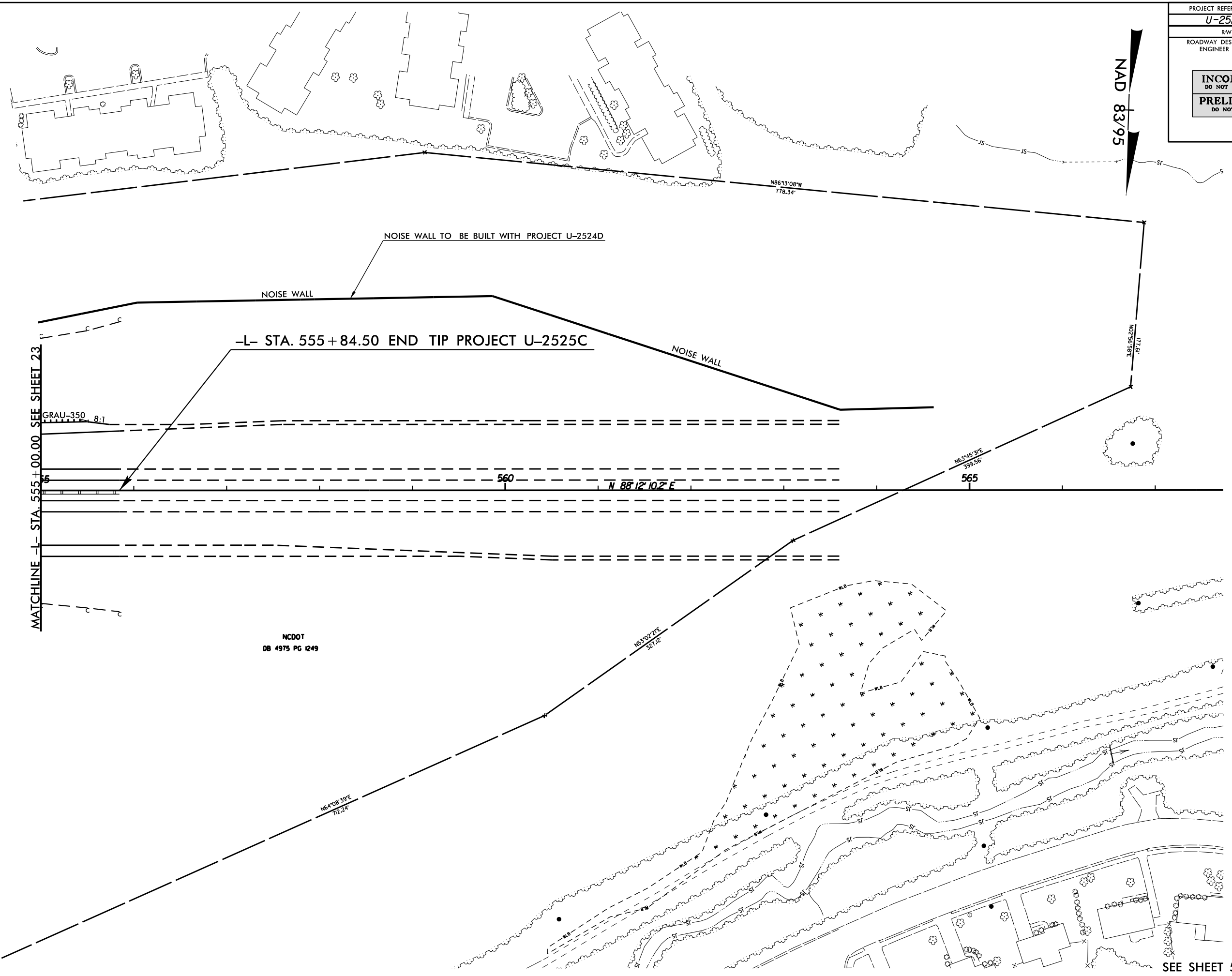


13-MAY-2013 08:13
P:\PROJECTS\U-2525C-rdw-psht23.dgn
3:38:58 PM

SEE SHEET 54 FOR -L- PROFILE

5/14/99

PROJECT REFERENCE NO. U-2525C	SHEET NO. 24
RW SHEET NO.	
ROADWAY DESIGN ENGINEER	HYDRAULICS ENGINEER
INCOMPLETE PLANS DO NOT USE FOR R/W ACQUISITION	
PRELIMINARY PLANS DO NOT USE FOR CONSTRUCTION	

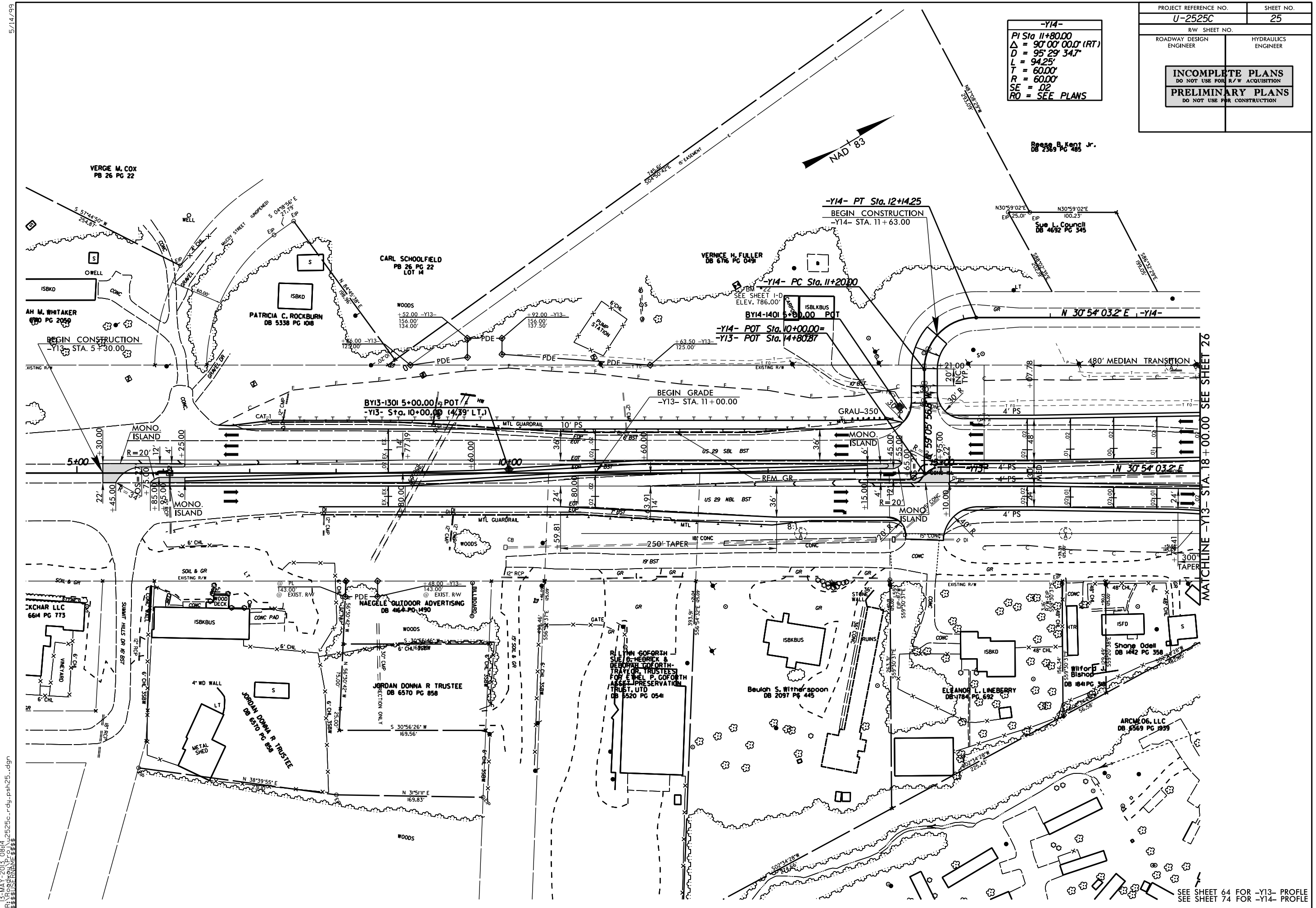


NAD 83/95

13-MAY-2013 08:14
P:\PROJECTS\U-2525C\U-2525C-rdy_psh24.dgn

SEE SHEET 55 FOR -L- PROFILE

-Y14-
 PI Sta 11+80.00
 $\Delta = 90^{\circ} 00' 00''$ (RT)
 $D = 95' 29' 34''$
 $L = 94.25'$
 $T = 60.00'$
 $R = 60.00'$
 $SE = .02$
 $RO = \text{SEE PLANS}$



MATCHLINE -Y13- STA. 18+00.00 SEE SHEET 26

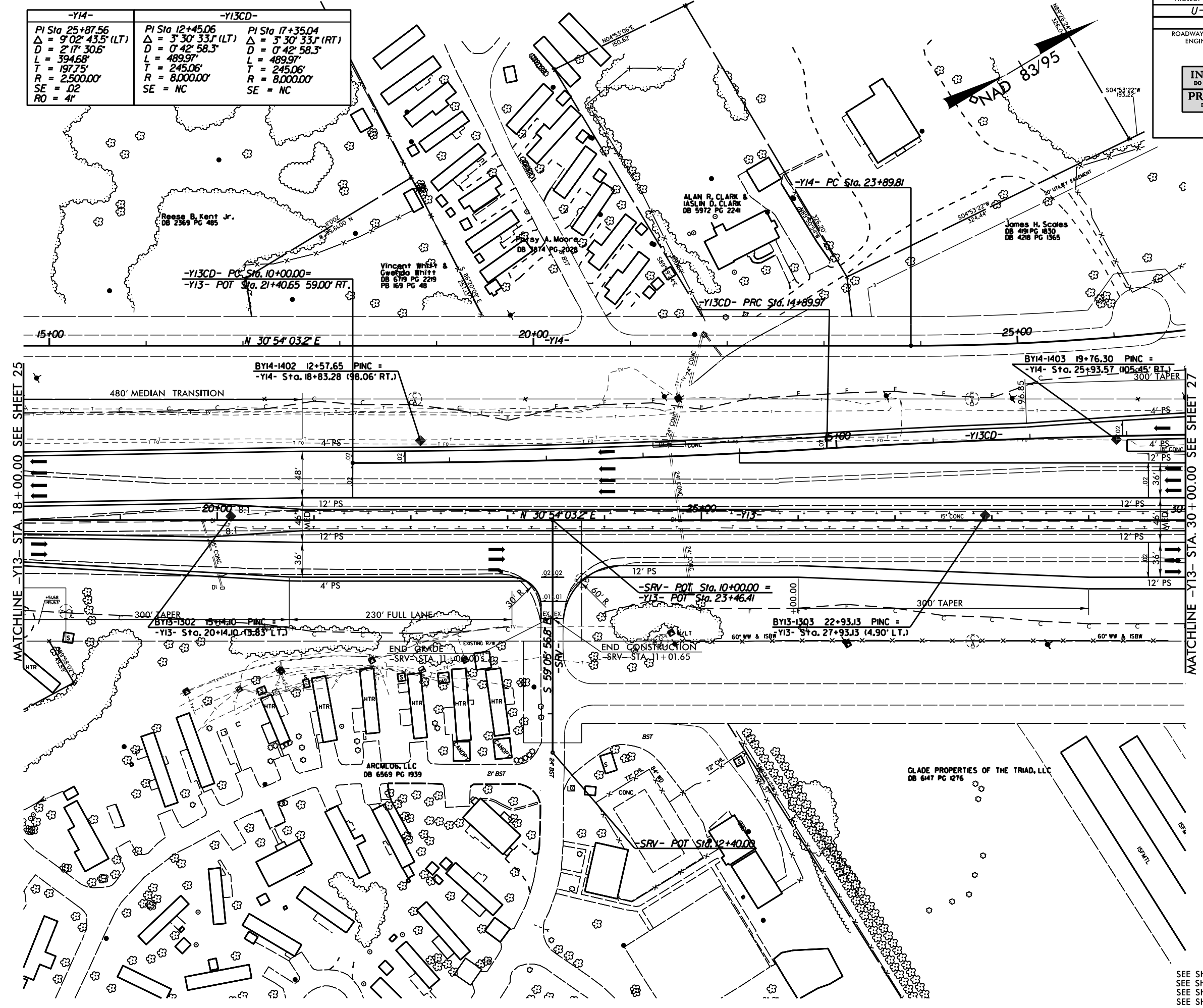
SEE SHEET 64 FOR -Y13- PROFILE
 SEE SHEET 74 FOR -Y14- PROFILE

13-MAY-2013 08:14
 P:\PROJECTS\U-2525C-rdy_psh25.dgn
 E:\BUSINESS\ENGINEER

5/14/09

-Y14-	-Y13CD-	
PI Sta 25+87.56	PI Sta 12+45.06	PI Sta 17+35.04
$\Delta = 9^{\circ}02'43.5"$ (LT)	$\Delta = 3^{\circ}30'33.1"$ (LT)	$\Delta = 3^{\circ}30'33.1"$ (RT)
D = 2'17'30.6"	D = 0'42'58.3"	D = 0'42'58.3"
L = 394.68'	L = 489.97'	L = 489.97'
T = 197.75'	T = 245.06'	T = 245.06'
R = 2,500.00'	R = 8,000.00'	R = 8,000.00'
SE = .02	SE = NC	SE = NC
RO = 4'		

PROJECT REFERENCE NO. U-2525C	SHEET NO. 26
R/W SHEET NO.	
ROADWAY DESIGN ENGINEER	HYDRAULICS ENGINEER
INCOMPLETE PLANS DO NOT USE FOR R/W ACQUISITION PRELIMINARY PLANS DO NOT USE FOR CONSTRUCTION	



MATCHLINE -Y13- STA 18+00.00 SEE SHEET 25

MATCHLINE -Y13- STA. 30+00.00 SEE SHEET 27

SEE SHEET 64 FOR -SRV- PROFILE
 SEE SHEET 65 FOR -Y13- PROFILE
 SEE SHEET 69 FOR -Y13CD- PROFILE
 SEE SHEET 74 FOR -Y14- PROFILE

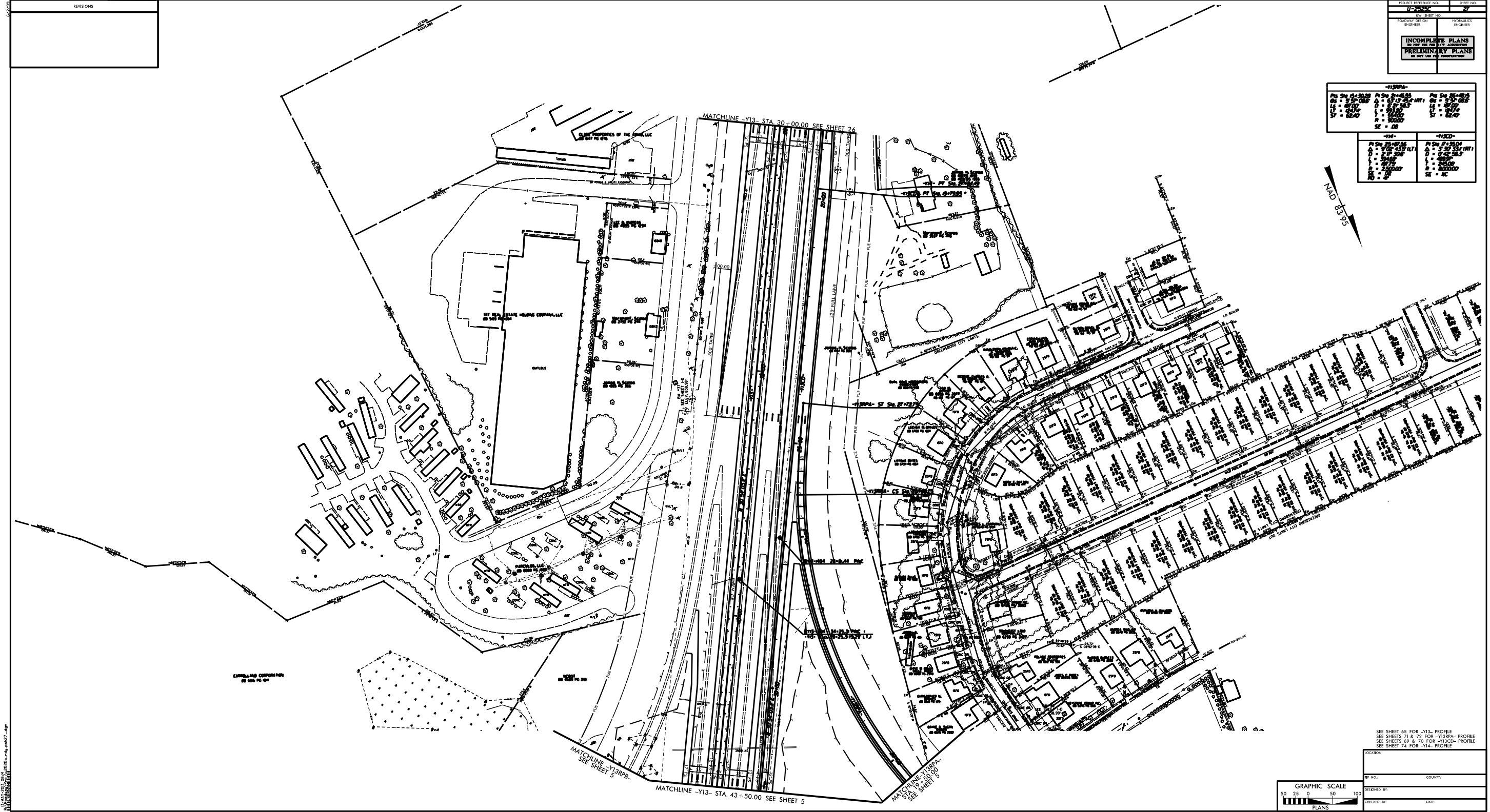
13-MAY-2013 08:14
 P:\PROJECTS\2525C\2525C-rdw_psh26.dgn
 2525C-RDW_PSH26.dwg

PROJECT NUMBER: U-2454
 SHEET NO: 27
 REV. SHEET NO:
 ROADWAY DESIGN ENGINEER:
 HYDRAULIC ENGINEER:
INCOMPLETE PLANS
 DO NOT USE FOR CONSTRUCTION
PRELIMINARY PLANS
 DO NOT USE FOR CONSTRUCTION

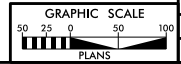
-Y13PA-		
PI STA: 4+50.00	PI STA: 21+45.00	PI STA: 24+00.00
CV: 5.00%	A: 0.15%	CV: 5.00%
LT: 80.00'	L: 0.00'	LT: 80.00'
ST: 62.40'	H: 0.0000'	ST: 62.40'
SE: 0.00'		
-Y13D-		
PI STA: 21+45.00	PI STA: 24+00.00	PI STA: 24+00.00
A: 0.15%	A: 0.15%	A: 0.15%
L: 0.00'	L: 0.00'	L: 0.00'
H: 0.0000'	H: 0.0000'	H: 0.0000'
SE: 0.00'	SE: 0.00'	SE: 0.00'



REVISIONS



13 MAY 2013 09:41 AM



SEE SHEET 45 FOR -Y13- PROFILE
 SEE SHEETS 71 & 72 FOR -Y13PA- PROFILE
 SEE SHEETS 69 & 70 FOR -Y13CD- PROFILE
 SEE SHEET 74 FOR -Y14- PROFILE

LOCATION: _____

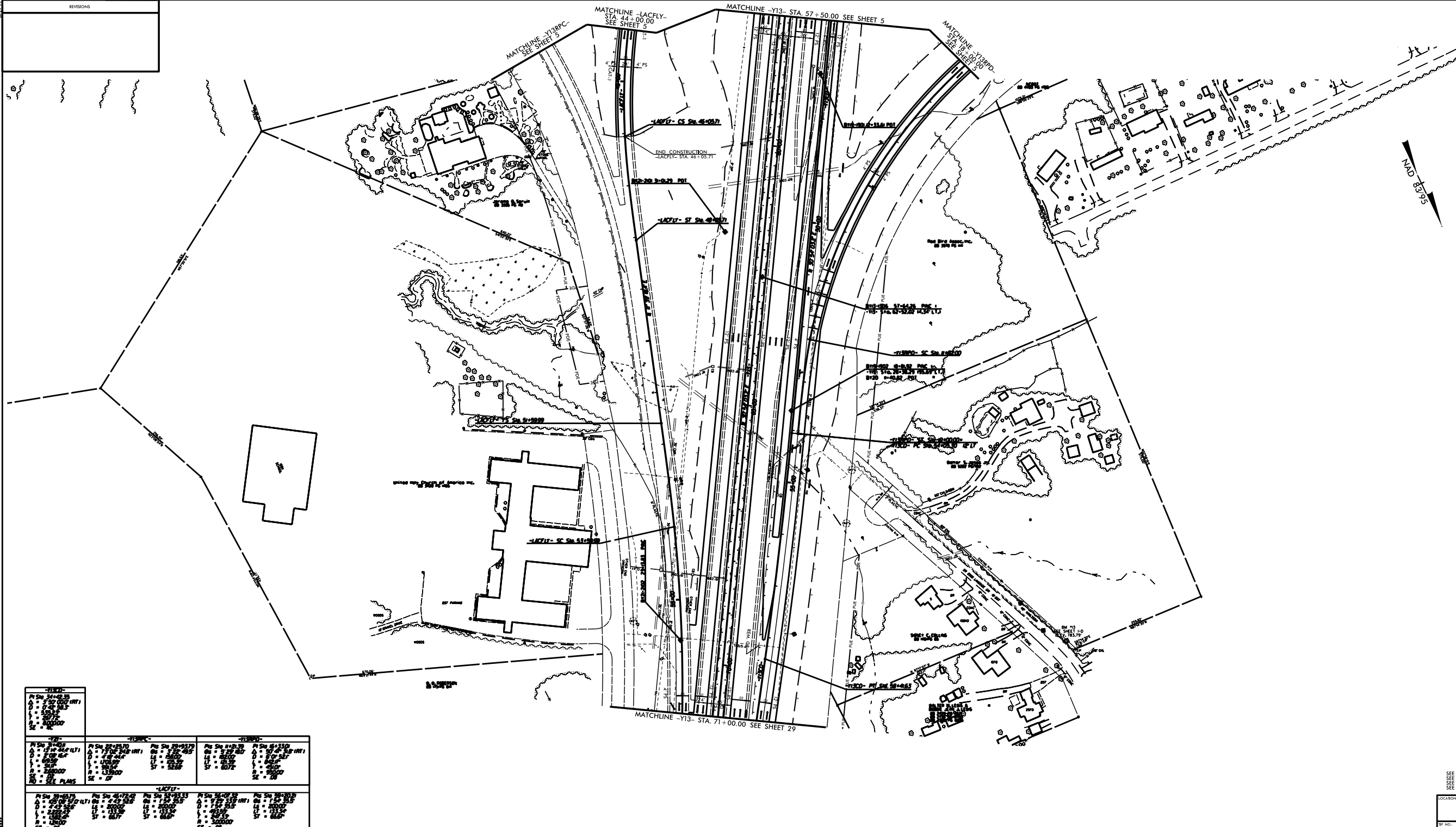
TRF NO.: _____ COUNTY: _____

DESIGNED BY: _____

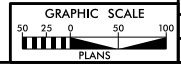
CHECKED BY: _____ DATE: _____

PROJECT REFERENCE NO.	SHEET NO.
17-2452	28
REV. SHEET NO.	
DESIGNED BY	ENGINEER
INCOMPLETE PLANS	
PRELIMINARY PLANS	
DO NOT SCALE OR CONSTRUCT	

NO.	DESCRIPTION



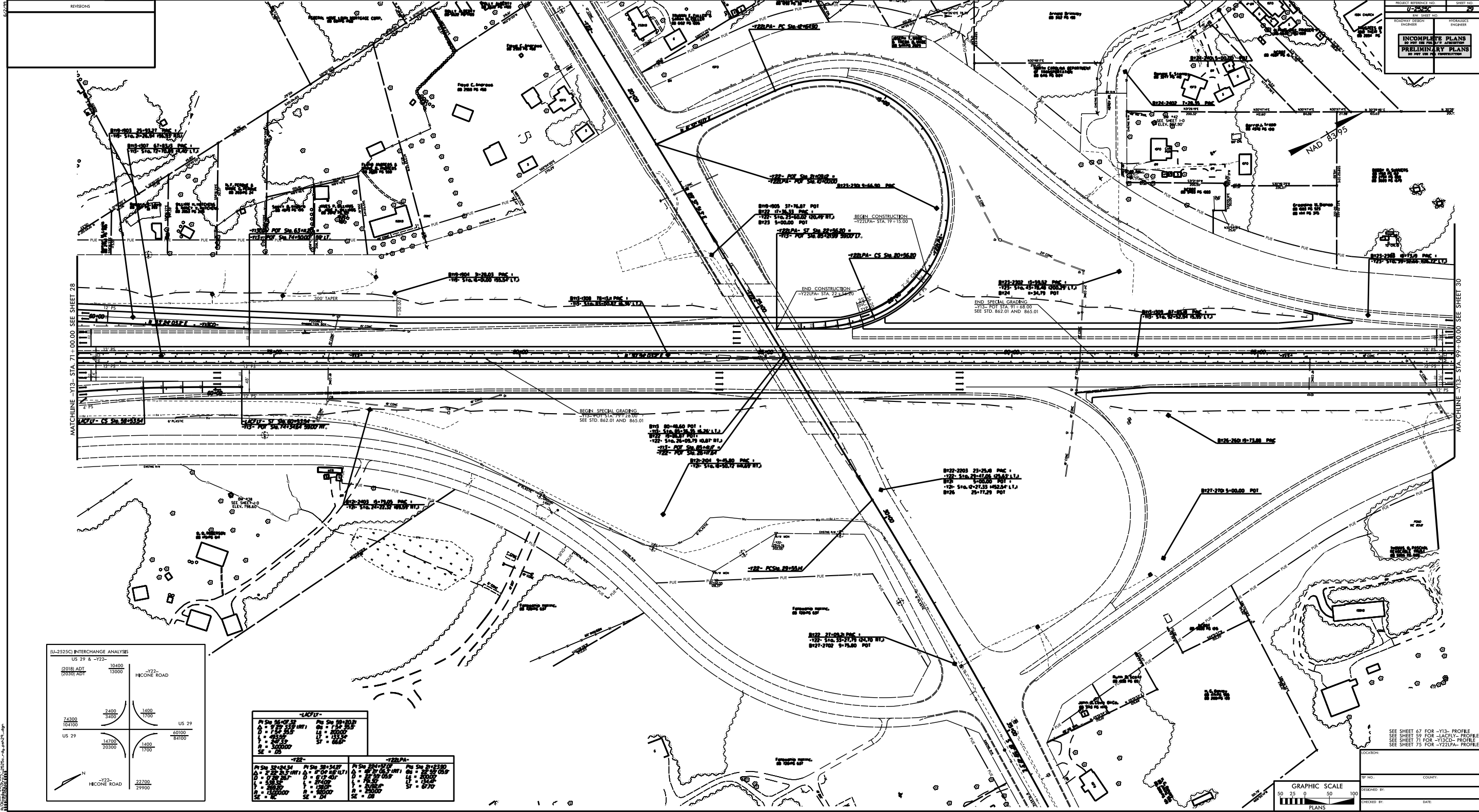
-Y13BPC-			
PI Sta 44+00.00	PI Sta 44+00.00	PI Sta 44+00.00	PI Sta 44+00.00
Δ = 1.50' (0.4571)	Δ = 1.50' (0.4571)	Δ = 1.50' (0.4571)	Δ = 1.50' (0.4571)
L = 100.00'	L = 100.00'	L = 100.00'	L = 100.00'
E = 100.00'	E = 100.00'	E = 100.00'	E = 100.00'
SE = 0.00'	SE = 0.00'	SE = 0.00'	SE = 0.00'
SEE PLANS	SEE PLANS	SEE PLANS	SEE PLANS
-Y13-			
PI Sta 44+00.00	PI Sta 44+00.00	PI Sta 44+00.00	PI Sta 44+00.00
Δ = 1.50' (0.4571)	Δ = 1.50' (0.4571)	Δ = 1.50' (0.4571)	Δ = 1.50' (0.4571)
L = 100.00'	L = 100.00'	L = 100.00'	L = 100.00'
E = 100.00'	E = 100.00'	E = 100.00'	E = 100.00'
SE = 0.00'	SE = 0.00'	SE = 0.00'	SE = 0.00'
SEE PLANS	SEE PLANS	SEE PLANS	SEE PLANS
-Y13BPD-			
PI Sta 44+00.00	PI Sta 44+00.00	PI Sta 44+00.00	PI Sta 44+00.00
Δ = 1.50' (0.4571)	Δ = 1.50' (0.4571)	Δ = 1.50' (0.4571)	Δ = 1.50' (0.4571)
L = 100.00'	L = 100.00'	L = 100.00'	L = 100.00'
E = 100.00'	E = 100.00'	E = 100.00'	E = 100.00'
SE = 0.00'	SE = 0.00'	SE = 0.00'	SE = 0.00'
SEE PLANS	SEE PLANS	SEE PLANS	SEE PLANS



SEE SHEET 66 FOR -Y13- PROFILE
 SEE SHEET 77 FOR -Y13BPC- PROFILE
 SEE SHEETS 58 & 59 FOR -LACFLY- PROFILE
 SEE SHEET 70 & 71 FOR -Y13CD- PROFILE

LOCATION:	
REV. NO.:	COUNTY:
DESIGNED BY:	CHECKED BY:
DATE:	

PROJECT NUMBER: U-252C
 SHEET NO: 29
 INCOMPLETE PLANS
 DO NOT USE FOR CONSTRUCTION

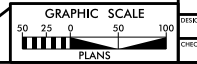


(U-252C) INTERCHANGE ANALYSIS
 US 29 & -Y22-

(2018) ADT 74300	(2030) ADT 104100	-Y22- HICONE ROAD 10400 13000
US 29 14700 20300	US 29 60100 84100	US 29 1400 1700
		-Y22- HICONE ROAD 22700 29900

-Y22-
HICONE ROAD

Pi Sta 26+00.00 Δ = 9.22 L = 48.25 R = 320.00 SE = 05	Pi Sta 30+54.07 Δ = 9.04 L = 24.00 R = 300.00 SE = 04	Pi Sta 34+10.17 Δ = 10.15 L = 12.00 R = 300.00 SE = 04	Pi Sta 38+23.00 Δ = 10.25 L = 12.00 R = 300.00 SE = 04
---	---	--	--



SEE SHEET 67 FOR -Y13- PROFILE
 SEE SHEET 59 FOR -JACKY- PROFILE
 SEE SHEET 71 FOR -Y10C- PROFILE
 SEE SHEET 75 FOR -Y22LPA- PROFILE

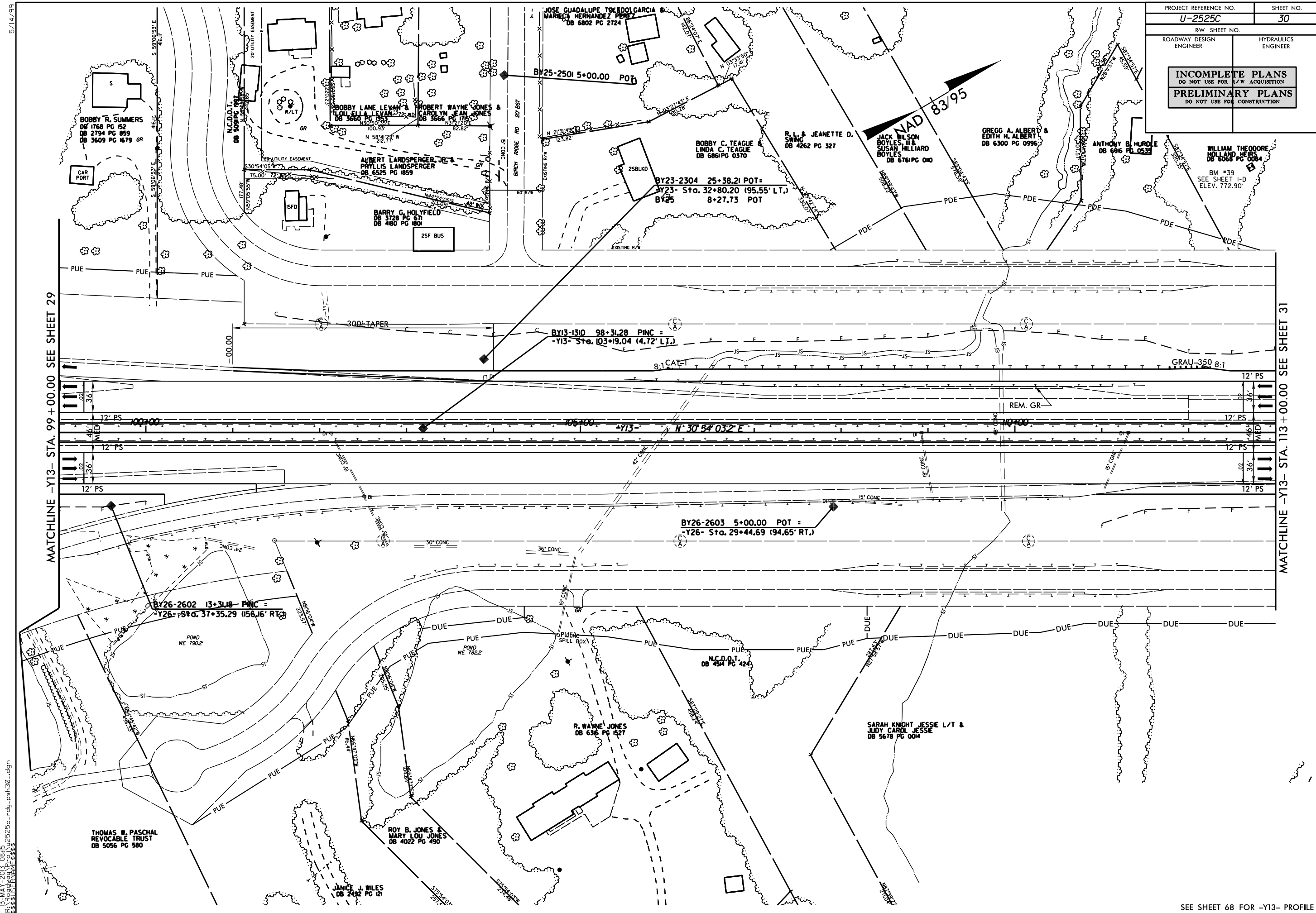
LOCATION:
 TWP NO.: COUNTY:
 DESIGNED BY:
 CHECKED BY: DATE:

MATCHLINE -Y13- STA. 71+00.00 SEE SHEET 28

MATCHLINE -Y13- STA. 67+00.00 SEE SHEET 30

5/14/99

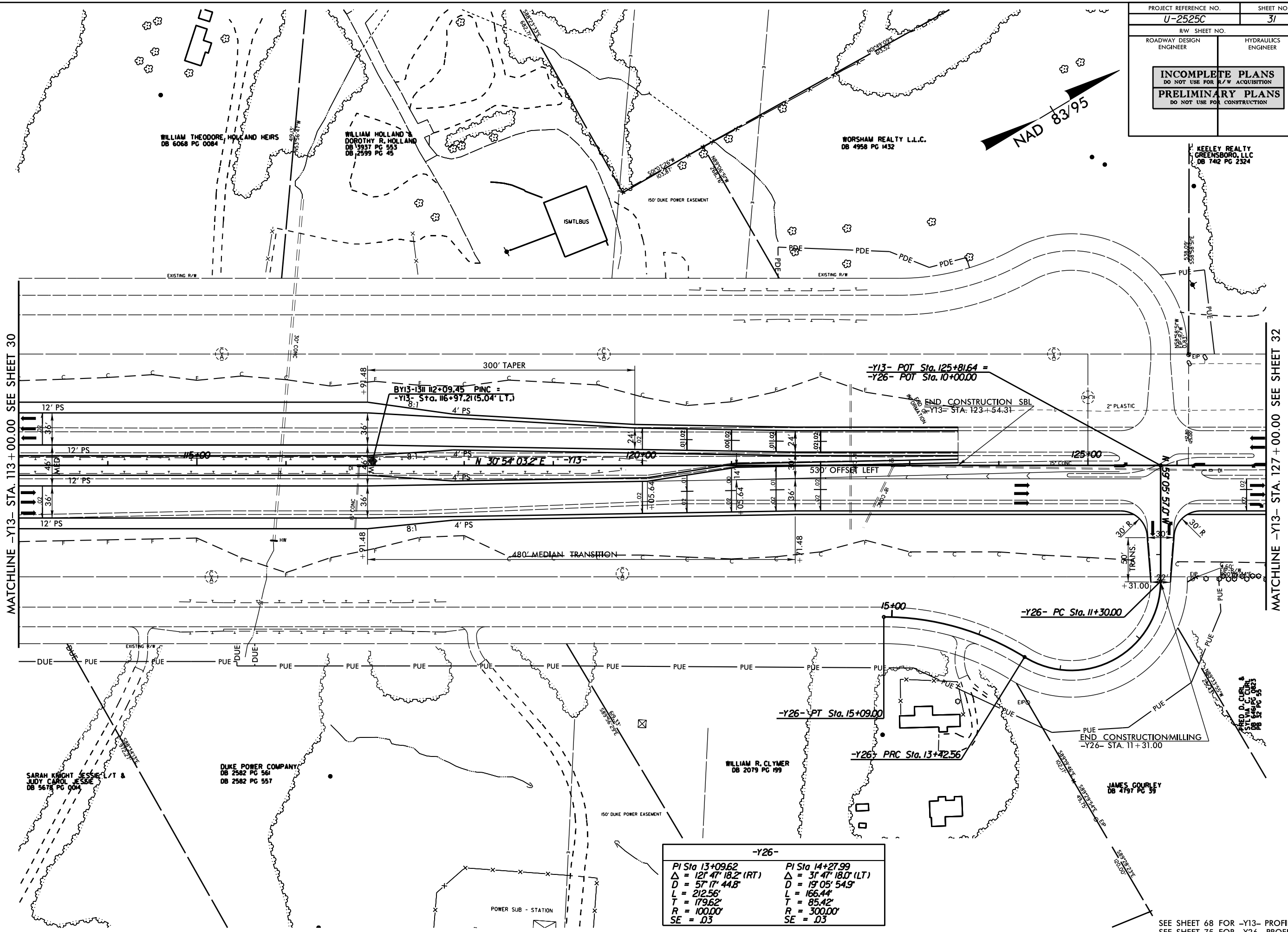
PROJECT REFERENCE NO.	SHEET NO.
U-2525C	30
RW SHEET NO.	
ROADWAY DESIGN ENGINEER	HYDRAULICS ENGINEER
INCOMPLETE PLANS	
DO NOT USE FOR A/W ACQUISITION	
PRELIMINARY PLANS	
DO NOT USE FOR CONSTRUCTION	



SEE SHEET 68 FOR -Y13- PROFILE

5/14/99
 13-MAY-2013 08:15
 R:\PROJECTS\13-05\13-052525c-rd+psh31.dgn
 13-052525c-rd+psh31.dgn

PROJECT REFERENCE NO. U-2525C	SHEET NO. 31
R/W SHEET NO.	
ROADWAY DESIGN ENGINEER	HYDRAULICS ENGINEER
INCOMPLETE PLANS DO NOT USE FOR R/W ACQUISITION	
PRELIMINARY PLANS DO NOT USE FOR CONSTRUCTION	

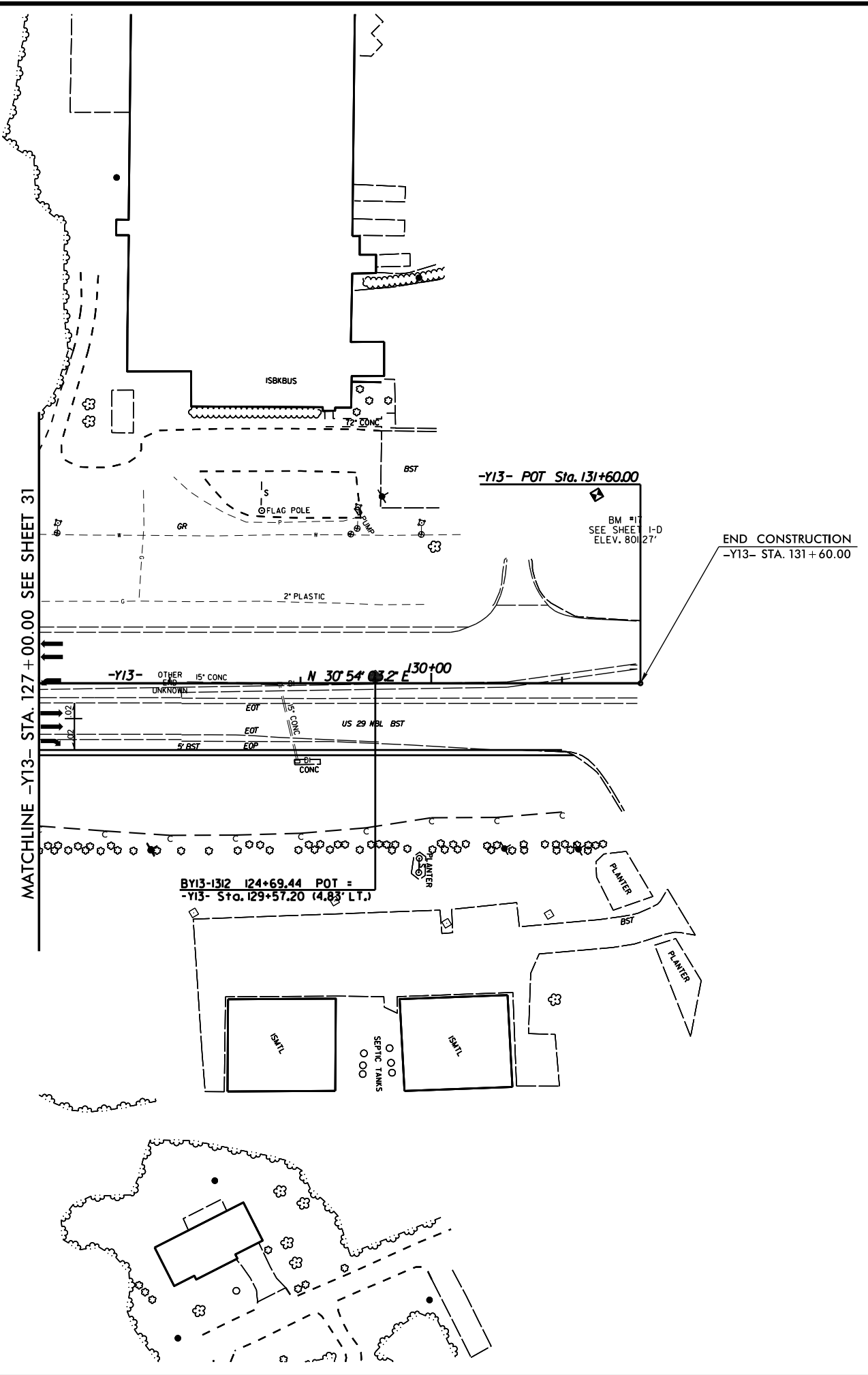
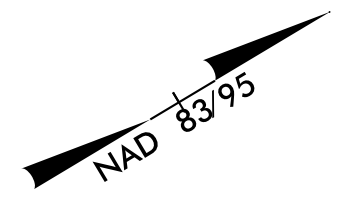


-Y26-	
PI Sta 13+09.62	PI Sta 14+27.99
$\Delta = 121' 47" 18.2" (RT)$	$\Delta = 31' 47" 18.0" (LT)$
$D = 57' 17" 44.8"$	$D = 19' 05" 54.9"$
$L = 212.56'$	$L = 166.44'$
$T = 179.62'$	$T = 85.42'$
$R = 100.00'$	$R = 300.00'$
$SE = .03$	$SE = .03$

SEE SHEET 68 FOR -Y13- PROFILE
 SEE SHEET 75 FOR -Y26- PROFILE

5/14/99

PROJECT REFERENCE NO. <i>U-2525C</i>	SHEET NO. 32
RW SHEET NO.	
ROADWAY DESIGN ENGINEER	HYDRAULICS ENGINEER
INCOMPLETE PLANS DO NOT USE FOR R/W ACQUISITION PRELIMINARY PLANS DO NOT USE FOR CONSTRUCTION	



END CONSTRUCTION
-Y13- STA. 131 + 60.00

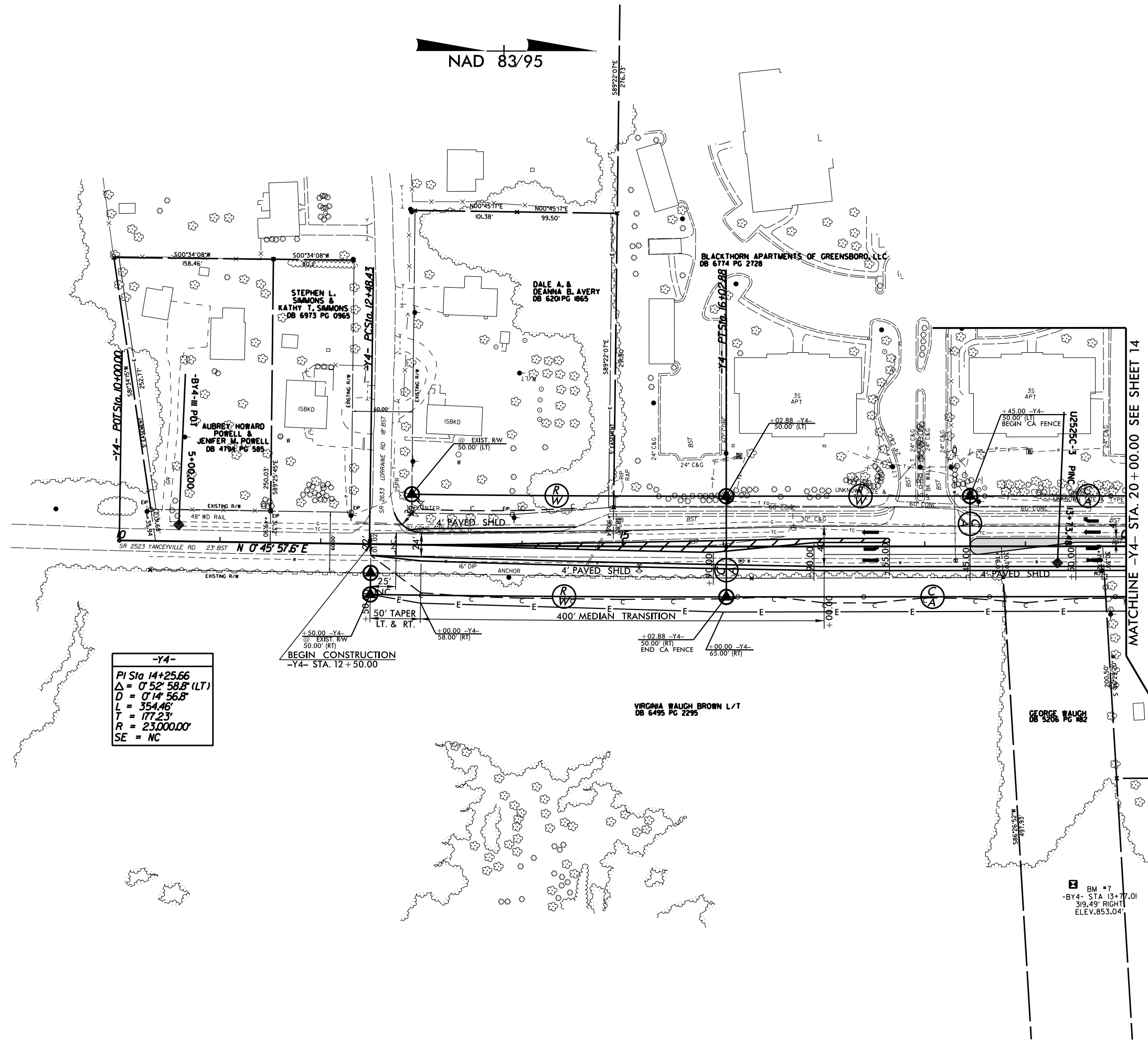
13-MAY-2013 08:15
P:\PROJECTS\U-2525C\U-2525C-rdy_psh32.dgn

SEE SHEET 69 FOR -Y13- PROFILE

5/14/99

PROJECT REFERENCE NO. U-2525C	SHEET NO. 33
ROADWAY DESIGN ENGINEER	HYDRAULICS ENGINEER
INCOMPLETE PLANS DO NOT USE FOR R/W ACQUISITION PRELIMINARY PLANS DO NOT USE FOR CONSTRUCTION	

NAD 83/95



-Y4-
 PI Sta 14+25.66
 $\Delta = 0^{\circ}52'58.8\" (LT)$
 $D = 0^{\circ}14'56.8\"$
 $L = 354.46'$
 $T = 177.23'$
 $R = 23,000.00'$
 SE = NC

MATCHLINE -Y4- STA. 20+00.00 SEE SHEET 14

BM #7
 -BY4- STA 13+77.01
 319.49' RIGHT
 ELEV. 853.04'

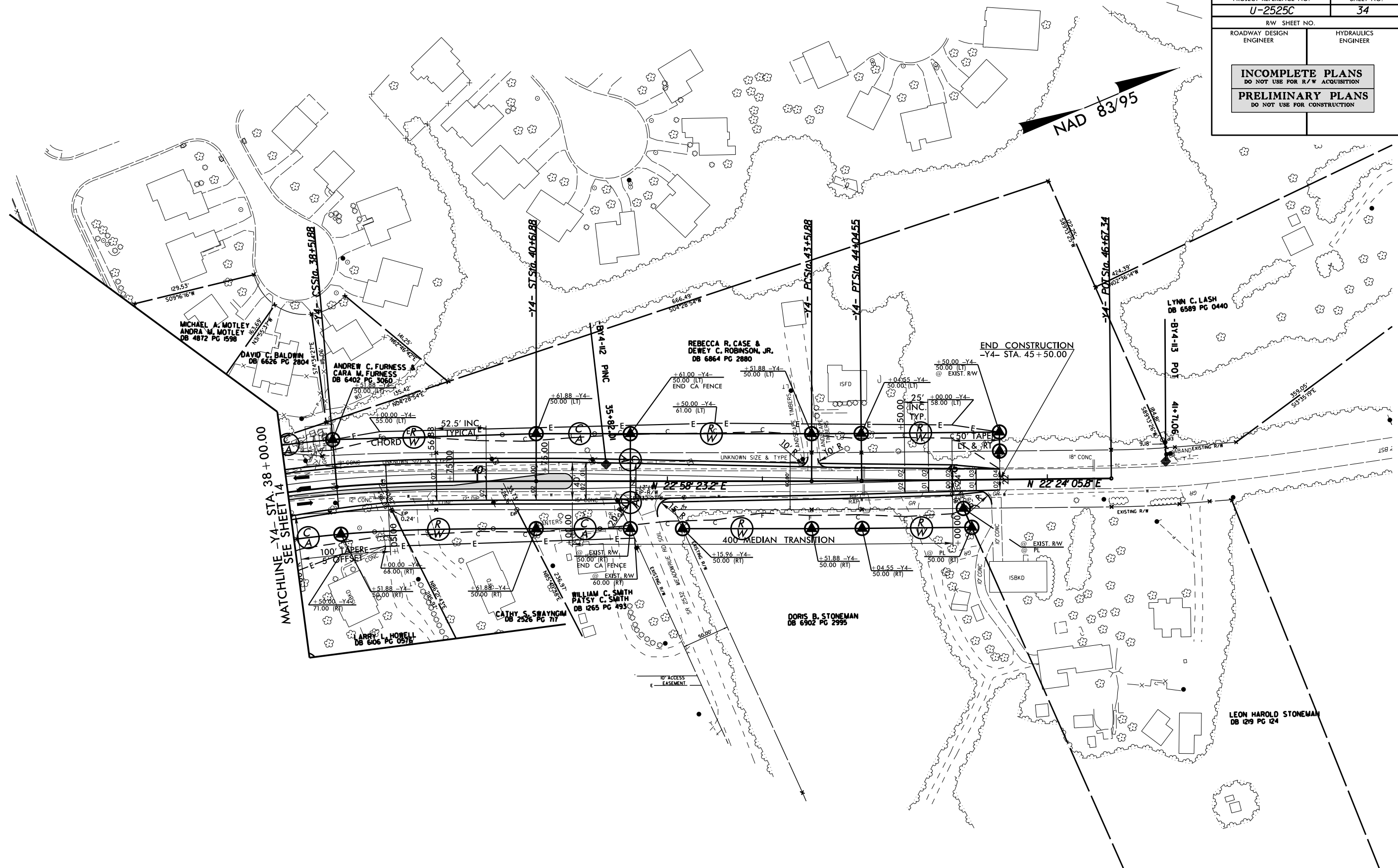
WILLOW OAKS PARTNERS
 DB 589/PC 2136

SEE SHEET 78 FOR -Y4- PROFILE

13-MAY-2013, 08:15
 P:\PROJECTS\2525C\U2525C-r.dwg_psh33.dgn

5/14/99

PROJECT REFERENCE NO.	SHEET NO.
U-2525C	34
R/W SHEET NO.	
ROADWAY DESIGN ENGINEER	HYDRAULICS ENGINEER
INCOMPLETE PLANS DO NOT USE FOR R/W ACQUISITION PRELIMINARY PLANS DO NOT USE FOR CONSTRUCTION	



-Y4-		
PI Sta 37+1467	PI Sta 39+2193	PI Sta 43+7821
$\Delta = 13^{\circ} 06' 17.8''$ (RT)	$\Theta_s = 4^{\circ} 59' 33.5''$	$\Delta = 0^{\circ} 34' 17.4''$ (LT)
D = 4' 45' 17.4"	Ls = 210.00'	D = 1' 05' 06.5"
L = 275.61'	LT = 140.06'	L = 52.67'
T = 138.41'	ST = 70.05'	T = 26.33'
R = 1205.00'		R = 5280.00'
SE = .04		SE = .04

SEE SHEET 79 FOR -Y4- PROFILE

13-MAY-2013 08:15
P:\PROJECTS\U-2525C-rdw_psh34.dgn
R:\BUSINESS\ENGINEER\533

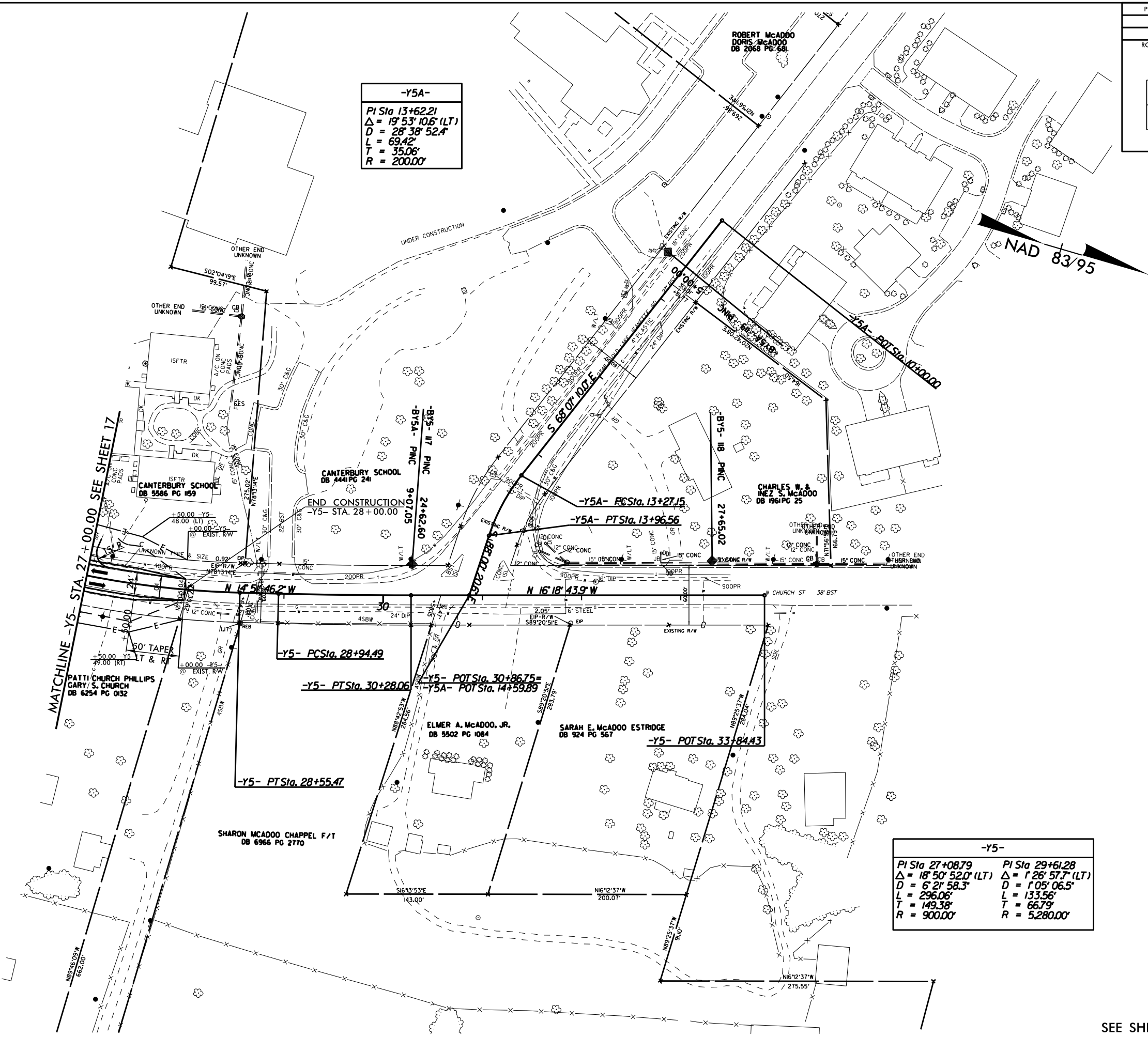
-Y5A-

PI Sta 13+62.21
 $\Delta = 19^\circ 53' 10.6" (LT)$
 $D = 28^\circ 38' 52.4"$
 $L = 69.42'$
 $T = 35.06'$
 $R = 200.00'$

-Y5-

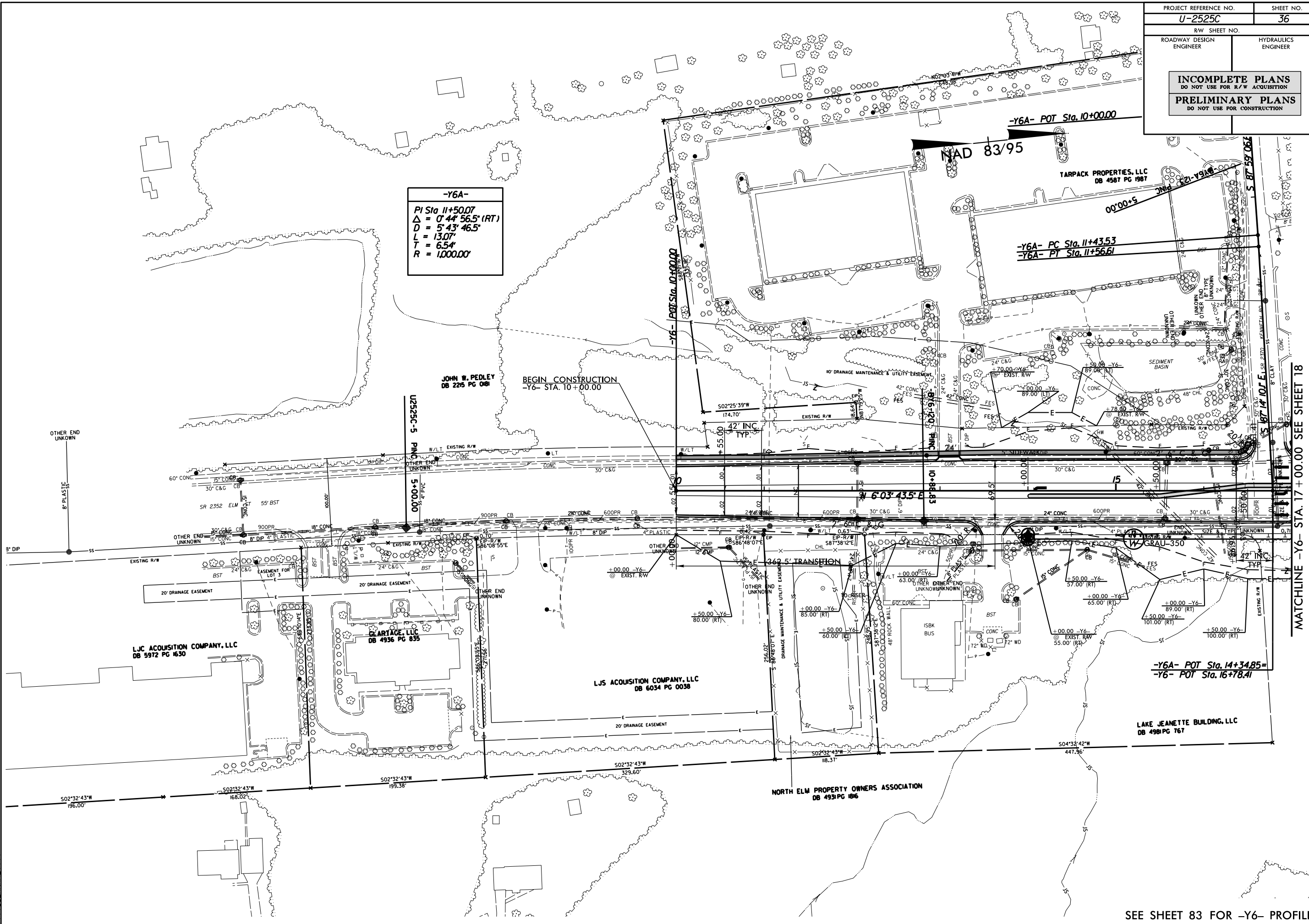
PI Sta 27+08.79	PI Sta 29+61.28
$\Delta = 18^\circ 50' 52.0" (LT)$	$\Delta = 1^\circ 26' 57.7" (LT)$
$D = 6^\circ 21' 58.3"$	$D = 1^\circ 05' 06.5"$
$L = 296.06'$	$L = 133.56'$
$T = 149.38'$	$T = 66.79'$
$R = 900.00'$	$R = 5,280.00'$

5/14/99
 13-MAY-2013 08:15
 P:\PROJECTS\2525C\U2525C-rdw_psh35.dgn
 35



SEE SHEET 83 FOR -Y5- PROFILE

-Y6A-
PI Sta 11+50.07
 $\Delta = 0^\circ 44' 56.5'' (RT)$
 $D = 5^\circ 43' 46.5''$
 $L = 13.07'$
 $T = 6.54'$
 $R = 1,000.00'$

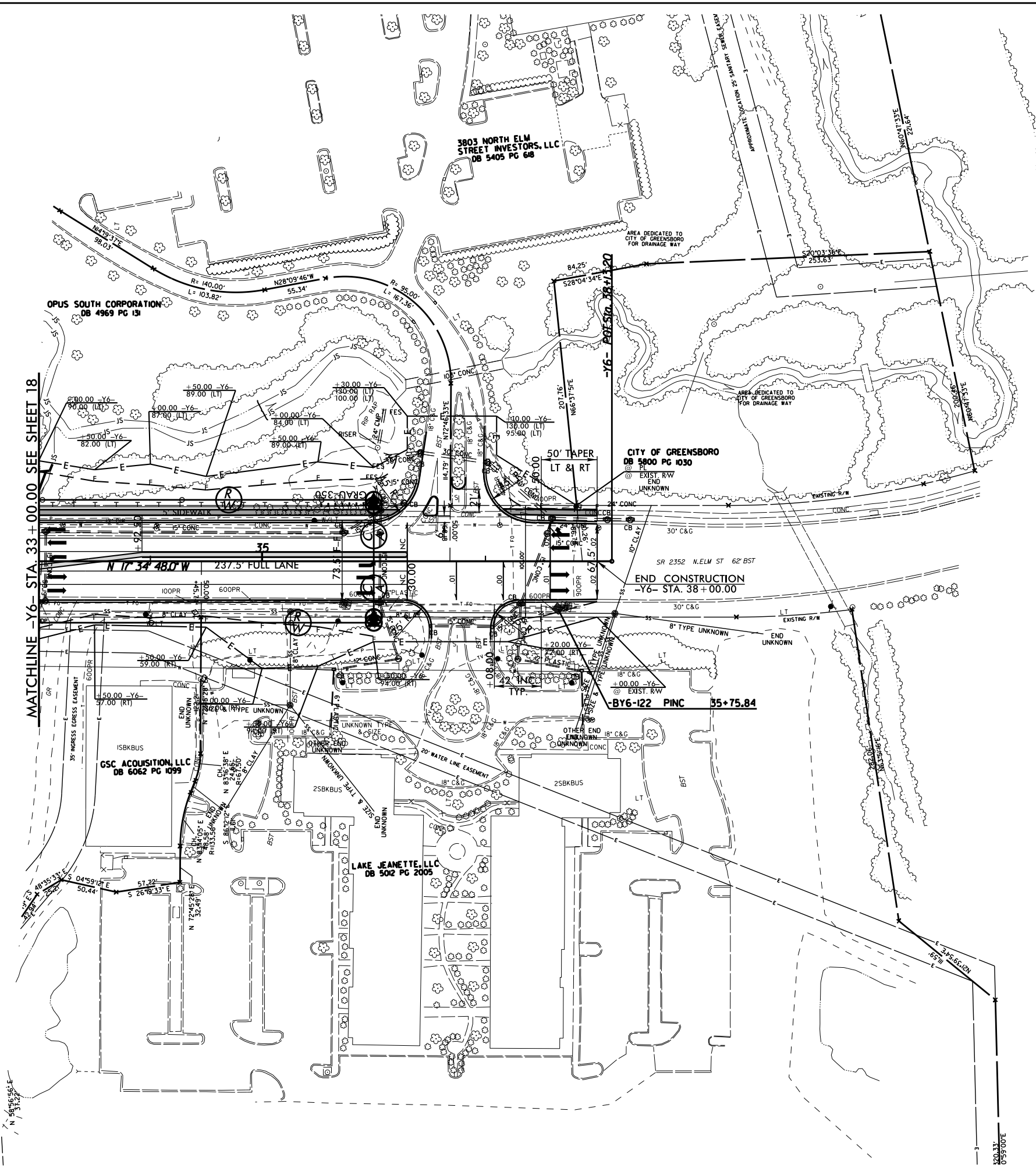
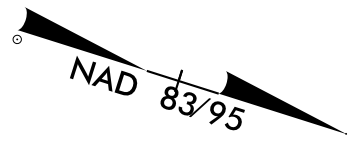


5/14/1999
13-MAY-2013, 08:15
P:\PROJECTS\2013\U-2525C-rdw_psh36.dgn

MATCHLINE -Y6- STA. 17+00.00 SEE SHEET 18

SEE SHEET 83 FOR -Y6- PROFILE

PROJECT REFERENCE NO.	SHEET NO.
U-2525C	37
RW SHEET NO.	
ROADWAY DESIGN ENGINEER	HYDRAULICS ENGINEER
INCOMPLETE PLANS DO NOT USE FOR R/W ACQUISITION PRELIMINARY PLANS DO NOT USE FOR CONSTRUCTION	



MATCHLINE -Y6- STA. 33 + 00.00 SEE SHEET 18

13-MAY-2013 08:15
 P:\PROJECTS\U-2525C-rdw_psh37.dgn
 37

SEE SHEET 84 FOR -Y6- PROFILE