

NORTH CAROLINA  
DEPARTMENT  
OF  
TRANSPORTATION



#### Legend

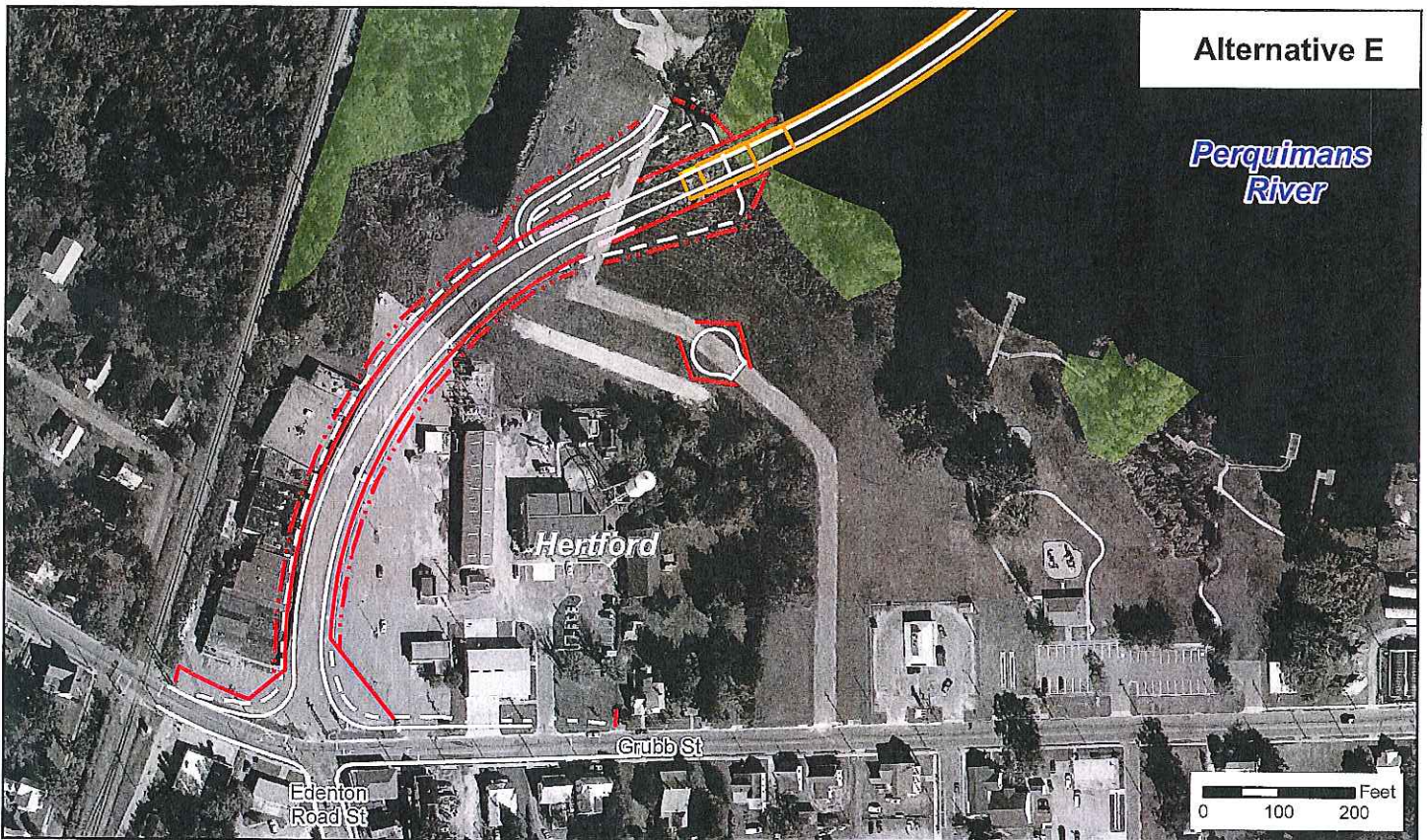
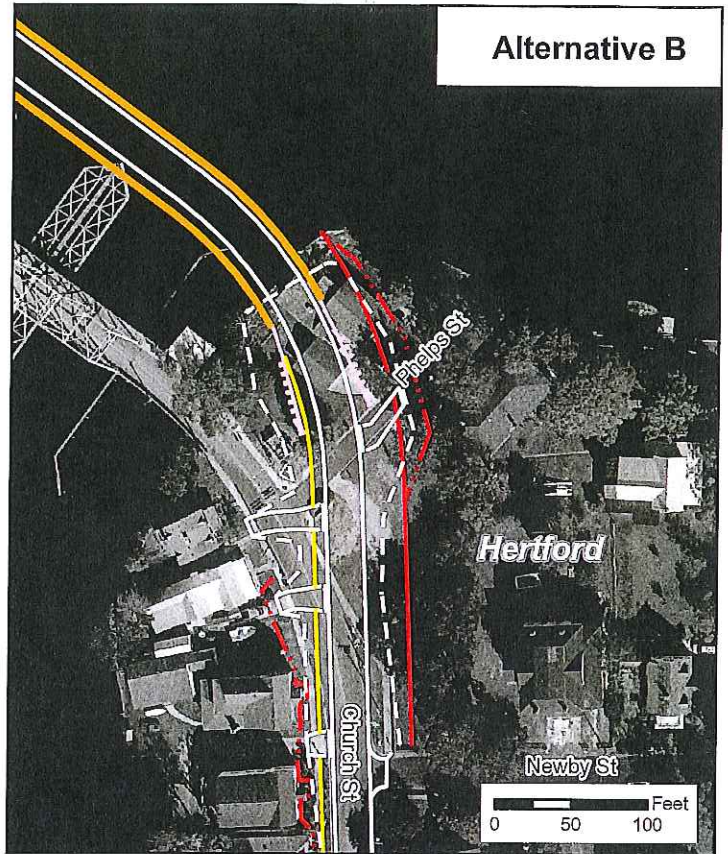
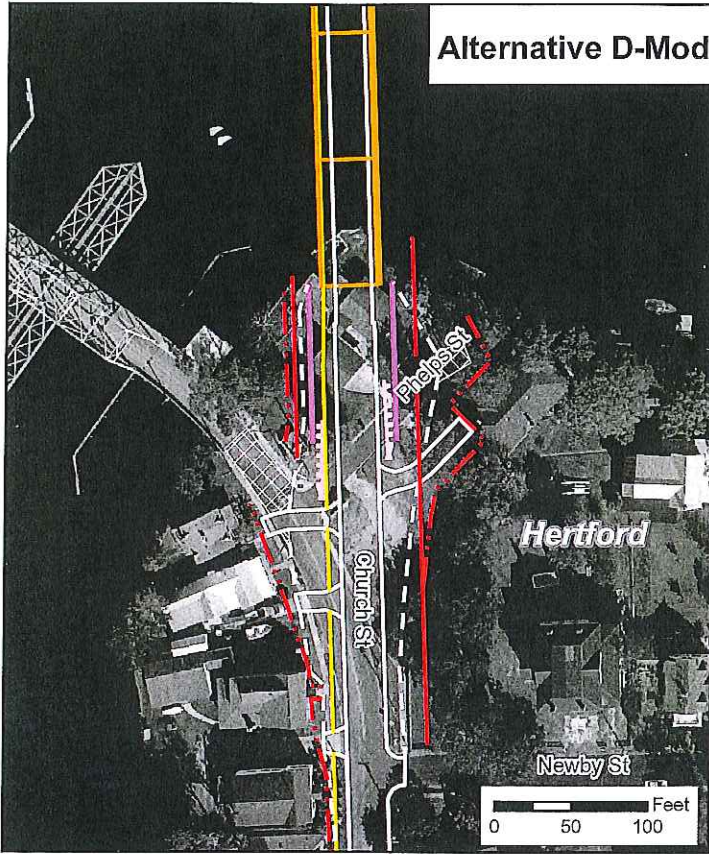
- - - Alternative B
- - - Alternative D Mod
- - - Alternative E

Figure 2A

#### Detailed Study Alternative Designs

R-4467 - US 17 Business/NC 37  
from Church Street to NC 37  
Hertford and Winfall, Perquimans County





NORTH CAROLINA  
DEPARTMENT  
OF  
TRANSPORTATION



- New Edge of Pavement
- Construction Limits
- Bridge
- Guardrail
- Retaining Wall
- Sidewalk

- Easement
- ROW
- Remove Pavement
- Jurisdictional Wetlands

**Figure 2B**  
Southern Terminus  
Detailed Study Alternative Designs  
R-4467 - US 17 Business/NC 37  
from Church Street to NC 37  
Hertford and Winfall, Perquimans County



All Alternatives

Winfall

BUS  
17

Creek Dr

Bear Garden Rd

Winfall Blvd

0 200 400 Feet



NORTH CAROLINA  
DEPARTMENT  
OF  
TRANSPORTATION

- Sidewalk
- Bridge
- Construction Limits
- New Edge of Pavement
- Guardrail
- Retaining Wall

- Easement
- Right-of-Way
- Remove Pavement
- Jurisdictional Coastal Wetlands
- Jurisdictional Wetlands

Figure 2C  
Northern Terminus  
Detailed Study Alternative Designs  
R-4467 - US 17 Business/NC 37  
from Church Street to NC 37  
Hertford and Winfall, Perquimans County



**Table 1 –Impacts of Current Study Alternatives**

Topic		Alternative		
		B 15-Foot Swing Span	D-Mod 33-Foot Fixed	E 33-Foot Fixed
Relocations	Residential	1	1	0
	Business	0	0	1
	Total	1	1	1
Minority/Low-Income Populations – Disproportionate Impacts*		None	None	Yes
Historic Properties (Adverse Effect)		1 (S-bridge)	1 (S-bridge)	1 (S-bridge)
Community Facilities Impacted		0	0	0
Section 4(f) Impacts		S-bridge and Hertford Historic District	S-bridge and Hertford Historic District	S-bridge
Traffic Noise (# of receptors impacted)		24	24	16
Prime Farmland (Acres)		N/A**	N/A**	N/A**
Forested Acres		0.1 acre	< 0.1 acre	< 0.1 acre
Wetlands (Acres)		0.07 acre	0.07 acre	0.07 acre
Streams (Feet)		0	0	0
Floodplains (Acres)		0	0	0
Submerged Aquatic Veg. (SAV) habitat		0.12 acre	0.12 acre	Alt E 15' – 0.77 acre Alt E 33' – 0.58 acre
SAV (presence)		None	None	None
Federally-Protected Species		No Effect	No Effect	No Effect
Length (Miles)		0.82 miles	0.62 miles	1.01 miles
Cost Estimate (in millions)				
Construction Cost		\$31.0	\$18.0	\$26.1
Right of Way Cost		\$0.9	\$0.9	\$1.1
Utility Relocation Cost		\$0.0	\$0.4	\$0.0
Total Cost		\$31.9	\$19.3	\$27.2