

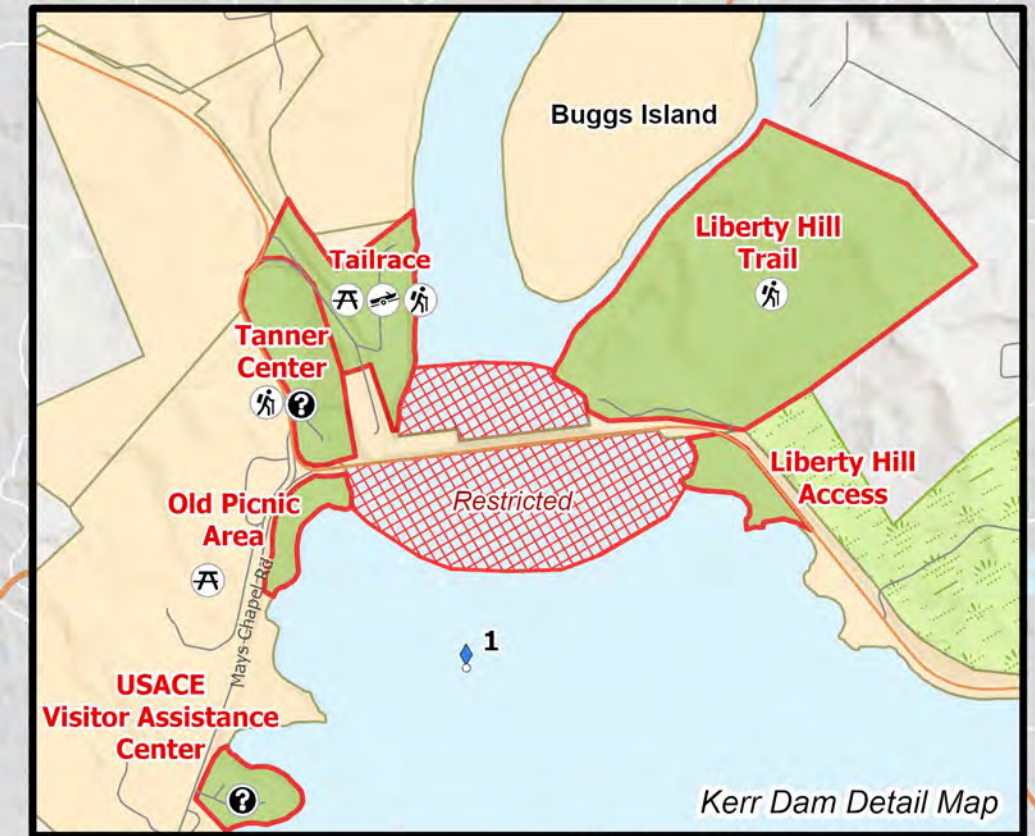
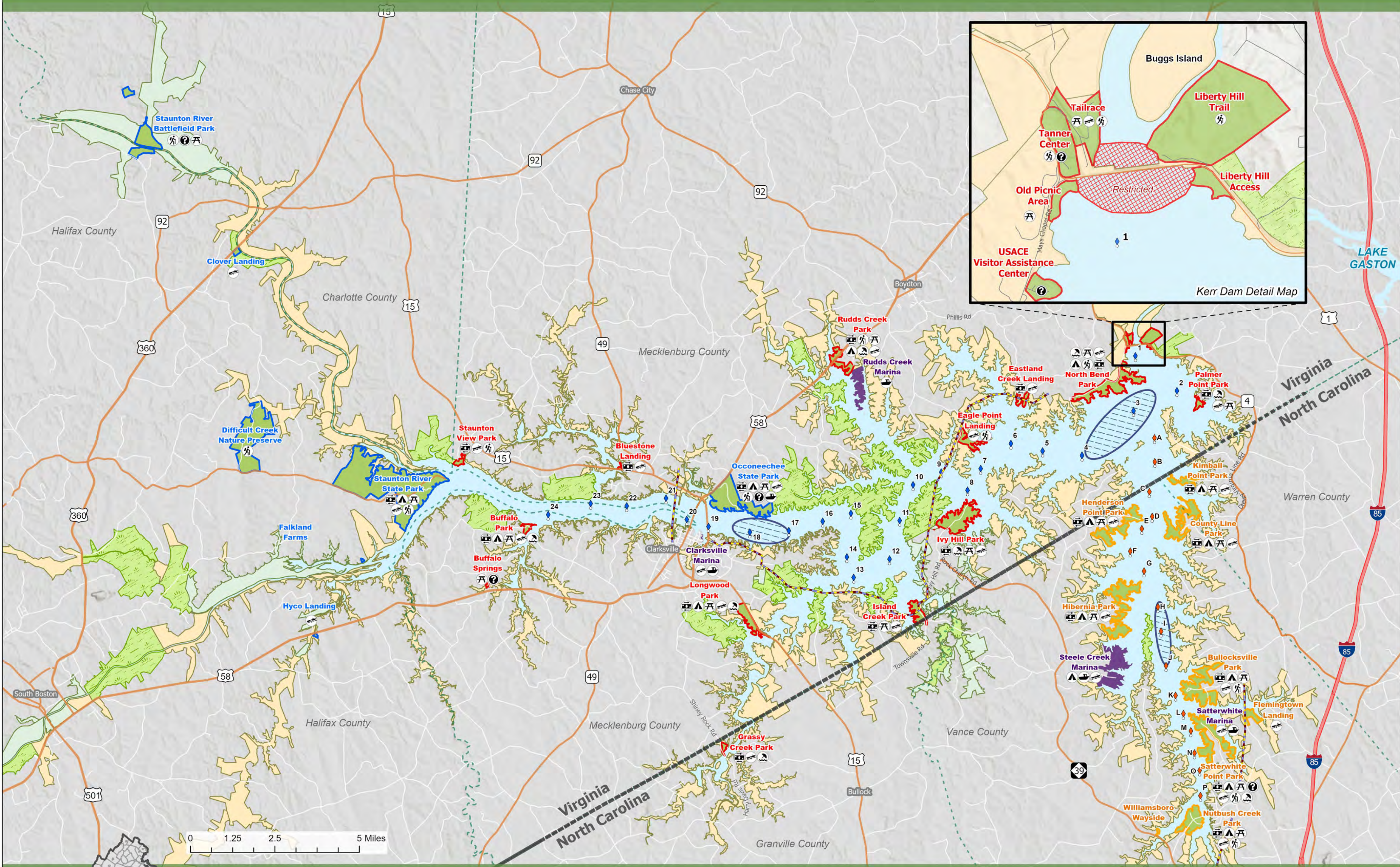


US Army Corps
of Engineers
Wilmington District

John H Kerr Dam & Reservoir

Visitor Assistance Center
1930 Mays Chapel Rd,
Boydton, VA 23917

Phone: (434) 738-6143
Open M-F 8:00am - 4:30pm



- | | | | | | |
|-------------------------------------|--------------------------------|---------------------------|------------------------|------------|------------------------|
| Public Recreation Area, State of VA | Project Lands, Flowage Easment | Seaplane Operations Areas | Highways / Interstates | Fee Area | Swim Beach |
| Public Recreation Area, State of NC | Project Lands; Project Lands, | State Boundaries | Power Line Crossings | Campground | Picnic Shelter |
| Public Recreation Area, USACE | Wildlife Management Area | County Boundaries | Lettered Buoys | Boat Ramp | Trails |
| Commercial Marinas | Restricted Area at Dam | State Routes | Numbered Buoys | Marina | Exhibits & Information |

