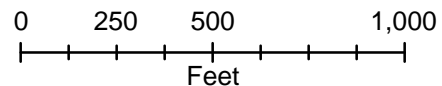


LEGEND

- Proposed Bridge or Culvert
- Proposed Edge of pavement
- Proposed Right of way
- Existing Right of way
- Parcel Boundary
- Delineated Wetland
- Delineated Stream
- Historic Property - Eligible for National Register of Historic Places
- Historic Structure - Eligible for National Register of Historic Places
- Municipal Boundary
- Cemetery



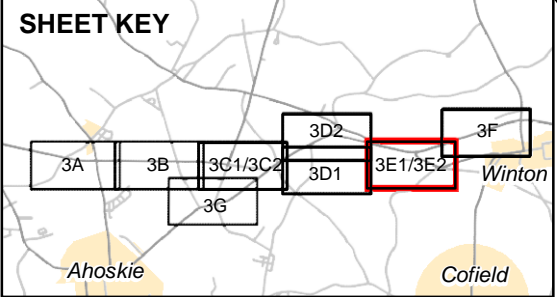
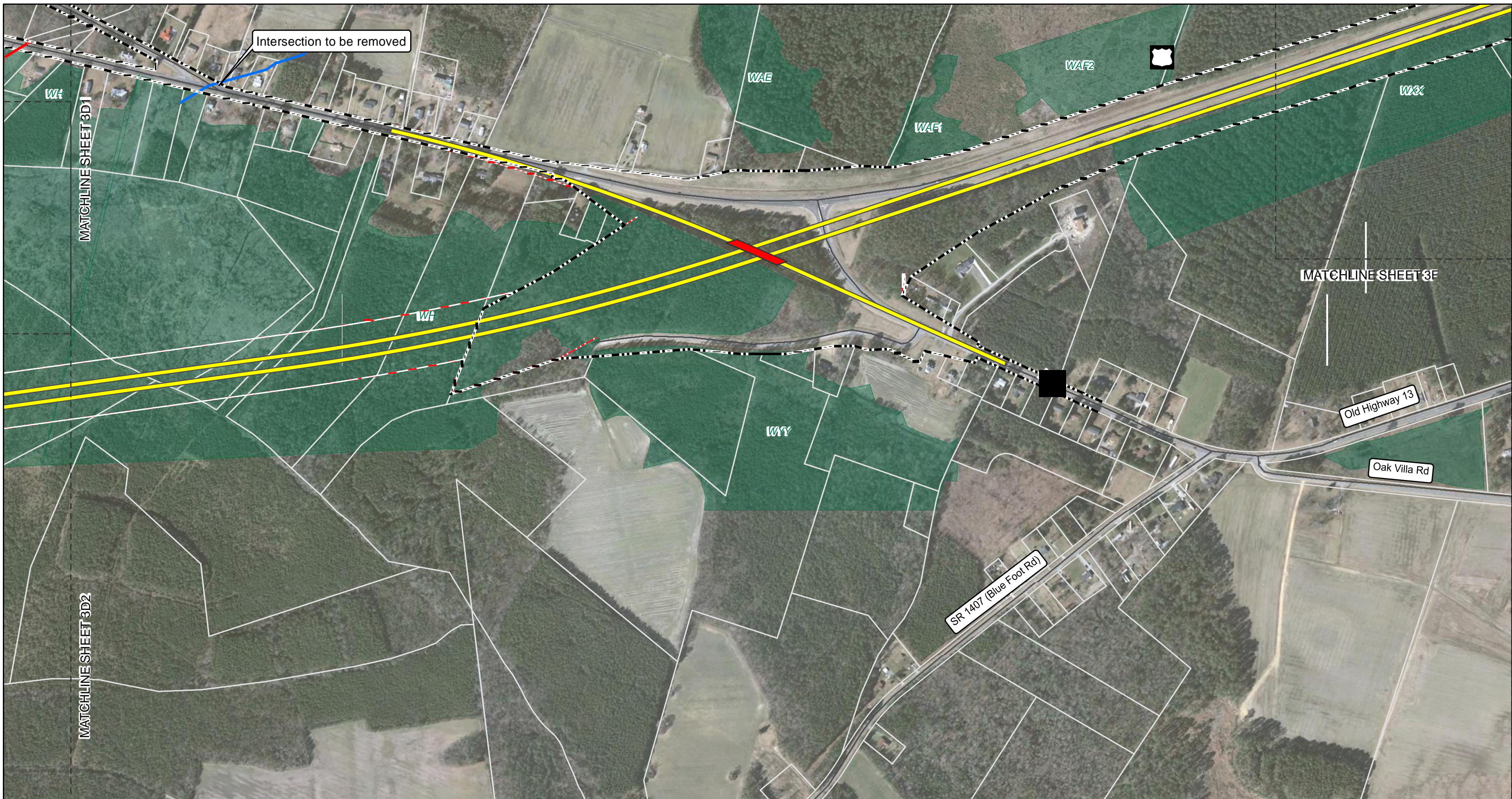
Alternative 3

TIP Project Number R-5311
 Improvements to US 13/NC 11
 from NC 11/NC 561 near Ahoskie
 to US 13/US 158/NC 45 near Winton



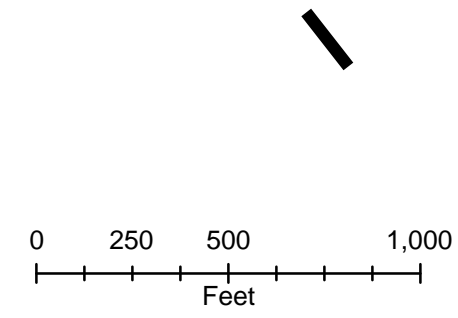
North Carolina Department of
 Transportation
 Project Development and
 Environmental Analysis Unit

Figure
3D2



LEGEND

- Proposed Bridge or Culvert
- Proposed Edge of Pavement
- Proposed Right of way
- Existing Right of way
- Parcel Boundary
- Delineated Wetland
- Delineated Stream
- Historic Property - Eligible for National Register of Historic Places
- Historic Structure - Eligible for National Register of Historic Places
- Municipal Boundary
- Cemetery



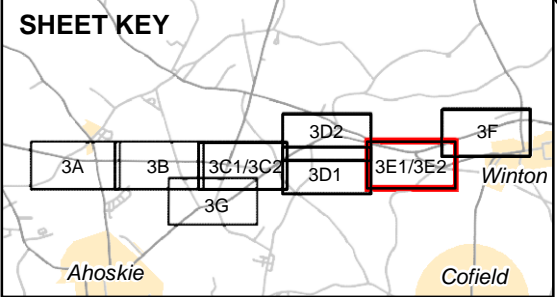
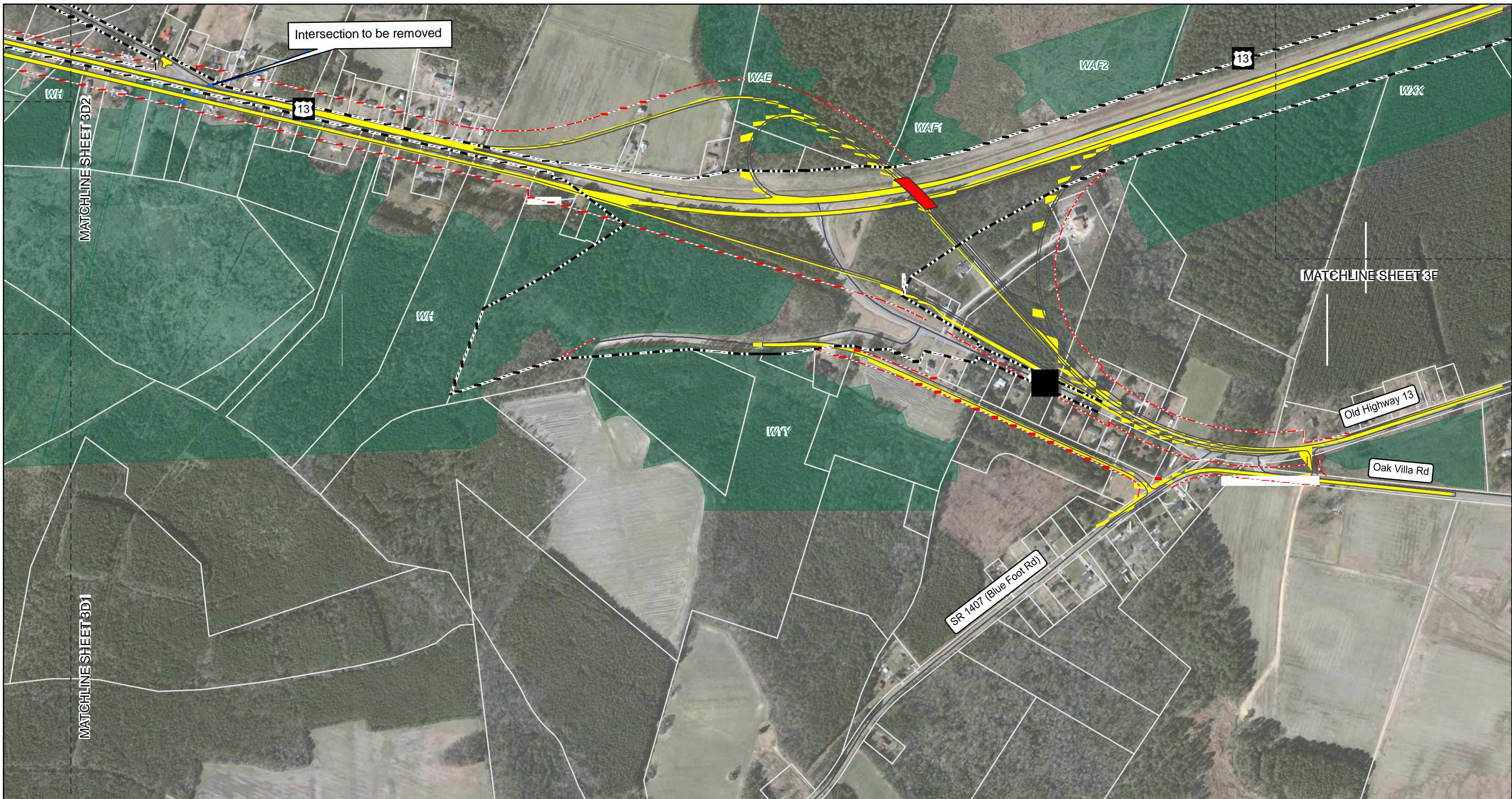
Alternative 1

TIP Project Number R-5311
 Improvements to US 13/NC 11
 from NC 11/NC 561 near Ahoskie
 to US 13/US 158/NC 45 near Winton



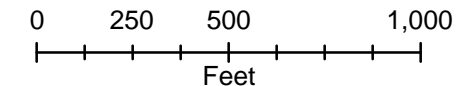
North Carolina Department of
 Transportation
 Project Development and
 Environmental Analysis Unit

Figure
3E1



LEGEND

- Proposed Bridge or Culvert
- Proposed Edge of pavement
- Proposed Right of way
- Existing Right of way
- Parcel Boundary
- Delineated Wetland
- Delineated Stream
- Historic Property - Eligible for National Register of Historic Places
- Historic Structure - Eligible for National Register of Historic Places
- Municipal Boundary
- Cemetery



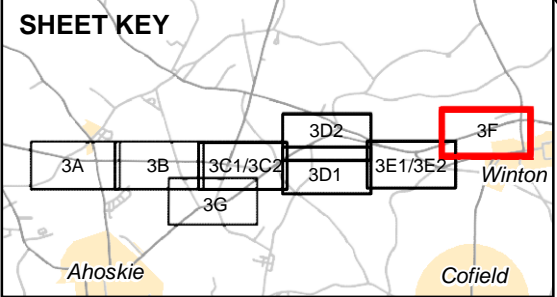
Alternative 3

TIP Project Number R-5311
 Improvements to US 13/NC 11
 from NC 11/NC 561 near Ahoskie
 to US 13/US 158/NC 45 near Winton



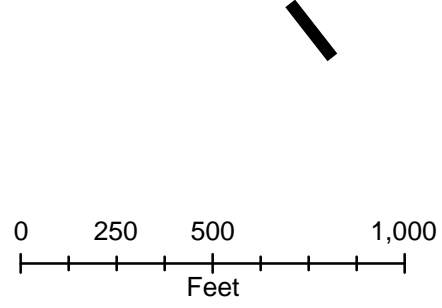
North Carolina Department of
 Transportation
 Project Development and
 Environmental Analysis Unit

Figure
3E2



LEGEND

- Proposed Bridge or Culvert
- Proposed Edge of pavement
- Proposed Right of way
- Existing Right of way
- Parcel Boundary
- Delineated Wetland
- Delineated Stream
- Historic Property - Eligible for National Register of Historic Places
- Historic Structure - Eligible for National Register of Historic Places
- Municipal Boundary
- Cemetery



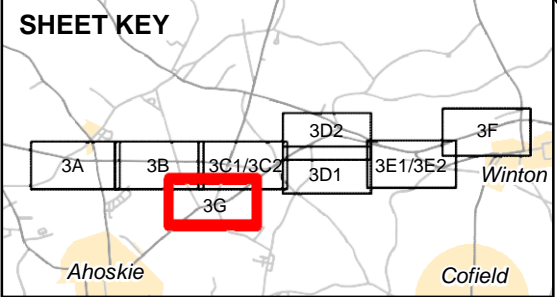
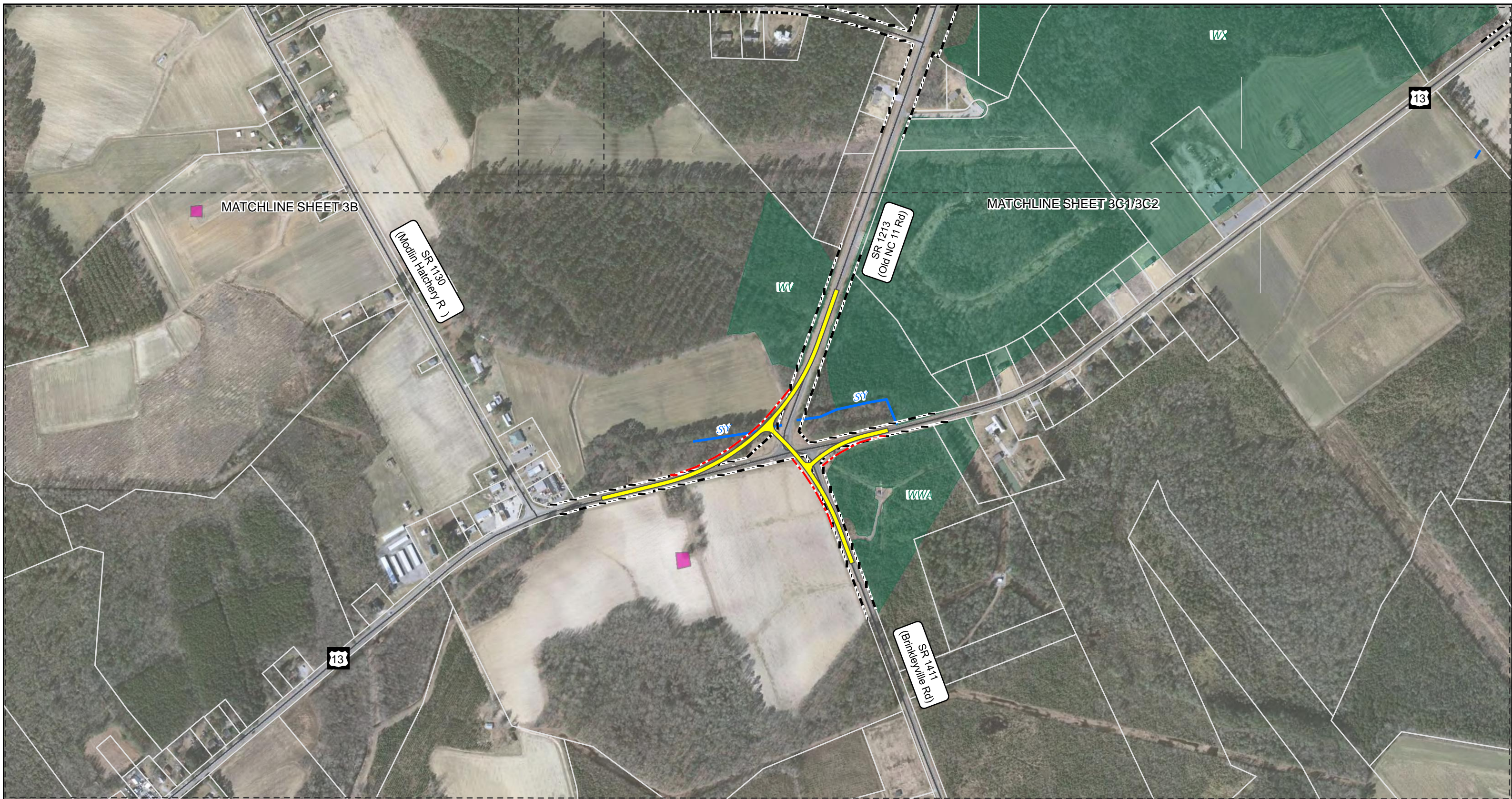
Alternatives 1 and 3

TIP Project Number R-5311
 Improvements to US 13/NC 11
 from NC 11/NC 561 near Ahoskie
 to US 13/US 158/NC 45 near Winton



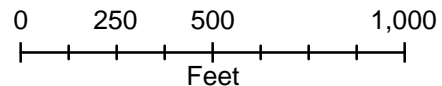
North Carolina Department of
 Transportation
 Project Development and
 Environmental Analysis Unit

Figure
3F



LEGEND

- Proposed Bridge or Culvert
- Proposed Edge of Pavement
- Proposed Right of way
- Existing Right of way
- Parcel Boundary
- Delineated Wetland
- Delineated Stream
- Historic Property - Eligible for National Register of Historic Places
- Historic Structure - Eligible for National Register of Historic Places
- Municipal Boundary
- Cemetery



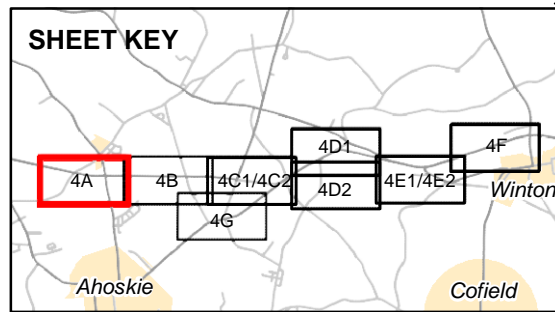
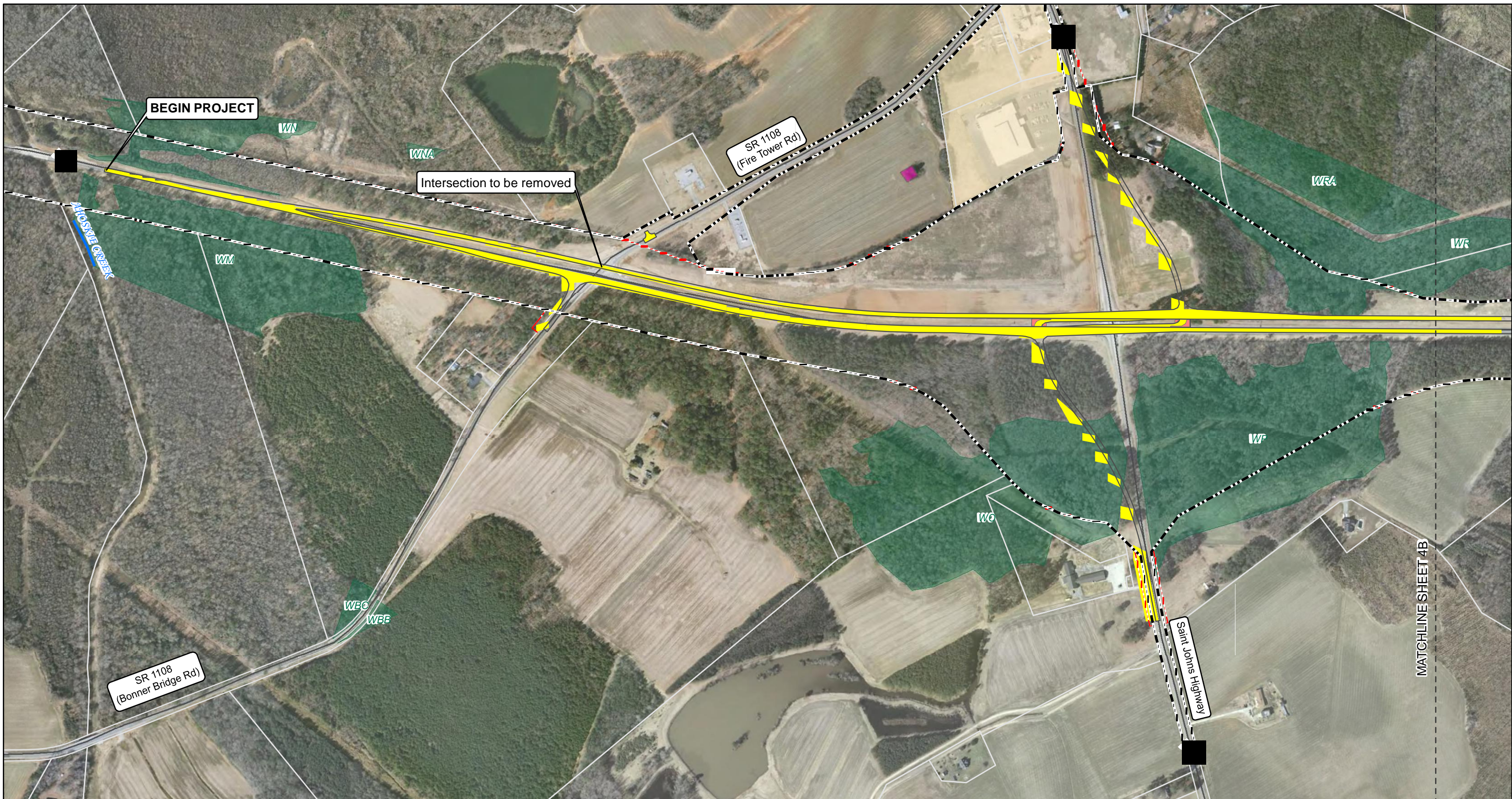
**US 13 & SR 1213/SR1411
Alternative 1 and 3**

TIP Project Number R-5311
Improvements to US 13/NC 11
from NC 11/NC 561 near Ahoskie
to US 13/US 158/NC 45 near Winton



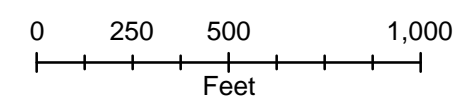
North Carolina Department of
Transportation
Project Development and
Environmental Analysis Unit

Figure
3G



LEGEND

- Proposed Bridge or Culvert
- Proposed Edge of pavement
- Proposed Right of way
- Existing Right of way
- Parcel Boundary
- Delineated Wetland
- Delineated Stream
- Historic Property - Eligible for National Register of Historic Places
- Historic Structure - Eligible for National Register of Historic Places
- Municipal Boundary
- Cemetery



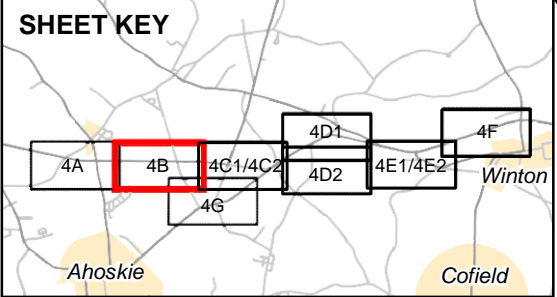
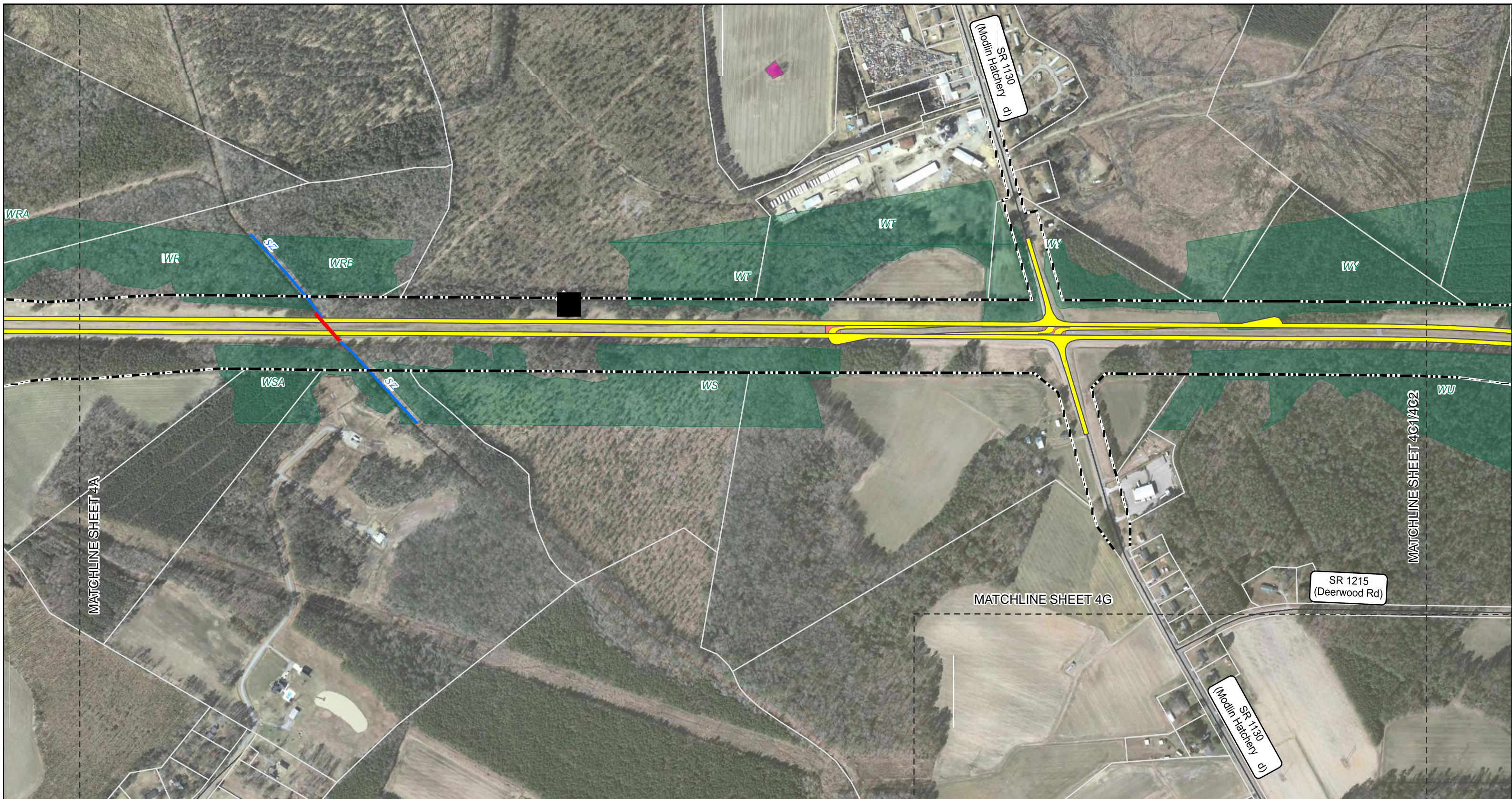
Alternatives 5 and 6

TIP Project Number R-5311
 Improvements to US 13/NC 11
 from NC 11/NC 561 near Ahoskie
 to US 13/US 158/NC 45 near Winton



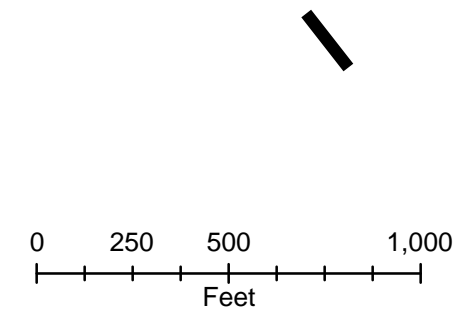
North Carolina Department of
 Transportation
 Project Development and
 Environmental Analysis Unit

Figure
4A



LEGEND

- Proposed Bridge or Culvert
- Proposed Edge of pavement
- Proposed Right of way
- Existing Right of way
- Parcel Boundary
- Delineated Wetland
- Delineated Stream
- Historic Property - Eligible for National Register of Historic Places
- Historic Structure - Eligible for National Register of Historic Places
- Municipal Boundary
- Cemetery



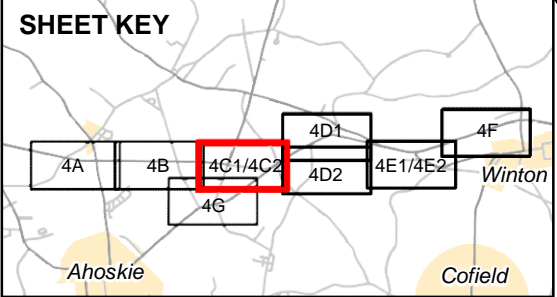
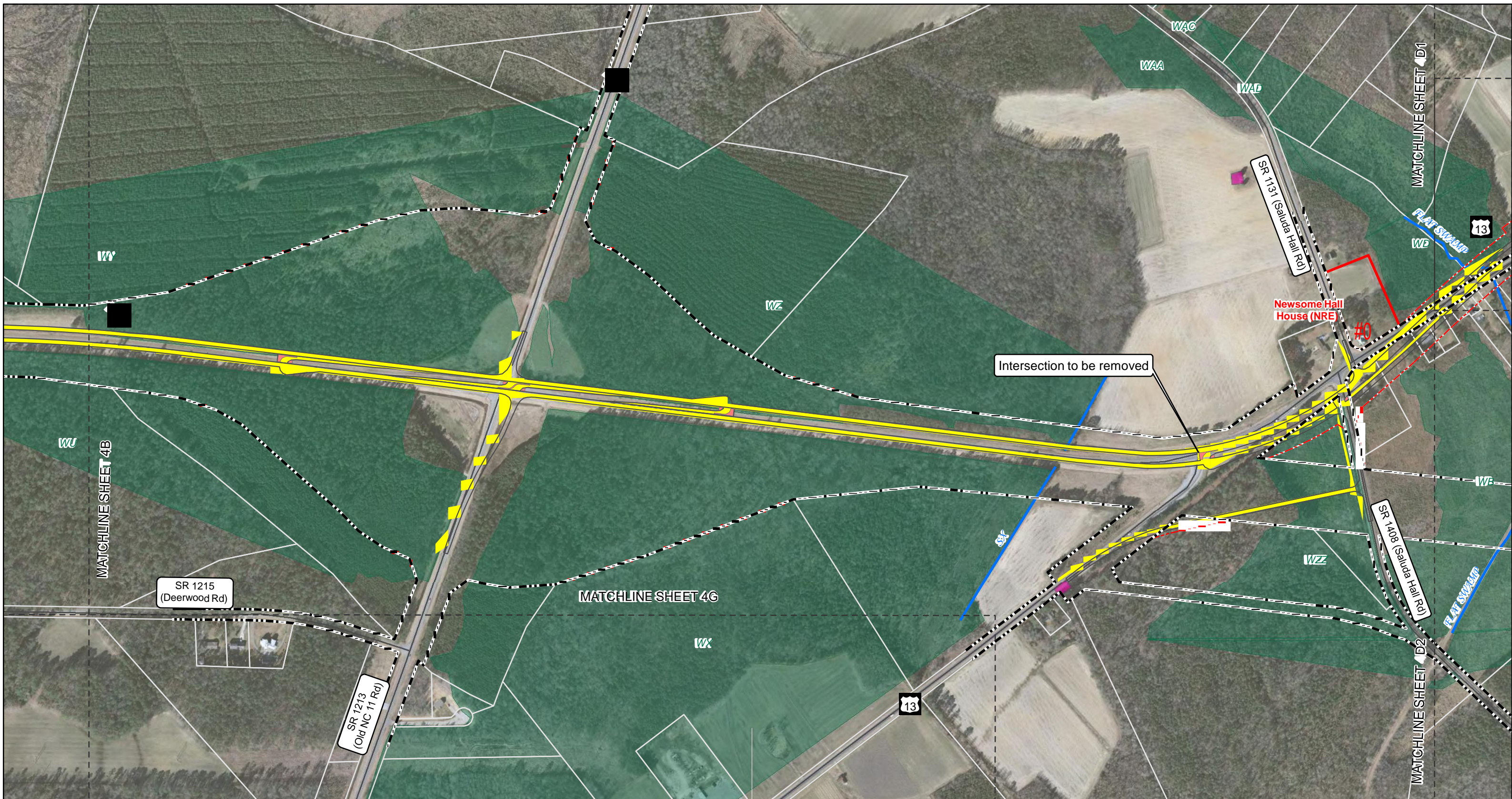
Alternatives 5 and 6

TIP Project Number R-5311
 Improvements to US 13/NC 11
 from NC 11/NC 561 near Ahoskie
 to US 13/US 158/NC 45 near Winton



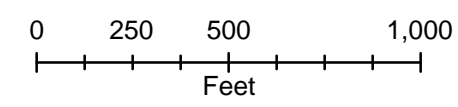
North Carolina Department of
 Transportation
 Project Development and
 Environmental Analysis Unit

Figure
4B



LEGEND

- Proposed Bridge or Culvert
- Proposed Edge of pavement
- Proposed Right of way
- Existing Right of way
- Parcel Boundary
- Delineated Wetland
- Delineated Stream
- Historic Property - Eligible for National Register of Historic Places
- Historic Structure - Eligible for National Register of Historic Places
- Municipal Boundary
- Cemetery



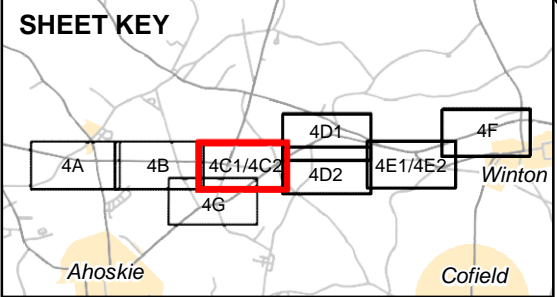
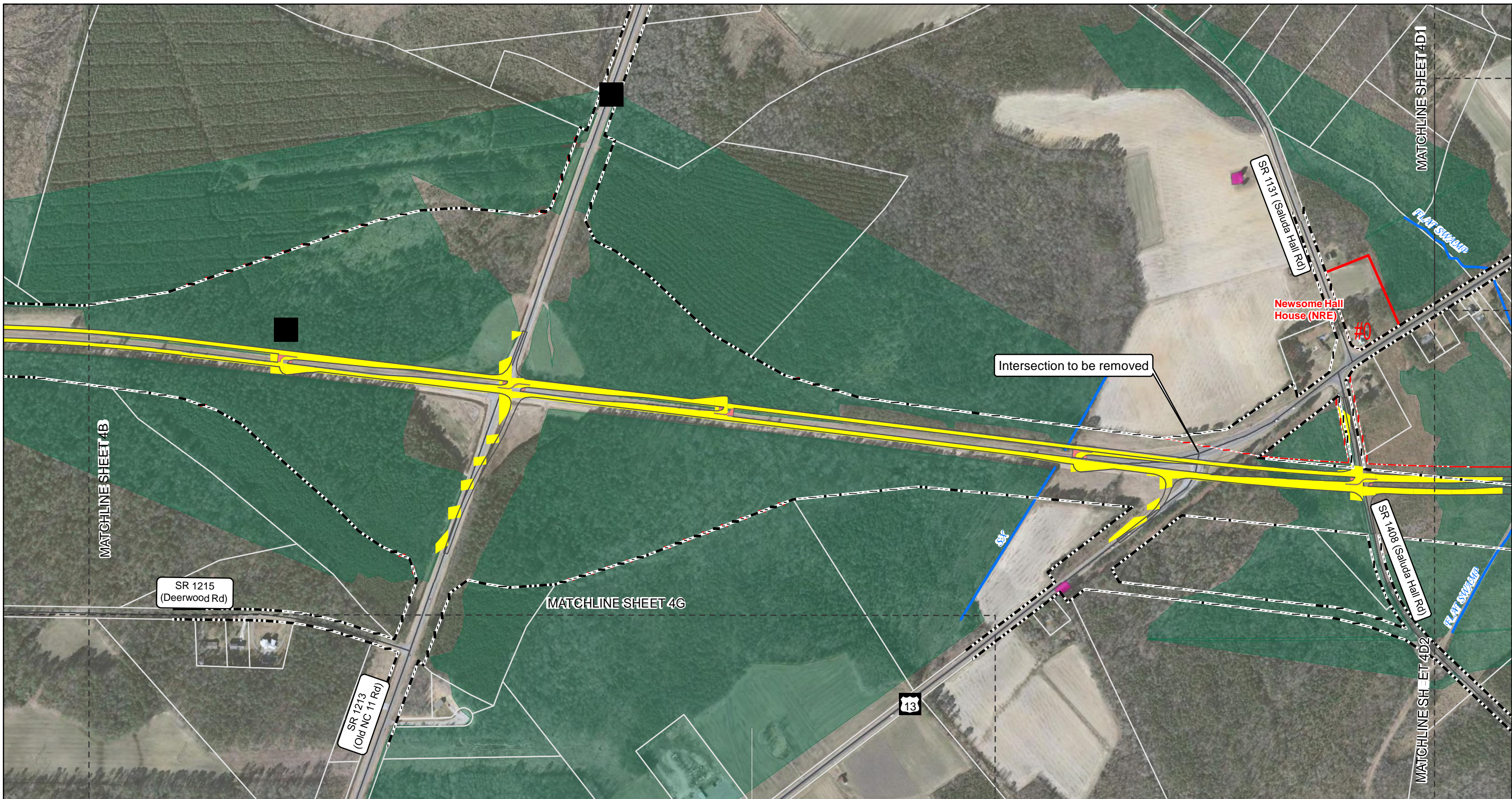
Alternative 5

TIP Project Number R-5311
 Improvements to US 13/NC 11
 from NC 11/NC 561 near Ahoskie
 to US 13/US 158/NC 45 near Winton



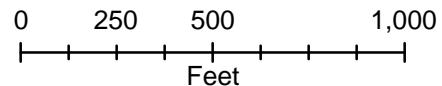
North Carolina Department of
 Transportation
 Project Development and
 Environmental Analysis Unit

Figure
4C1



LEGEND

- Proposed Bridge or Culvert
- Proposed Edge of pavement
- Proposed Right of way
- Existing Right of way
- Parcel Boundary
- Delineated Wetland
- Delineated Stream
- Historic Property - Eligible for National Register of Historic Places
- Historic Structure - Eligible for National Register of Historic Places
- Municipal Boundary
- Cemetery



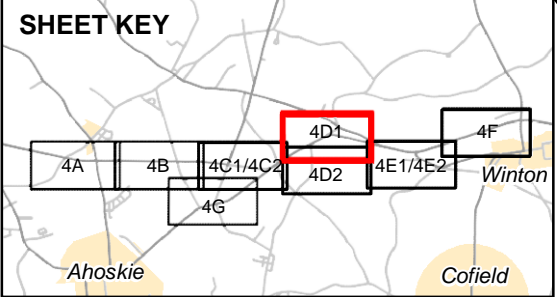
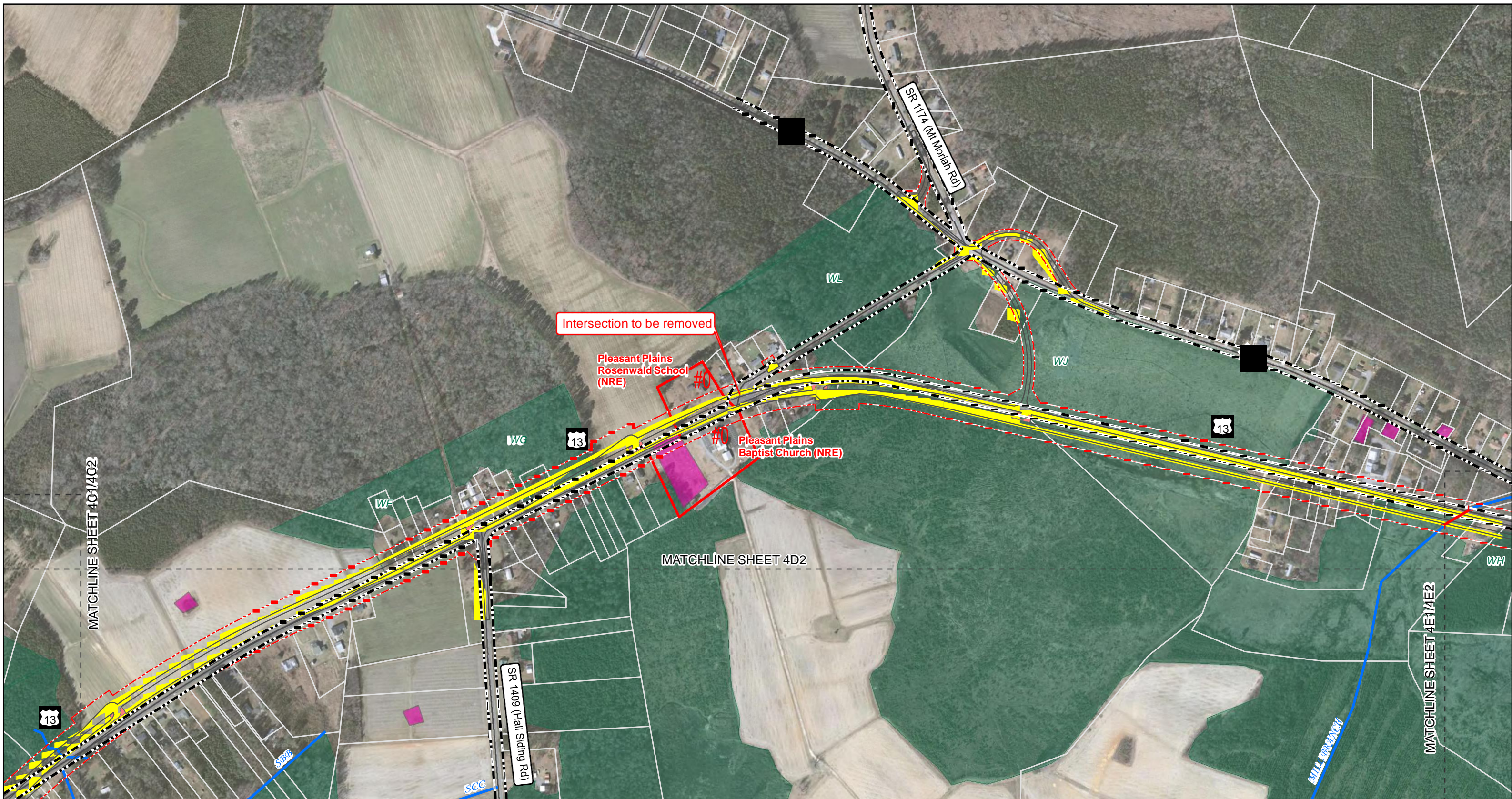
Alternative 6

TIP Project Number R-5311
 Improvements to US 13/NC 11
 from NC 11/NC 561 near Ahoskie
 to US 13/US 158/NC 45 near Winton



North Carolina Department of
 Transportation
 Project Development and
 Environmental Analysis Unit

Figure
4C2



LEGEND

- Proposed Bridge or Culvert
- Proposed Edge of pavement
- Proposed Right of way
- Existing Right of way
- Parcel Boundary
- Delineated Wetland
- Delineated Stream
- Historic Property - Eligible for National Register of Historic Places
- Historic Structure - Eligible for National Register of Historic Places
- Municipal Boundary
- Cemetery

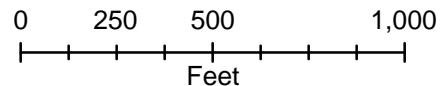
Alternative 5

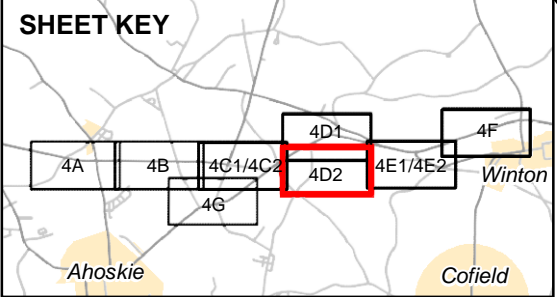
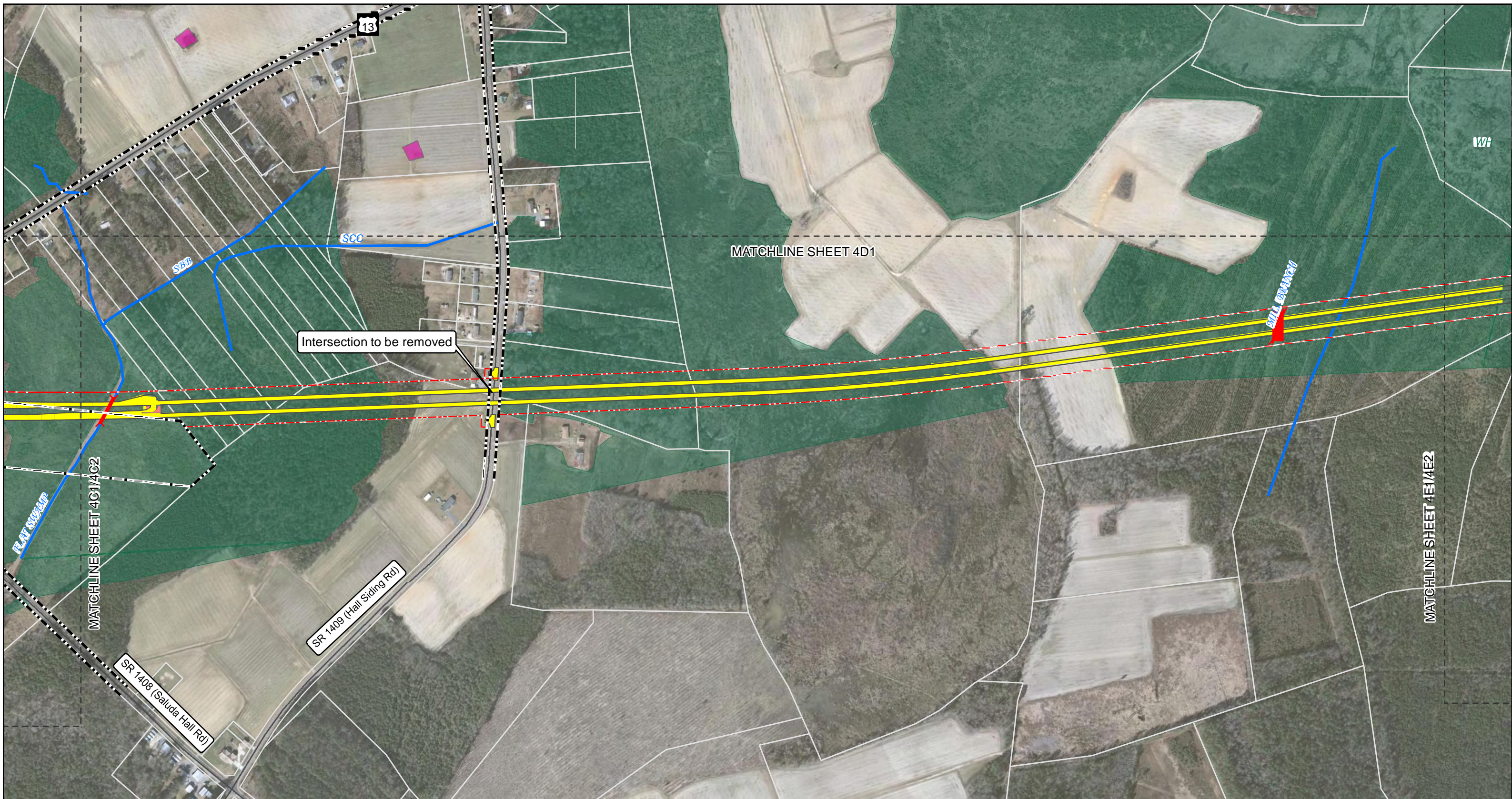
TIP Project Number R-5311
 Improvements to US 13/NC 11
 from NC 11/NC 561 near Ahoskie
 to US 13/US 158/NC 45 near Winton



North Carolina Department of
 Transportation
 Project Development and
 Environmental Analysis Unit

Figure
4D1





LEGEND

- Proposed Bridge or Culvert
- Proposed Edge of pavement
- Proposed Right of way
- Existing Right of way
- Parcel Boundary
- Delineated Wetland
- Delineated Stream
- Historic Property - Eligible for National Register of Historic Places
- Historic Structure - Eligible for National Register of Historic Places
- Municipal Boundary
- Cemetery

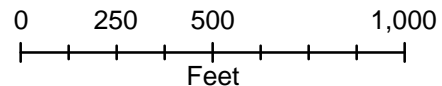
Alternative 6

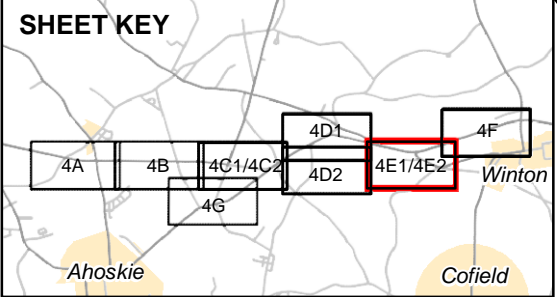
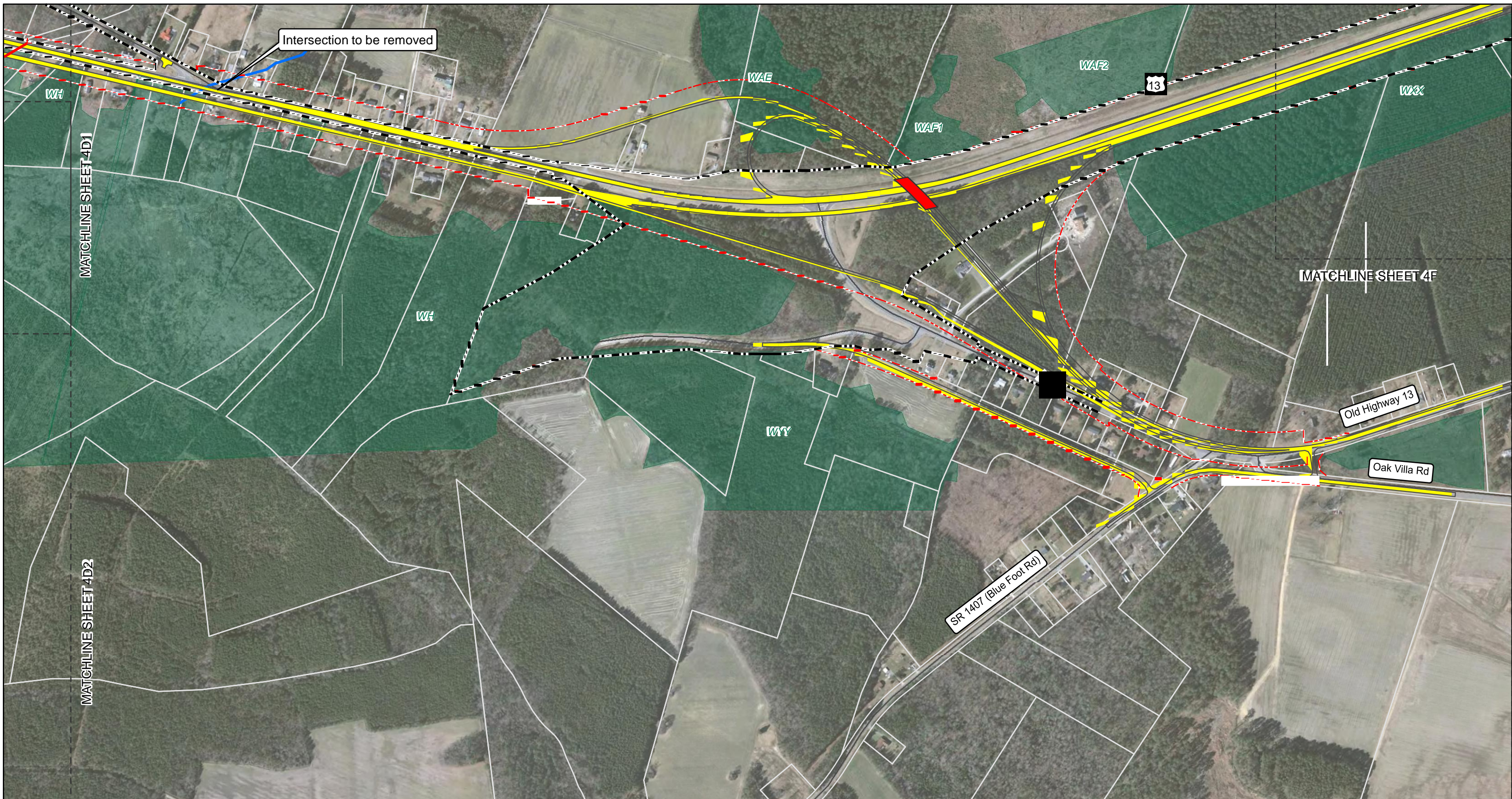
TIP Project Number R-5311
 Improvements to US 13/NC 11
 from NC 11/NC 561 near Ahoskie
 to US 13/US 158/NC 45 near Winton



North Carolina Department of
 Transportation
 Project Development and
 Environmental Analysis Unit

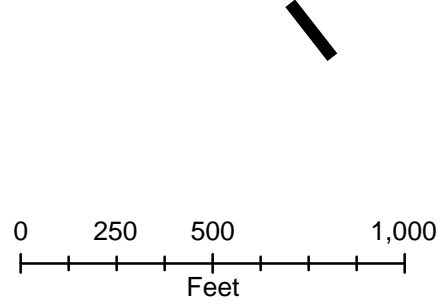
Figure
4D2





LEGEND

- Proposed Bridge or Culvert
- Proposed Edge of pavement
- Proposed Right of way
- Existing Right of way
- Parcel Boundary
- Delineated Wetland
- Delineated Stream
- Historic Property - Eligible for National Register of Historic Places
- Historic Structure - Eligible for National Register of Historic Places
- Municipal Boundary
- Cemetery



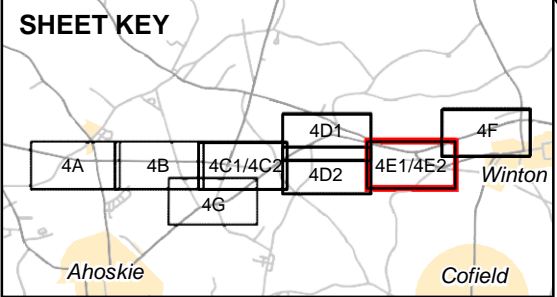
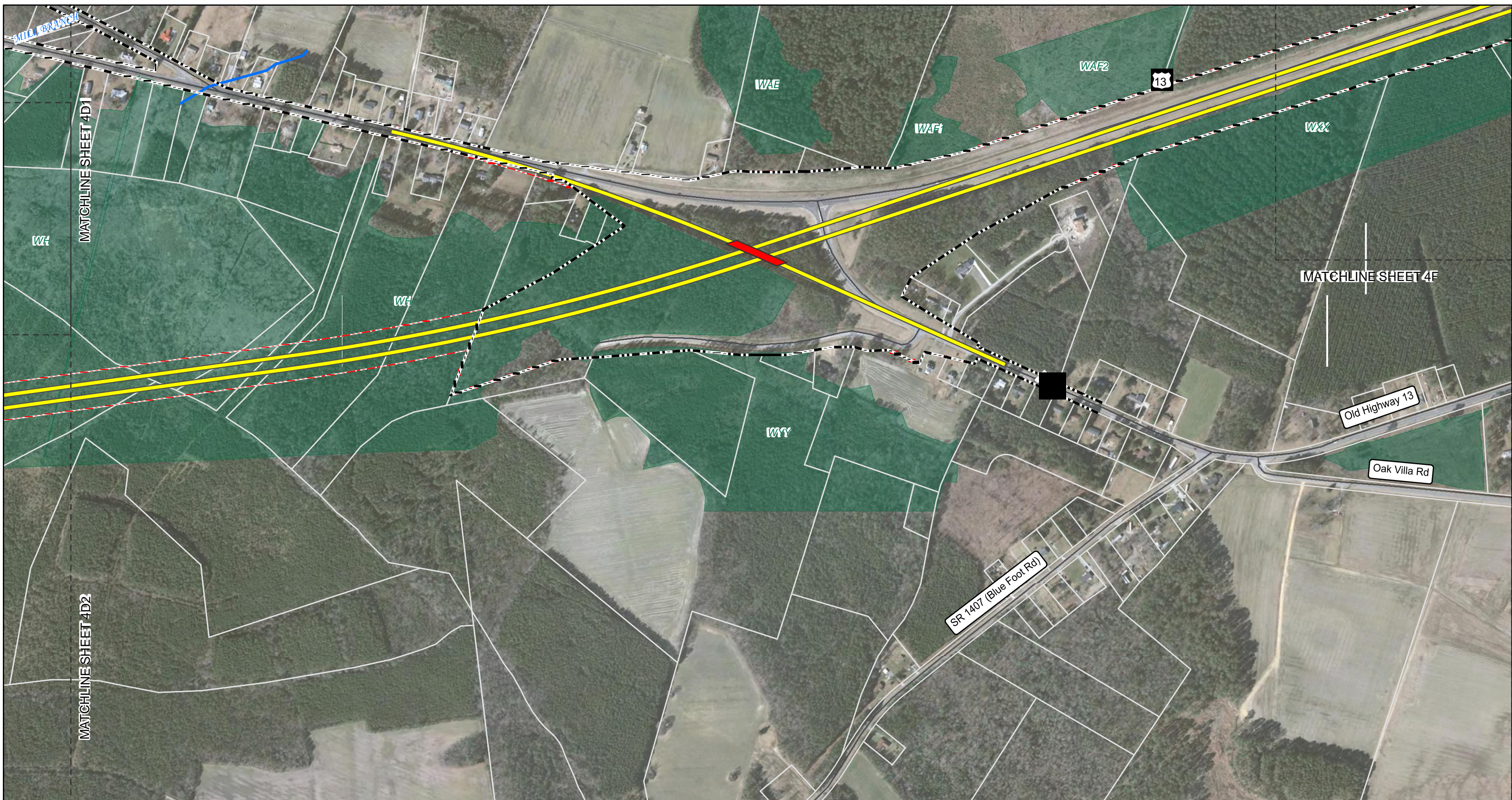
Alternative 5

TIP Project Number R-5311
 Improvements to US 13/NC 11
 from NC 11/NC 561 near Ahoskie
 to US 13/US 158/NC 45 near Winton



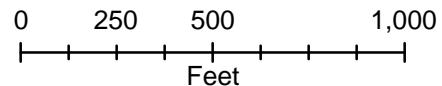
North Carolina Department of
 Transportation
 Project Development and
 Environmental Analysis Unit

Figure
4E1



LEGEND

- Proposed Bridge or Culvert
- Proposed Edge of pavement
- Proposed Right of way
- Existing Right of way
- Parcel Boundary
- Delineated Wetland
- Delineated Stream
- Historic Property - Eligible for National Register of Historic Places
- Historic Structure - Eligible for National Register of Historic Places
- Municipal Boundary
- Cemetery



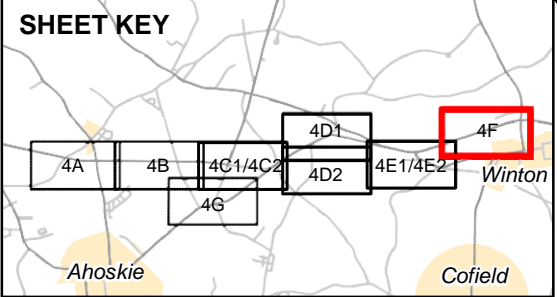
Alternative 6

TIP Project Number R-5311
 Improvements to US 13/NC 11
 from NC 11/NC 561 near Ahoskie
 to US 13/US 158/NC 45 near Winton



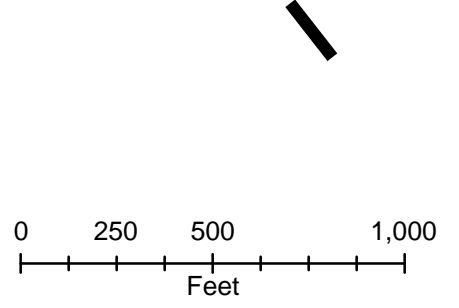
North Carolina Department of
 Transportation
 Project Development and
 Environmental Analysis Unit

Figure
4E2



LEGEND

- Proposed Bridge or Culvert
- Proposed Edge of pavement
- Proposed Right of way
- Existing Right of way
- Parcel Boundary
- Delineated Wetland
- Delineated Stream
- Historic Property - Eligible for National Register of Historic Places
- Historic Structure - Eligible for National Register of Historic Places
- Municipal Boundary
- Cemetery



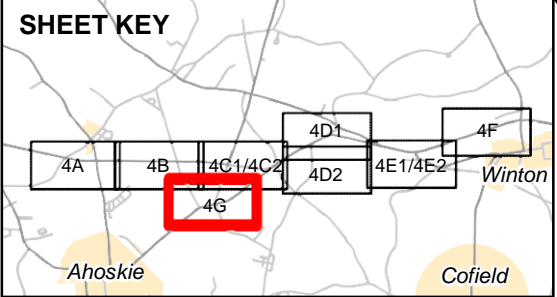
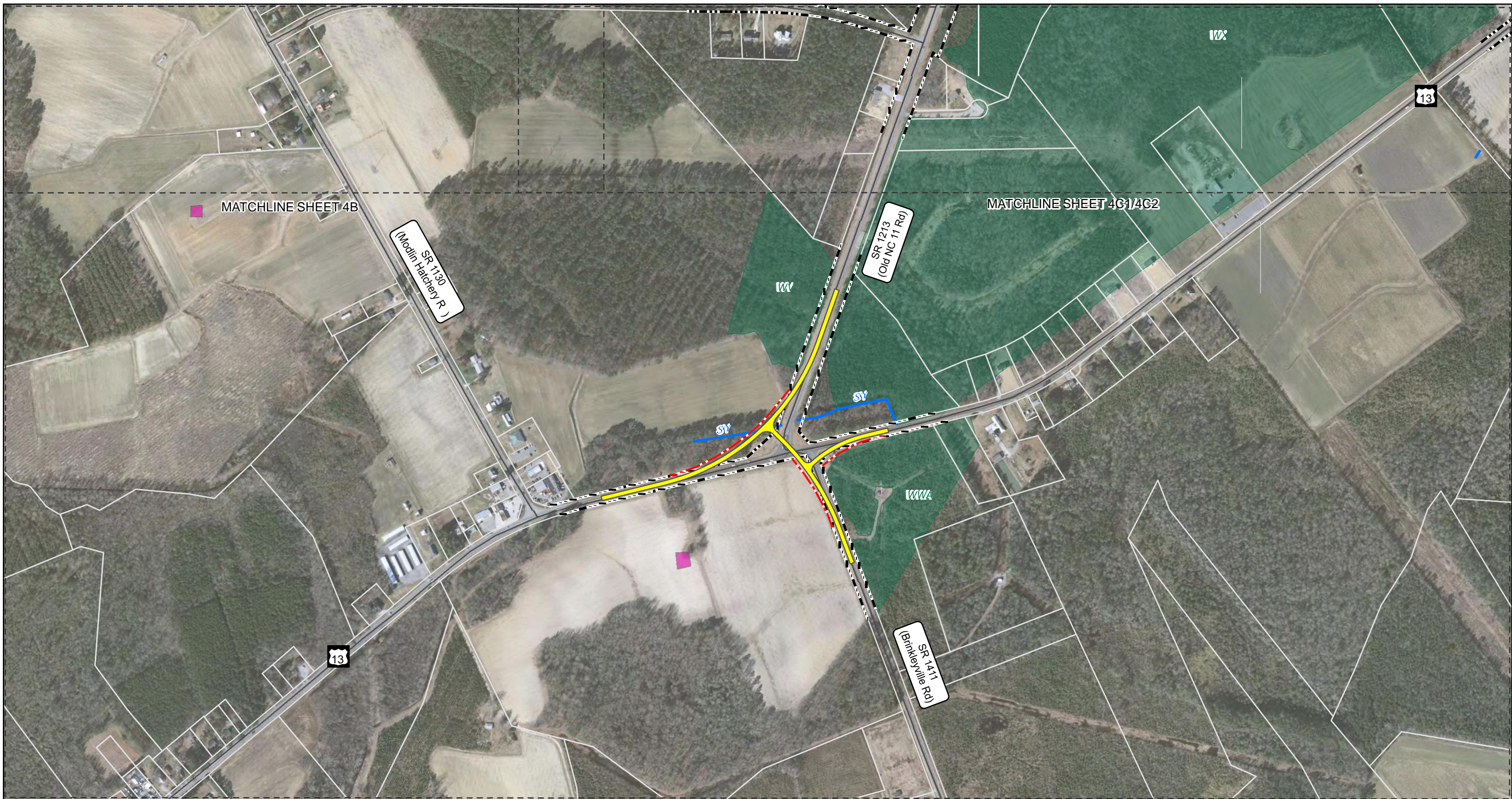
Alternatives 5 and 6

TIP Project Number R-5311
 Improvements to US 13/NC 11
 from NC 11/NC 561 near Ahoskie
 to US 13/US 158/NC 45 near Winton



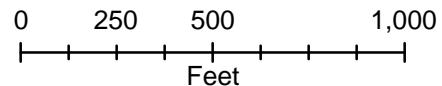
North Carolina Department of
 Transportation
 Project Development and
 Environmental Analysis Unit

Figure
4F



LEGEND

- Proposed Bridge or Culvert
- Proposed Edge of Pavement
- Proposed Right of way
- Existing Right of way
- Parcel Boundary
- Delineated Wetland
- Delineated Stream
- Historic Property - Eligible for National Register of Historic Places
- Historic Structure - Eligible for National Register of Historic Places
- Municipal Boundary
- Cemetery



**US 13 & SR 1212/SR 1411
Alternative 5 and 6**

TIP Project Number R-5311
Improvements to US 13/NC 11
from NC 11/NC 561 near Ahoskie
to US 13/US 158/NC 45 near Winton



North Carolina Department of
Transportation
Project Development and
Environmental Analysis Unit

Figure
4G