

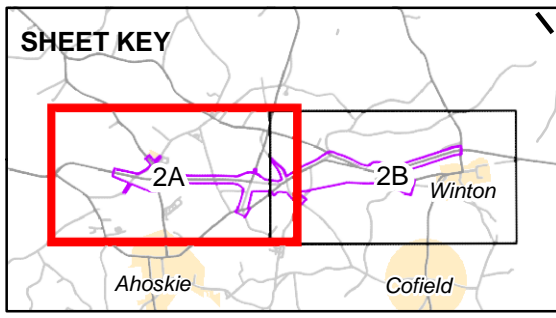
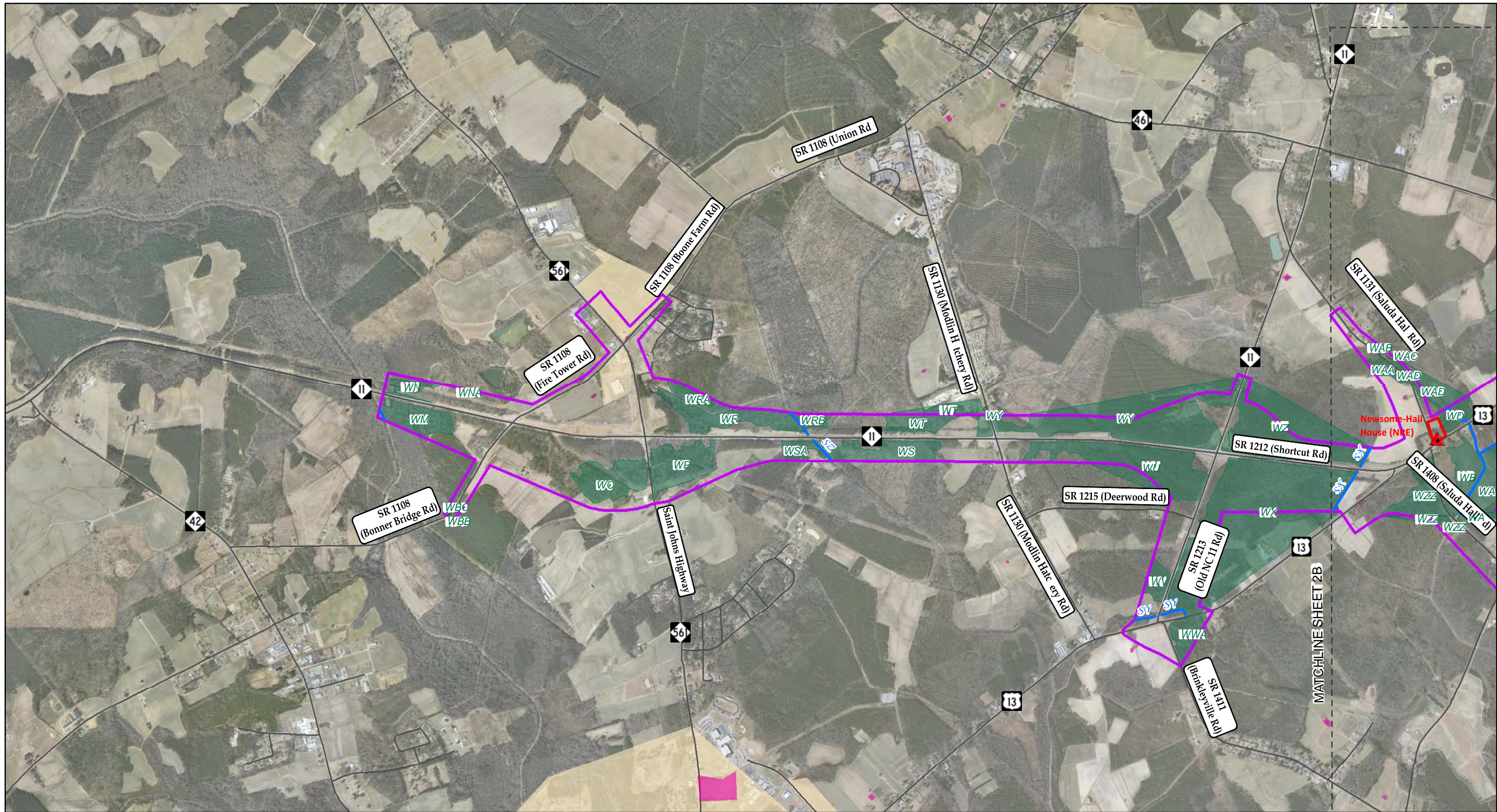
LEGEND

Study Area	TIP Projects
Municipal Limits	
Alternatives 1 and 6	
Alternatives 3 and 5	
US Route	
NC Route	
Secondary Roads	

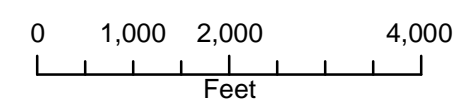
Vicinity Map

TIP Project Number R-5311
 Improvements to US 13/NC 11
 from NC 11/NC 561 near Ahoskie
 to US 13/US 158/NC 45 near Winton

	North Carolina Department of Transportation	Figure 1
	Project Development and Environmental Analysis Branch	



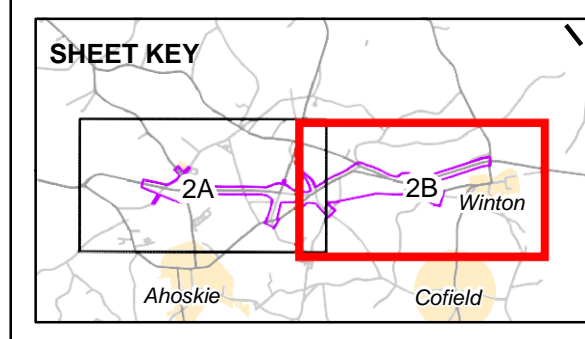
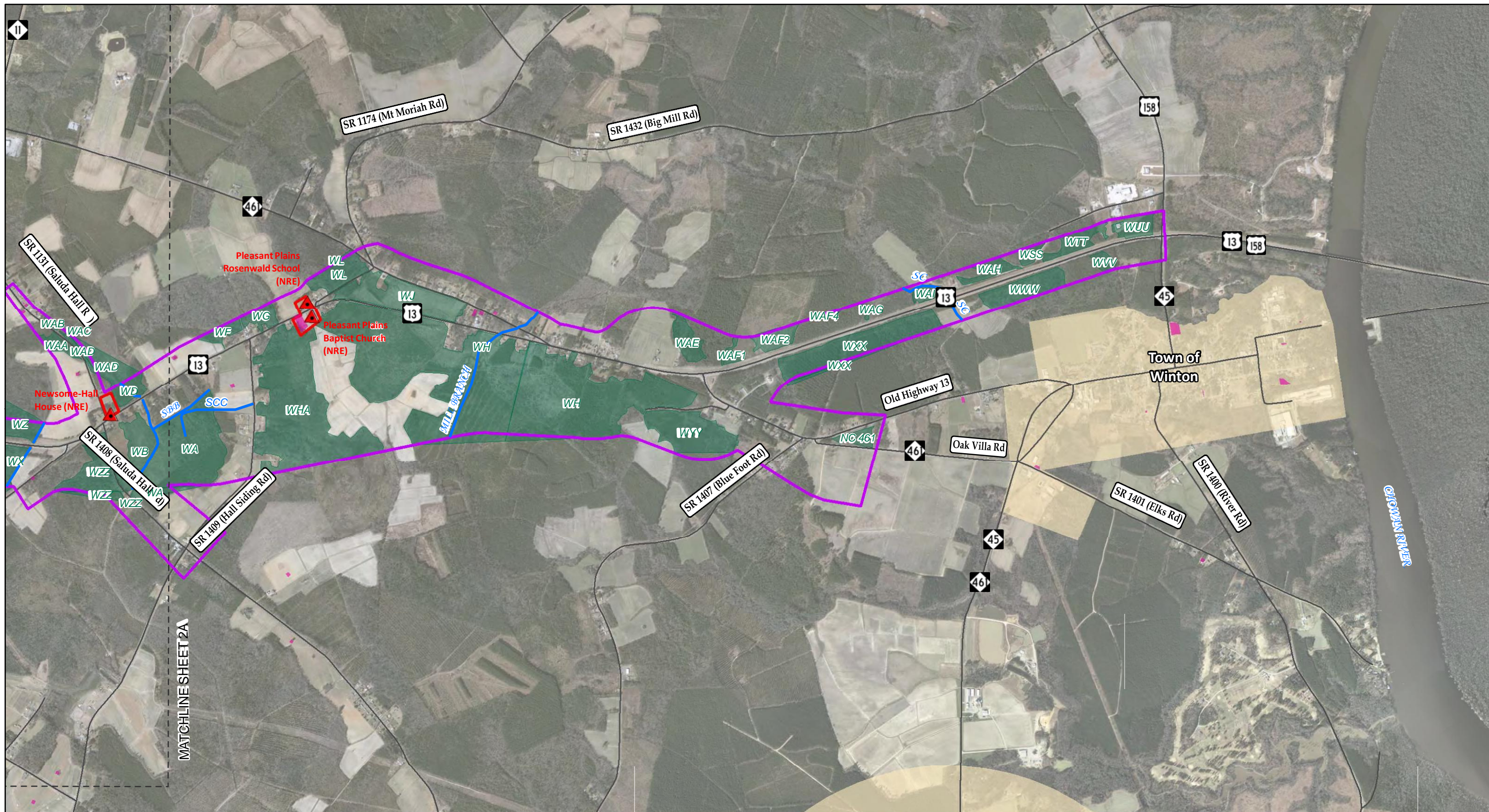
- LEGEND**
- Study Area
 - Municipal Boundary
 - Cemetery
 - Delineated Stream
 - Delineated Wetland
 - Historic Property - National Register Listed or Eligible
 - Historic Structure - National Register Listed or Eligible



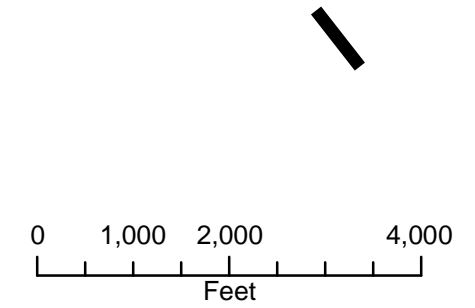
Environmental Features

TIP Project Number R-5311
 Improvements to US 13/NC 11
 from NC 11/NC 561 near Ahoskie
 to US 13/US 158/NC 45 near Winton

North Carolina Department of
 Transportation
 Project Development and
 Environmental Analysis Unit




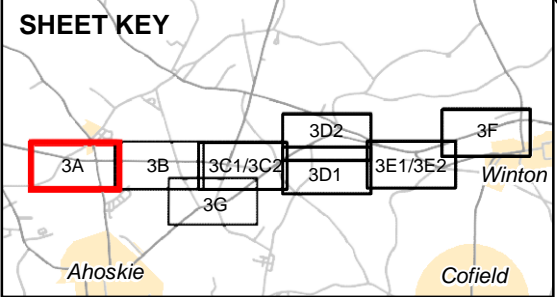
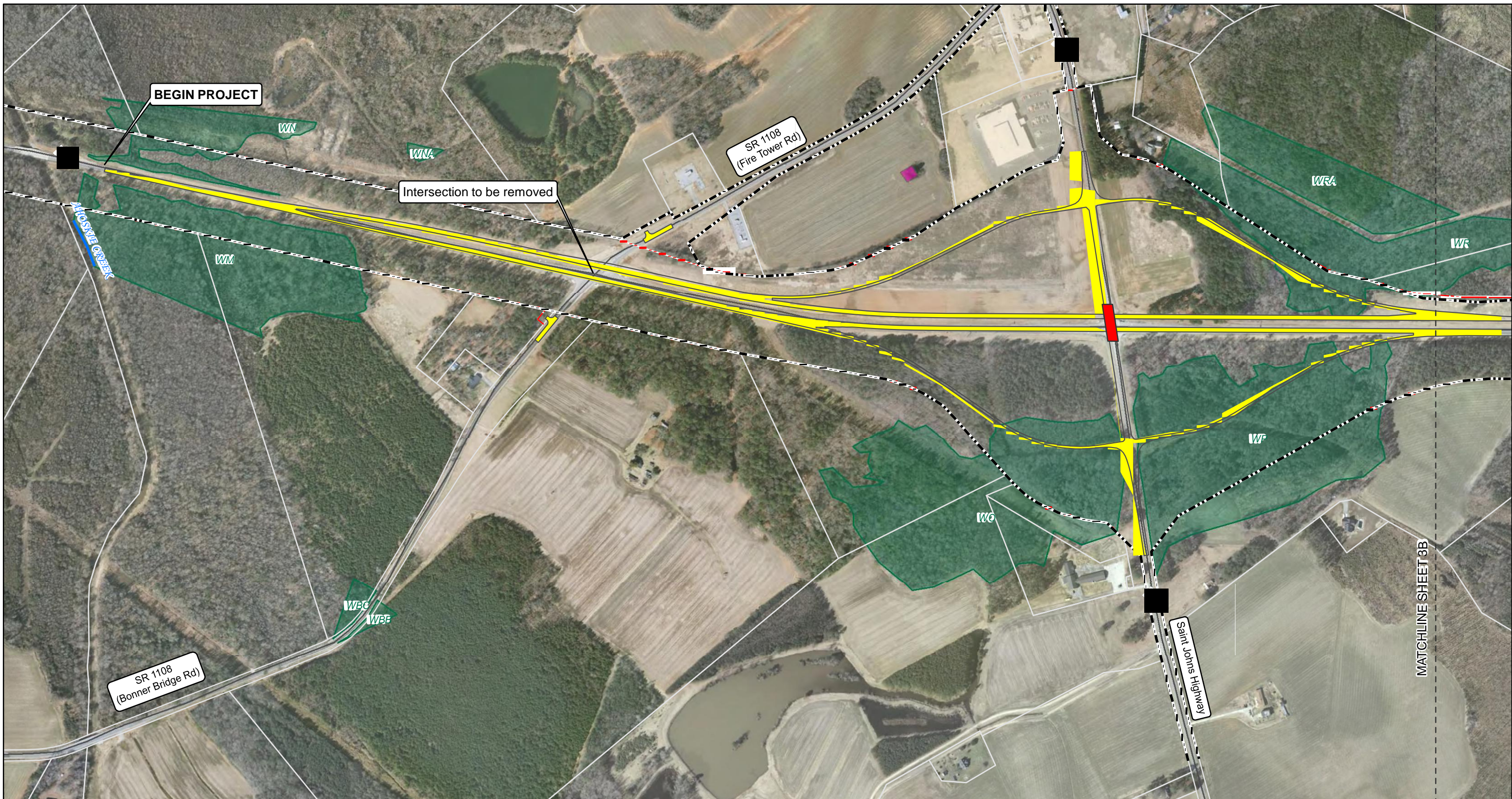
- LEGEND**
- Study Area
 - Municipal Boundary
 - Cemetery
 - Delineated Stream
 - Delineated Wetland
 - Historic Property - National Register Listed or Eligible
 - ▲ Historic Structure - National Register Listed or Eligible



Environmental Features

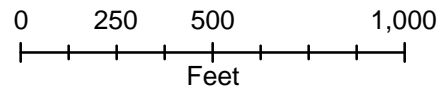
TIP Project Number R-5311
Improvements to US 13/NC 11
from NC 11/NC 561 near Ahoskie
to US 13/US 158/NC 45 near Winton

	North Carolina Department of Transportation Project Development and Environmental Analysis Unit	Figure 2B
---	--	---------------------



LEGEND

- Proposed Bridge or Culvert
- Proposed Edge of pavement
- Proposed Right of way
- Existing Right of way
- Parcel Boundary
- Delineated Wetland
- Delineated Stream
- Historic Property - Eligible for National Register of Historic Places
- Historic Structure - Eligible for National Register of Historic Places
- Municipal Boundary
- Cemetery



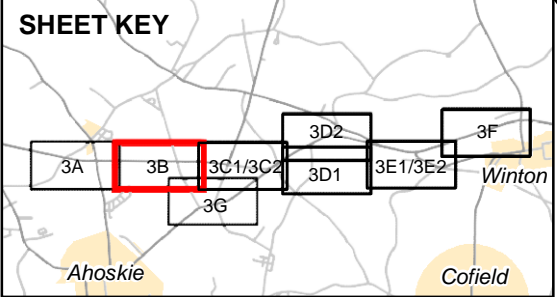
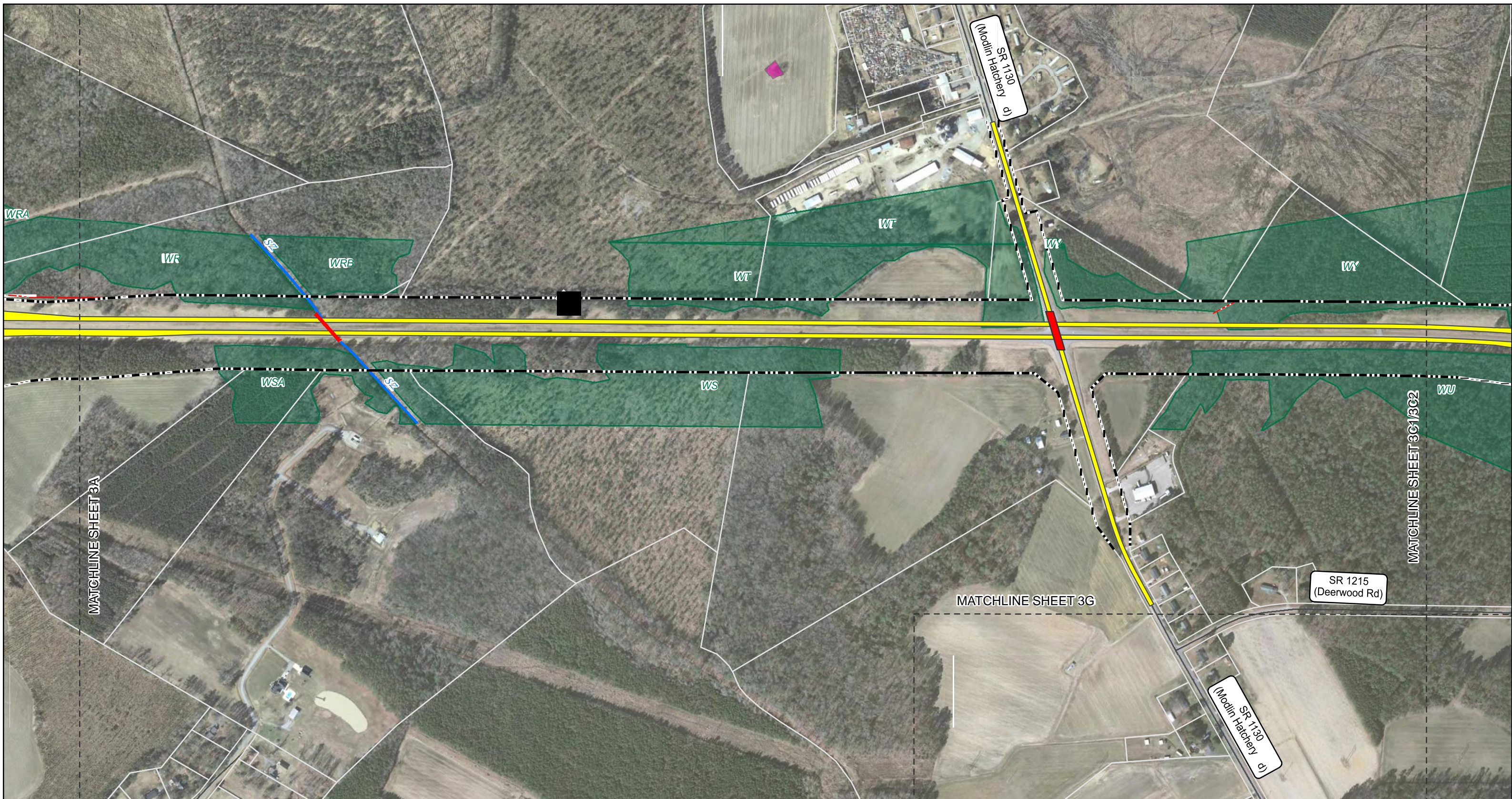
Alternatives 1 and 3

TIP Project Number R-5311
 Improvements to US 13/NC 11
 from NC 11/NC 561 near Ahoskie
 to US 13/US 158/NC 45 near Winton



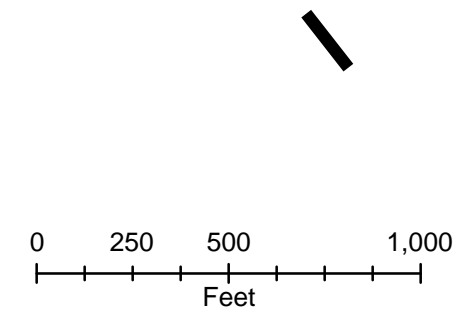
North Carolina Department of
 Transportation
 Project Development and
 Environmental Analysis Unit

Figure
3A



LEGEND

- Proposed Bridge or Culvert
- Proposed Edge of pavement
- Proposed Right of way
- Existing Right of way
- Parcel Boundary
- Delineated Wetland
- Delineated Stream
- Historic Property - Eligible for National Register of Historic Places
- Historic Structure - Eligible for National Register of Historic Places
- Municipal Boundary
- Cemetery



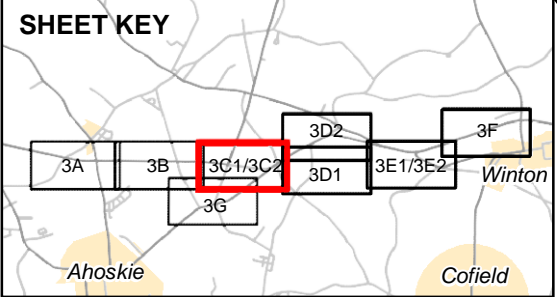
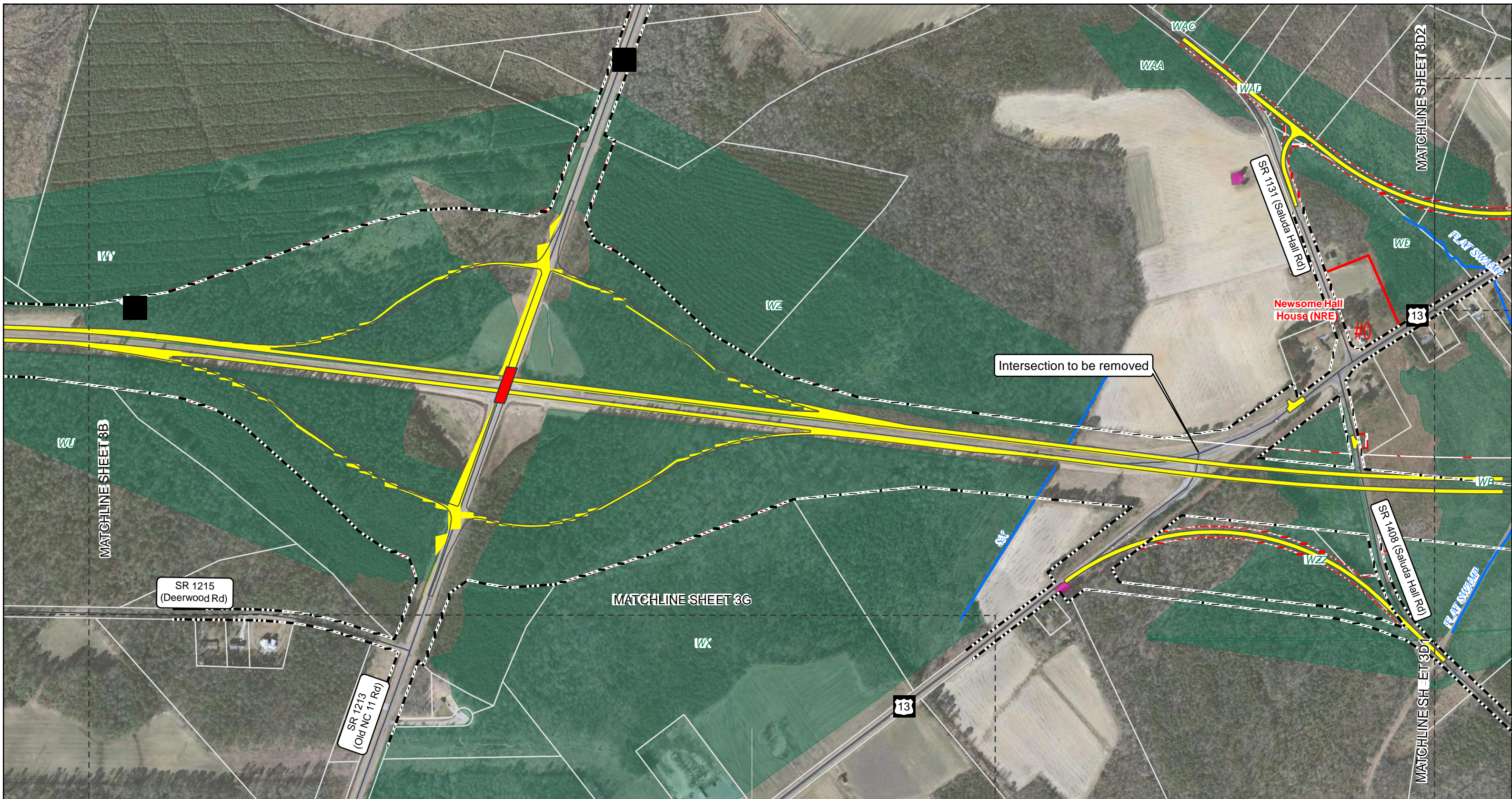
Alternatives 1 and 3

TIP Project Number R-5311
 Improvements to US 13/NC 11
 from NC 11/NC 561 near Ahoskie
 to US 13/US 158/NC 45 near Winton



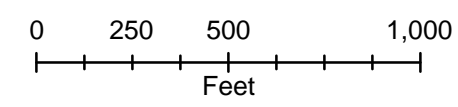
North Carolina Department of
 Transportation
 Project Development and
 Environmental Analysis Unit

Figure
3B



LEGEND

- Proposed Bridge or Culvert
- Proposed Edge of Pavement
- Proposed Right of way
- Existing Right of way
- Parcel Boundary
- Delineated Wetland
- Delineated Stream
- Historic Property - Eligible for National Register of Historic Places
- Historic Structure - Eligible for National Register of Historic Places
- Municipal Boundary
- Cemetery



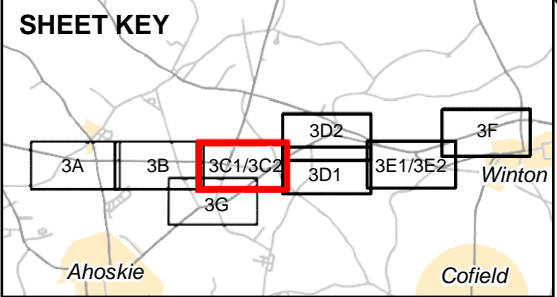
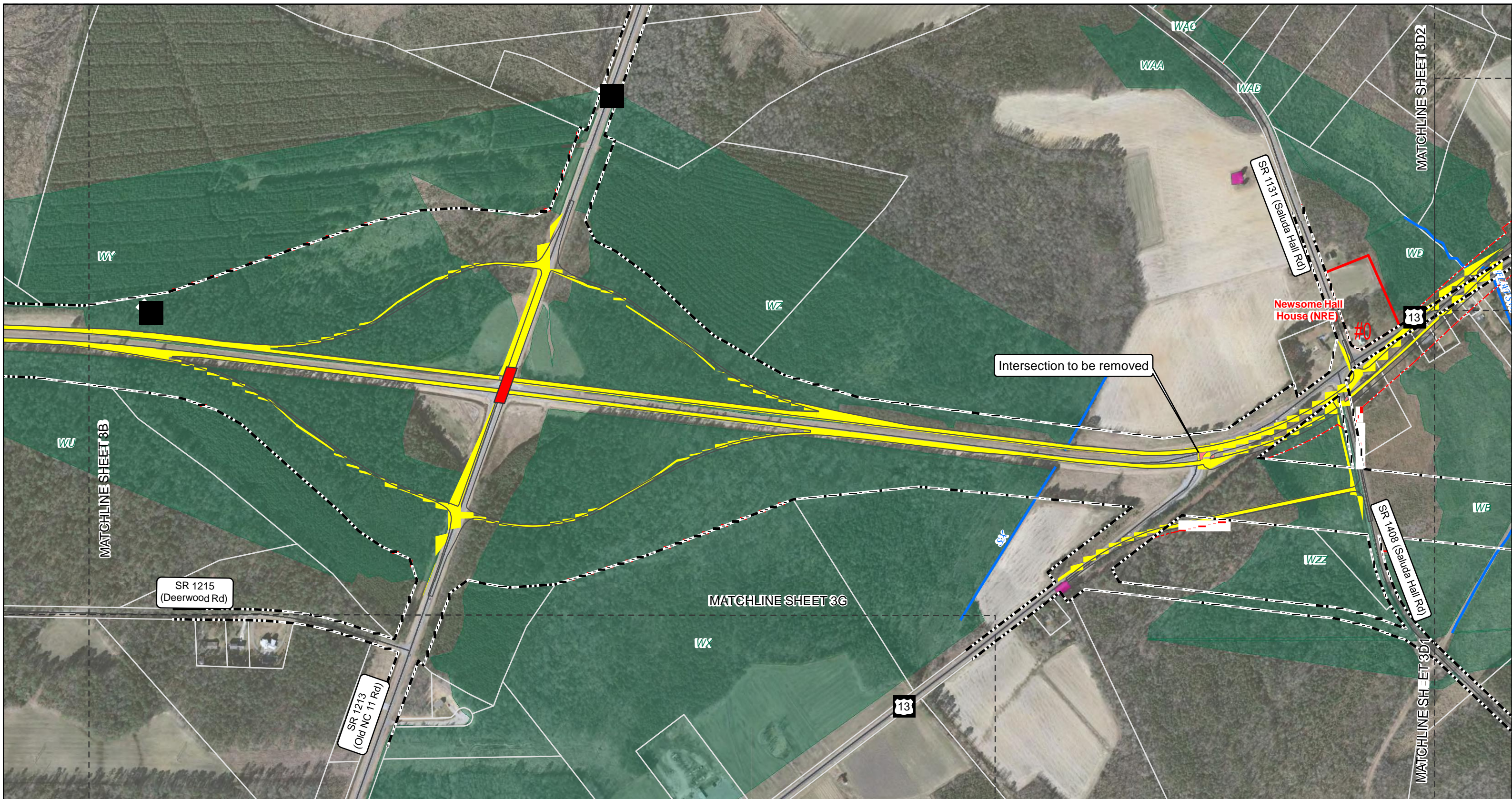
Alternative 1

TIP Project Number R-5311
 Improvements to US 13/NC 11
 from NC 11/NC 561 near Ahoskie
 to US 13/US 158/NC 45 near Winton



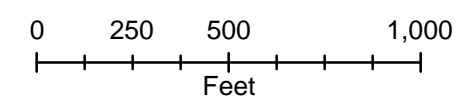
North Carolina Department of
 Transportation
 Project Development and
 Environmental Analysis Unit

Figure
3C1



LEGEND

- Proposed Bridge or Culvert
- Proposed Edge of pavement
- Proposed Right of way
- Existing Right of way
- Parcel Boundary
- Delineated Wetland
- Delineated Stream
- Historic Property - Eligible for National Register of Historic Places
- Historic Structure - Eligible for National Register of Historic Places
- Municipal Boundary
- Cemetery



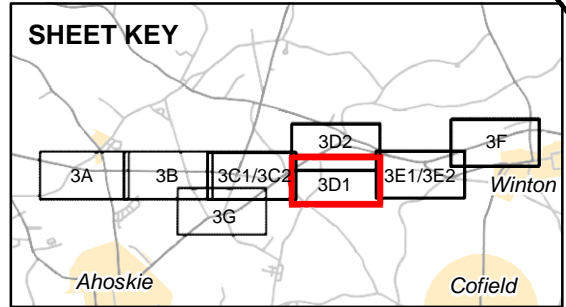
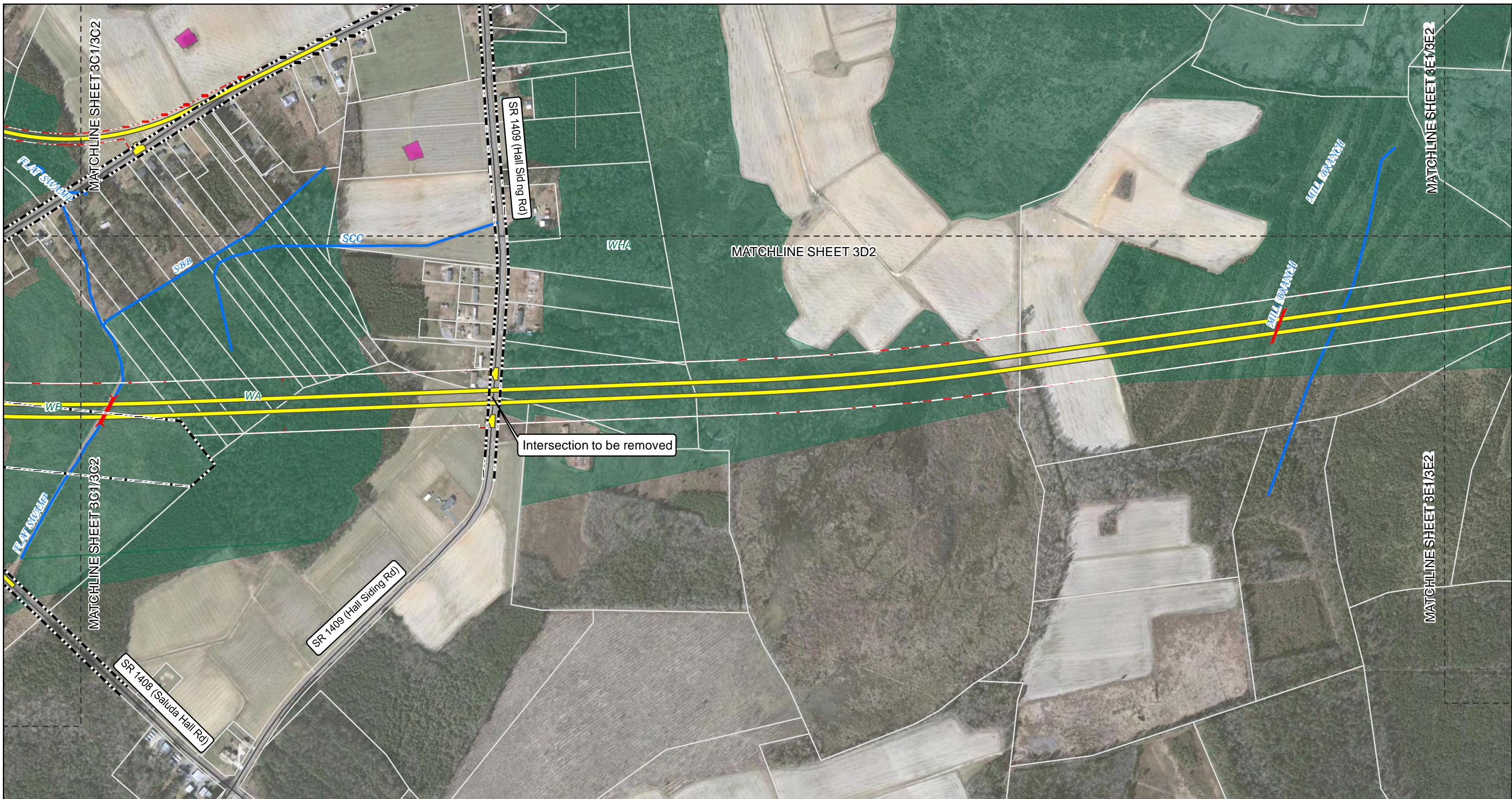
Alternative 3

TIP Project Number R-5311
 Improvements to US 13/NC 11
 from NC 11/NC 561 near Ahoskie
 to US 13/US 158/NC 45 near Winton



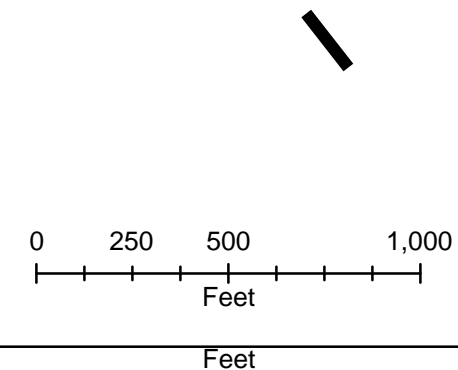
North Carolina Department of
 Transportation
 Project Development and
 Environmental Analysis Unit

Figure
3C2



LEGEND

- Proposed Bridge or Culvert
- Proposed Edge of Pavement
- Proposed Right of way
- Existing Right of way
- Parcel Boundary
- Delineated Wetland
- Delineated Stream
- Historic Property - Eligible for National Register of Historic Places
- Historic Structure - Eligible for National Register of Historic Places
- Municipal Boundary
- Cemetery



Alternative 1

TIP Project Number R-5311
 Improvements to US 13/NC 11
 from NC 11/NC 561 near Ahoskie
 to US 13/US 158/NC 45 near Winton



North Carolina Department of
 Transportation
 Project Development and
 Environmental Analysis Unit

Figure
3D1
 North