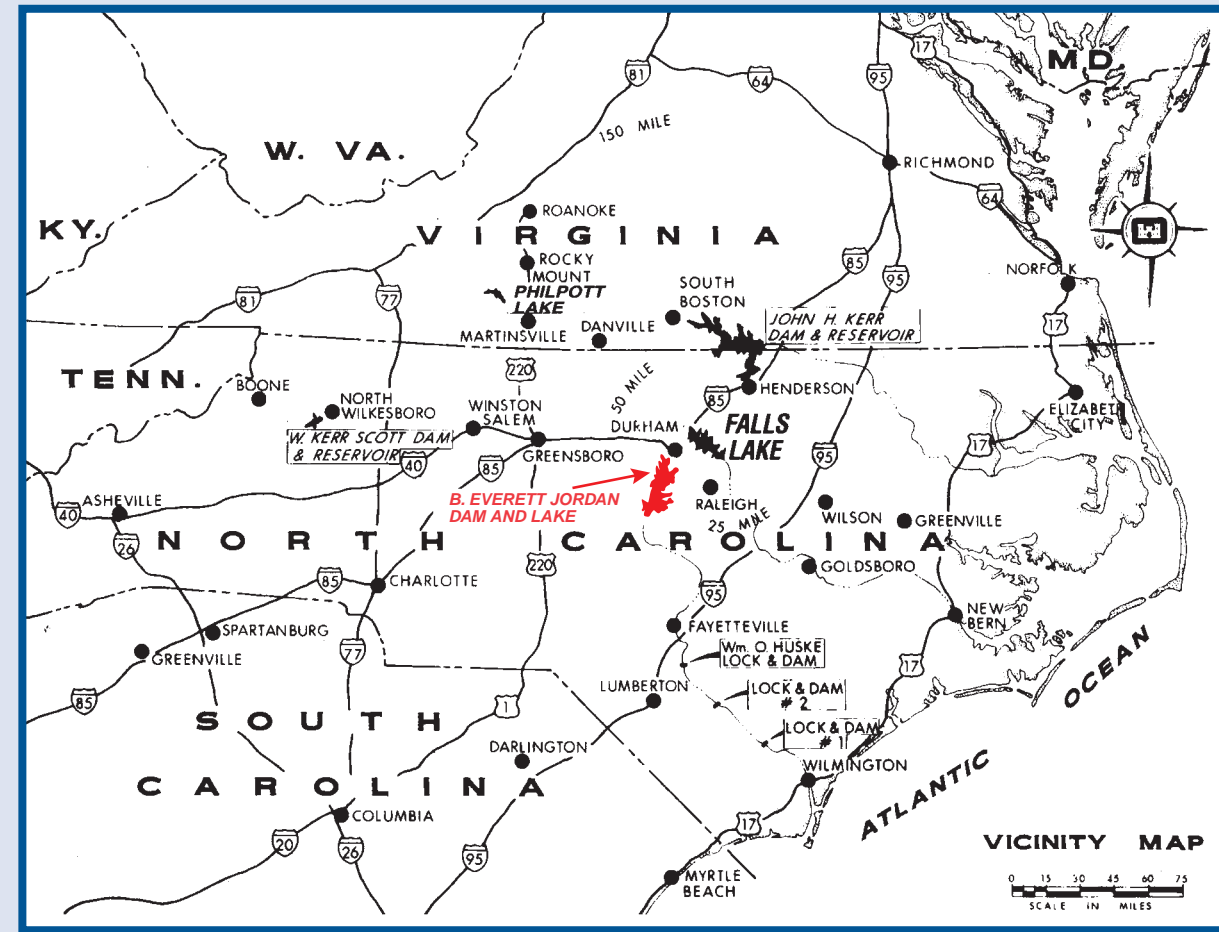




US Army Corps of Engineers
Wilmington District

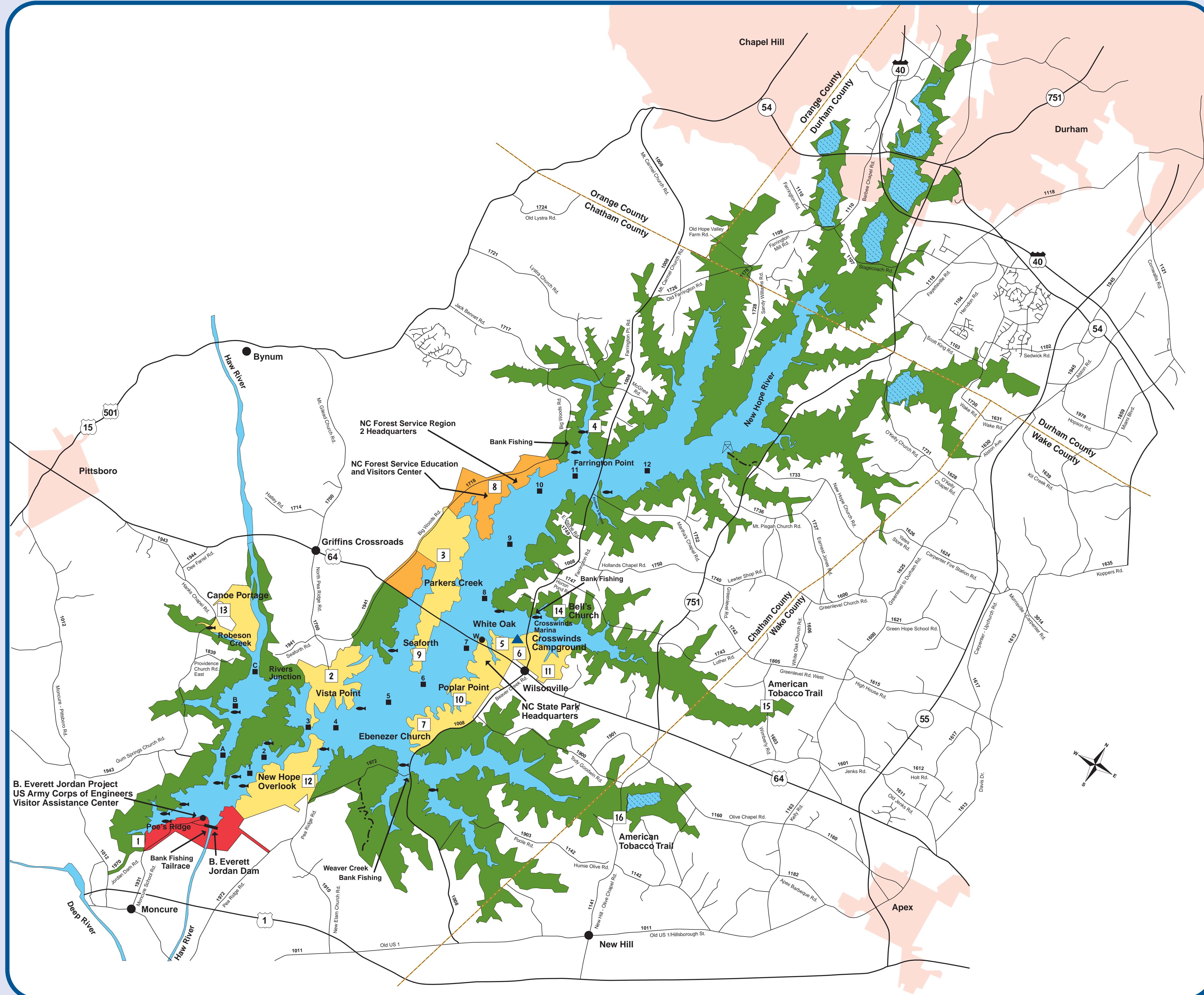
B. EVERETT JORDAN DAM AND LAKE



Watch'em! Constantly and actively supervise your children.
Leave It! Leave the alcohol at home.
Learn It! Learn to swim.
Check It! Check to be sure your boat has all required and necessary safety equipment.
Take It! Take a safe boating course.
Never! Don't dive into lakes and rivers.

For Additional Information

Any Emergency	911
To report boating and wildlife violations	1-800-662-7137
US Army Corps of Engineers (USACE)	1-919-542-4501
Jordan Lake State Recreation Area	1-919-362-0586
Crosswinds Marina	1-919-362-5391
Educational State Forest	1-919-542-1154
N.C. Wildlife Resources Commission, Regulation Information	1-919-707-0030
Lake Elevation and Discharge Information	1-919-542-4501 x1
Windtalker	1-919-387-5969
NOAA Weather	1-919-515-8225



LOCATION	FACILITIES																MANAGING AGENCY
	RECREATION AREAS	ACCESSIBLE CAMPSITES	PICNIC SITES	RESTROOMS	PICNIC SWIM BEACH	FISHING PERMITS	CANOE LUNCH	CAMPER ONLY AREAS	24 HOURS ACCESS	MANAGING AGENCY	24 HOURS ACCESS	MANAGING AGENCY	24 HOURS ACCESS	MANAGING AGENCY	24 HOURS ACCESS	MANAGING AGENCY	
1	Poe's Ridge Boat Ramp																D
	B. Everett Jordan Dam																D
	Tailrace																D
2	Vista Point																A
3	Parkers Creek																A
4	Farrington Point																C
5	White Oak																A
6	Crosswinds Marina																B
7	Ebenezer Church																A
8	Jordan Lake Educational State Forest																E
9	Seaforth																A
10	Poplar Point																A
11	Crosswinds Campground																A
12	New Hope Overlook																A
13	Robeson Creek																A
14	Bell's Church																C
15	American Tobacco Trail - Wimberly Road																F
16	American Tobacco Trail - New Hill-Olive Chapel Road																F

LEGEND

- Interstate Route No.
- U.S. Route No.
- State Road No. (Primary System)
- N.C. Division of Forest Resources
- N.C. Division of Parks and Recreation
- N.C. Wildlife Resources Commission
- U.S. Army Corps of Engineers
- Waterfowl Impoundment
- Cary Water Intake Structure
- Hiking Trail
- Marina
- Wildlife Observation Platform
- Buoy Locations
- Fish Habitat Structures

