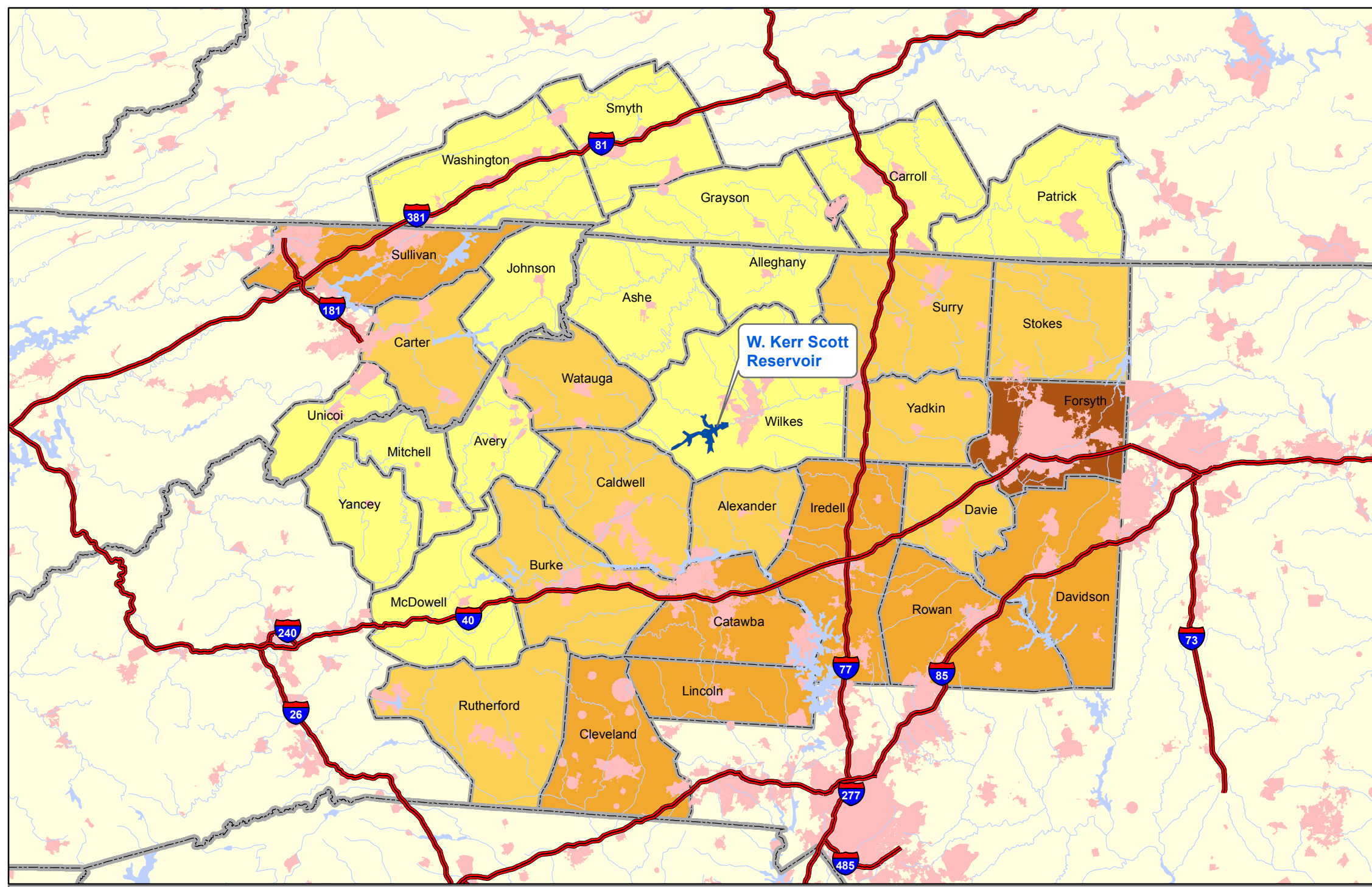


W. Kerr Scott Reservoir

Figure 12
Population Density



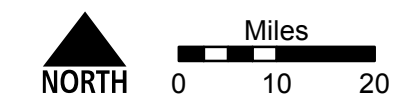
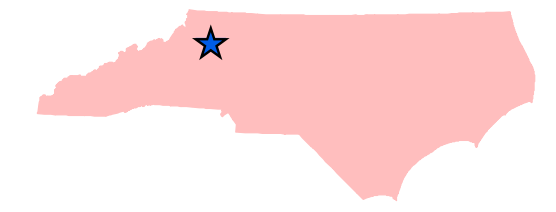
Legend

- Interstate
- State Boundary
- Streams and Rivers
- Waterbodies
- Municipal Boundary

Counties within 50 Miles

Population per square mile

- 20.0 - 100.0
- 100.1 - 213.3
- 213.4 - 437.4
- 437.5 - 827.1
- 827.2 - 2171.5

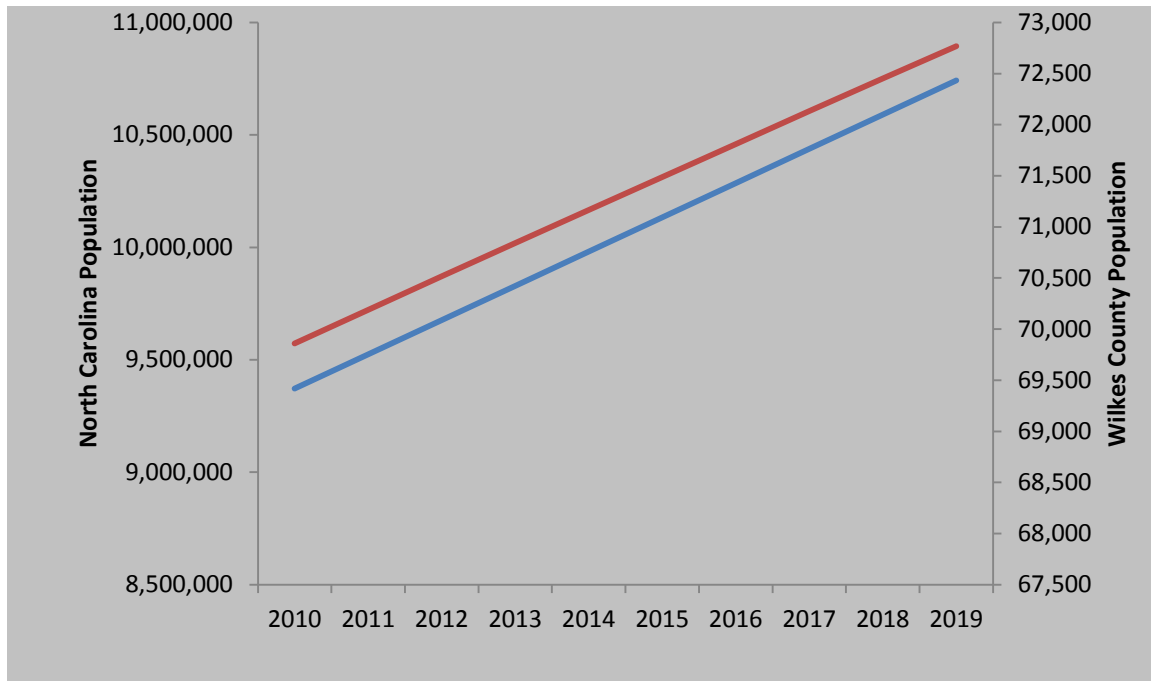


W. Kerr Scott Reservoir is located in Wilkes County, North Carolina which ranks as the state's 60th most densely populated county (out of 100). The rural character of the communities that surround the reservoir is part of what gives the project its character. The greatest number of day users come from these surrounding counties.

Sources:

ESRI 2000 and 2002

Figure 13: Annual Population Growth Projections through 2020 for Wilkes County and North Carolina



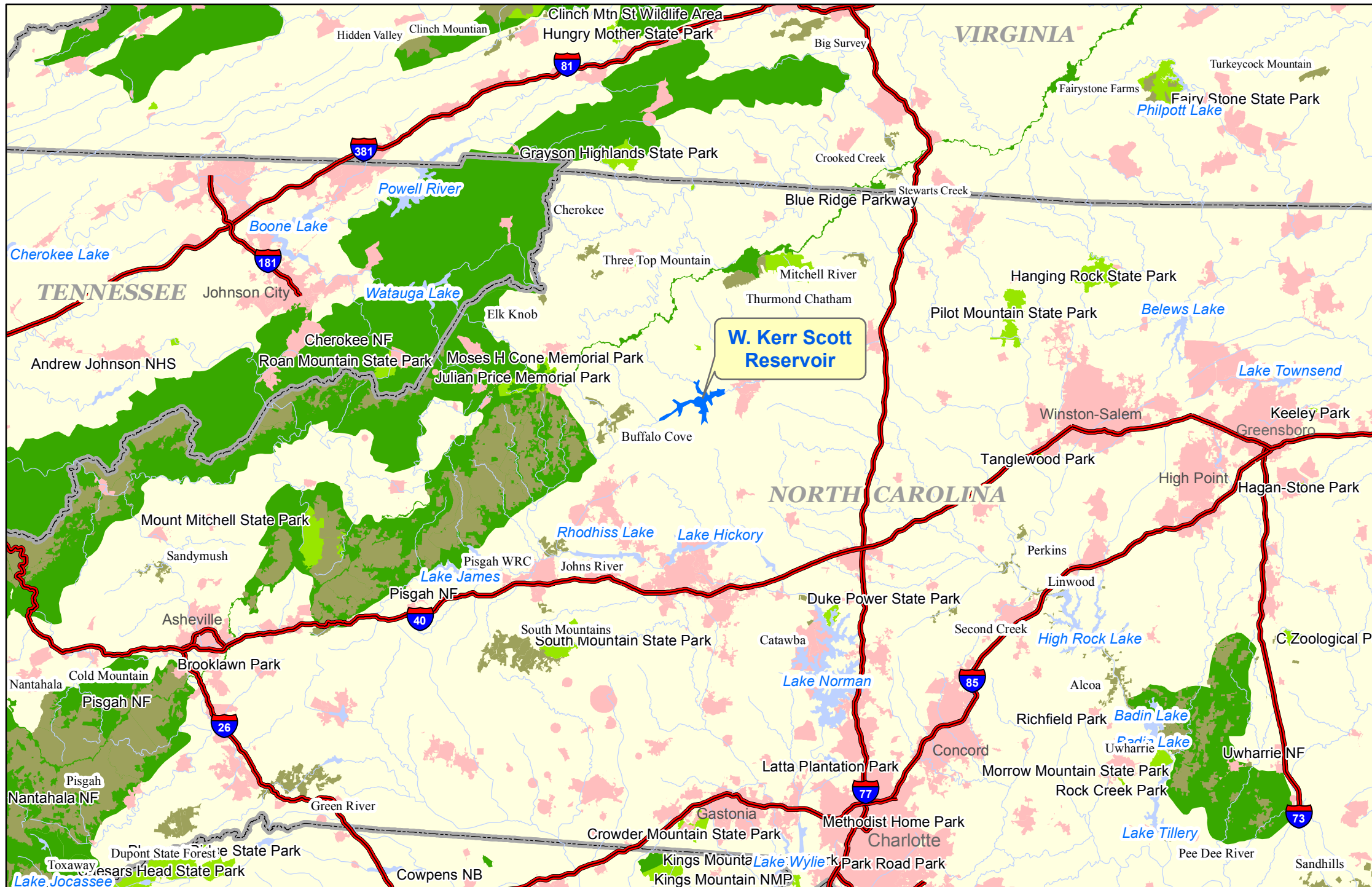
— = North Carolina Population
— = Wilkes County Population
Source: North Carolina Office of Budget and Management 2011

2.20.2 Area Industries

Wilkes County extends from the western extent of the Piedmont region to the eastern edge of the Blue Ridge Mountains. The county is bisected by the main road corridors for travelers heading to the northwest portion of the state, which includes the mountains and surrounding areas such as Boone. Proximity to natural resources and good transportation corridors assist the manufacturing trade in the county, the largest industry in the county as measured by the number of persons employed. Retail trade is the second largest industry in the county providing a significant amount of goods and services to the large number of visitors passing through the county via the Highway 421 corridor. Table 5 lists the major industries and employment number for Wilkes County.

2.20.3 Economic Impact of Recreation Related Spending

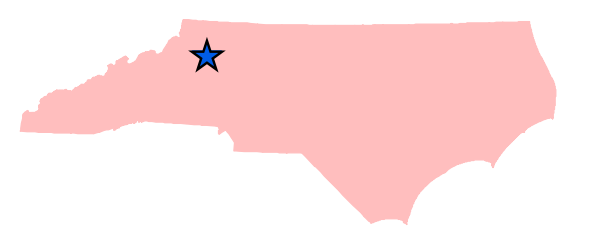
USACE provides water-based recreation opportunities throughout the country, which provides economic benefits to the local and regional communities in which USACE projects exist. To estimate the economic impact from the recreation related spending at these projects USACE, in collaboration with researchers at Michigan State University, developed the “Recreation Economic Assessment System (REAS)”. The REAS is an economic input-output model that was developed for all USACE projects based on recreation visits in 2006 and a set of economic ratios and multipliers for a region. Without recent survey data to justify making any specific adjustments to the user inputs, the REAS estimates that recreation



W. Kerr Scott Reservoir

Figure 14
Regional Recreation

-  Interstate
-  Streams and Rivers
-  Waterbodies selection
-  State Boundary
-  Waterbodies
-  Municipal Boundary
-  Game Lands
-  Federal Lands
-  State Parks



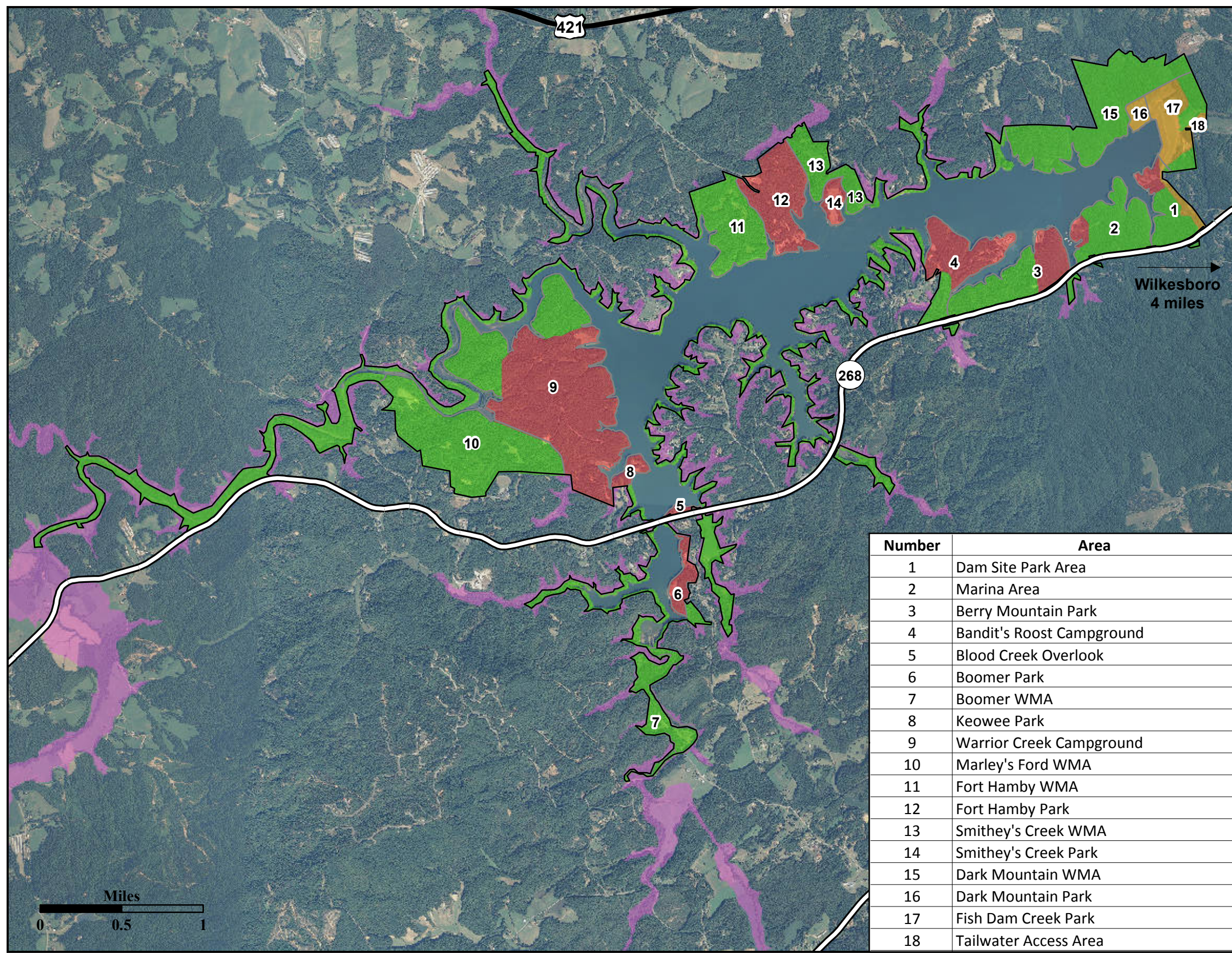
Many of the natural and historical areas in the W. Kerr Scott Reservoir region have been conserved and made available for public use through state parks, game lands, historic monuments, or other public recreation areas. W. Kerr Scott Reservoir is one such area that provides a wealth of both land- and water-based recreation opportunities. Although it is located some distance from any major population center, it is situated among other recreational destinations for travelers. Providing compatible and unique opportunities is a component of the mission the USACE and its partners carry out at W. Kerr Scott Reservoir.


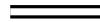





Sources:
DGIF 2008; ESRI 2000 and 2002; NC OneMap 2009



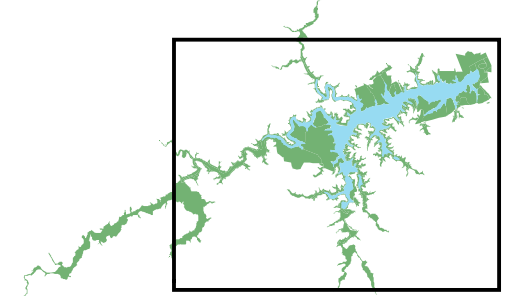
W. Kerr Scott Reservoir


Figure 15
Existing Land Classification



-  US Route
-  NC Route
-  Project Boundary
-  Project Operations
-  Recreation
-  Multiple Resource Management
-  Easement Lands

Number	Area
1	Dam Site Park Area
2	Marina Area
3	Berry Mountain Park
4	Bandit's Roost Campground
5	Blood Creek Overlook
6	Boomer Park
7	Boomer WMA
8	Keowee Park
9	Warrior Creek Campground
10	Marley's Ford WMA
11	Fort Hamby WMA
12	Fort Hamby Park
13	Smithey's Creek WMA
14	Smithey's Creek Park
15	Dark Mountain WMA
16	Dark Mountain Park
17	Fish Dam Creek Park
18	Tailwater Access Area

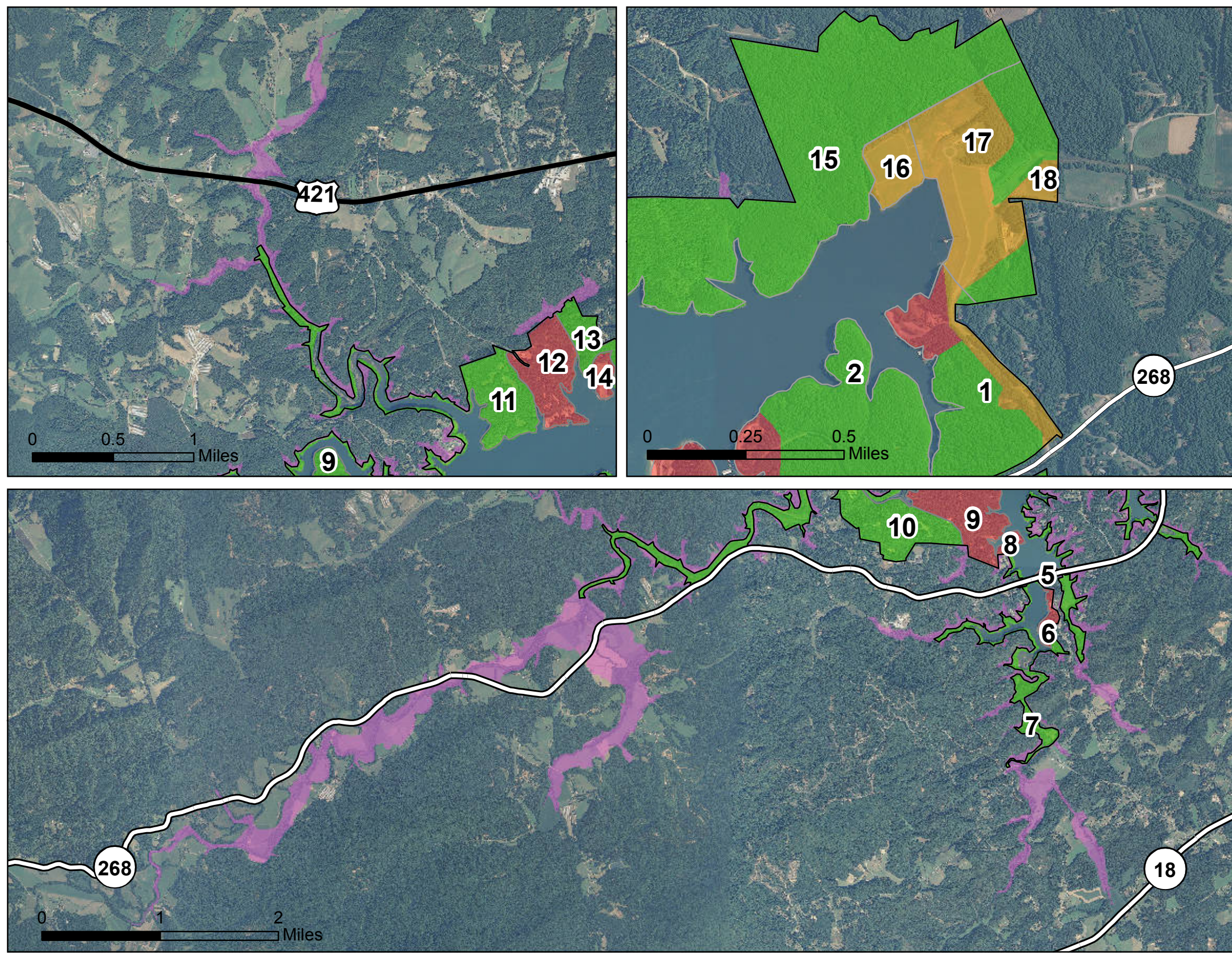


 Map for planning purposes only


Sources: NC One Map 2006; TIGER 2000; USDOT 2006; USACE 2010; NRCS 2009

W. Kerr Scott Reservoir

Figure 16
Existing Land Classification Insets



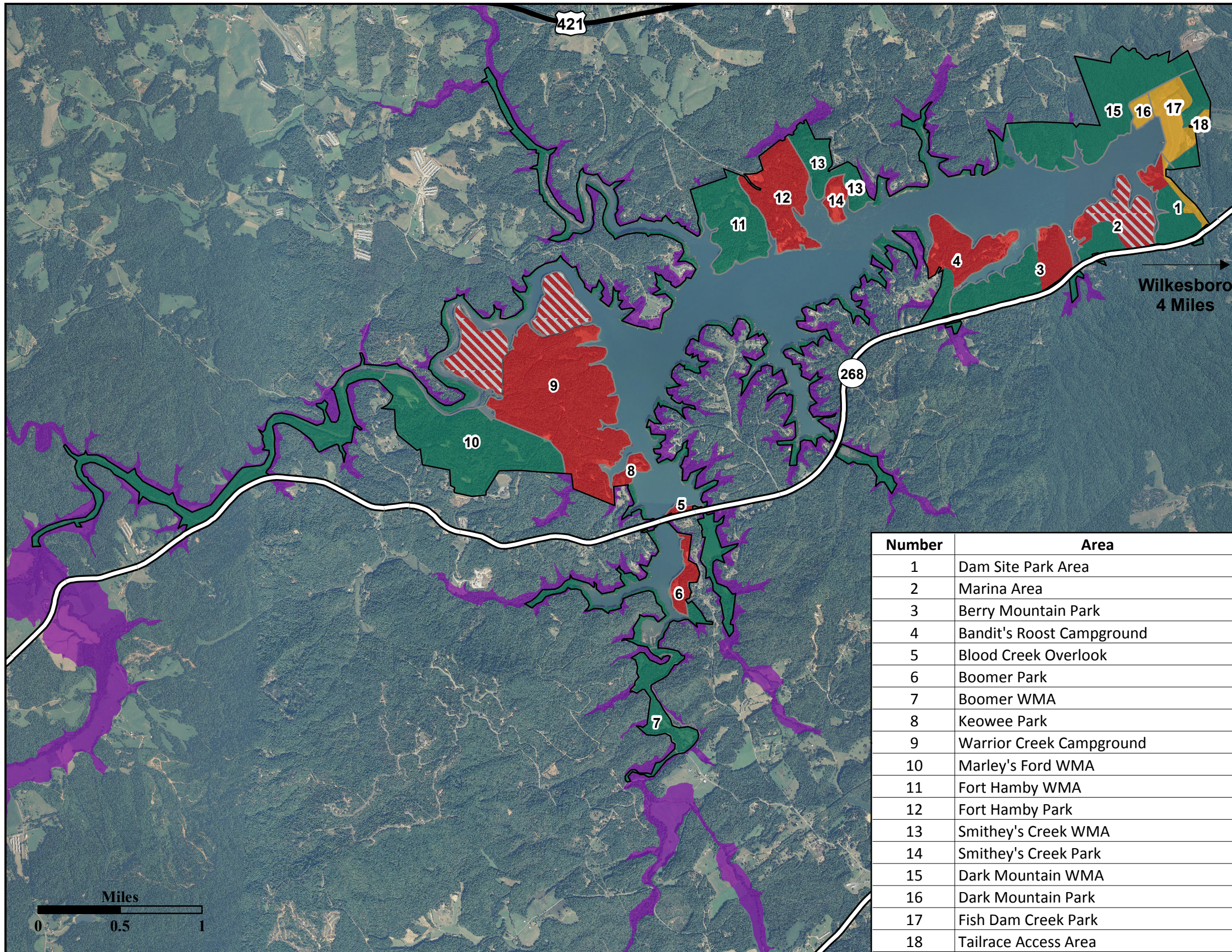
- US Route
- == NC Route
- Project Boundary
- Project Operations
- Recreation
- Multiple Resource Management
- Easement Lands

 Map for planning purposes only

Sources: NC One Map 2006; TIGER 2000; USDOT 2006; USACE 2010; NRCS 2009

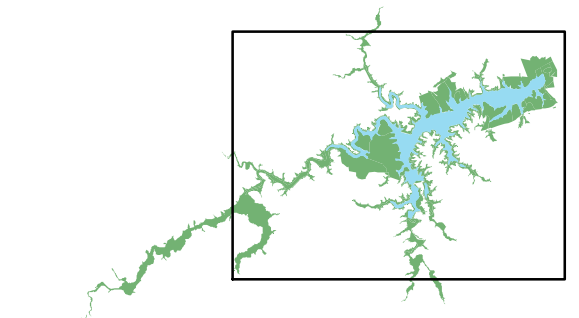
W. Kerr Scott Reservoir

Figure 17
Recommended Future Use



- US Route
- NC Route
- Project Boundary
- Operations
- Recreation
- Recreation (Currently Undeveloped)
- Wildlife and Low Density Recreation
- Flowage Easements

Number	Area
1	Dam Site Park Area
2	Marina Area
3	Berry Mountain Park
4	Bandit's Roost Campground
5	Blood Creek Overlook
6	Boomer Park
7	Boomer WMA
8	Keowee Park
9	Warrior Creek Campground
10	Marley's Ford WMA
11	Fort Hamby WMA
12	Fort Hamby Park
13	Smithey's Creek WMA
14	Smithey's Creek Park
15	Dark Mountain WMA
16	Dark Mountain Park
17	Fish Dam Creek Park
18	Tailrace Access Area

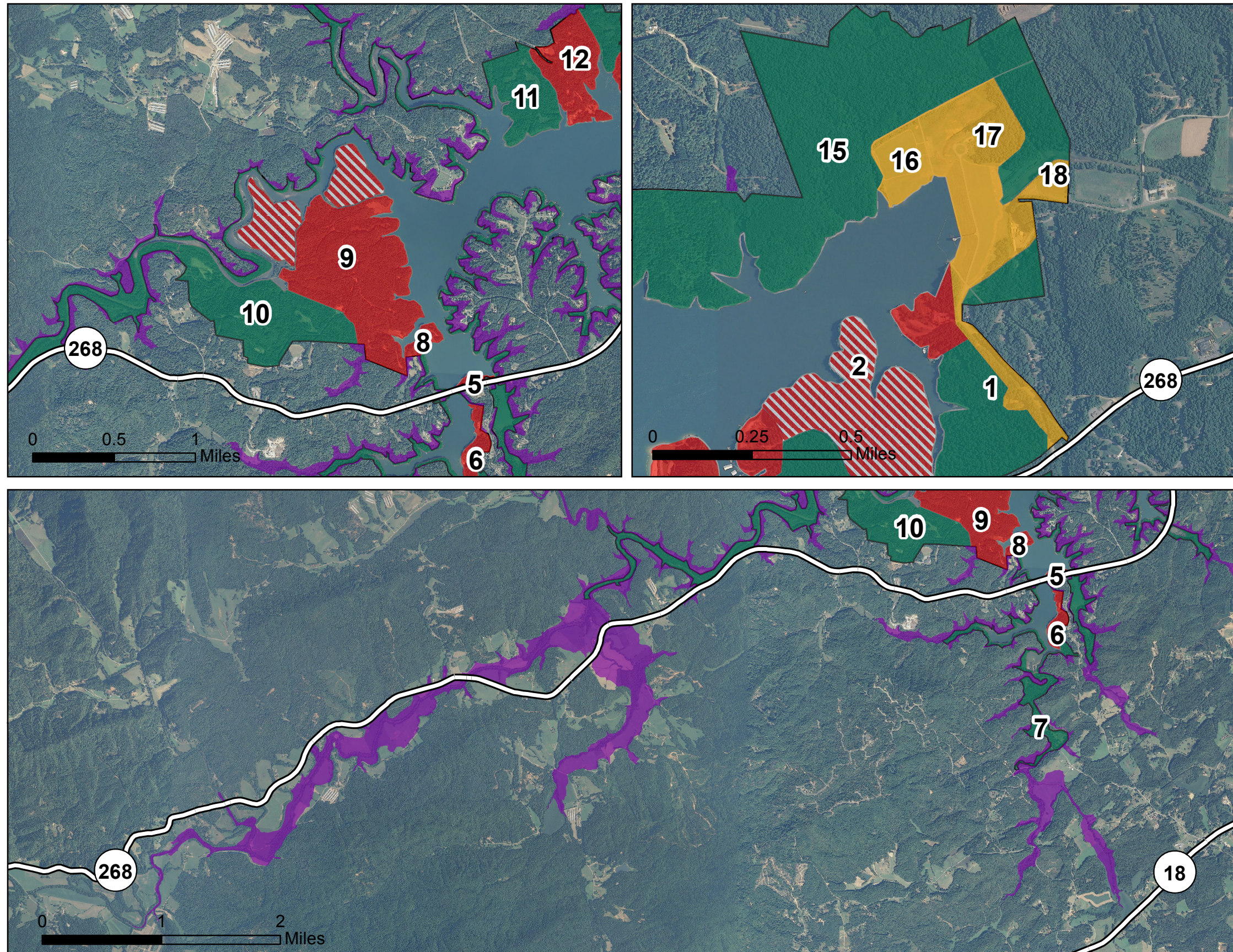


Map for planning purposes only

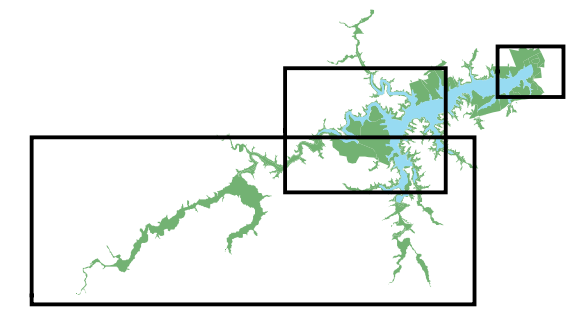
Sources: USDOT 2006; USACE 2010; NRCS 2009


W. Kerr Scott Reservoir

Figure 18
Recommended Future Use Insets



- US Route
- == NC Route
- Project Boundary
- Operations
- Recreation
- Recreation (Currently Undeveloped)
- Wildlife and Low Density Recreation
- Flowage Easements



 Map for planning purposes only

Sources: USDOT 2006; USACE 2010; NRCS 2009