

Master Plan Supplement

Public Information Session

Snows Cut

New Hanover County, NC

US Army Corps of Engineers
Wilmington District

September 29, 2014



®

US Army Corps of Engineers
BUILDING STRONG®



© 2013 Google

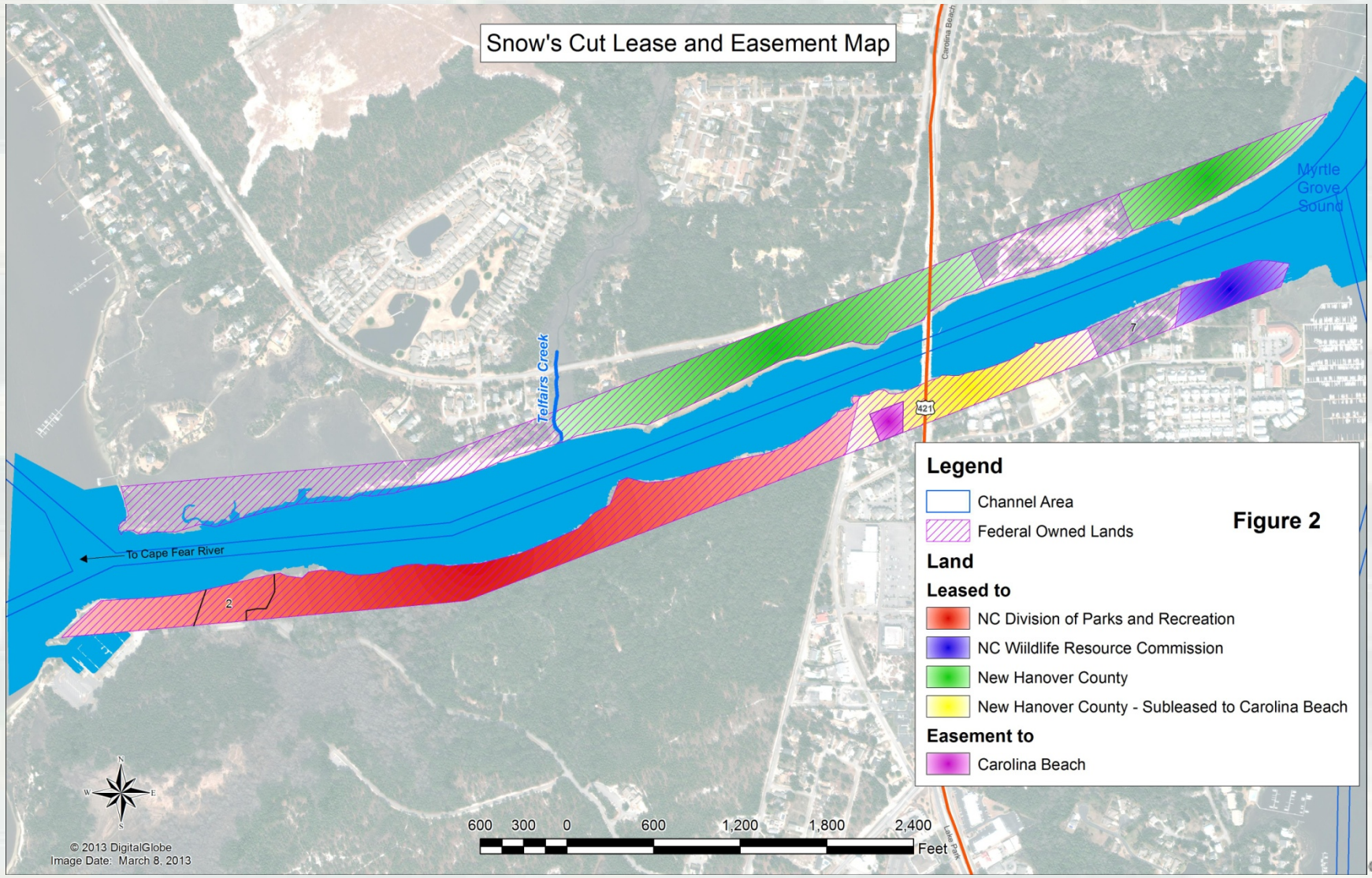
© 2010 Google

Snows Cut (AIWW)

- Snows Cut is a part of the AIWW between the Cape Fear River and Myrtle Grove Sound, approximately 9,000 feet in length.
- Snows Cut was authorized by Congress in 1927, construction of channel and bridge completed in 1931.
- The channel centers on a 1,000-foot, fee-owned right-of-way along its entire length. Although the authorized navigation channel is only 90 feet in width, erosion of the adjacent shoreline has increased the waterway to a width in excess of 400 feet.
- The project's lands were originally obtained for Project Operations – for constructing and operating the project.
- Strips of land lie within the right-of-way along each side of the project. These strips average 300 feet in width and range up to 25 feet above the average high tide elevation.



Snows Cut Leases



Legend

- Channel Area
- Federal Owned Lands

Land

Leased to

- NC Division of Parks and Recreation
- NC Wildlife Resource Commission
- New Hanover County
- New Hanover County - Subleased to Carolina Beach

Easement to

- Carolina Beach

Figure 2

Master Plans (MP) and MP Supplements

MP provides a programmatic approach to the management of all of the government-owned lands included within the Snows Cut project boundaries. The MP project area includes all of the area within the Snows Cut fee-owned lands.

The master plan provides guidance on the overall management of project area lands and incorporates specific resource objectives.

Master Plans should be updated regularly to incorporate recent documentation on resources in and surrounding the project area and to provide Army Corps managers with renewed missions, goals, and objectives regarding project lands.

Previous MP was completed for Snows Cut in 1994.



Master Plans

INCLUDE:

- Natural, Physical, and Cultural Resource Information
- Land Classifications and Recommended Future Uses
- Resource Objectives, Development Needs, Management
- Recommendations on Implementing the Master Plan's Policies
- National Environmental Policy Act Compliance (Programmatic)

DO NOT INCLUDE:

- Modifications to Leases
- Changes to Resource Management Plans (Forestry, Fisheries, etc.).
- Specific Plans for New Actions, Designs, or Renovations



The Master Planning Process



Land Classification Definitions

Project Operations

Those lands required for the operations center, office, maintenance compound and other areas that are used solely for project operations.

Recreation

Land developed for intensive recreational activities by the visiting public, including developed recreation areas and areas for concession, resort, and quasi-public development.

Multiple Resource Management

- **Recreation – Low Density:** Activities such as hiking, primitive camping, wildlife observation, and hunting.
- **Wildlife Management General:** Fish and wildlife management activities.
- **Vegetative Management:** Management activities for the protection and development of forest and vegetative cover.
- **Inactive and/or Future Recreation Areas:** Recreation areas planned for the future or that have been temporarily closed.

Environmentally Sensitive Areas

The classification involves areas where scientific, ecological, cultural and/or aesthetic features have been identified as especially sensitive to adverse environmental impacts. At Snows Cut, these areas are intertidal marsh

Definitions from USACE Engineer Pamphlet 1130-2-550: Recreation Operations and Maintenance Guidance and Procedures



Land Use Classifications at Snows Cut

- **Project Operations**

- This category includes those lands required for the levees, dikes, maintenance facilities, and other areas that are used solely for the operation of the project.
- Snows Cut examples are existing disposal sites and the vessel docking and storage area (site 7).

- **Recreation**

- These lands are designated for intensive levels of recreational use such as public recreation facilities, concession development, and high density or high impact recreational use.
- Snows Cut examples include the picnic area at Carolina Beach State Park, Snow Cut Park operated by New Hanover County, and NC Wildlife Boat Ramp.



Land Use Classifications at Snows Cut

(continued)

- **Multiple Resource Management**

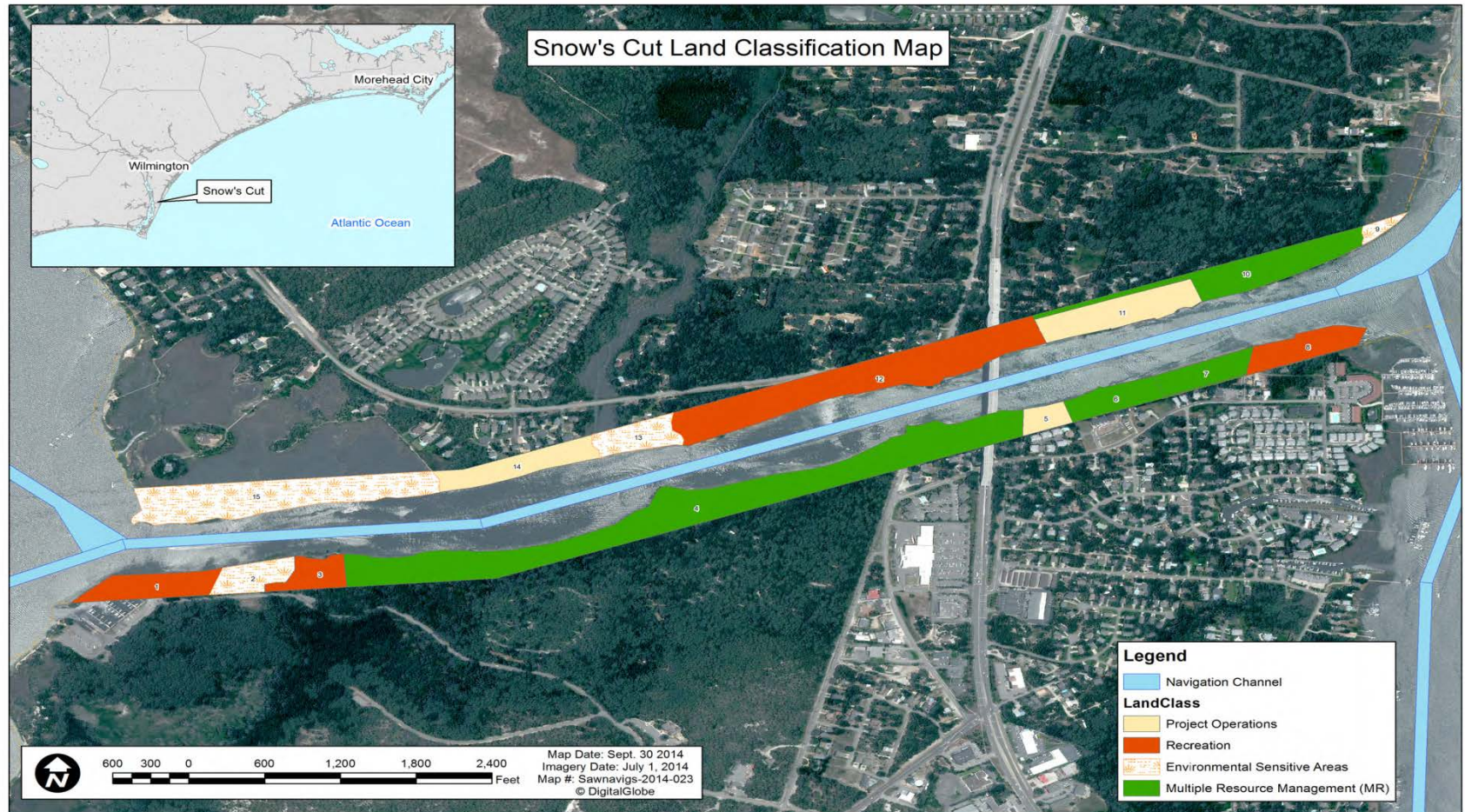
- This classification allows for the designation of a predominate use with the understanding that other compatible uses may also occur on these lands (e.g. a trail through an area designated as Wildlife Management). Example uses include low density recreation, wildlife management, and future or inactive recreation areas.
- An example at Snows Cut includes most of the leased area at Carolina Beach State Park.

- **Environmental Sensitive Areas**

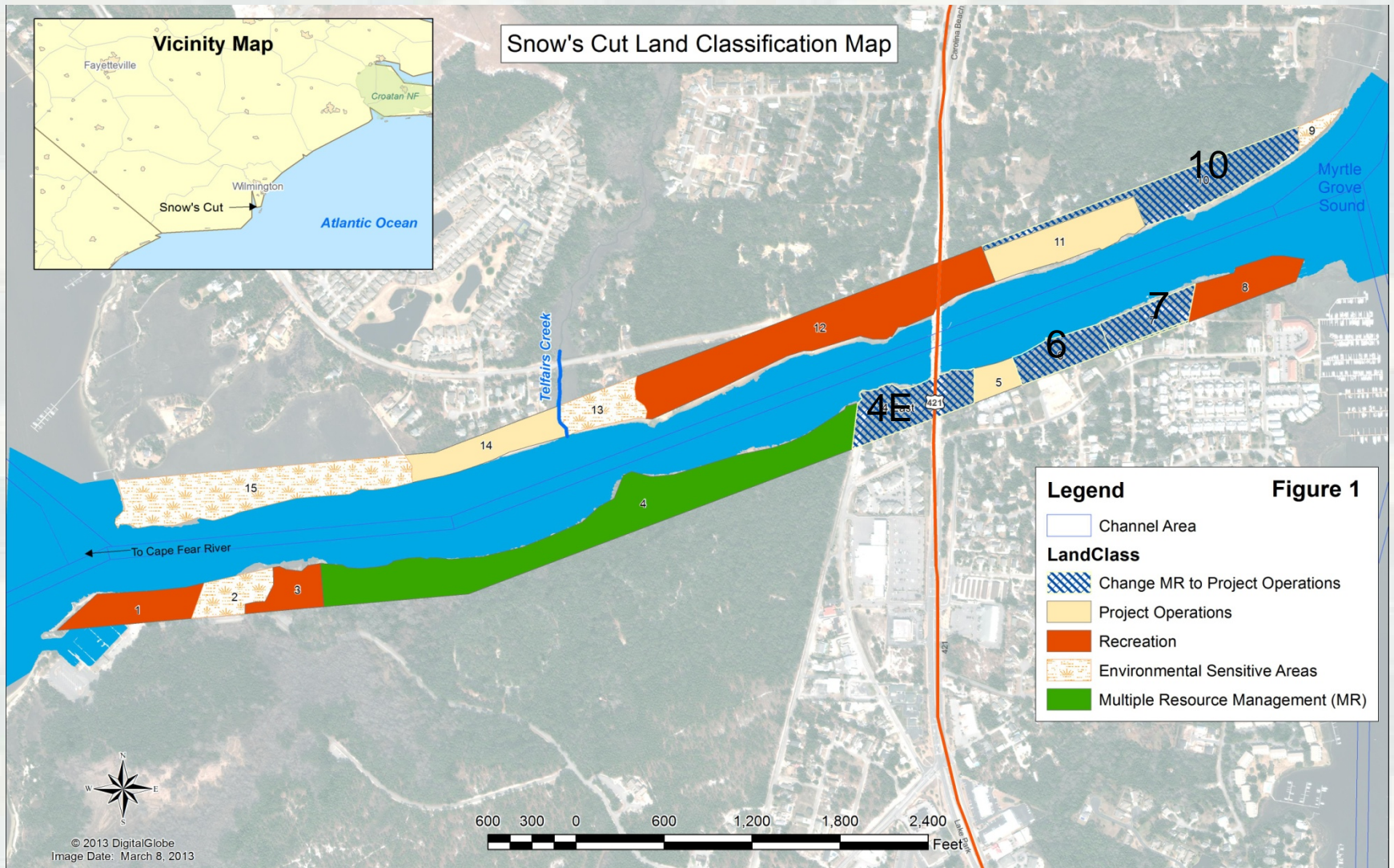
- The classification involves areas where scientific, ecological, cultural and/or aesthetic features have been identified as especially sensitive to adverse environmental impacts.
- At Snows Cut, these areas are intertidal marsh.



Current Land Use Classifications at Snows Cut



Proposed Land Use Classifications at Snows Cut



Snows Cut MPS

Rationale for Recommendations

- Change the classification of sites 4 E, 6, 7 and 10 from Multiple Resource Management to Project Operations.
 - Site 7 - Current use by the Corps for storage and docking vessels
 - Site 6 – Adjacent to 6 and provides a continuous location for potential Project Operations
 - Site 4E – Making of 4E project Operations would potentially improve access to operations areas by Old Dow Rd (Bridge Barrier Road).
 - Site 10 – Provides potential operations area adjacent to existing operations area on north side of Snows Cut
- Reclassify sites 2 and 9 to the environmental sensitive classification.
 - Sites 2 and 9 are not suitable for recreation. Misclassified in the 1994 MP.



Master Plan Supplement Recommendations:

- Change the classification of sites 4 E, 6, 7 and 10 from Multiple Resource Management to Project Operations. Change is due to current use by the Corps for storage and docking vessels at site 7 and potential Project Operations use of the other sites.
- Reclassify sites 2 and 9 to the environmental sensitive classification. These sites were misclassified as Recreation in the 1994 MP.
- Conduct annual archaeological surveys Survey Snows Cut shoreline and eroding banks.
- To preclude potential contamination of Carolina Beach water supply well #10, no structures, vehicles, or potential hazardous materials (e.g. fuel storage tank) will be located within 100 feet of the well.

